

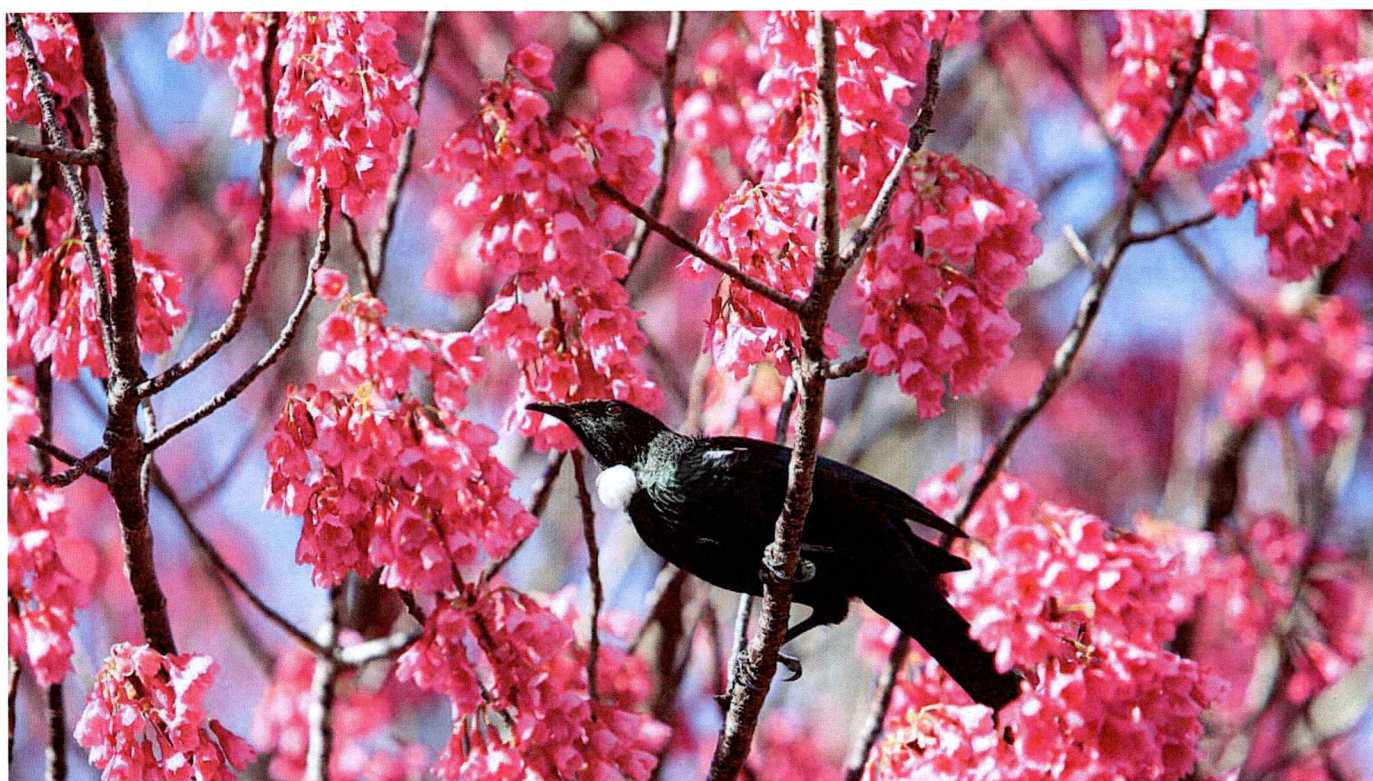
Eureka Express

Vol XLVI No. 7 Circ 295

www.eurekaexpress.co.nz

AUGUST 2025

editor@eurekaexpress.co.nz



Spring is here!

FRONT COVER SPONSORED BY

WAIKATO SHED
COMPANY ✓✓
great sheds, done right!



Business Directory - Kindly Sponsored by Waikato Sheds

Eureka Express Committee, thank all who sponsor pages and who advertise with us. We appreciate your continued support, without which, we couldn't continue to produce the express for our locals.

Agricultural Contractors

Computerised Bulk Spreader
Dig it Earth Work
G & M Fencing
JCL Jackson Contracting
Wallings Contracting

Builders:

Billings Builders Ltd

Electrician:

J P Electrics - James Palmer

Hair Design:

Hair Fields - Sharon Laurent

Garage & Workshop:

Gull Eureka - Colin

Jewellery:

Local Boutique Jeweller

Justice of the Peace:

Kevin Deane JP

Land Agents:

Harcourts - Kevin Deane

Lawns & Gardens:

Lawn Mowing & Gardens - Alex & Sharyn MacDonald

Easy Stake - Plant Support - Simon

Pre School & Schools

Motomoho School

Pukeko Pre school Tauwhare

Tauwhare School

Newstead Country School

Pumps

Ross Pumps - Daren Ross

Text & Email

CTAS reminders by Text & Email

Veterinary Services

Newstead Veterinary Services

Waikato Shed Company

Sheds, Stables, Garages, Lifestyles, Rural, Industrial, Sleepouts, & much more

*Please refer to the individual
advertisements for further
Information*

Bernard & I arrived in the area with our 3 boys in November 2009, we didn't intend to "move to the countryside" (we only came from Hillcrest) we had just been looking for a house that was big enough to accommodate our eldest son in his wheelchair and still be in the area for Hillcrest High/Berkley Intermediate School for the other two boys. It seemed so far out in the country but we soon didn't notice the distance at all.

People ask us if we have animals and we tell them an acre is too small but we grow trees. When we first moved here all the trees around us were small, we would sit in the lounge watching the traffic going past on SH26 and now the plane tree in our front yard (which was as tall as us) is huge, we've planted native trees all out the front, totaras, kauri, nikau palms, kowhai, kahikatea and those are slowly getting big too. In recent years we've started to notice visits from the odd tui, something we never saw in the past.

I look back and wonder where the time has gone, the boys have grown up and left home, Alex is now a primary school teacher at Hamilton East School & Morgan is at Unitec doing NZCE Engineering after he decided building wasn't for him. Bernard & I are now running our own business Asbestos Survey Reports Ltd doing asbestos reports & clearances and enjoy the freedom this has given us instead of being stuck working in one place we get to see all sorts of areas we'd never normally go to.

We now love living in the country, not having your neighbours squashed up next to you, only the cows are nosey and looking at you through the fence – no judgement from them.

I'd recommend the country lifestyle to people but remember you do live amongst working farms dust and smells are part of it and if that doesn't bother you then you'll be happy too!

Louise & Bernard Edwards

Whats happened, happening or about to happen

Eureka Express costs for advertising,

Classified adverts free (but a donation would be appreciated)			
Small Business	x 10 insertions	\$10 per month or	\$100 per year
Third of a page	x 10 insertions	\$15 per month or	\$150 per year
Half page	x 10 insertions	\$20 per month or	\$200 per year
Whole page one off is at the discretion of the committee			
Sponsorship \$5 per month or \$50 per year			

Please note: all advertisements are at the discretion of the committee and space available. While we do try to accommodate everyones needs with advertisements, we also need to keep the express up to date with articles of interest.

Donations can be made via our bank account Eureka Express 03-1559-0042600-00 or Eureka Garage

HALL UPDATE

The major event for the hall in August was the AGM. I am now officially the Chairperson of the Hall Committee, Heather Monehan the Secretary and Shaun Bartlett continues as the treasurer. Kathryn Schicker is handling the hall bookings and all that goes into ensuring the hall is ready for hire. I can be contacted on 0221238220.

Security considerations are still top on the agenda after the breakin. The firm Cushman and Wakefield are kindly donating a new heat pump to replace the one damaged when the burglars tried to remove it. The committee is looking at a range of other security measures.

Gayle Orr formally resigned from the hall committee at the AGM. Gayle and her husband Lionel have devoted years of service to the hall committee and in recent years have organised Anzac Day services at our Eureka cenotaph. A big thanks from the committee and residents goes to you Gayle and Lionel.

A garage sale was also held which generated a small profit for the halls general funds. After the big expense of the interior painting of the hall last year, every little bit helps.

For hall hire please email eurekahallwaikato@gmail.com.

Regards Susan

Eureka Express Results and Going forward- Help Needed

Hi Everyone,

Thank you all for the kind comments and suggestions, from our revamp questionnaire. We are working through them, but need help with eyes and ears on the ground to gather information, research and writing articles. If you have anything you would like included, marriages, babies, welcomes to the district, anniversary's etc, just email us at editor@eurekaexpress.co.nz

At a very busy committee meeting this week, we decided to accept a motion, to accept the offer of a new contract from Ricco Photocopiers to lessen our monthly costs. **However, in order to keep the express viable, going forward for the next three years, we need donations or sponsorship and people help. Sponsorship of any page you nominate at \$5 per month or \$50 per year.**

Your sponsorship and name will be displayed on your nominated page, as we do with Waikato Sheds. Or a donation of any amount will be gratefully accepted. These can be left at Eureka Service Station or our bank account listed below

All of us are not getting any younger, and not always able to see or hear what's going on in our community. If you are at all able to help with this, we would be grateful. You do not necessarily need to join the committee but any help gratefully accepted.

Another few years will see us at 50 years, which is a long time for a small community So please, please give it some thought how you could help us.

Moves are being made to make use of technologies, updating our website and putting some items of interest on the Eureka Community Face book page.

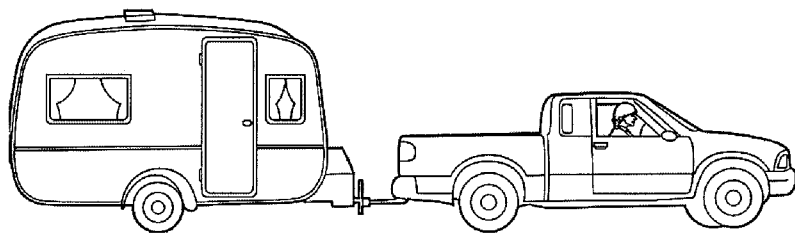
HELP is ALSO needed with snippets - who has moved away, who has moved in, bereavements, births, milestones and events coming up. Would you like to contribute to the express in any way, like writing articles, information on important events, if so we need your help. Please let us know: editor@eurekaexpress.co.nz

We look forward to hearing from our would be writers.

The Eureka Express committee appreciate and thank you, for your assistance

Farewell to Gayle & Lionel Orr

Over the past few months, we have lost our long-time dedicated Eureka residents Lionel and Gayle Orr, who have decided for various reasons to move to Morrinsville. They are very happy in their new home, although like everyone down- sizing, it's hard to let go of treasured items and tools for that I might need moment. Although Gayle is staying on in her position of Chairperson/Secretary/General Dogs-body, the express committee wish them all the very best in their new home and safe travels in their caravan.



FOR SALE

2008 HONDA CIVIC S 2.0L PETROL AUTO PADDLE SHIFT CRUISE CONTROL

NZ NEW 2 OWNERS 226K kms

Registration expires: 23 December 2026

WOF expires 18 July 2026

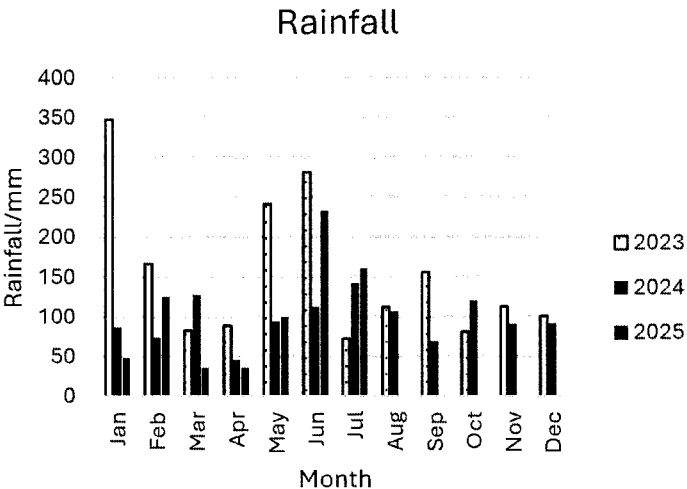
Features include: Alloy wheels, leather seats, sunroof, airbags, electric windows, fog lights, good tyres. New brakes on all 4 wheels, new timing belt.

Arm rest driver seat leather is worn

Asking price: \$6000.00 ono (includes on road costs)

Phone: 0274732014

Eureka Weather	2025	2024
Rainfall total	160.5 mm	141.5mm
Rain Total for year	736.5mm	677.5mm
Rainy days	13	12
Most daily rainfall	40mm	40 mm
Highest wind speed	43.6 km/hr	41.8km/hr
Temp high	19.7 °C	15.7 °C
Temp low	-2.2 °C	-2.6 °C



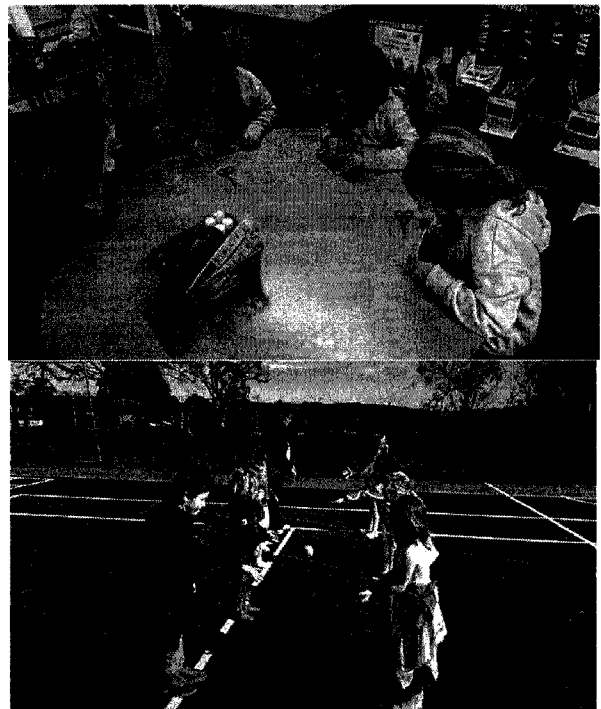
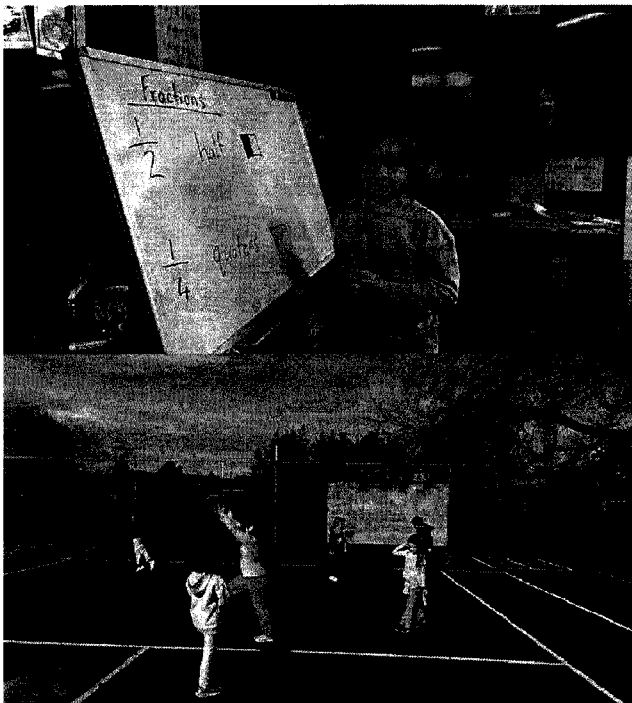


August, Term 3, 2025

This term we have been looking forward to a trip to Te Whare Taonga o Waikato and on Tuesday the day arrived at last. It was fabulous to see how well-behaved your children were and to see the stories of the Waikato through their eyes.

Room Tūi identified a different area of learning, such as Princess Mary organising gift tins for all the people fighting in WWI (Cooper), the Excite lights show that showed eels on our floor (Theo) and the carved Pou that shared the private stories of our ancestors (Sam).

Room Piwakawaka have had a busy term so far learning about all the living things in our environment, how to keep our worm farm healthy and how to keep ourselves healthy and clean during the day. We worked together to make a display in our classroom of all the living things we see at Motumaoho School and it was great to see the students share all their creativity.



We have been exploring fractions during maths time and moving into measurement this week.

We also look forward to learning all about the water cycle, where our water comes from and why we should take care of our waterways.

facebook.com/motumaoho.school

Website: www.motumaoho.school.nz



Gardening Tips

Potato growing Guide

The humble potato is a staple on many dinner tables around New Zealand. Roasted, boiled, mashed or in a salad – no matter how you serve yours, they will always taste better dug out of your own garden. Select a variety of seed potatoes that suits your tastes/how long you wait for your potatoes to be ready.

Early Varieties: 90-100 days

- **Rocket**- fastest producing of early varieties and provides a good yield-boiling potato with a waxy texture
- **Swift**- is fast growing with exceptional taste, will not discolour or disintegrate on steaming
- **Cliff Kidney**- performs best in peat soils-firm potato and best for boiling

Main Crop Varieties: 130-160

- **Heather**-reliable steady cropper-excellent cooking qualities, boiling, mashing and roasting
- **Nadine**- require adequate soil moisture at all times, white waxy potato, good for boiling
- **Rua**- good producer and produces heavily in most soil types excellent cooking qualities roasting and boiling and keeps well

For a bumper crop- high yielders

- **Ilam Hardy**-has light blight resistance, excellent cooking qualities frying and boiling
- **Agria**-high yielding excellent cooking qualities – in particular boiling stores well
- **Moonlight** –excellent drought and wind tolerance excellent cooking qualities frying and boiling.

Prepare: Select a variety of seed potatoes that suits your tastes/how long you want to wait for your potatoes. Buy your seed potatoes at least a month before planting, to enable them sprout. Remove them from the bag, place in trays in a dry, airy spot away from direct sunlight, until sprouts are approx 2-4 cm long. If you're starting with an existing bed dig in organic matter like sheep pellets and compost to your soil. Make long furrows approx 15cm deep in the soil approx 30cm apart for smaller varieties and 40cm apart for main crop and larger varieties. Place palings between the furrows to walk on while planting.

Plant: Sprinkle potato food in furrows and blend into soil. Place approx 25cm apart in furrows. Cover with up to 5cm of soil, water potatoes well. Continue mounding your potatoes as shoots grow until the mounds are approx 300mm high. This protects from wind and frost, prevents light reaching tubers and turning them green and encourages tuber development

Nourish: Feed your plants and they feed you. Potatoes are gross feeders, feed every three to four weeks during key growth periods. Well watered, well nourished potatoes will have a better chance of keeping insect pests and diseases at bay.

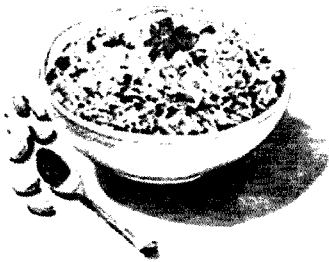


Ladies a Plate

Sweet Curry

700g braising steak or gravy beef
½ teaspoons ginger
1 ½ cups water
2 tablespoons brown sugar
½ teaspoon mustard
1 large onion

2 Tablespoons flour
½ teaspoon curry powder
salt and pepper to taste
2 tablespoons vinegar
½ cup tomato sauce



Dice meat, chop onion, mix all other ingredients together and pour over meat and onion. Bake at 180C in covered casserole dish for 2.5 hours. Apple, sultanas and other vegetables can be added. Serve with rice. Very good for crock pot but don't use quite so much water.

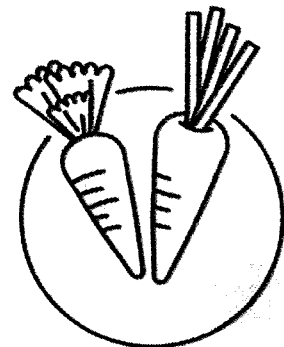
Savoury Carrot Rings

1 kg Carrots
1 capsicum diced
¼ to ½ cup oil
½ cup sugar

1 diced onion
450gm tin Tomato soup
½ cup Vinegar

Cut carrot into rings. Cook with no salt for about 15 minutes. Strain. Cut up onions and capsicum.

Bring to the boil soup, oil, vinegar and boil for 5mins. Pour over carrots. Serve either hot or cold. If preferred chopped mint can be used instead of capsicum. Very nice with meatballs.



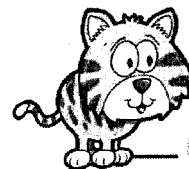
*These recipes are taken from Rhoda Read recipe book
the carrot recipe was given by Glenis Hinton a former local identity of Eureka.*



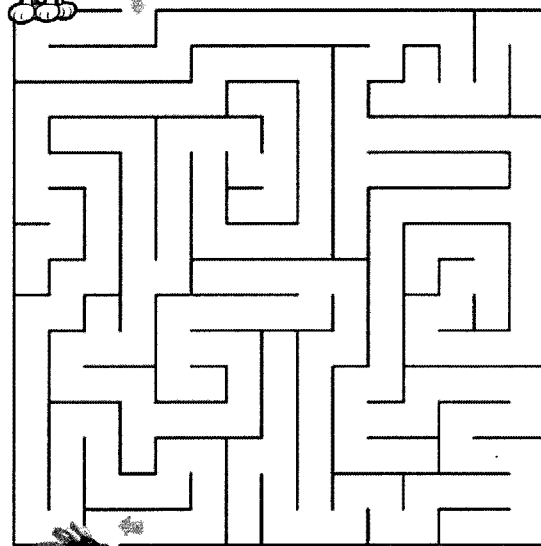
Cats and Kittens

I	R	R	E	T	A	W	H	S	W	U	T	N	K
E	N	D	B	M	C	T	S	C	A	W	B	L	W
T	S	C	T	T	E	S	H	R	D	I	I	S	H
H	C	O	L	L	A	R	E	A	O	M	H	M	I
R	R	T	A	I	L	W	L	T	P	U	R	R	S
E	E	N	E	A	B	P	T	C	T	K	T	U	K
T	P	B	A	I	L	I	E	H	T	I	R	R	E
U	A	N	H	R	A	H	R	I	C	T	E	S	R
N	W	C	E	C	N	C	R	S	P	T	A	T	S
A	S	M	K	I	K	O	B	W	W	E	T	R	E
S	M	E	O	W	E	R	E	A	S	N	S	E	T
T	D	I	S	H	T	C	D	L	T	P	L	T	P
E	H	P	A	R	H	I	C	C	R	R	R	C	M
U	A	C	E	T	I	M	R	T	S	C	N	H	T

CLAWS
PAWS
SHELTER
MICROCHIP
PURR
ADOPT
MEOW
SCRATCH
WHISKERS
COLLAR
TREATS
KITTEN
TUNA
TAIL
BLANKET
STRETCH
MILK
DISH
WATER
BED



Help me catch the Rat



SPOT THE DIFFERENCE

Can you spot the 8 differences between these two pictures?



Missing - cloud, left flower, right flower, cat whisker, left middle leaf, cat foot, line on rock, line in bottom leaf

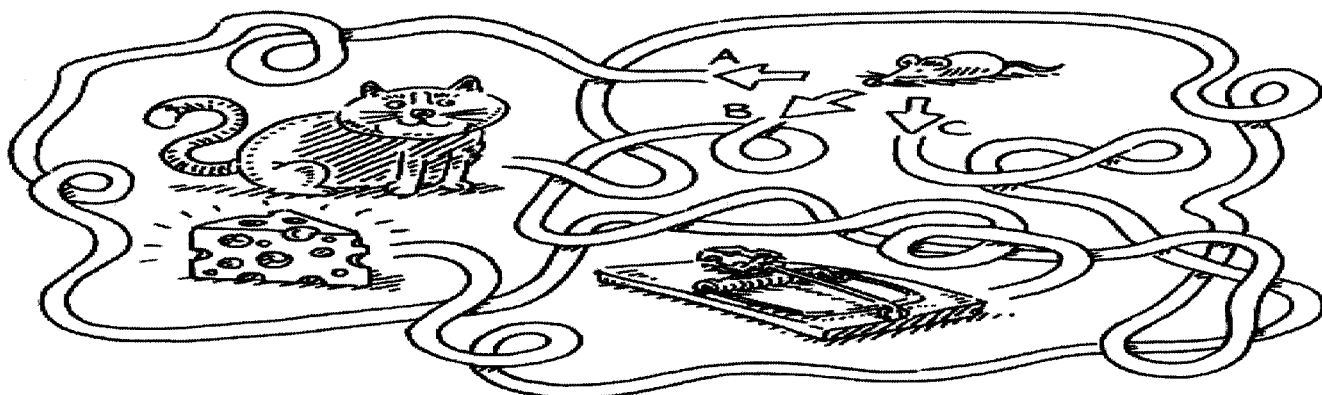
Cat

Word Scramble

Unscramble the letters to make words that have to do with Cats.

1. aCt _____
2. omT _____
3. ruPr _____
4. woMe _____
5. teP _____
6. anlCe _____
7. aStkl _____
8. eplSe _____

Cat, tom, purr, meow, pet, clean, stalk, sleep





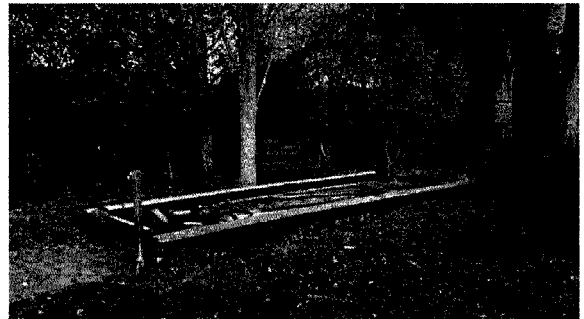
RESPECT - RESILIENCE - RESPONSIBILITY

TAUWHARE SCHOOL

Term 3 – SEPTEMBER 2025

WWW.TAUWHARE.SCHOOL.NZ

PIRATES of the CURRY BEAN



TOP NEWS

Tauwhare Production 2025

We are excited to announce this year's production will be Pirates of the Curry Bean. Auditions are set for the start of Term 3, with production date being Week 10 of Term 4. "Pirates of the Curry Bean" is a school musical, written by Craig Hawes, that tells the story of young twins, Jack and Liza Periwinkle, who discover a treasure map and embark on a swashbuckling adventure. The cast is nearly all set, and will be announced before the end of Term 3.

Cross Country Success

An epic day of racing saw our value of Resilience on display at our annual Cross Country. All runners gave their absolute best under a beautiful sunny day. Congratulations to Josh who took out first place in the senior open race, with Taize coming in second place and third. All the training certainly paid off, and the amazing PTA supplied the finish line ice blocks.

Sustainable Tauwhare School

Our school's environmental focus has been a massive success. Thanks to the hard work and enthusiasm of our students and teachers. The new school garden project is well underway, providing a fantastic hands-on learning experience. We're especially excited about the recent addition of a butterfly garden, which will attract a host of beautiful native butterflies. We're not stopping there! Another Enviro Day will be held before the term ends, where we'll continue our efforts to make our school a greener, more beautiful place.

Tauwhare is a well resourced, rural primary school for Year 0-6.
We have spaces for Out of Zone Enrolments at same year levels.
Applications reviewed by the Board of Trustees monthly.

VISITS WELCOME

Contact us on - admin@tauwhare.school.nz or 07 824 0864

Tamahere-Woodlands Councillors' update August 2025

Local Government elections 2025

Voting papers will be posted from 9-22 September to everyone registered on the electoral roll by 1 August. Anyone enrolling after 1 August must cast a special vote, available from the Council or Election Services (ph 0800 922 822).

Voting closes at 12 noon on election day (Saturday 11 October). The Council's electoral officer recommends you post your vote by 7 October, or hand deliver it to a Council office or library after that.

You are asked to vote for the Waikato District Mayor, two District Councillors representing the Tamahere-Woodlands Ward, and two Waikato Regional Councillors to represent the WRC's Waikato General constituency (covering the Waikato District). Information about the candidates are on each Council's website.

During the Local Elections 2025, you'll also be asked to vote in a binding poll on whether you support keeping or removing Maaori wards in the Waikato District. Waikato District Council resolved to incorporate Maaori Wards during the 2021 Representation Review and you can read more about Maaori Wards on the Council's election pages. The results of this poll will be activated for the local body elections in 2028.

Meet the Candidates

Meet the Candidate events are being organised by local community committees in the Tamahere-Woodlands Ward which covers Tamahere, Matangi, Tauwhare, Newstead, Eureka, part of Pukemoremore, Puketaha and Gordonton.

Events in this Ward advertised so far are:

- Tauwhare - Saturday 30 August, in the Tauwhare Hall, 1153 Tauwhare Rd, starting at 3pm.
- Tamahere – Wednesday 10 September, Tamahere Community Centre, 21 Devine Rd, starting at 4pm.
- Gordonton – Thursday 18 September, Gordonton Hall, 1024 Gordonton Rd, starting at 7pm.
- Tamahere – Saturday 20 September, Tamahere Community Centre, 21 Devine Rd, starting at 11am.

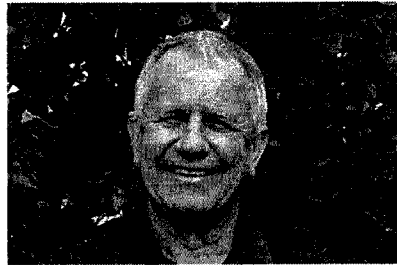
New Waters CCO – IAWAI Flowing Waters

Hamilton City and Waikato District Councils were the first in the country to have a joint plan for the future of their communities' water services formally approved by the Secretary for Local Government, Paul James, last month. All councils must submit Water Services Delivery Plans by early September to show how they will deliver water services, meet environmental and health regulations, make the right investments at the right time, and secure enough revenue and debt to do the work planned. Plans must keep up with growth and be financially sustainable. The HCC and WDC joint plan allows for the delivery of services through a newly-formed council-owned company, IAWAI – Flowing Waters. It will provide water services for around 280,000 people through 91,000 connections across the two council areas with a predicted 22% increase in households or businesses needing water services over the next 10 years and with investment in shared water services of \$3.6 billion over that period. The Water Services Delivery Plan can be viewed on both councils' websites. The new CCO will be fully operational from July 2026.

Department of Internal Affairs (DIA) Council Profiles

Profiles have been released for every council in the country. They are designed to help easy comparisons on rates, debt, spending, and staffing, but do not take account of differing growth rates and the difference in need to invest in new infrastructure, for example. Waikato DC is compared with a group of "Small Metro/Large Provincial" councils. The report is on the Council's website.

Contact your Tamahere-Woodlands Councillors:



Crystal Beavis, mob 0275 957 927, email crystal.beavis@waidc.govt.nz

Mike Keir, mob 027 449 3012, email mike.keir@waidc.govt.nz

What's up G?

By the end of the decade chorus will be shutting down the last of the copper lines around the country - which means if you're on ADSL/VDSL for internet now, you won't be in 5 years time. By and large either fibre or cellular-network-based internet provisions have taken over, with the majority of rural houses using either 4G receivers or Starlink. I won't go into my opinion of Elon Musk too much, save to say that he would be a great deal better off with oh, maybe 6-to-7 inches removed from the top of his head, but I have to admit his Starlink service is pretty good, and inasmuch as I don't like seeing the trails of satellites crossing the skies, it'll probably be his saving grace when he ends up in purgatory.

If you're not on ADSL/VDSL/Fibre/Starlink, you're dependent on the 4G network, which luckily isn't going anywhere anytime soon - unlike 3G and 2G. If you have a phone that only connects to 3G, you should be aware that all cellphone providers in New Zealand will have shut down their 3G networks by March next year, so, start looking for a new cellphone soon. Secondhand is fine, there's a glut in the market, but whatever you buy must support "4G LTE". I won't go into an explanation of that, I'm bored enough right now as it is. In addition One NZ (formerly known by the surprisingly *less* stupid name of Vodafone) will also shut down their 2G network.

Some older iPads and other tablets also use 3G/2G, if you've got a SIM in them to connect to the internet while you're on-the-go. Look up your model's number on the net to see it's specs. Likewise there may be some remote farming equipment such as security systems, soil meters and suchforth which rely on the 3G/2G networks. Best to check. And then there's 5G - its coverage in NZ is largely limited to city areas, due to the comparatively short range of transmission. What's the advantage? Mainly faster speeds and capacity for greater numbers of users. It uses more power than 4G but is reasonably safe as the beams can't penetrate things like human skin (4G can).

In related news, I would be remiss to not mention that once again Microsoft has pulled the old switcheroo, stating that they will give another free year of updates to existing Windows 10 users after October, so long as you have Onedrive installed, a Microsoft account, and you allow them to synchronize your system settings with them (Settings > Accounts > Windows backup > Remember my app & preferences). Or alternatively pay them \$50 (Settings > Update & Security > Windows Update > Enroll now). It's these sorts of constantly-changing tactics and double-speak which make everyone distrust them. First Windows 10 was going to be their final OS (using a yearly subscription model), then they brought out Windows 11. If you're unsure if you're on Windows 11 already, the default location of the button with the Windows logo on it is in the middle of the screen by default (though you can change that), as opposed to the left for all previous versions of Windows. Just a reminder that despite what MS tells you, almost any machine built after 2012 can come up to Windows 11 with the right help from a techie. If you're already on 11 and finding it unfamiliar, there's a bunch of things I can do to make it act more like 10.

Everything gets outdated, huh? Certainly seems that way. Where's my abacus?



Bentley Computer Support

International Week of Deaf People 2025

Theme for 2025: No Human Rights Without Sign Language Rights

22 to 28 September 2025



Aotearoa

Aotearoa



aroha

aroha



**canoe, waka
ama**

waka, waka ama



flax

harakeke



hāngi

hāngi



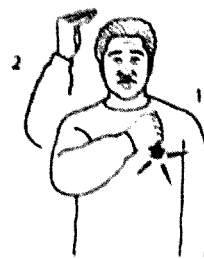
iwi

iwi



karakia

karakia



kaumātua

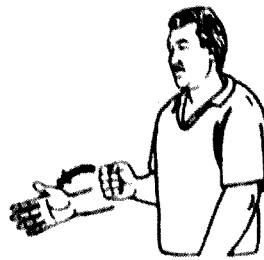
kaumātua



kaumātua



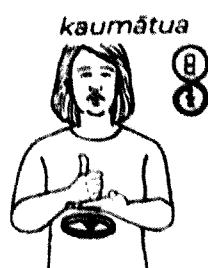
kaupapa



koha



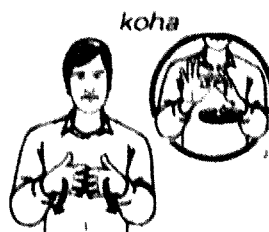
poi



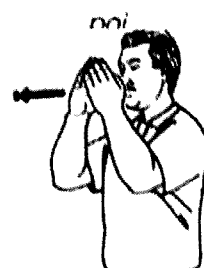
tēnā koutou



Te Reo Māori



**whakawhana
ungatanga**



wharenui



161 Morrinsville Road, Hamilton, 3286

Phone: 07 856 4522 Email enquiries@newsteadvets.co.nz

Website: www.newsteadvets.co.nz

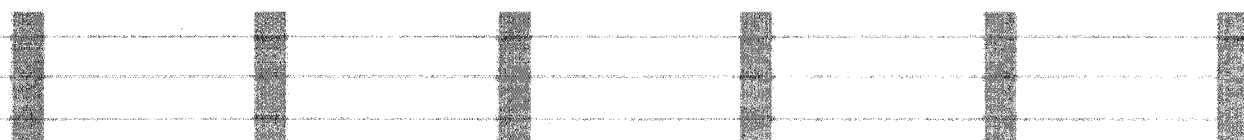
Newstead Vets offer a full range of veterinary services for small animals including:

- * Consultations (by appointment only)
- * Soft Tissue and Orthopaedic Surgery
- * Digital Radiography and Ultrasonography
- * NZVA Microchipping Accredited Practice
- * Nutrition and product Advice
- * Rural location with ample parking
- * Referral to Specialists
- * PennHIP Certified
- * Full Laboratory Service
- * Hospitalisation
- * Cremation Service
- * Convenient Online Shop

G&M FENCING

WAIKATO WIDE

For all your rural, lifestyle and residential fencing needs



Contact Mitch

0278418055

gandmfencingnz@gmail.com



Local Boutique Jeweller

DESIGN • MANUFACTURE • SHOWROOM

- Showroom by appointment only
- Private personal shopping experience
- Repairs and maintenance
- Custom design & manufacturing
- Remodelling old or unworn jewellery
- Unique, one-of-a-kind designs & small collection jewellery
- Independent insurance valuation services
- Wine and cheese shopping experience for small groups



GET IN TOUCH

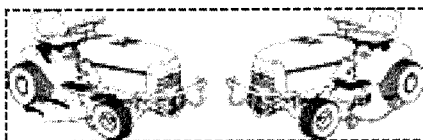
[@erikawatsonjewellery](https://www.instagram.com/erikawatsonjewellery)

[@ErikaWatsonJewellery](https://www.facebook.com/ErikaWatsonJewellery)

erikawatsonjewellery@gmail.com

LAWNMOWING & GARDENING SERVICES

Professional lawn and garden -care services



Alex & Sharyn Macdonald

For free no-obligation quote:

Phone 027 479 7282

or 027 308 6781

E:macdonaldmowing@gmail.com

Www.lawnandgardenservices.co.nz

Residential—Rural—Commercial
Spraying—Fertilizing—Weeding

HAIRFIELDS

HAIR DESIGN

95 HOOPER ROAD

Sharon Laurent

Full salon facility in Eureka

Total hair care professional

and many years experience

Agent for Nutrimetics

Open Tuesday to Thursday

Late nights Tues/Thurs

Tel. 027 280 5978



Servicing and installation

on all types of pumps

Full water treatment

service available

DAREN ROSS

Ph: 8241726

Or 0274 346 571

Email:

admin@rosspumps.co.nz

Easystake, Your garden plant support



Easystake: easy to use, easy to place, easy to move. galvanized steel construction for long life

Bloom Stand: displays your pots of colour, position for maximum impact, galvanized steel and available in two heights

Easystake by Machus

Easystake.co.nz

Simon Mobile 02108063432

**THIS COULD BE
WHERE YOU
ADVERTISE YOUR
BUSINESS.
CONTACT THE
COMMITTEE TO
FIND OUT MORE**

**THIS COULD BE
WHERE YOU
ADVERTISE YOUR
BUSINESS.
CONTACT THE
COMMITTEE TO
FIND OUT MORE.**

F C
FURNITURE CREATIONS

HOME STAGING



Your Home Deserves to Stand Out — Let's Make Buyers Fall in Love

Selling your home?

In today's competitive market, standing out isn't easy. You want your property to capture attention, attract serious buyers, and sell for top dollar — but you're not sure how to make it shine.

That's where Furniture Creations Home Staging comes in.

We're professional property stylists based in Eureka, and we help homeowners transform their spaces into irresistible showpieces that buyers can't ignore.

Don't let your Waikato property blend in - schedule a consultation with us today!

0274792302

info@furniturecreations.co.nz

www.furniturecreations.co.nz



CTAS

100% NZ Owned and Operated

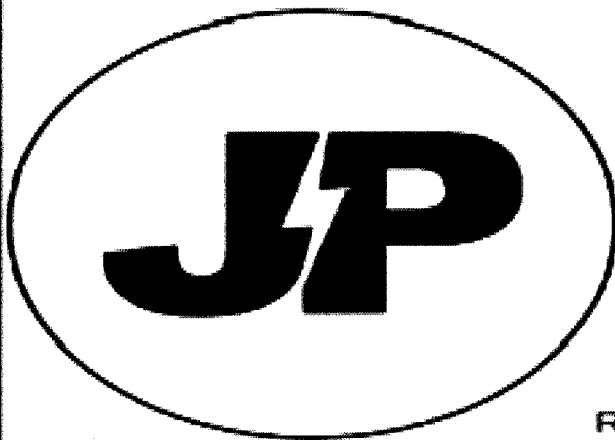
- TXT and Email Alerts and Reminders
- TXT Shortcodes for your business or club
- Flight Status by **TXting** your Flight to 8808
- Live Video and Audio Streaming on the Internet



Reminders by TXT and Email

YOUTXT™

www.ctas.nz | sales@ctas.nz | www.youtxt.nz



JP ELECTRICS

EST 2022

JAMES PALMER

REGISTERED ELECTRICIAN

⚡ 027 756 6804

⚡ james@jpelectrics.nz

⚡ www.jpelectrics.nz

Residential | Commercial | Heat Pumps



QUALITY ASSURED
MASTER
ELECTRICIAN

COMPUTERISED BULK SPREADERS LTD

Cartage and Spreading

FERTILISER, LINE, UREA SPECIALIST

Competitive Rates

PETER JONES

027 496 3370



***37 years service in the Morrinsville district ***

Dig It Earthworks

EARTHMOVING & EXCAVATION

- House Pad & Driveway Prep
- Driveways
- Section clearing
- Footings & Post Hole Boring
- Landscaping & Lawns
- Farm Maintenance & Races
- Truck & Labour Hire
- Calf/Goat/Pig/Chicken Shed Clearing

CONCRETE LAYING

- House & Garage Pads
- Driveways
- Sheds/Workshops
- Patios
- Footpaths



Give Liam a call today for a free quote on 021 02839174



Jackson Contracting



Ag Contracting - Maize & Grass Silage - Hiab & Bulk Haulage

07 887 6688

www.JCLAG.co.nz



Billings Builders Ltd

Licensed Building Practitioner

New housing

Additions & alterations

Dairy sheds

Farm buildings

Contact: Elliot 0275 766 599

Ivan 0274 941 961

167 Hunter Road, Eureka

ivanb.eureka@outlook.co.nz



LOCAL RURAL AGENT SERVICING YOUR LOCAL AREA



Kevin **DEANE**
M 021 970 902

Harcourts

Licensed Agent REAA 2008



GULL EUREKA

PETROL – DIESEL – LPG – OILS & LUBRICANTS

FARM SUPPLIES – GROCERY ITEMS

SHOP HOURS: MONDAY TO FRIDAY 730:AM – 600:PM

FUEL 24 X 7 PETROL & DIESEL FROM OPT (OUTDOOR PAYMENT TERMINAL)

**EFTPOS – RD1 FARM SOURCE – FARMLANDS – CARDLINK- AMEX -
MASTERCARD- VISA**

FOLLOW US ON FACEBOOK FOR DISCOUNT DAYS AND PROMOTIONAL INFORMATION

**Gull Eureka
1291 Morrinsville Road
R.D.6
HAMILTON
Tel: 07 824 1773**

Walling **CONTRACTING LTD**



For all your:

- . Ground Cultivation**
- . Planting**
- . Re-Grassing**
- . Under Sowing**
- . Grass Silage**
- . Maize Silage**
- . Digger & Spray**
- Requirements**

Phone Zach: 027 450 0125

EMAIL: walling.contracting.ltd@gmail.com

EMERGENCY EVACUATION PLAN

**Use these tips to get
prepared:**

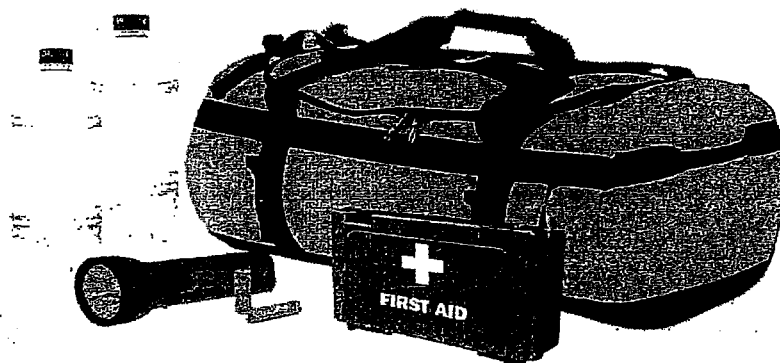
**Gather supplies such as food,
Water, clothing, medications,
batteries and chargers to assemble a
disaster kit.**

Help your neighbours

Share supplies

**Make and keep a list of all emergency contacts. Make sure
all of the family can access these. Save them in your phone**

**Keep neighbours, friends and family informed of your
whereabouts.**





Local Company based at Eureka

Our sheds are all
certified NZ made so by
purchasing from us you
are supporting more
than one New Zealand
Business

Lifestyle
Rural
Industrial
Habitable
Sleepout



Waikato Shed Company

218 Hunter Road

Eureka

07 824 1045

Enquiries@waikatosheds.co.nz

www.waikatosheds.co.nz

WAIKATO SHED COMPANY ✓✓

great sheds, done right!



THIS IS AN INCREDIBLE KITSET - SHED HOUSE HABITABLE COMBO

The shed house combo supplied by Waikato Sheds to Smith & Sons Franklin, who
are constructing it.

- Shed Size - 104m²
- House size - 196m²
- Together, it creates a 3 - bay garage with an attached home
- **Cladding:** Colorsteel on walls and roof (corrugated iron for the roof, T-rib on walls).
- **Feature:** Obada Timber Cladding, pre-stained, with hidden screws for a clean finish.
- **Joinery:** City Glass aluminium Low E double-glazed windows and sliding doors.
- **Roofline:** Clear-span raking ceilings inside, supported by a large steel beam.
- **Garage Doors:** Three roller doors (3 × 2.5m, 3 × 3.5m, 3 × 2.5m) – sized to fit boats, campervans, or a hoist.



Check out the full video on



TALK TO US ABOUT YOUR DREAM SHED

WAIKATO SHED
COMPANY ✓✓
great sheds, done right!





Local Company based at Eureka

Our sheds are all
certified NZ made so by
purchasing from us you
are supporting more
than one New Zealand
Business

Lifestyle
Rural
Industrial
Habitable
Sleepout



No Bull Sheds

218 Hunter Road
Eureka

07 824 1045

Enquiries@nobullsheds.co.nz

www.nobullsheds.co.nz

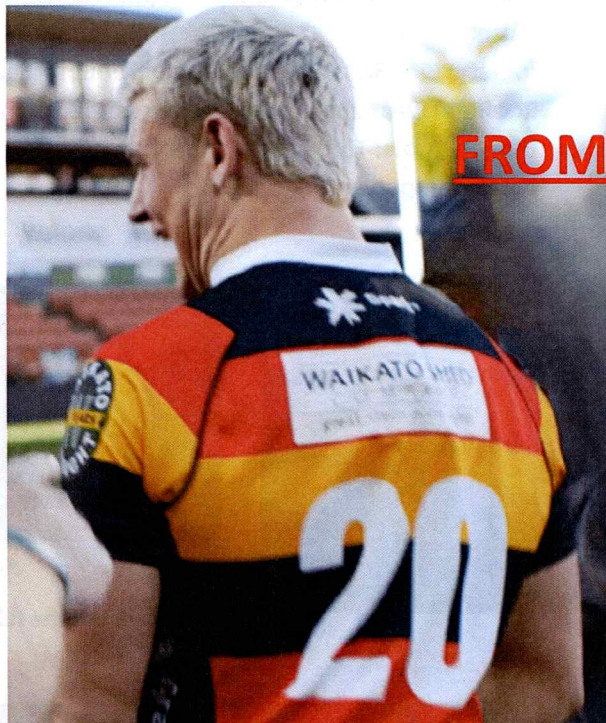


THIS YEAR, WE CELEBRATED A HUGE MILESTONE - 20 YEARS IN BUSINESS!

Brian took us on a classic stroll down memory lane, sharing how Waikato Sheds first kicked off, the challenges we overcame and the wins that shape who we are today.

We're incredibly proud to work alongside other Waikato-based business and truly value the support we've received from the local community over the years.

It's been two decades of hard mahi, great people and solid sheds. Here's to the next 20!



FROM SHEDS TO SCRUM

Celebrating No.20
20 years in business,
20 years of Waikato
pride!

