

Eureka Express

Vol XLVI No. 5 Circ 295

JUNE 2025

www.eurekaexpress.co.nz

editor@eurekaexpress.co.nz



WORLD
POPULATION DAY

FRONT COVER SPONSORED BY

**WAIKATO SHED
COMPANY**
great sheds, done right!



IN RESPECTFULL MEMORY OF

BARRY MAYALL

Where do you start – we have known Barry for best part of 50 years, but the impact Barry had on our lives will be long remembered.

Barry was always willing to lend a hand to fix what was needed. Barry was at the front of most (if not all) of the community working bees, hall, school, local drainage board or anything that needed “doing”. One of the few people who was always ready to help.

Barry liked to “personalize” anything he had. His trusty Honda CT110 was dually equipped with the bottle of oil sitting in a baked bean tin, water pump plier, spade tucked on the side and various pieces of nylon cord to enable him to tie on the carrier what ever possible. He could sneak up behind you without knowing until you turned around, he got better at that when he got the E bike – I think he enjoyed that 😊 .

Barry had helped Ace (Robert Dance) with locating water around his block, using “Allis” (Barry’s second girl fiend) to make his driveway, been put in the bucket and poked up trees to prune or cut down etc. Ready to bale the hay for any small blocker, pass on his knowledge whenever.

For me Barry was a friend, helper, doer, always ready to help and be involved wherever possible. He would nearly always arrive on his bike or ute @ 5.55pm after doing the rounds to come and catch up on the news of the day. Sadly, Barrys physical ability became a challenge in his later years and his driving ability became questionable. After some discussion when we went somewhere together, I drove 😊 .

Sadly, a lot of people living now in Eureka wouldn’t have had the privilege to have met or interacted with Barry or to have been helped by a true, caring, generous local who had the community at heart.

I think it’s also well worth mentioning that Gail (Barry’s wife) had supported Barry even though he was hardly ever home, always doing something somewhere. Also, a big thank you for looking after him in the later years.

Ace Dance & Colin Duncan





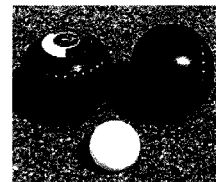
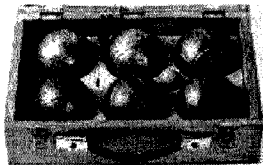
World Population Day

World Population Day is an annual event, observed on July 11 every year, which seeks to raise awareness of global population issues. The event was established by the Governing Council of the United Nations Development Programme in 1989. It was inspired by the public interest in Five Billion Day on July 11, 1987, the approximate date on which the world's population reached five billion people. World Population Day aims to increase people's awareness on various population issues such as the importance of family planning, gender equality, poverty, maternal health and human rights.

Phone List

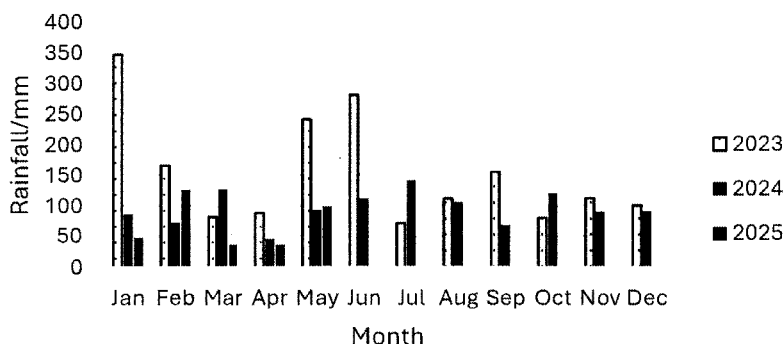
We will be redoing the phone list in July/August. If anyone has any changes they want made with regards to their name and number please let us know via the editor email address. If you know of anyone who is to be added or deleted then please let us know as well.

A big thank you to Eileen Prince from Motumaoho who kindly donated both a Petanque set and some bowling balls to the Eureka Hall. Looks like we will need to organise a games evening at some stage!



Weather	2025	2024
Rainfall total	99mm	93mm
Rain Total for year	343.5mm	424mm
Rainy days	9	12
Most daily rainfall	31mm	31mm
Highest wind speed	44km/hr	48.2km/hr
Temp high	19.6°C	19.6 °C
Temp low	-1.4°C	-3.2 °C

Rainfall



Rubbish bag sticker price increase

From 1 July 2025

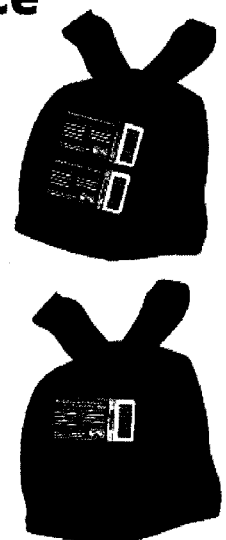
The price of stickers is increasing from \$1.50 to \$3 per rubbish bag.

Please use two blue stickers on each rubbish bag from 1 July. You can use up your old stock of blue stickers.

New pink stickers will be available for purchase from mid-August from retailers.



Scan the QR code to learn more.



Contact Us
0800 492 452
info@waikato.govt.nz
waikato.govt.nz

Waikato
District Council
Te Kaitiaki o Te Waipohiri

Revamp of the Eureka Express

Hi Everyone,

We have been offered help to revamp our monthly express, from a member of our community, but we would like some feedback on what you would like to see, either on a regular occasion or a one off. **Bear in mind that the advertising and some donations are our only source of income.**

So please feel free to respond to our request by emailing the editor@eurekaexpress.co.nz or on the Eureka Community Facebook page.

1. What would you like to see more of, less of
2. Articles about history of our district
3. History of the hall
4. History of family members who, never returned from wars
5. Topical events
6. Other ideas needed please

Presently we are lucky enough to have the sponsorship and advertising of Waikato Sheds who print our front and back cover in colour.

1. Would you like to sponsor a page?
2. Would you like to donate to the express. This can be done in two ways a donation box at Eureka Garage or via our bank account
03-1559-0042600-00
3. Are you receiving our express on a regular basis, if not let us know, once again by emailing the editor or on the notice on the Eureka Community face book page
4. If we find an express in the letter box from the previous month we do not leave another one

All suggestions will be gratefully received and we will look at these in our next monthly meeting.

Thank you for your assistance

Eureka Express Committee

Gardening Tips

Winter is a great time to plan and prepare for warmer months. New season roses and fruit trees are arriving in stores now, along with the summer favourite –strawberries

Its time to start planning your strawberry patch. Planting strawberries in winter temperatures allows plants time to establish a strong root system before spring growth.-plant at least five plants for every family member for a bumper summer supply.

As the cold sets in, it's a good time to plant dormant fruit trees. Take care to plant in the right place: most fruiting plants require full sun and many grow tall and need room to spread their branches (as a rule, plant fruit trees at least 4 m apart) Prior to planting, soak the root ball in a bucket of water for at least a hour. Dig a hole larger than the root ball or container of the plant. Place the tree in the hole on top of some compost and existing soil, then secure the tree with a wooden stake and some flexible ties.

Powerful free fertilizer

Banana Peel Fertilizer: Banana peels are rich in potassium which is essential for fruit development.

Chop banana peels into small pieces, bury the pieces in the soil near the base of the plant or soak them in water for a few days to create a liquid fertilizer.

Eggshell Fertilizer: Eggshell provides calcium, which strengthens plant cell wall and promotes healthy fruit growth.

Crush dried eggshells into a fine powder using a blender or mortar and pestle.

Sprinkle the egg shell powder around the base of the plants or mix in the soil.

For best results combine both banana peel and eggshell fertilizers to provide a balanced nutrient supply Apply these homemade fertilizers once a month during growing season for optimal fruit production.



Lemon Raspberry Loaf with Lemon Glaze

Ingredients:

1 ½ cups all-purpose flour, plus 1 tablespoon extra
1 tsp BP
½ tsp salt
1/3 cup unsalted butter, softened
1 cup granulated sugar
2 large eggs
2 tsps lemon zest
2 tbsps freshly squeezed lemon juice
½ cup milk
1 cup frozen raspberries

Method:

Preheat oven to 350 deg F. Grease and flour a 9 x 5 inch loaf pan.

In a mixing bowl, whisk together the flour (not the extra tbsp), baking powder and salt. Set aside.

In a separate large bowl, cream together the softened butter and sugar until light and fluffy.

Beat in the eggs, one at a time, followed by the lemon zest and lemon juice until well combined.

Gradually add the flour mixture to the wet ingredients, alternating with the milk. Begin and end with the flour mixtures, mixing just until combined.

Toss raspberries in the 1 tbsp of flour. (This step prevents the raspberries from dropping downwards to the bottom of the loaf during baking) gently fold in the raspberries. Pour the batter into the loaf pan and smooth the top. Bake for 50-55 mins until cooked.

Remove from the oven and let the loaf cool in the pan for 10 minutes before transferring to a wire rack.



Lemon Glaze:

1 cup icing sugar
Zest of 1 lemon
2-3 tbsps freshly squeezed lemon juice

Method:

In a small bowl, whisk together the sugar, zest and juice until smooth and glossy.

Drizzle over the cooled loaf allowing it to drip down the sides.

Apricot and Cranberry Loaf

Ingredients:

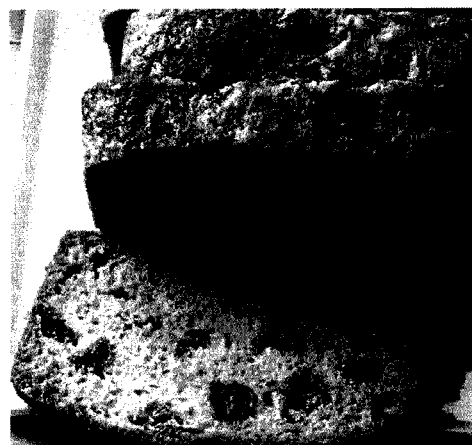
1 ¼ cups self-raising flour
½ cup firmly packed brown sugar
¾ cup chopped dried apricots
¾ cup sweetened dried cranberries
90g butter, melted
1 egg, lightly beaten
½ cup milk
1/3 cup golden syrup

Method:

Lightly grease a medium (12cm x 22cm) loaf pan and line base with baking paper.

Sift flour into a bowl, stir in brown sugar, apricots and cranberries. Combine melted margarine, egg, milk and golden syrup in a large jug. Make a well in the dry ingredients and add egg mixture. Stir until well combined.

Pour into pan and bake for 50-55 minutes at 180 deg C. Remove from oven and stand in pan for 10 minutes before turning onto a wire rack.

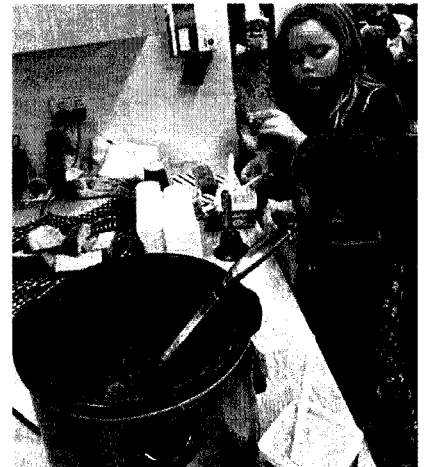




June has been all about Matariki at Pūkeko Preschool. Matariki marks the beginning of the Māori New Year. It is a time for hākari (feasting), gratitude, whānau, remembering those passed and looking forward to what's to come. We have been busy planting our winter veges, preparing soup for our Whānau Evening, making kites to fly, and learning about harakeke, poi and rakau. It has been a learning rich month here, and we have loved every moment of it. Our Whānau Evening was a wonderful time full of manaaki!



We have our **AGM** coming up on **Monday 25th August 2025 at 6:30pm** and all are welcome to come along and find out more about the wonderful Pūkeko Preschool!



Ngā mihi,
Shell Proebstel
*Curriculum Provider and
Educational Lead*
Pūkeko Country Preschool
07 824 086



June, Term 2, 2025 - Trees for Survival Planting Day

We had an awesome day planting trees on our planting day at a local farm. The children were extremely focused and worked very hard to plant approximately 600 native plants with the help of staff, whaanau, the farmers and the team from Trees for Survival. We were all very proud of our effort. Some of the BNZ team came along to provide us with a yummy bbq lunch, and we acknowledge the support of Fonterra who provided the seedlings which were planted by the students last year. Thank you to our families who assisted on the day.





RESPECT - RESILIENCE - RESPONSIBILITY

TAUWHARE SCHOOL

Term 2 – JUNE 2025

WWW.TAUWHARE.SCHOOL.NZ

TOP NEWS

Grandparents Day

This term we hosted our annual Grandparents Day, where we welcomed families from across New Zealand to our school. After each class displayed some learning in the form of a performance (Photo below), a session of Jump Jam took place outside. From the photo to the left, grandparents joined in the fun, action and dance moves as our Jump Jam Leaders showed all the moves to follow. What an incredible day celebrating with incredible people who mean so much to us.

Pink Shirt Day

This year we joined in with the rest of the country in having our annual Pink Shirt Day. Pink Shirt Day is focused on promoting kindness and preventing bullying. We promote kindness across our school each week and use our SMART Virtues in the playground and classroom. This year we formed a giant heart on our court, and made heart symbols with our hands to represent aroha and kindness.

Enviro-School – Tauwhare School

This year, we've partnered with EnviroSchools to map our school grounds and identify areas for environmental development. A key focus is revitalizing our garden space. With support from EnviroSchools and the generous Thursday Pre-School group, we're enhancing this area to provide better sustainability learning opportunities. This initiative ties into our first-ever Enviro Day, a dedicated day focused entirely on our school's outdoor environment.



The bare minimum computer

If you're on a budget, and have only basic computing needs (document editing, internet access and email), what can you get away with in 2025? Well, you don't need a new computer, that's for sure. Despite what Microsoft says, Windows 11 will run on any CPU made past 2011, so forget about having to have the latest and greatest. In fact, you might just pick up a cheap deal on trademe from someone mistakenly throwing out their old machine - due to Windows 10 no longer being supported come October and them receiving a message from Microsoft saying that their machine isn't "ready" for Windows 11. I've written previously about how this is incorrect.

But I would say you want a CPU from at least 2014 or later - that's because they have an instruction set called 'AVX2' which is needed by some newer software packages. Also, most desktop motherboards and power supplies I see last about 10-12 years before they start to have issues, so you have to be careful. Other than that, to run Windows 11 properly you need a solid state drive or NVMe drive (these are default nowadays) and 8 gigabytes of RAM - Windows 11 will run on less, but not happily. But that's about it. That's about it. Upgrading from Windows 10 to 11 is still free, though it may require assistance from a techie like myself for older computers.

Of course, you can eschew Windows entirely and go down the Linux route. 'Mint' is a distribution of Linux which is pretty popular - it looks like Windows for the most part and is pretty easy to install. But the difficulty of linux is when you have... difficulties. Problems are generally harder to fix in linux due to a smaller userbase and less information on the internet on how to fix each specific problem. And those problems can be very specific to a particular computer and setup. But if you're a techie it's a free option that works just fine.

If you're on Mac, again you're pretty well off so long as your computer was made past 2012 or so. Using a solution called 'Opencore' most machines can be brought up to the latest versions of the Mac operating system even if they're no longer "officially" supported by Apple - provided you're using a solid state drive, once again. For stability purposes I often recommend people hang back an OS version or so on Mac - the latest tends to always be a few apples short of a strudel.

In terms of software you don't have to spend too much either. For office work Libreoffice is free, hence the name, and works fine with all Microsoft office documents, and on all common operating systems. It even opens Publisher documents, which the latest versions of Microsoft Office do not (Publisher has been removed). In terms of other paid software, there's plenty of cheaper or free solutions competing with the likes of Photoshop, Lightroom and other Adobe products. But for hardware, a computer which meets basic needs shouldn't set you back more than \$400 on the second hand market. Throw in a 2nd hand graphics card if you're into gaming, and you're away.

BTW, a short announcement: I have a young guy who's started doing work for me, and he's quite happy to do tutoring work for those who need it. He's a lot more patient than I am :)

Contact Matt at 0211348576 or info@homepcsupport.co.nz

\$80 per hour, or
\$70 for drop-off-
to-workshop
services.



Bentley Home PC Support

WINTER WORDSEARCH

Y X B I C I C L E N
W I Y P G F F L B C
B O O T S R H H P O
U C O A T O G A N L
L D Z N K Z J T I D
E K G M N E K Q N S
J S K I I N G C J O
S C A R F R P X F C
S Z Z K Q P P C A K
D F Q U I L T I A S

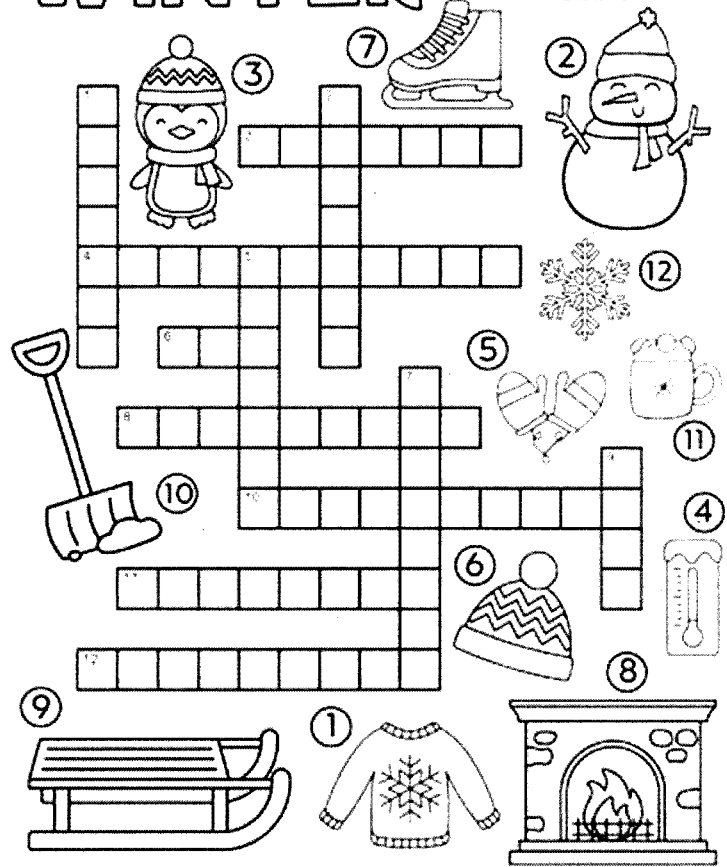
WORD LIST

BOOTS
COAT
COLD
FROZEN
HAT

ICICLE
QUILT
SCARF
SKIING
SOCKS

WINTER

Crossword Puzzle



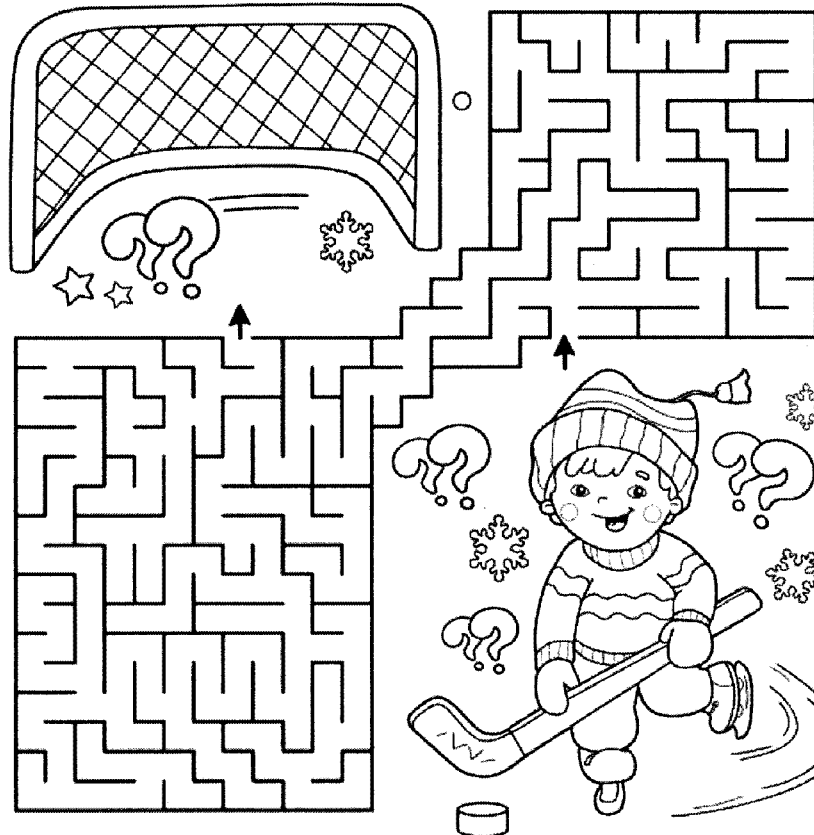
1 sweater, 2 snowman, 3 penguin, 4 thermometer, 5 mittens, 6 hat, 7 iceskate, 8 fireplace, 9 sled, 10 snowshovel, 11 hotcocoa, 12 snowflake

WINTER WORD SCRAMBLE

1. l c d o _____
2. n m w n a s o _____
3. n i g r f z e e _____
4. c i e _____
5. o f t r s _____
6. w f k s o a e n l _____
7. s o e g l v _____
8. t h a _____
9. t c o a _____
10. t b s o o _____
11. a r c s f _____
12. o l v e h s _____
13. s s w b o n a l l _____
14. d d g i n e s l _____
15. k n g s i i _____



Cold, snowman, freezing, ice, frost, snowflake, gloves, hat, coat, boots, scarf, shovel, snowballs, sledding, skiing





Tamahere-Woodlands Councillors' update June 2025

Eureka volunteers honoured with Mayoral Awards

Gayle and Lionel Orr have been closely associated with Eureka community life for nearly 20 years. As they step down from community responsibilities to fulfil a planned move to Morrinsville, it is fitting that both Gayle and Lionel are recognised for their years of service with Mayoral Awards this year. Gayle has served on the Eureka Express committee for more than 18 years, serving as its treasurer for 9 years and Editor for the past 4 years. She has also served on the Eureka Hall Committee for 7 years, and for the last three as Chair. Lionel has also previously served as Eureka Hall Committee treasurer for 12 years.

Together, Lionel and Gayle have regularly organised and led the annual ANZAC service at the Eureka cenotaph each year, and have even promised to continue to be involved despite their move to Morrinsville!

At the Mayoral Awards ceremony in the Council chambers earlier this month, Lionel and Gayle were publicly recognised in absentia (while they were taking a much-needed holiday), and will be personally presented with their awards as soon as a time can be arranged.



Congratulations to all Waikato District Mayoral Award recipients, and thank you for your outstanding voluntary contributions over many years to your community.

Other Tamahere-Woodlands Ward recipients this year are:

John Sheat, a founding trustee of Tamahere-Mangaone Restoration Trust, and

Charles Fletcher, chair of Tamahere Community Committee (and a committee member for 15 years).

Use two blue stickers on rubbish bags from 1 July

Remember to put two blue stickers on rubbish bags that you put out for collection after 1 July. Rubbish bag sticker charges rise from \$1.50 to \$3.00 from 1 July as part of the Council's Long Term Plan changes to fees and charges. You can use two blue stickers on bags until the end of August. After that please swap any leftover blue stickers for the equivalent value in new pink stickers at any Council office. New pink stickers will be on sale from mid-August.

Rubbish stickers haven't increased in price since 2018 but landfill fees have more than doubled over that time, and so the Council has to ensure those costs are covered. Early public consultation on the LTP in October last year determined that most people wanted to keep a reasonable proportion of rubbish costs on user pays rather than targeted rates, so that people pay for what they use and will benefit from keeping their rubbish down.

Long Term Plan (LTP) to be adopted 30 June

The Council is expected to adopt the Long Term Plan 2025-34 on 30 June. You can check the effect on your rates by going to our rating information database on www.waikatodistrict.govt.nz/rid.

SH1B Telephone Rd rail crossing re-opening end of July

The Telephone Rd rail crossing is expected to open at the end of July. Watch:

www.nzta.govt.nz/projects. **Dog registration fees due by 31 July**

Remember to pay your annual dog registration by 31 July. Penalty fees apply after that date. Discounts are available for 'approved' owners. To learn more – and to pay your dog registration online – please go to www.waikatodistrict.co.nz/dogs

Reminder to have your say on neighbourhood parks and sports parks

Check out the draft management plans for Neighbourhood Parks and Sports Parks and let Council know if changes are needed. Consultation closes on **Monday 14 July**. Go to www.waikatodistrict.govt.nz/say-it.

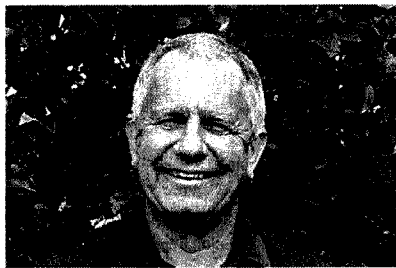
In Tamahere-Woodlands Ward the Neighbourhood Parks covered by these plans are: Good Street Reserve and Jack Foster Reserve in Matangi, Hukanui Park in Gordonton, and Te Awa Reserve in Tamahere. The Sports Parks in the Ward are: Gordonton Reserve on College Dr, Matangi Recreation Reserve at the Sports Club on Tauwhare Rd, and Tamahere Park which runs between Devine Rd and Wiremu Tamihana Dr. Any other open spaces are categorised differently and managed under different plans.

Use Antenno to keep in touch with Council

The Council has responded to more than 700 requests for action (eg. dumped rubbish to remove, or pot holes to fill) through the mobile app, Antenno, since it was introduced for residents and ratepayers in October last year.

The Council has now activated Antenno's outgoing messages function to send timely notifications directly to residents about local issues like a road closure, rubbish collection changes, local events, and emergency alerts targeted to your registered location(s). Download the app from the [App Store](#) or [Google Play](#) and try it out.

Contact your Tamahere-Woodlands Councillors:



Crystal Beavis, mob 0275 957 927, email crystal.beavis@waidc.govt.nz

Mike Keir, mob 027 449 3012, email mike.keir@waidc.govt.nz



JUSTICE OF THE PEACE FOR EUREKA

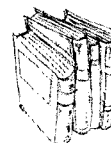
Kevin Deane is our local JP. He is located in Eureka.

Please call or text to arrange an appointment - ph: 021 970902

Library Box Reminder:

With the winter months ahead, a good time to catch up on reading, remember to visit our little post box library in front of hall door. We try to replenish these on a weekly basis. Please feel free to pop in change your books, or simply borrow one, or leave a few books. We will shortly have our second post box up and running and hope to add a few children's books.

If you have any spare books, feel free to drop in my letter box 101 Hooper Rd.





161 Morrinsville Road, Hamilton, 3286

Phone: 07 856 4522 Email enquiries@newsteadvets.co.nz

Website: www.newsteadvets.co.nz

Newstead Vets offer a full range of veterinary services for small animals including:

- * Consultations (by appointment only)
- * Soft Tissue and Orthopaedic Surgery
- * Digital Radiography and Ultrasonography
- * NZVA Microchipping Accredited Practice
- * Nutrition and product Advice
- * Rural location with ample parking
- * Referral to Specialists
- * PennHIP Certified
- * Full Laboratory Service
- * Hospitalisation
- * Cremation Service
- * Convenient Online Shop

G&M FENCING

WAIKATO WIDE

For all your rural, lifestyle and residential fencing needs



Contact Mitch

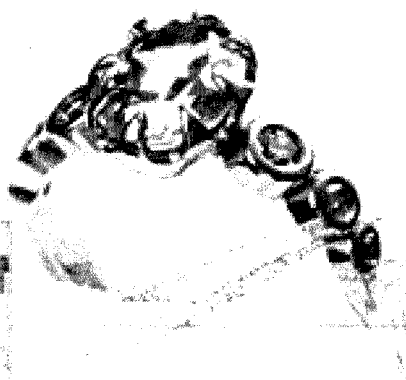
0278418055

gandmfencingnz@gmail.com

Local Boutique Jeweller

DESIGN MANUFACTURE SHOWROOM

- Showroom by appointment only
- Private personal shopping experience
- Repairs and maintenance
- Custom design & manufacturing
- Remodelling old or unworn jewellery
- Unique, one-of-a-kind designs & small collection jewellery
- Independent insurance valuation services
- Wine and cheese shopping experience for small groups



GET IN TOUCH

[@erikawatsonjewellery](https://www.instagram.com/erikawatsonjewellery)

[@ErikaWatsonJewellery](https://www.facebook.com/erikawatsonjewellery)

erikawatsonjewellery@gmail.com

Erikawatsonjewellery.com

021 022 49300

Kuranui Road, Motumaohe

LAWNMOWING & GARDENING SERVICES

Professional lawn and garden care services



Alex & Sharyn Macdonald

For free no-obligation quote:

Phone 027 479 7282

or 027 308 6781

E::macdonaldmowing@gmail.com

Www.lawnandgardenservices.co.nz

Residential — Rural — Commercial

Spraying — Fertilizing — Weeding

HAIRFIELDS

HAIR DESIGN

95 HOOPER ROAD

Sharon Laurent

Full salon facility in Eureka

Total hair care professional

and many years experience

Agent for Nutrimetics

Open Tuesday to Thursday

Late nights Tues/Thurs

Tel. 027 280 5978



Servicing and installation

on all types of pumps

Full water treatment

service available

DAREN ROSS

Ph: 8241726

Or 0274 346 571

Email:

admin@rosspumps.co.nz

Morrinsville Professional Carpet Cleaning



Carpets and rugs

Lounge suites

Flood recovery

Latest equipment

Very best chemicals

Call David 02 777 200 30



- Gutters vacuum cleaned
- Moss, lichen and mould treatments to roofs, driveways and paths
- Soft wash to houses soffits and fences
- Water blasting and drain unblocking
- Green gunge gone!

Call David 02 777 200 30



Edie Sweeney

Senior Consultant/Owner

Cruising specialist and all aspects of travel

Phone 021 734 4140

Email

edie@thetravelbrokers.co.nz



A higher standard



**Easystake,
Your garden plant support**



Easystake: easy to use, easy to place, easy to move.
galvanized steel construction for long life

Bloom Stand: displays your pots of colour, position for maximum impact, galvanized steel and available in two heights

Easystake by Machus

Easystake.co.nz

Simon Mobile 02108063432



CTAS

100% NZ Owned and Operated

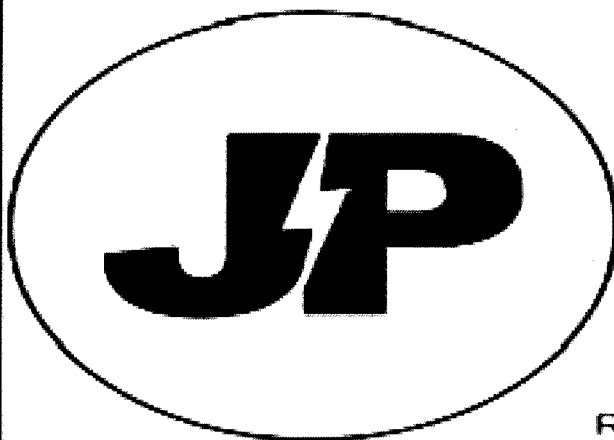
- TXT and Email Alerts and Reminders
- TXT Shortcodes for your business or club
- Flight Status by TXting your Flight to 8808
- Live Video and Audio Streaming on the Internet



Reminders by TXT and Email

YOUTXT™

www.ctas.nz | sales@ctas.nz | www.youtxt.nz



JP ELECTRICS

EST 2002

JAMES PALMER

REGISTERED ELECTRICIAN

⚡ 027 756 6804

⚡ james@jpelectrics.nz

⚡ www.jpelectrics.nz

Residential | Commercial | Heat Pumps



QUALITY ASSURED
**MASTER
ELECTRICIAN**

COMPUTERISED BULK SPREADERS LTD

Cartage and Spreading

FERTILISER, LINE, UREA SPECIALIST

Competitive Rates

PETER JONES

027 496 3370



***37 years service in the Morrinsville district ***

Dig It Earthworks

EARTHMOVING & EXCAVATION

- House Pad & Driveway Prep
- Driveways
- Section clearing
- Footings & Post Hole Boring
- Landscaping & Lawns
- Farm Maintenance & Races
- Truck & Labour Hire
- Calf/Goat/Pig/Chicken Shed Clearing

CONCRETE LAYING

- House & Garage Pads
- Driveways
- Sheds/Workshops
- Patios
- Footpaths



Give Liam a call today for a free quote on 021 02839174



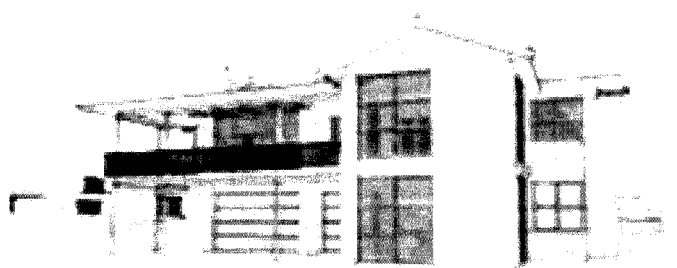
Jackson Contracting



Ag Contracting - Maize & Grass Silage - Hiab & Bulk Haulage

07 887 6688

www.JCLAG.co.nz



Billings Builders Ltd

Licensed Building Practitioner

New housing

Additions & alterations

Dairy sheds

Farm buildings

Contact: Elliot 0275 766 599

Ivan 0274 941 961

167 Hunter Road, Eureka

ivanb.eureka@outlook.co.nz



LOCAL RURAL AGENT SERVICING YOUR LOCAL AREA



Kevin **DEANE**
M 021 970 902

Harcourts

Licensed Agent REAA 2008



GULL EUREKA

PETROL – DIESEL – LPG – OILS & LUBRICANTS

FARM SUPPLIES – GROCERY ITEMS

SHOP HOURS: MONDAY TO FRIDAY 730:AM – 600:PM

FUEL 24 X 7 PETROL & DIESEL FROM OPT (OUTDOOR PAYMENT TERMINAL)

**EFTPOS – RD1 FARM SOURCE – FARMLANDS – CARDLINK- AMEX -
MASTERCARD- VISA**

FOLLOW US ON FACEBOOK FOR DISCOUNT DAYS AND PROMOTIONAL INFORMATION

**Gull Eureka
1291 Morrinsville Road
R.D.6
HAMILTON
Tel: 07 824 1773**

Walling **CONTRACTING LTD**



For all your:

- . Ground Cultivation**
- . Planting**
- . Re-Grassing**
- . Under Sowing**
- . Grass Silage**
- . Maize Silage**
- . Digger & Spray**
- Requirements**

Phone Zach: 027 450 0125

EMAIL: walling.contracting.ltd@gmail.com

EMERGENCY EVACUATION PLAN

**Use these tips to get
prepared:**

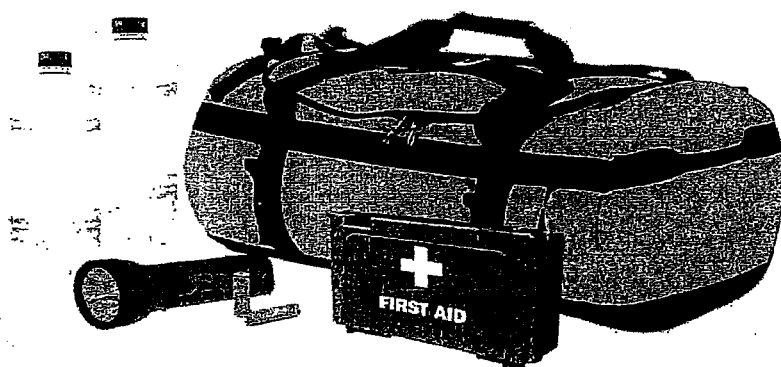
**Gather supplies such as food,
Water, clothing, medications,
batteries and chargers to assemble a
disaster kit.**

Help your neighbours

Share supplies

**Make and keep a list of all emergency contacts. Make sure
all of the family can access these. Save them in your phone**

**Keep neighbours, friends and family informed of your
whereabouts.**





Local Company based at Eureka

Our sheds are all
certified NZ made so by
purchasing from us you
are supporting more
than one New Zealand
Business

Lifestyle
Rural
Industrial
Habitable
Sleepout
Stables



Waikato Shed Company

218 Hunter Road
Eureka
07 824 1045

Enquiries@waikatosheds.co.nz
www.waikatosheds.co.nz

WAIKATO SHED COMPANY ✓✓ great sheds, done right!

Kitset Excellence—The ultimate Lifestyle Shed Compliments Fraemohs House



Fraemohs is one of NZ's most innovative timber homes, a stunning solid timber home with its unique interlocking laminated logs that serve as structure, insulation and interior finish all in one.

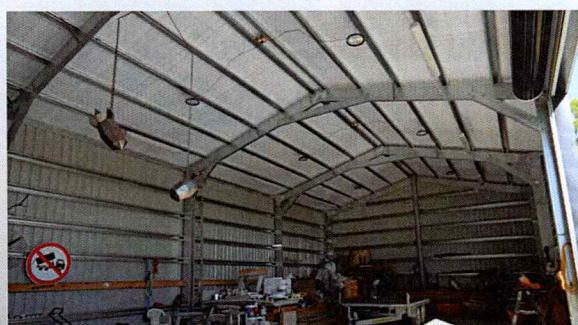
The shed built by its passionate owners, this lifestyle shed isn't just a shed—it's a statement

Shed Specs That Impress:

- Massive footprint: 10m wide x 20m long x 5m high
- 4 Spacious bays, each 5m wide
- 2 Industrial Series 2 doors – perfect for truck access
- Clad in striking Ebony T-Rib Colorsteel for a bold, modern look
- Solid NZ Steel C-section columns & exposed rafters offer a wide-open interior
- Ready for a future mezzanine floor upgrade
- Engineered to IL2 standard – built tougher and smarter

Built for the Elements:

Located in a high wind zone, the kitset is seriously braced and reinforced. With closer-spaced, chunkier Girts, this structure is locked tight for ultimate durability and performance.



WATCH THE



On our



Channel

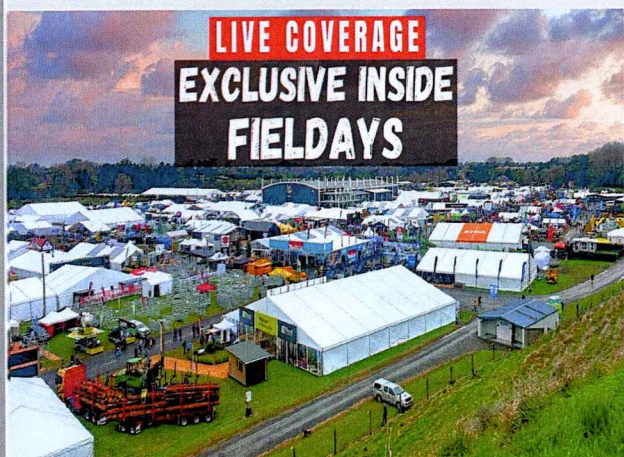
FIELDAYS 2025

Mystery Creek came alive this past week and Waikato Sheds were there show casing our sheds and getting amongst the crowds

Check out all the action on our YouTube

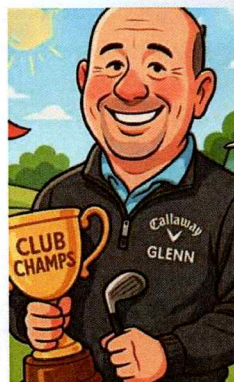
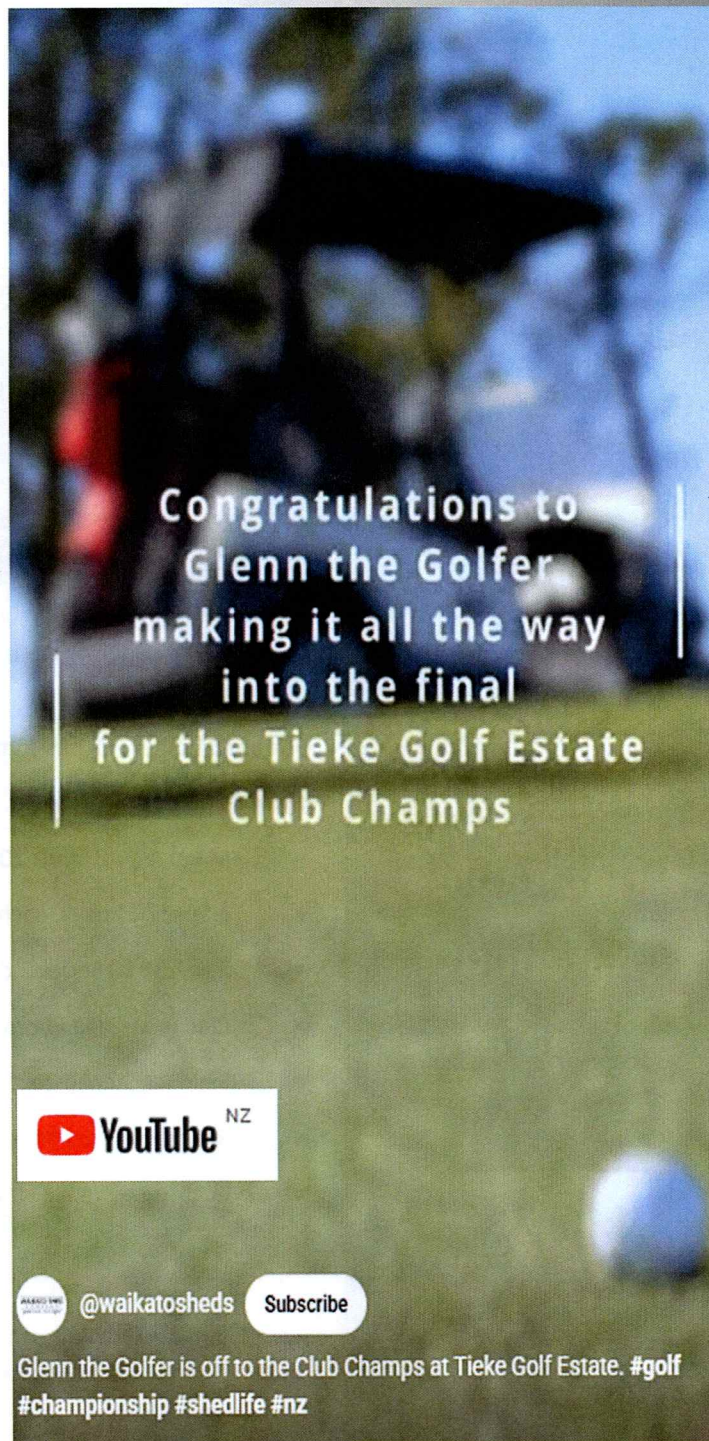


The Waikato Shed Co...
The Waikato ... June 19



See all the sights and sounds
and just about every stall at
Fieldays

This year our team roamed the streets of Fieldays to bring you LIVE up close interviews with the local businesses that build the backbone of New Zealand. We had a fantastic time chatting with our viewers on TikTok...



Big Weekend Ahead!

Good luck out there
Glenn

The team are cheering
you on