

# Eureka Express

Vol XLVI No. 2 Circ 295

[www.eurekaexpress.co.nz](http://www.eurekaexpress.co.nz)

MARCH 2025

[editor@eurekaexpress.co.nz](mailto:editor@eurekaexpress.co.nz)



*Happy Easter*

FRONT COVER SPONSORED BY

**WAIKATO SHED**  
COMPANY ✓  
great sheds, done right!



## **EDITORIAL**

In 1972, newly married we bought a farm property on Tauwhare Road starting with a small Hereford Stud,

Our first child Janean arrived 1973, and second child Darren 1975. They both attended Eureka school which was close enough for them to bike too. Roger Moltzen was the headmaster and teachers Mrs Russell and Mrs Ballié gave them a great start to their education.

The Eureka community was active with Badminton both night and day, Ladies Social club, guides and scouts at Matangi. Local social occasions and area balls were a highlight.

In 1979 we decided Angora goat farming was something to invest our time in. Angora goats produce mohair fibre. We purchased a buck from Lands and Survey Angora Goat farm auction at Waitangi then some Saanen does to X breed with.

We then decided to import a small Purebred flock from Tasmania, having to setup a quarantine area for the new arrivals. There was a barrier fence of 1 metre around the quarantine paddocks, with a foot bath for us to use before entering and exiting the areas. The animals had to be in quarantine for 6 months being checked by Ministry of Agriculture often.

Now no holding back, we decided to increase stock numbers by embryo transplanting from our imported pure-bred mohair does. We sourced many wild goats from the hills to use as surrogate mothers. In fact, one truck load was so wild they were running around the insides of our half round shed. This was the start of embryo transplanting with goats in NZ.

These were very interesting times for us, keeping us busy with our children also involved. They loved kidding time and were the first children to have goat kids at Calf Club Day.

We were Inaugural members of the Waikato Mohair Produces club and the New Zealand Mohair Producers Association. With Graeme becoming very involved many open educational days on Goats were held at home in our specially built facilities. He was on the NZ Board and spent a lot of time in Wellington having discussions with the Member of Ministry of Agriculture regarding rules and regulations of Goat farming. He also represented the industry offshore during its formative years.

Then in the late 1980s, Roger Nomics happened!! The Animal Livestock scheme was introduced for all livestock. The prices fell out of the goats, so a lot of farmers quit farming and / or lost a lot of money.

As well as farming we had a retail shop in Morrinsville. The Wool Bar, hence, the interest in mohair fibre, and later TopGear Surf and Street wear.

The menswear store next door came up for sale, so we bought that, changed the name to TopGear Surf and Streetwear. Younger male and female clothing were a big part of our sales. We had a car ram raid one stormy night with the car ending up in the middle of the store. Demolishing the window and display areas. The start of Ram Raids.

The Wool Bar was a very busy shop. Hand knitting Fashion garments and handcrafts were popular hobbies.

We had to Indent the Wool, ordering 1 year in advance, having to make decisions on what may be popular the next season. Choosing colours and quantities was a challenge. Thankfully our staff were involved and gave excellent opinions and input. We closed the Wool Bar after 50 years in the trade. Internet shopping was a big reason and also the younger generation did not have time for handcrafting.

Graeme also ran a Corporate and Uniform clothing division, screen printing and embroidering logos on business and sports clothing which still operates today.

We had sold TopGear 10 years earlier and this was closed just before covid.

Over the years we have also travelled extensively, seeing how the other people live and survive, from the basic of basics in 3<sup>rd</sup> world countries to the wealth of other countries. Unfortunately, Covid and health have halted travel for a while.

So, after living in Eureka for 52 years it is now time to downsize. We have built and shifted into Morrinsville.

Eureka has been an easy place to live, with Cambridge and Hamilton close by. We have seen many Residents come and go in the 52 years and many a good friendship has developed with many of them.

We have been involved with the community with Lynne delivering the Eureka Express for many years. The community has changed and increased in population over the years, now we do not know so many of the residents.

We have sold our farm to Harley Cushing and Maria Sanson who will take over at the end of April. We wish them all the best for their new adventure with life at Eureka.

See you in Morrinsville

Lynne and Graeme Brewer



# **EUREKA EXPRESS EASTER COLOURING COMPETITION**

**For children in the Eureka Express Delivery Area only**

**Groups:** Pre-schoolers  
Juniors 5 - 7 years  
Intermediate 8 – 10 years  
Seniors 11 years and upward

**Only one entry per person**  
Further copies available from Gull Eureka

**Please have entries in to Gull Eureka  
By Monday 14<sup>th</sup> April**

Judging will take place and prize-winners will be advised  
prior to Easter  
Winners will be named in the April Eureka Express

(Crayons, pencils or felts may be used)

\*\*\*\*\*

Please complete your details clearly in pen (**not felt or crayon**) so that we can easily contact you

FIRST NAME: .....

LAST NAME: .....

AGE: .....

RESIDENTIAL ADDRESS (including road number)

.....

CONTACT PHONE NUMBER: .....

# EASTER

## word scramble

YBAB CSICHK \_\_\_\_\_  
 TSABEK \_\_\_\_\_  
 DEDY SGGE \_\_\_\_\_  
 TRARCO \_\_\_\_\_  
 LYJEL ASEBN \_\_\_\_\_  
 SEEPP \_\_\_\_\_  
 NYUNB \_\_\_\_\_  
 ESEART \_\_\_\_\_  
 CTOHCLAOE \_\_\_\_\_  
 GPNIRS \_\_\_\_\_  
 GGE NTHU \_\_\_\_\_  
 PLUTIS \_\_\_\_\_



Baby chicks, basket, dyed eggs, carrot,  
 jellybeans, peeps, bunny, easter, chocolate,  
 spring, egg hunt, tulips

## Easter Word Search

F L O W E R S G N I R P S Z O  
 S K C I H C T E B P A R A D E  
 Y T P B Z E T M P M G E H Y S  
 D G X P N A R J B S P A A E S  
 N E Z N R U A S U B T S P D A  
 A K O O A E D N N T D T P I R  
 C B C E B T I A N E A E Y Y G  
 X E G T B A T E Y K F R G L P  
 D G E N I L I B U S F T G I S  
 S C I E T O O Y V A O W E L U  
 S K C U D C N L I B D O M V N  
 U I Y K R O F L S P I L U T D  
 O H Y G V H T E V A L X J F A  
 K X R A W C F J A H U N T J Y  
 Y L I M A F A S P E E P S E M

Basket  
 Bonnet  
 Bunny  
 Candy  
 Chicks  
 Chocolate  
 Daffodil  
 Decorate  
 Ducks

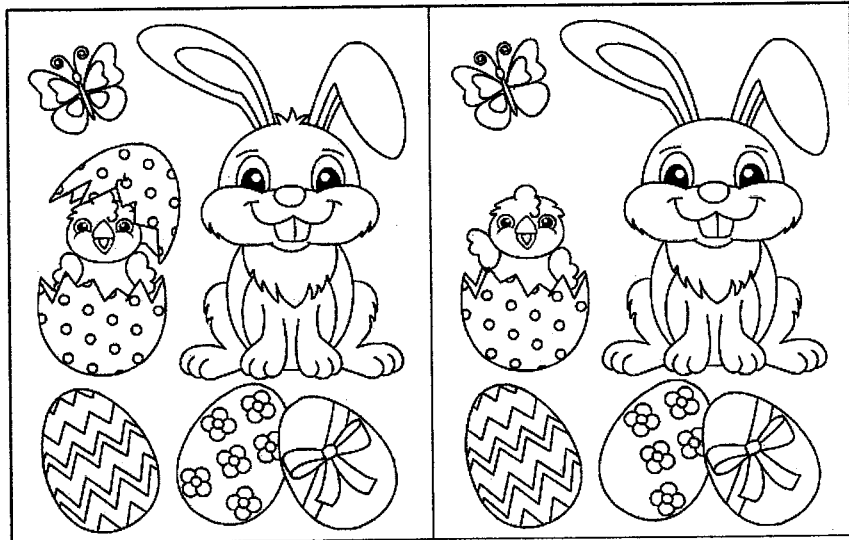
Dye  
 Easter  
 Egg Hunt  
 Eggs  
 Family  
 Flowers  
 Grass  
 Happy  
 Jellybeans

Lily  
 Parade  
 Peeps  
 Rabbit  
 Spring  
 Sunday  
 Tradition  
 Tulips



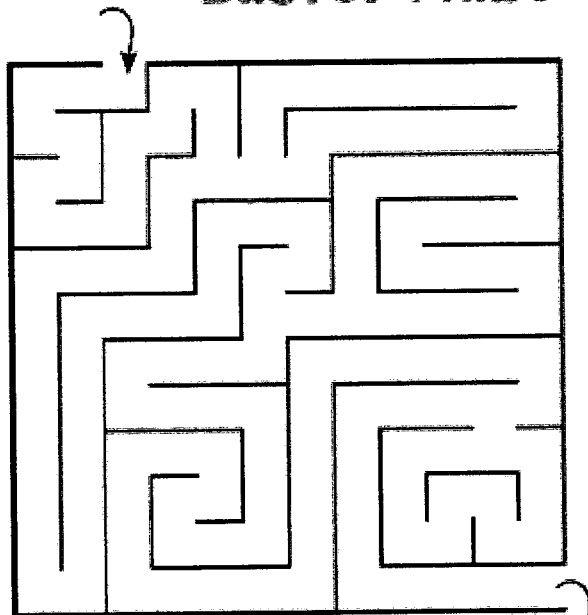
## Easter

Spot 5 differences!



Butterfly wing, chick wing, chick egg top,  
 rabbit hair, egg flower

## Easter Maze



It's Easter Day and the baby chick just hatched from her egg. Help her take her first steps and find her way through the chicken coop.

## Editors report - 17 March 2025

Welcome to you all and thank you for coming to the AGM. As I look back on the last couple of years since my first year as Editor or co-ordinator of the Express, I have seen the Express moving forward another step. This year will be my last year as Editor, but I will remain on the committee for a while yet to support the new Editor and the committee. I really do enjoy getting together for the meetings and printing day. Always a good catch up with everyone. Who knows, I might make 20 years on the committee, only 18 months to go and I would have achieved that milestone.

I would like to say a huge thank you to all the committee members, supporters, delivery people all of which without your input the Express wouldn't be printed. A special thank you Waikato Sheds, who continue to print our front page in colour which means they sponsor our front page, and our front pages look amazing. Really eye catching I must say. And it does give the paper a lift and encourages people to check out the inside. Linda does a wonderful job designing them. Thank you, Linda, and Cathy for having them ready on printing day.

The committee is very strong, albeit low in numbers, however, we all pitch in and do our jobs, and we seem to run like an oiled machine. Glenys you keep the financials in order, taxing at times I know, but we appreciate the work you do. Lin, every month you have to tax your brain to find someone to write the editorial, you always get someone, and they do write on some interesting topics. I know the people writing the articles need your reminder each month.

I would just like to say thank you to you all. Sharon, you continue to provide us with some very yummy recipes, some I have tried, the gardening is interesting, if you have a garden, which I do not, but there are lots of helpful hints. We have a new delivery person for Tauwhare and Hunter Road, David Horne, who replaced Lynne Brewer. Lynne has been delivering the express for many years on these roads, I would like to thank her for her contribution over the years.

We have a few people behind the scenes and help with the setup, printing or in Michelle's case, she keeps the website up to date. I encourage people to check it out, it has a lot of information on it, plus past copies of the Express.

Finally, thank you to Linda, Lorraine, Gail, Jill and Heather for helping on printing day. It's always good to catch up and have a chat.

I look forward to seeing the Express grow more this year, and to continue to work with you all as a team.

Gayle Orr

### Hillcrest Incorporated Martial Arts

#### **New intake classes for beginners and experienced students aged 8 and up**

- Start Tuesday 1<sup>st</sup> & Thursday 3<sup>rd</sup> April at 5:45pm.
- Train to learn a hybrid martial art based on ITF style Tae Kwon Do (not Olympic style)
- Includes grappling and self defence.
- Added benefits:
  - increased flexibility, fitness, self discipline and confidence
  - families can train together

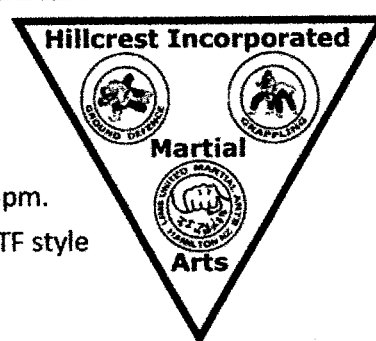
**Training** – Tuesdays and Thursdays, 5:45pm to 7:00pm

**Venue** - Hamilton Car Club Community Centre, 116 Vaile Rd (off Ruakura Rd).

**Fees** - Students \$35/month, Non Students \$40/month, discount for families.

- First 2 lessons are free

**Contact Greg (NZMAI) on 027 477 6367 or email [HIMA@xtra.co.nz](mailto:HIMA@xtra.co.nz)**



## HALL UPDATE

# ANZAC DAY SERVICE

**FRIDAY 25<sup>TH</sup> APRIL AT THE HALL 10AM.**

Stay for a cuppa and a chat after the service. Please bring a plate. Looking forward to seeing you all there.

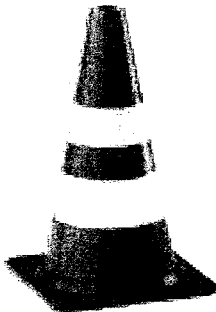
For bookings please email [eurekahallwaikato@gmail.com](mailto:eurekahallwaikato@gmail.com)

	Residents	Non-Residents
Hall per day	\$50	\$100
Social Function	\$100- \$300	\$250 - \$500
Childrens party	\$30	\$75
	\$400 Secretary's Discretion	\$500 to \$1000 Secretary's Discretion

## EUREKA EXPRESS ADVERTISING RATES 2025

For all articles, advertisements, photos, ideas and suggestions, please use the express email address. The Express is printed February – November each year. All articles should be sent to the editor by the 20<sup>th</sup> of each month. [editor@eurekaexpress.co.nz](mailto:editor@eurekaexpress.co.nz)

Classified adverts free		
Small business x 10 insertions	\$10 per month	\$100 per year
Third of a page x 10 insertions	\$15 per month	\$150 per year
Half page x 10 insertions	\$20 per month	\$200 per year



You will have all noticed the lovely orange cones and 50km signs that are adorning the intersection of Eureka Road and SH26. It is supposed to be because Eureka Road is a detour for the road works at telephone road railway intersection. More traffic is expected to go down Eureka Road as a result. While it was pointed out to LTSA that the traffic is about the same – they haven't removed the cones.





## Gardening Tips

### Autumn Activities:

Harvesting is one of the most pleasurable things to do- picking something that you have grown from scratch is so rewarding.

As we enter autumn, here are some tips for getting the best out of the season.

*Clear the decks-* some crops will have done their dash by now. For example, sweet corn will be finished, so rather than leaving it in the ground haul it out and plant something else in that spot. Chop up the stems and add them to your compost or run them over with the lawnmower so you can use them for mulch.

*Replenish, refresh and reboot the ground-* Soil prep is vital- and it always pays dividends. Before planting anything new, dig over the ground. Work in lots of compost, worm castings or sheep pellets. Adding goodness to the ground before new plants go in gives the next crops the best chance of flourishing.

*Water wisely and save any rain-* water is a precious resource and we need to conserve any way we can. Remember water only where plants are and water the ground not the foliage of the plant – moisture is taken up by the plants roots, not the stems.

*Save Seed* -Saving seed is nothing new: select good, healthy produce to dry and remove the seeds from. Save seeds from tomatoes, zucchinis, chillies, capsicum, sweet corn and beans this month. Leave a few carrots to go to seed, along with parsley, lettuce, coriander and other flowering edibles. Pick the mature heads and hang them upside down with a paper bag over the seed head – over time seeds will dry and fall into the bag.

*Plant ahead* -Keep planting and sowing edible seeds now. Think leafy greens celery, Kale, beetroot and salad greens.

*Crop care-* Stay ahead of hungry caterpillars. The trick with white butterflies is not to let them land. It cannot lay eggs if they can't land on anything. The best way to prevent them from landing is to cover your crops – netting your brassica beds is the ideal solution.



# Ladies a Plate

## Black Magic Cake

2 cups sugar	2 eggs
2 3/4 cup Flour	3/4 cup cocoa
1 cup Buttermilk(1 cup milk I tbsp vinegar)	
1 cup strong black coffee	2 tsp baking soda
1/2 vegetable oil	1 tsp baking powder
1 tsp vanilla essence	1 tsp salt

Heat oven to 180

Grease and flour two 9 inch (23cm) round baking pans or 13 x 9 x2 (33x23) square cake tin

Stir together sugar, flour, cocoa, baking soda, baking powder and salt in to a large bowl. Add eggs, buttermilk, coffee, oil and vanilla: beat on medium speed of mixer for 2 minutes (batter will be thin) Pour batter evenly into prepared pans.

Bake 30-35 minutes for round pans, 35-40 minutes for rectangular pan or until toothpick inserted in centre comes out clean. Cool 10 minutes; remove from pans to wire racks. Cool completely.

## Sinful Chocolate Icing

Juice of orange	1/2 soft butter
1 cup icing sugar	2/3cup cocoa

Whizz few seconds

Add

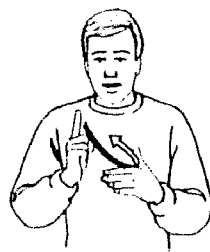
1tsp vanilla essence	1-2 tbsp milk
1-2tbsp hot coffee	



Blend Till smooth



Easter



Easter, egg



chocolate



1



2

hot  
chocolate

Aranga



1

rabbit



2

Aranga, héki



Jesus

tiakarete



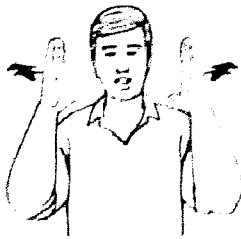
cross

tiakarete wera



church

rāpeti



church

Ihu Karaiti



avocado

ripeka



corn



whare karakja



corn



whate karakia



cut hay

kōngo



cold, winter

kānga

topohl he/

ngahuru

makariri, hōtoke

*Team Masters.*

## The end of an era

While many have been predicting it for a while, America's slow downfall comes as a hard shock to most of the world. In its wake, we must consider one thing: can I still check my email? Most of the tech industry resides in the states, and while some companies are very clearly not aligned with the current administration - notably Alphabet (Google/Gmail) - others, such as Meta (Facebook/Instagram/Messenger/Whatsapp), X (ie. twitter) and Amazon, have been all too eager to kowtow to the powers that be. What does that mean for the average consumer? Are you safe using those services? And if America descends into chaos, what does that mean for your cat pictures? Are there alternatives?

Well, it's the internet, so there are always alternatives. While there may be few people willing to switch away entirely from Windows and Mac, Linux is ownerless and maintained by an international community, as are other open-source projects such as Firefox (a web browser), Thunderbird (an email client) and LibreOffice (a Microsoft Office equivalent). In terms of twitter, Bluesky (made by one of the original twitter founders) has picked up traction and is in my view a far more enjoyable experience than the renamed 'X'. There is unfortunately no reasonable alternative to Facebook, but with all the fake AI stuff on their nowadays you're better off without it to be honest. NZ's 'Neighbourly' isn't too bad for similar community stuff, though it's dead. Messenger/Whatsapp are easily replaced with Signal (made by the original Whatsapp founder).

Google search is generally a safe harbour - for the moment at least - but it's search results are deteriorating, with more AI rubbish frontloaded, and an increasing number of ads. Ecosia, Frontpage and DuckDuckGo are reasonable alternatives that're less annoying. Google's Gmail is only one of the myriad free email services on the net. Protonmail has been on my purview for a while now, though their free account has quite a small capacity limit - fine if you're downloading your messages and deleting them off the server (POP email), not so fine if you're viewing them online i.e.. via IMAP. But there are others. Google Drive is easily replaced by NZ's own Mega.nz. Formerly owned by USA-born pro-piracy dirtbag and human whale lookalike Kim Dotcom, his shares in the service were transferred to the NZ government when he was arrested. It is currently the fastest, most flexible and most secure of the cloud storage systems. But above the free 25GB tier it is not always the least expensive. Asides from that, there're tons of non-US-centric services to switch to for whatever you do. You're still tied to the USA for your phone, and there's few ways around that aside from buying a Nokia. But otherwise, where there's a will, there's a way. Personally, having friends and family in the states I'm not entirely comfortable with deriding it, but at the end of the day you need to call a spade a spade, and bury that dead bald eagle. And in the words of Leonard Cohen, "you're not going to like what comes after America".

Too tied to the states. Contact Matt at 0211348576 or [info@homepcsupport.co.nz](mailto:info@homepcsupport.co.nz)  
\$80 per hour, or \$70 for drop-off-to-workshop services.



**Bentley Home PC Support**

## **SNIPPETS**

The Eureka Express and Hall Committees were very sad last week to hear that Barry Mayall had passed away in Cambridge. Barry worked tirelessly for many years as a member of various committees in Eureka and was a loyal friend to many. Our thoughts are with Gail and family. We will publish a farewell to Barry in the next issue of the Express.

### **FAREWELL**

As you can see by the Editorial, we say a fond farewell to Lynne and Graeme Brewer. After 52 years Lynne & Graeme have sold their farm on Tauwhare Road and have moved into their newly built home in Morrinsville. Their two children Janean & Darren both went to the Eureka school in those early days - both married giving Graeme & Lynne four grandchildren. Lynne has been an Express delivery lady for many years & we thank her for her help. She and Graeme have been involved in many community events over the years.

We wish you both all the best in your retirement & maybe now you will be able to have more time to travel & enjoy the things that are dear to you.

### **DONATIONS ACCEPTED**

We are all aware that the cost of everything is going up all the time. The printing of the Express is also costing more. If you would like to make a small donation, we would be very grateful. We will send you a receipt (which is not tax deductible as we are not registered as a Charitable Trust), for your donation so please put your name as a reference. Our bank account number is 03-1559-0042660-00. The name of the account is Eureka Express. We would also like to thank everyone who puts their loose change in the box at the Gull Station, all donations are gratefully received and help towards the rising costs. A huge thank you for the donations we have received.

### **JUSTICE OF THE PEACE FOR EUREKA**

Kevin Deane is our local JP. He is located in Eureka.

Please call or text to arrange an appointment - ph: 021 970902

### **SHAVE FOR A CURE**

Leo Rogers, from Hunter Road, is taking part in a Shave for a Cure at Silverdale Normal School, on Friday 11 April 2025.

Eight Kiwi – adults and children – are diagnosed with blood cancer each day in New Zealand.

The funds raised by “Silverdale Shavers” Shave for a Cure will go toward the Leukaemia & Blood Cancer Foundation's work in patient support and advocacy, information and raising awareness and investing in life-saving cancer research.

If you would like to donate please go to <https://www.shaveforacure.co.nz/leo-rogers>

On Wednesday, March 19, 2025, Barry Mayall, longtime resident of Eureka and friend to many in Eureka and surrounding districts, passed away peacefully at Te Awa Lifecare, Cambridge, aged 87 years

Our thoughts and heartfelt sympathy are extended to Gail, Shelley, Philip and Joelean, and Katrina, and grand children George and Lachlan, Cameron, Renee, Ashleigh and Shaun, Noah and Luca. Barry was the loved brother and brother-in-law of Bryan (deceased) and Joan, Graham and Elizabeth, and Margaret and Eric (deceased).

## TAUWHARE INDOOR BOWLS NEWSLETTER

Welcome to the March 2025 newsletter for the Tauwhare Indoor Bowling Club.

This will be the last newsletter from the Tauwhare bowling club.

The club had been in existence for a number of years but due to the lack of members, we have made the unfortunate decision to close. It is no longer viable for the club to continue with so few members. It was not a decision that was made lightly. Those that are wanting to continue playing bowls have been made welcome to join the Matangi club if they wish to. There were nine members from the Tauwhare club that went to Matangi on Tuesday.

It is hoping that the members, if not wanting to join Matangi will join another club so they can continue playing.

The results from the two club nights that we had are as follows: -

06.03.25 Winner – John Neal and Trudy Pocock

13.03.25 Winner – John Neal, Glenda Goodare and Trudy Pocock

If you would like any information about bowls, please contact: -

Bev Meads 021 172 7822

Lockie Verner 027 476 9568

Ang Jones (Matangi Club) 027 323 3796

## SCULPTURE PARK

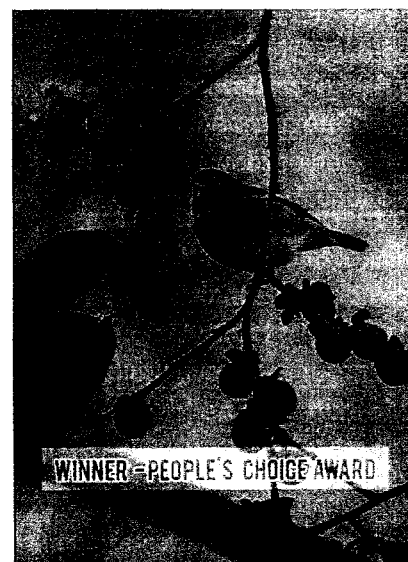
### Fleeting Moments of Autumn Photography competition starts soon

We invite all visitors to the park during the period **19th April -18th May 2025** to get their cameras out to capture images of the brief time when trees turn colour and the creative opportunities abound. Whether you glimpse an opportunity to take a photo that portrays the season or want to take a step further and make an installation with natural materials, we encourage your participation in this competition.

The opportunity to engage with nature to make temporary art is available all year around here at the park but autumn provides more diverse natural materials to spark imaginations. Just like famous ephemeral artists Andy Goldsworthy and Richard Schilling, you can gather all sorts of natural materials to assemble your ideas: leaves, pods, twigs, flax string, flower petals, fruit, and pebbles—all of which can make extraordinary installations to photograph on the ground, hanging from trees, or floating on water. We now encourage a little scavenging here to collect materials and get creative with them. We can't wait to see what you come up with!

We have great prizes for all categories/age groups! See below the 2024 People's Choice winning photo.

Please see: <https://www.sculpturepark.co.nz/events> for more detail and the entry form.



## AGM REPORT

The Express AGM was held on Monday 17<sup>th</sup> March at 7.30pm. It was a very disappointing turn out, with only 6 people attending, all current committee members. There was no one to take over the role as editor or secretary, which we urgently need. There is only 1 year left on the lease of the printer, and it will need to be decided if the express is to continue past July next year. The Express is growing, and we are one of the very few small towns to still have a local paper. A paper which has been going for 45 years. Please consider giving some of your time to help keep it going. It does not take a lot of your time. As they say – many hands make light work.



## Pukeko Preschool Newsletter March 2025

This month at Pūkeko Country Preschool, we had our annual Colour Run in celebration of Holi - Holi is a Hindu Festival celebrated in the spring, that involves throwing coloured powder and water on each other. It's also known as the festival of colors. We enjoyed a whānau picnic, followed by a fun run through some obstacles, and finished off with a waterslide. It was so much fun to see everyone get involved.



We had Firefighter Michelle come in and teach us about how to keep ourselves safe in the event of a fire - the tamariki loved trying on her gear.



We have also been working on getting our garden up and running again. The tamariki have planted some seedlings and we have begun an experiment growing beans in cotton wool and a zip-lock bag. It is exciting to check on these each day and watch them grow.

We are officially full! If you are looking for care for your child over the next year, please email [admin@pukekopreschool.or.nz](mailto:admin@pukekopreschool.or.nz) and ask about getting onto our waitlist.



Ngā mihi,  
Shell Proebstel  
*Curriculum Provider and  
Educational Lead*  
Pūkeko Country

07 824 086



Preschool



RESPECT - RESILIENCE - RESPONSIBILITY

# TAUWHARE SCHOOL

Term 1 – FEBRUARY 2025

[WWW.TAUWHARE.SCHOOL.NZ](http://WWW.TAUWHARE.SCHOOL.NZ)

## TOP NEWS

### Senior Leadership 2025

Senior students of Tauwhare worked very hard on their letters of application for the senior leadership roles. There carefully crafted words expressed their desire to be a leader as well as their ideas for what they believe will have a great impact on the learning and lives of Tauwhare kids. Congratulations to our Senior Ambassadors: Josh, Harper, Dinah, Beau, Summer, Taize, Anika Rory. Congratulations to our Principal Assistants: Edyn-Rose, Cohen. Kane, Indie, Cooper.

### 2025 Tauwhare House Leaders

Congratulations to the leaders of: Kakapo, Tui, Takahe and Kiwi.

Tristian, Ollie, Blake, Lily and Zaharah.



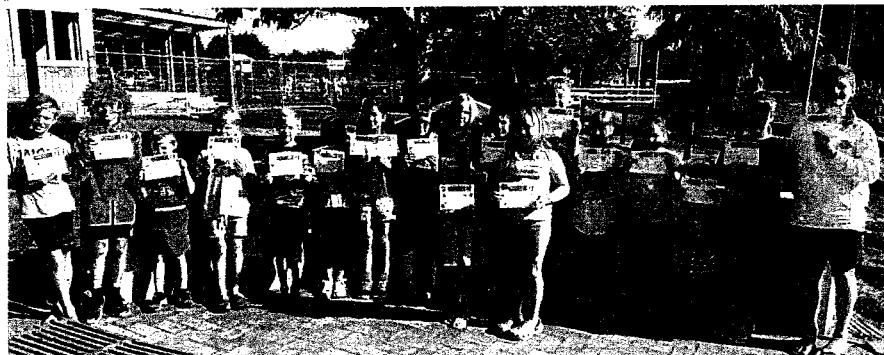
### Indoor Outdoor Flow

Rooms One to Three had a makeover this term with the addition of sliding doors onto the front deck area. Increased access to the outside space is already proving a hit with students as it seems like their classroom has gotten bigger. "We have more space to get through and be outside as well as inside in the same block," reports Beau (Year 6). Classrooms can flow inside and outside for learning, play and eating and it makes for collaboration between classes a lot easier.



### Save Your Scrap Metal

Save your scrap metal for the PTA fundraiser. The drop off days (mid-April, and in term 2) and drop off location will be announced shortly.





# Tamahere-Woodlands Councillors' update March 2025

## Consultation on Long Term Plan, Waters CCO

Consultation opens shortly on Waikato District Council's Long Term Plan and proposal for a Waters CCO with Hamilton City.

The draft plan sets out our district vision, priorities, and how we'll fund and deliver services and projects that matter most to our communities over the next nine years until 2034. It will be published on the Council's website for your feedback from **11 April to 11 May**. Drop-in sessions will be run for those interested to discuss the plan with staff.

It is based on a general rate increase of 4.25% for the first year (2025/26), before falling to an increase of 3.05% in 2026/27, then 2.7%, and between 2.5% and 4.5% in subsequent years. (These rates exclude public transport costs which will be rated directly by the Waikato Regional Council from 2025/26.)

There will be options to consider as affordability is still a concern, with overall rates (general and targeted rates together) in our townships likely to rise between 7.8% and 10.8% in the first year, compared with about 6.2% in country living areas and 4.2% in rural areas, where properties are not subject to significant targeted rates. (A waters CCO will eventually bring relief to those on targeted waters rates, but it will take 5-10 years to realise the full benefits.) For more information and to have your say from 11 April to 11 May, go to the Council website here: [www.waikatodistrict.govt.nz/say-it](http://www.waikatodistrict.govt.nz/say-it).

## Waters CCO

As part of this Long Term Plan we're also seeking your feedback on a new model for managing water services. This involves creating a Council-Controlled Organisation (CCO), a business to be jointly owned by Waikato District Council and Hamilton City, but with opportunities for other councils to join the CCO in the future. The reason for a CCO is to gain economies of scale that will, over time, help control the rising costs of treating and managing our drinking water and wastewater.

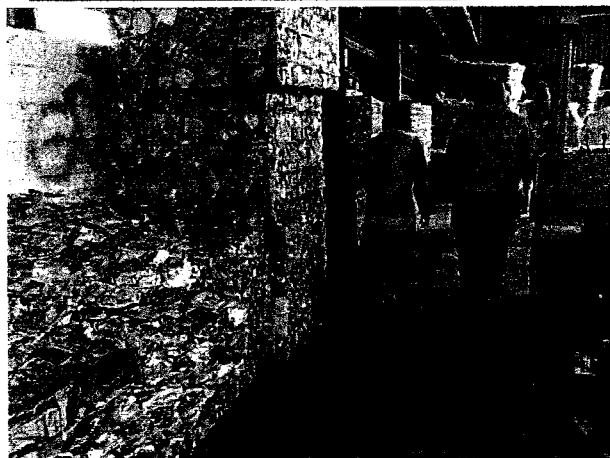
The CCO would be governed by an independent Board of Directors, chosen for their expertise in areas like finance, infrastructure, legal matters, and more. They would be appointed by a Shareholders' Forum that would include representatives from Hamilton City, Waikato District, and Waikato-Tainui. Ownership of the Council's waters assets would be transferred to the CCO, but could not be privatised. Read more about "Local Water Done Well" on the Council website here: [www.waikatodistrict.govt.nz/water](http://www.waikatodistrict.govt.nz/water).

## Waste management consultation

The Council's Waste Minimisation and Management Plan (WMMP) is also up for review and for consultation in the next month. This plan establishes how best to manage our waste services, to increase recycling and reduce waste to landfill. This includes everything from your weekly rubbish and recycling collection to funding for community initiatives. As a result of the current plan, the Council is proposing changes to our waste services, which will be consulted on as part of our upcoming Long Term Plan. For more info on the WMMP consultation go to: [www.waikatodistrict.govt.nz/say-it](http://www.waikatodistrict.govt.nz/say-it).

## Make waste management fun and meaningful

- **Furniture restoration repair café** – at St Stephen's Tamahere, 14 Tamahere Dr, Saturday 29 March 11am-4pm. Learn how to repair your own wooden furniture with the help of a specialist. Tickets are \$5 each and bookings essential. Find this event and book your place at [www.waikatodistrict.govt.nz/events](http://www.waikatodistrict.govt.nz/events).
- **Tour the Green Gorilla Recycling Centre** – at 137a Rotowaro Rd, Huntly, Saturday 5 April. Book a slot between 9am-1pm. Green Gorilla is our rubbish and recycling contractor for much of our district including the Tamahere-Woodlands ward that runs from Tamahere to Gordonton. Learn about our recycling services and how you can help. Bring the family for interactive demonstrations, face painting and a 20-minute tour of the plant at 137a Rotowaro Rd, Huntly on 5 April. Find this event and book your tour at [www.waikatodistrict.govt.nz/events](http://www.waikatodistrict.govt.nz/events).



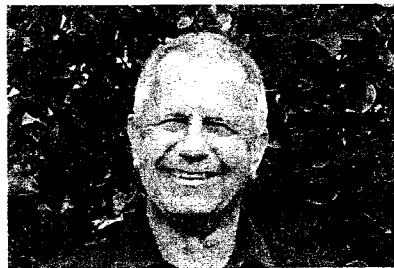
### Apply for funding for your waste minimisation project now!

Our waste minimisation fund supports projects costing up to \$10,000 that involve and help educate the Waikato district community about reducing waste to landfill. Standard funding ranges from \$1,000-\$5,000, and special projects \$5,000-\$10,000. The Tamahere furniture restoration repair café is an example of a project supported by the fund. Projects funded may include educational programmes, events and workshops, feasibility studies, R&D to find alternatives for waste disposal, and social enterprise start-ups that use waste as a resource. Applications close on Friday 18 April. Go to [www.waikatodistrict.govt.nz/funding](http://www.waikatodistrict.govt.nz/funding).

### ANZAC Day services in Tamahere-Woodlands ward

Come to a local ANZAC Day service on 25 April in Waikato district. Services in our district are expected to include a dawn service at the Gordonton cenotaph, 1024 Gordonton Rd, and a 10am service at the Eureka cenotaph, cnr of Hunter Rd and SH 26. Watch out for confirmation of final details for this year's services on the District Council's events page [www.waikatodistrict.govt.nz/events](http://www.waikatodistrict.govt.nz/events) - or just google 'ANZAC Day services Waikato District' for info before the day.

### Contact your Tamahere-Woodlands Councillors:



Crystal Beavis, mob 0275 957 927, email [crystal.beavis@waidec.govt.nz](mailto:crystal.beavis@waidec.govt.nz)

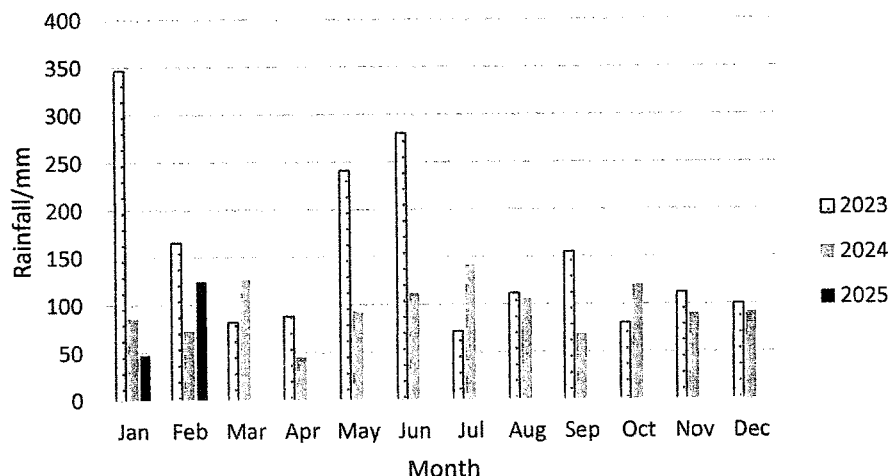
Mike Keir, mob 027 449 3012, email [mike.keir@waidec.govt.nz](mailto:mike.keir@waidec.govt.nz)



## Weather

February	2025	2024
Rainfall total	125mm	73 mm
Rain Total for year	172.5 mm	159 mm
Rainy days	4	7
Most daily rainfall	70mm	27 mm
Highest wind speed	37.1 km/hr	58 km/hr
Temp high	30.7°C	28.8°C
Temp low	8.3°C	7.6°C

## Rainfall



## LAWNMOWING & GARDENING SERVICES

Professional lawn and garden -care services



**Alex & Sharyn Macdonald**

For free no-obligation quote:

Phone 027 479 7282

or 027 308 6781

E::macdonaldmowing@gmail.com

Www.lawnandgradenservices.co.nz

Residential—Rural—Commercial

Spraying—Fertilizing—Weeding

## HAIRFIELDS

HAIR DESIGN

95 HOOPER ROAD

Sharon Laurent

Full salon facility in Eureka

Total hair care professional

and many years experience

Agent for Nutrimetics

Open Tuesday to Thursday

Late nights Tues/Thurs

Tel. 027 280 5978



**Servicing and installation**

**on all types of pumps**

**Full water treatment**

**service available**

**DAREN ROSS**

**Ph: 8241726**

**Or 0274 346 571**

**Email:**

**admin@rosspumps.co.nz**

## Morrinsville Professional Carpet Cleaning



**Carpets and rugs**

**Lounge suites**

**Flood recovery**

**Latest equipment**

**Very best chemicals**

**Call David 02 777 200 30**



- Gutters vacuum cleaned
- Moss, lichen and mould treatments to roofs, driveways and paths
- Soft wash to houses soffits and fences
- Water blasting and drain unblocking
- Green gunge gone!

**Call David 02 777 200 30**



**Edie Swney**

**Senior Consultant/Owner**

**Cruising specialist and all aspects of travel**

**Phone 021 734 4140**

**Email**

**edie@thetravelbrokers.co.nz**



**A higher standard**



**Easystake ,  
Your garden plant support**



**Easystake: easy to use, easy to place, easy to move.  
galvanized steel construction  
for long life**

**Bloom Stand: displays  
your pots of colour,  
position for maximum  
impact,  
galvanized steel and  
available in two heights**



**Easystake by Machus**



**Easystake.co.nz**

**Simon Mobile 02108063432**



161 Morrinsville Road, Hamilton, 3286

Phone: 07 856 4522 Email enquiries@newsteadvets.co.nz

Website: www.newsteadvets.co.nz

Newstead Vets offer a full range of veterinary services for small animals including:

- \* Consultations (by appointment only)
- \* Soft Tissue and Orthopaedic Surgery
- \* Digital Radiography and Ultrasonography
- \* NZVA Microchipping Accredited Practice
- \* Nutrition and product Advice
- \* Rural location with ample parking
- \* Referral to Specialists
- \* PennHIP Certified
- \* Full Laboratory Service
- \* Hospitalisation
- \* Cremation Service
- \* Convenient Online Shop

# G&M FENCING

## WAIKATO WIDE

For all your rural, lifestyle and residential fencing needs

Contact Mitch

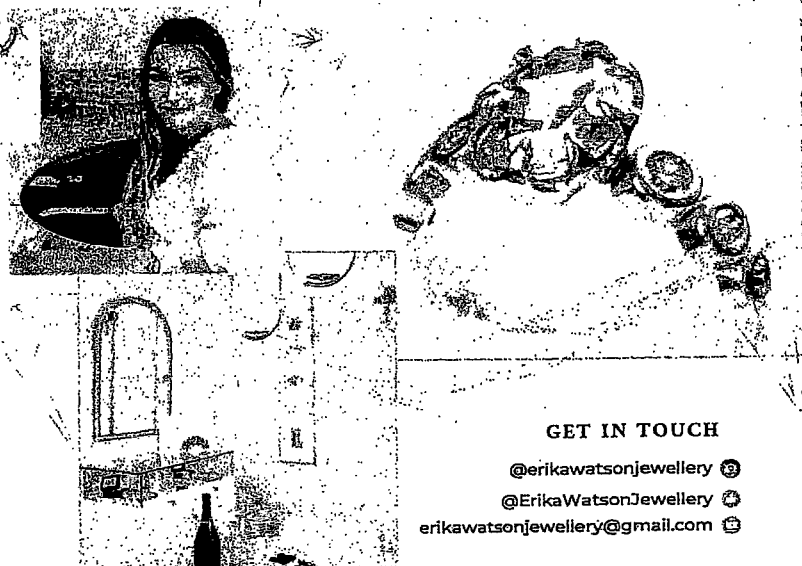
0278418055

gandmfencingnz@gmail.com

### Local Boutique Jeweller

DESIGN | MANUFACTURE | SHOWROOM

- Showroom by appointment only
- Private personal shopping experience
- Repairs and maintenance
- Custom design & manufacturing
- Remodelling old or unworn jewellery
- Unique, one-of-a-kind designs & small collection jewellery
- Independent insurance valuation services
- Wine and cheese shopping experience for small groups

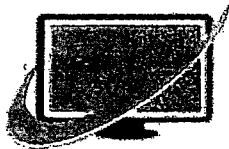


GET IN TOUCH

@erikawatsonjewellery

@ErikaWatsonJewellery

erikawatsonjewellery@gmail.com



# CTAS

100% NZ Owned and Operated

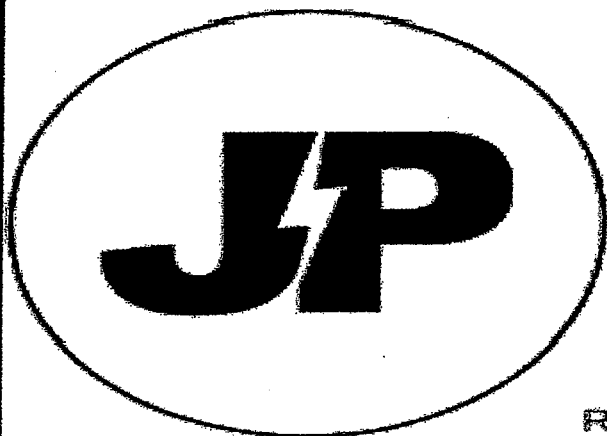
- TXT and Email Alerts and Reminders
- TXT Shortcodes for your business or club
- Flight Status by TXting your Flight to 8808
- Live Video and Audio Streaming on the Internet



Reminders by TXT and Email

## YOUTXT™

[www.ctas.nz](http://www.ctas.nz) | [sales@ctas.nz](mailto:sales@ctas.nz) | [www.youtxt.nz](http://www.youtxt.nz)



**JP ELECTRICS**

EST 2022

## JAMES PALMER

REGISTERED ELECTRICIAN

⚡ 027 756 6804

⚡ [james@jpelectrics.nz](mailto:james@jpelectrics.nz)

⚡ [www.jpelectrics.nz](http://www.jpelectrics.nz)

Residential | Commercial | Heat Pumps



QUALITY ASSURED  
MASTER  
ELECTRICIAN

## COMPUTERISED BULK SPREADERS LTD

Cartage and Spreading

### FERTILISER, LINE, UREA SPECIALIST

Competitive Rates

**PETER JONES**

**027 496 3370**



**\*37 years service in the Morrinsville district \***

## Dig It Earthworks

### EARTHMOVING & EXCAVATION

- House Pad & Driveway Prep
- Driveways
- Section clearing
- Footings & Post Hole Boring
- Landscaping & Lawns
- Farm Maintenance & Races
- Truck & Labour Hire
- Calf/Goat/Pig/Chicken Shed Clearing

### CONCRETE LAYING

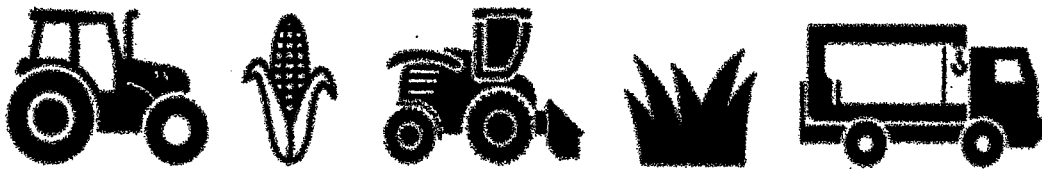
- House & Garage Pads
- Driveways
- Sheds/Workshops
- Patios
- Footpaths



***Give Liam a call today for a free quote on 021 02839174***



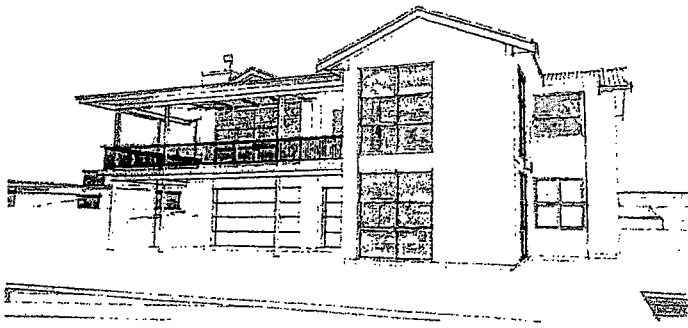
Jackson Contracting



Ag Contracting - Maize & Grass Silage - Hiab & Bulk Haulage

**07 887 6688**

**www.JCLAG.co.nz**



## Billings Builders Ltd

Licensed Building Practitioner

New housing

Additions & alterations

Dairy sheds

Farm buildings

Contact: Elliot 0275 766 599

Ivan 0274 941 961

167 Hunter Road, Eureka

[ivanb.eureka@outlook.co.nz](mailto:ivanb.eureka@outlook.co.nz)



# LOCAL RURAL AGENT SERVICING YOUR LOCAL AREA



*Kevin* **DEANE**

M 021 970 902

**Harcourts** Kevin Deane Real Estate  
Licensed Agent REAA 2008



# **GULL EUREKA**

**PETROL – DIESEL – LPG – OILS & LUBRICANTS**

**FARM SUPPLIES – GROCERY ITEMS**

**SHOP HOURS: MONDAY TO FRIDAY 730:AM – 600:PM**

**FUEL 24 X 7 PETROL & DIESEL FROM OPT (OUTDOOR PAYMENT TERMINAL)**

**EFTPOS – RD1 FARM SOURCE – FARMLANDS – CARDLINK- AMEX –  
MASTERCARD- VISA**

**FOLLOW US ON FACEBOOK FOR DISCOUNT DAYS AND PROMOTIONAL INFORMATION**

**Gull Eureka  
1291 Morrinsville Road  
R.D.6  
HAMILTON  
Tel: 07 824 1773**

## **Walling** **CONTRACTING LTD**



**For all your:**

- . Ground Cultivation**
- . Planting**
- . Re-Grassing**
- . Under Sowing**
- . Grass Silage**
- . Maize Silage**
- . Digger & Spray**
- Requirements**

**Phone Zach: 027 450 0125**

**EMAIL: [walling.contracting.ltd@gmail.com](mailto:walling.contracting.ltd@gmail.com)**



# **EMERGENCY EVACUATION PLAN**

**Use these tips to get  
prepared:**

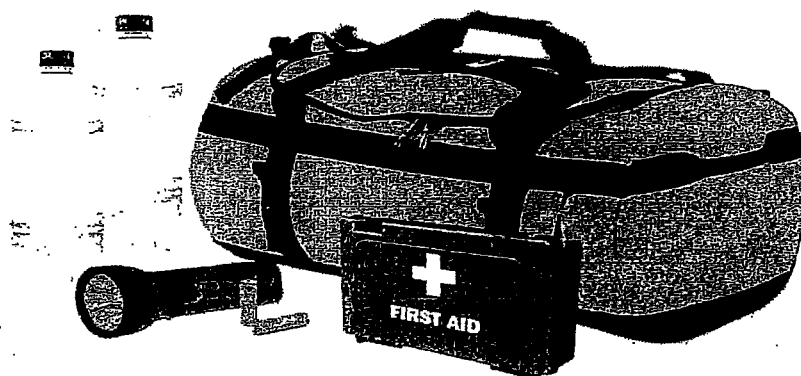
**Gather supplies such as food,  
Water, clothing, medications,  
batteries and chargers to assemble a  
disaster kit.**

**Help your neighbours**

**Share supplies**

**Make and keep a list of all emergency contacts. Make sure  
all of the family can access these. Save them in your phone**

**Keep neighbours, friends and family informed of your  
whereabouts.**





## Local Company based at Eureka

Our sheds are all certified NZ made so by purchasing from us you are supporting more than one New Zealand Business



Lifestyle  
Rural  
Industrial  
Habitable  
Sleepout



## Waikato Shed Company

218 Hunter Road

Eureka

07 824 1045

[Enquiries@waikatosheds.co.nz](mailto:Enquiries@waikatosheds.co.nz)

[www.waikatosheds.co.nz](http://www.waikatosheds.co.nz)

# WAIKATO SHED C O M P A N Y ✓✓

## great sheds, done right!

### 4-Bay Shed with Bathroom & Dedicated Boat/Caravan Bay Built for Lifestyle & Storage



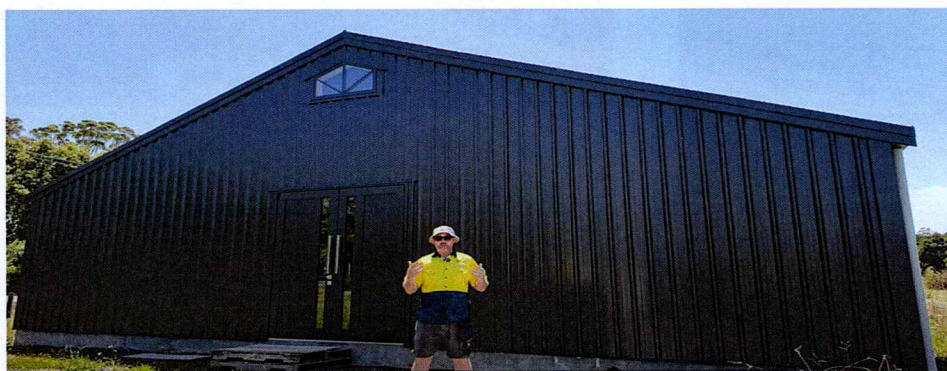
Our expert teams have been working on **something special**. This shed is the **ultimate solution** for someone looking to get on the land prior to building

**Clearspan Monopitch Shed 10m Span x 16m Long x 3.5m High.** A Sleek design **T-Rib 0.40 Flaxpod Maxx Cladding**, with a **5 Deg Roof**, **Double Glazed Windows & Ranch Sliders**, two **roller doors**, and three **skylights**



Located above the Firth of Thames, this exceptional shed features an **open fourth bay**, perfect for **boat storage**. It's **versatile design/layout** also offers an ideal solution for those seeking space to store their **campervans or caravans**

### A Simple Blend of Shed Design - Auckland's Unique Church Hall Building



It looks like another shed in a rural setting but it is much more than that for this church's community who wanted somewhere they can hold events, parties & family gatherings. Inside is a nice bright open plan space with a kitchen, bathroom and storage space

A **Stylish Gable Shed** featuring double—glazed windows and PA Doors. The impressive Large front doors, paired with an American barn-style window, add a distinctive charm and Character.

Watch the journey on our YouTube Channel





## Local Company based at Eureka

Our sheds are all  
certified NZ made so by  
purchasing from us you  
are supporting more  
than one New Zealand  
Business

Lifestyle  
Rural  
Industrial  
Habitable  
Sleepout



### No Bull Sheds

218 Hunter Road  
Eureka

07 824 1045

[Enquiries@nobullsheds.co.nz](mailto:Enquiries@nobullsheds.co.nz)

[www.nobullsheds.co.nz](http://www.nobullsheds.co.nz)

### Tahuna School Court Cover & Grand Opening



Two weeks ago we had the honor of attending the grand opening of the Tahuna School Court Cover, a project our team has been proud to bring to life. Using cutting-edge Box Beam technology, we spanned the entire 700 sqm court, ensuring the kids can play comfortably rain or shine

### Engaging with Our Community

Bronek, Glenn and Thomas had a blast out at the Morrinsville Motorama this year. From Classic cars and Huge trucks to the smallest caravans we've ever seen. There is something for everyone to enjoy.



Watch the journey on our YouTube Channel

