

Eureka Express

Vol XLVI No. 1 Circ 300

www.eurekaexpress.co.nz

FEBRUARY 2025

editor@eurekaexpress.co.nz



WAIKATO SHED
C O M P A N Y ✓✓
great sheds, done right!


NO BULL
SHEDS®

Brian and Sheryll Gordon
51 YEARS ON WAVERLEY ROAD, EUREKA

We were 50% Share milking in Tauwhare and moved to 181 Waverley Rd 1 June 1973. Sheryll's parents, Claude and Dulcie Buckley had purchased 134Ha from Maber Lands (Laurie and Yvonne Maber) with the plan to settle Kevin (Sheryll's brother) and Lin, and us on an economic, for the day dairy farm.? Claude and Dulcie retained 20 ha along Seddon Road as a retirement block, later to be pioneers in blueberry farming.

1973 was a busy year. We had one cowshed for two farms. So we shared the shed for the first 18 months, milking early or late on the 10 day Dairy Company Docket cycle. Scott Buckley was born in August and Karla Gordon born in November of 1973.

Our cows came from developed land in Tauwhare to semi/quite undeveloped peat. There were drains everywhere and very limited developed races. We were very excited at the opportunity at 24years old, on building a foundation for our long term future. We soon learned how to successfully pull a cow out of a drain! Our first year's accounts read as follows:

1973-74	Gross Farm income	\$22727
	Farm Expenditure	16676
	Nett Profit	\$4064

Milk Price \$1.35 milkfat (as it was then)

The area across the railway line at Road was a no-mans land. It was Gordonton, 14 km away, Puketaha 10km away or Eureka 5 km away. We are still referred to as Gordonton on Google maps! It was easy to make that decision to make 'Eureka' home. The school of course was our nearest primary school. The Buckley and Gordon kids car pooled with no buses for our area at the time. There were many young families in the district at this time to share social and family time with. Government policy at the time was to encourage younger farmers into the industry. Very similar to now where our generation needs a succession plan to bring young enthusiastic farmers into a great industry.

There were wonderful memories of our three children at Eureka school, a small rural school. Brett was born in 1977. The roads were all gravel then but the kids biked to school. Eureka Motors owned by Joe and Noeline Stockman , Colin was the apprentice, and the Corner Store opposite the school was still open and were a key part of Eureka.

Our land was mainly peat with Hamilton clay near the road which was great for all farm buildings and roads. The challenges of peat farming were many. Claude, Sheryll's Dad, was a very wise head to guide us in those early years as his family were peat farm pioneers on Piako Road from the 1950's.

Discussion group was a very important part of learning and social time for the area. MAF advisors Walter Tye, Ken Lewis and peter Gault were great through those early years and of course Ruakura research centre was just down the road. Many social functions evolved from the Eureka farm discussion group.

Pasture renewal programs began with earnest with drains, subdivision, and latest pastures sown. Copper, Selenium, calcium and magnesium were identified as key trace elements needed for animal health. It was the 1970's when drench guns with back packs at first, then Reid and Harrison made a suitable mini effluent pump to pump these abrasive substances which was prone to blocking. We continued drenching cows daily in Spring for many years until dosatron water systems changed this trying practice after the year 2000.

Building races, farm roads for cows and machinery was not easy. Trucks would get stuck pretty quickly on the peat so clay foundations were formed by tractor and trailer then a truck could hopefully spread the metal. Remember a 50 hp 2WD tractor was what we had in those days.

As the years passed we were able to purchase land across Waverley Road and due to very low traffic our cows just walked across the road row by row! So the development of races, drainage and subdivision continues. A stock underpass was installed under Waverley road in the 1980s. It was great to be able to buy nearby land to grow the farm to stay economic. From the original 54 Ha, the farm is now 156has, milking 450 cows (certainly not large by today's standards).

As the children left Eureka School for Berkley and Hillcrest High, we started to loose contact with the district. Our interests spread from just farming in those first 20 years to boating, travel and golf. A quite normal progression I think.

The big changes in the District are really the fact farming is now a small part of Eureka as the urban spread had happened. Roads are now all sealed and traffic volumes have greatly increased. The peat level has shrunk about 3meters over this 50 year period due to drainage and peat consolidation.

We built a new house at 145 Waverley road in 1999 and had 25 years there as we progressed to semi retirement.

We have not been active members of the Eureka community in recent years as off farm interests have grown and our family were all involved with there own farming enterprises elsewhere, as well as 10 grandchildren to follow has kept us very busy.

We moved off the farm in October 2024 to Morrinsville and I now commute to the farm regularly to any work that is still my responsibility, Leanne and Paul our eldest daughter has recently moved into our house at 145 Waverley road.

Great memories of a wonderful life in a very special place keep up the good work Eureka Express.

Brian and Sheryll Gordon

FAREWELL

As you can see by the very interesting Editorial, we bid farewell to Sheryll and Brian Gordon. On behalf of the community we would like to thank you both for all you have for Eureka over the years. Sheryll, over the last many years you have been reviewing the books for the Express committee, you always managed to fit the task into your busy life, and for that we are grateful. We now must find another person to fill your job. You will both be missed but we all wish you well in your new life, the life of retirement. No one should believe that it is time to sit and rest, most of us know that retired people are busy than ever. New life, new adventures. Good luck and hopefully we will catch up in the future.

DONATIONS ACCEPTED

We are all aware that the cost of everything is going up all the time. The printing of the Express is also costing more. If you would like to make a small donation, we would be very grateful. We will send you a receipt (which is not tax deductible as we are not registered as a Charitable Trust), for your donation so please put your name as a reference. Our bank account number is 03-1559-0042660-00. The name of the account is Eureka Express. We would also like to thank everyone who puts their loose change in the box at the Gull Station, all donations are gratefully received and help towards the rising costs. A huge thank you for the donations we have received.

The Rubber Hits the Road: Welcome Progress on SH1B Telephone Road Rail Crossing Upgrade

On behalf of its communities, the Waikato District Council is pleased to report the long-awaited upgrade to SH1B Telephone Road rail crossing begins next week. This project marks a significant milestone for our district, improving safety and restoring a key transport link for our communities. The rail crossing has been closed for nearly three years due to safety concerns, and we acknowledge the patience and resilience of residents and businesses who have adapted to the closure and detours. The upgrade will not only allow the crossing to reopen but also ensure it meets robust safety standards set by KiwiRail, significantly reducing risks for all road users. Council is particularly encouraged by the investment in safety improvements, including raising the road level, installing electronic warning signs, and creating escape lanes to prevent vehicles from being stranded on the railway line. These measures will help protect motorists and improve traffic flow in the area.

Waikato District Council Mayor Jacqui Church said she was delighted to see the project progress, a testament to collaborative agencies and services for community safety.

"I would like to thank NZ Transport Agency Waka Kotahi and KiwiRail for their commitment to delivering this much-needed project. We also appreciate the support of central government in funding infrastructure improvements that directly benefit our communities," she said.

Construction will require a temporary road closure at the intersection of Telephone Road, Holland Road, and Marshmeadow Road from 19 February until the project is completed later this year. While this may cause some short-term inconvenience, the long-term benefits of safer and more efficient transport connections will be worth the wait.

Local resident Steven Howarth said, "our life is very busy with four young kids, opening the intersection will save us precious time in the before school madness and will make the morning that little bit easier. We can't wait to have the intersection open!"

Council will continue to work closely with project partners to keep our community informed as work progresses. We encourage residents to stay updated through our website, social media channels, and official communications.

This upgrade is a testament to what can be achieved through collaboration and advocacy, and we look forward to seeing the positive impact it will have for our district.

Community Response Plan update

The Community Response Plan in its draft form has finally been sent to the council for sign off. This has been a big job, but it isn't finished yet. Once it is signed off, we need to decide where it will be stored, and who it will be distributed to. We will keep you informed as to our progress from here. If you want to know more about it, please email editor@eurekaexpress.co.nz.

TAUWHARE INDOOR BOWLS NEWSLETTER

Welcome to the first 2025 newsletter for the Tauwhare Indoor Bowling Club. It doesn't seem that long ago I was writing the final newsletter for the 2024 season!! With the temperatures we have been experiencing recently, it doesn't seem right that we are thinking about a winter sport.

As the Tauwhare bowling club has been in existence for several years it would be a shame if through the lack of members, we could be forced to fold. It is important that we try to keep the club running and I am sure it would be good for the community as well. Our membership last year was like the previous year but prior to that the numbers had been steadily declining. It would be great to see some bowlers come back that had played bowls in the past. If you are new to the area, or, never played bowls before but would like to give bowls a try then come along to the Tauwhare Hall on a Thursday evening. It would be good to have some junior bowlers also join the club. We have people within the club that will introduce you to the game and provide coaching if necessary. Thursday 6th March is our first club night. Please be at the hall at 7.15pm. We aim to have our club night finish between 9.30 and 10pm. Our aim going forward is to make bowls a fun social evening. If you would like more information please do not hesitate to contact one of the following people:-

Bev Meads	021 172 7822
Jim & Rosalie Arnold	07 887 4832
John Cottle	07 824 0992 or 027 524 0992
Lockie Verner	027 476 9568

PUKETAHA MARKET & CARBOOT SALE

Saturday 22nd March 2025

10.00 am – 2.00pm

Food, drinks, craft, books, toys, clothing, household goods, music and more

Fundraising for a community AED

To register interest in a stall site

Contact: puketahahall@gmail.com

EUREKA EXPRESS ANNUAL GENERAL MEETING

Monday 17th March at the hall at 7.30 pm.

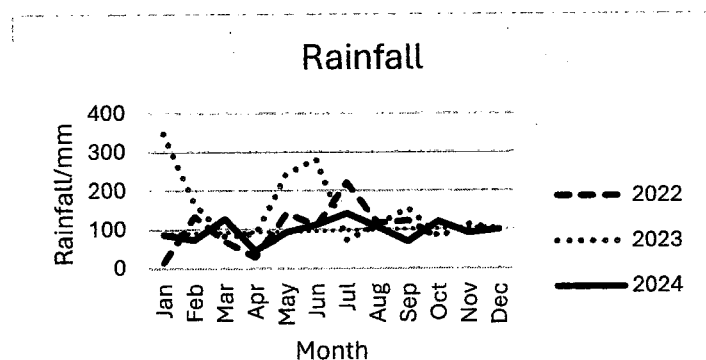
Please show your support for the paper and really give some thought about how you can help us out. We meet once a month, we print once a month. We need more members to ensure the Express keeps going in the future. Not many local towns can boast they still have a local paper still going after 45 years.

Hope to see you there.

JUSTICE OF THE PEACE FOR EUREKA

Kevin Deane is our local JP. Please call or text to arrange an appointment. Kevin Deane JP m 021 970902 , Kevin is located in Eureka.

Weather for December	2024	2023
Rainfall total	99 mm	100.5 mm
Rain Total for year	1154 mm	1839 mm
Rainy days	10	9
Most daily rainfall	21 mm	33 mm
Highest wind speed	38.5 km/hr	46.8km/hr
Temp high	28.2°C	28.4 °C
Temp low	7.3°C	8.2°C



Weather for January	2025	2024
Rainfall total	47.5mm	86mm
Rain Total for year	47.5mm	86mm
Rainy days	5	7
Most daily rainfall	22mm	40mm
Highest wind speed	45 km/hr	43.5km/hr
Temp high	27.8 °C	31.8°C
Temp low	6.7 °C	8.4°C

Sculpture Park

Two years on from the chaos of Cyclone Gabrielle, Marcus Tatton has finished making a long-lasting legacy from the timber of 100 trees that blew down.

The Portal project was one year in the planning, five weeks in the making. This land art installation now spans the width of Confer Canyon.



Take the opportunity to see this art work and the *Treasures in the Landscape* exhibition whilst this glorious summer weather lasts. Annual passes for park entry any daylight hour and joining one of the many creative workshops coming up provide more reason for your next visit to the park. See <https://www.sculpturepark.co.nz/workshop> Choices include learning how to make sculpture from aluminium or clay, trying your hand at figurative drawing, or carving with wood. See you soon.

Community Notice Board

At the last Hall Committee meeting it was discussed on how we could use the hall for more community events or clubs. An idea was to start a table tennis club one night a week. How this club would be set up is still a work in progress, however, before we could even consider moving it forward, we need some equipment. Does anyone in the community have a table tennis table and or equipment they no longer need and would like to donate it to the hall. If you do, please email the committee at eurekahallwaikato@gmail.com.

There was also a thought we could run another garage sale. So, if you would like a table to let us know. We will organise one if there is sufficient interest. The date and any other information are to be advised.

HAIRFIELDS

HAIR DESIGN

95 HOOPER ROAD Sharon Laurent

Full salon facility in Eureka Total hair care professional

and many years' experience

Agent for Nutrimetics

Open Tuesday to Thursday

Late nights Tues/Thurs

Tel. 027 280 5978

HALL UPDATE

Here we are the beginning of another year and already into February. Well by the time you read this, February will be finished, and we will be into March. The hall committee were busy over the summer break organising a very successful Square Dance night. It was so much fun and everyone who came along went home with a smile on their face and some even asked when the next one will be. It was fantastic to see the hall come alive again. The square dance group that came to join us and show us how to dance were a lot of fun and now might even hire the hall for some of their events, they were really impressed by the hall.

The film crew, presenter Tamati and the producer Mitchell plus the sound people were fun. They joined in the dance, especially Tamati and remarked on how easy we had made the event work for them. They were also impressed by the wonderful supper that was provided by everyone.

Who knows what this year will bring especially with the new committee.

Bookings are coming in quite fast this year so if you have a special occasion or event, you are planning this year, why not use the hall.

For bookings, please call Gayle 0272917150 or email eurekahallwaikato@gmail.com

	Residents	Non-Residents
Hall per day	\$50	\$100
Social Function	\$100- \$300	\$250 - \$500
Childrens party	\$30	\$75
	\$400 Secretary's Discretion	\$500 to \$1000 Secretary's Discretion

EUREKA EXPRESS ADVERTISING RATES 2025

For all articles, advertisements, photos, ideas and suggestions, please use the express email address. The Express is printed February – November each year. All articles should be sent to the editor by the 20th of each month.

editor@eurekaexpress.co.nz

Classified adverts free		
Small business x 10 insertions	\$10 per month	\$100 per year
Third of a page x 10 insertions	\$15 per month	\$150 per year
Half page x 10 insertions	\$20 per month	\$200 per year



The film crew.

Tamahere-Woodlands Councillors' update February 2025

New CEO

Waikato District Council welcomed our new CEO Craig Hobbs with a powhiri at the beginning of February. Craig's past experience includes roles as CE of South Waikato District Council and most recently director of regulatory services at Auckland Council. Other past roles include CEO of Paralympics NZ, and CEO of the National Maritime Museum. After 21 years with WDC, outgoing CEO Gavin Ion will stay on until June, leading development of a new Waters CCO (council-controlled organisation) with Hamilton City for public consultation later this year.

New roading contractors

New roading contracts for the district have been let to Fulton Hogan (in the south of the district) and Higgins (in the north) starting from July this year. Tenders were judged on value for money, flexibility, and planning/scheduling to deliver efficiency and responsiveness. The Waikato District Alliance contract with Downer finishes at the end of June.

Telephone Rd rail crossing

NZTA has begun work on a package of improvements to the rail crossing and adjacent Telephone Rd-Holland Rd intersection that will allow Telephone Rd to reopen to through traffic by the middle of this year. The road level will be raised over a distance of 90 metres and new escape lanes built to improve safety at the crossing. The crossing has previously been considered one of the most dangerous in NZ and was closed after an incident three years ago when a section of track was dislodged by a low-slung vehicle.

Long Term Plan

After three days of workshops on the Long Term Plan (LTP) 2025-34, the Council met again to adopt the draft plan for public consultation in March-April. Hearings and deliberations will be in May and the final plan adopted in June.

Subject to consultation, the draft plan is based on a general rate (GR) increase of just 4.25% for the first year (2025/26), before falling to an increase of 3.05% in 2026/27, then 2.7% and less in subsequent years. (These rates exclude public transport costs which will be rated directly by the Waikato Regional Council from 2025/26.)

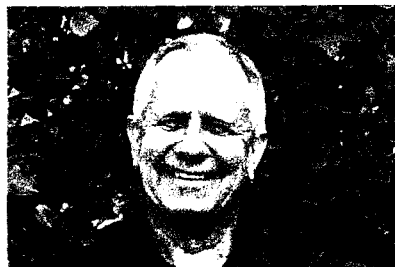
This represents hard work by staff to find savings, and comes despite early LTP budget indications last year that a 13.75% GR increase this year would be followed by several 6% annual rises, and despite the council using reserves to keep the increase to 11.9% this year (below average for councils around the country).

Nevertheless, rates affordability in our townships remains a major concern. Costs have risen 20% overall since preparation of the last LTP (2021-31), with rising compliance costs putting extra pressure on targeted rates, especially for water and wastewater services. This means overall rates (general and targeted rates together) in general residential areas could rise between 7.8% and 10.8% in the first year, compared with about 6.2% in country living areas and 4.2% in rural areas, where properties are not subject to significant targeted rates. (A waters CCO will eventually bring relief to those on targeted waters rates, but it will take 5-10 years to realise the full benefits.)

Applications open for Creative Communities Scheme

This Creative NZ-sourced fund is designed to support art activities that celebrate our unique district, with a goal to increase participation in local arts (defined as all forms of creative and interpretative expression). Applications for funding are open until 5pm, Thursday 6 March 2025. For more info go to www.waikatodistrict.govt.nz/funding

Contact your Tamahere-Woodlands Councillors:



Crystal Beavis, mob 0275 957 927, email crystal.beavis@waidec.govt.nz

Mike Keir, mob 027 449 3012, email mike.keir@waidec.govt.nz



RESPECT - RESILIENCE - RESPONSIBILITY

TAUWHARE SCHOOL

Term 1 – FEBRUARY 2025

WWW.TAUWHARE.SCHOOL.NZ

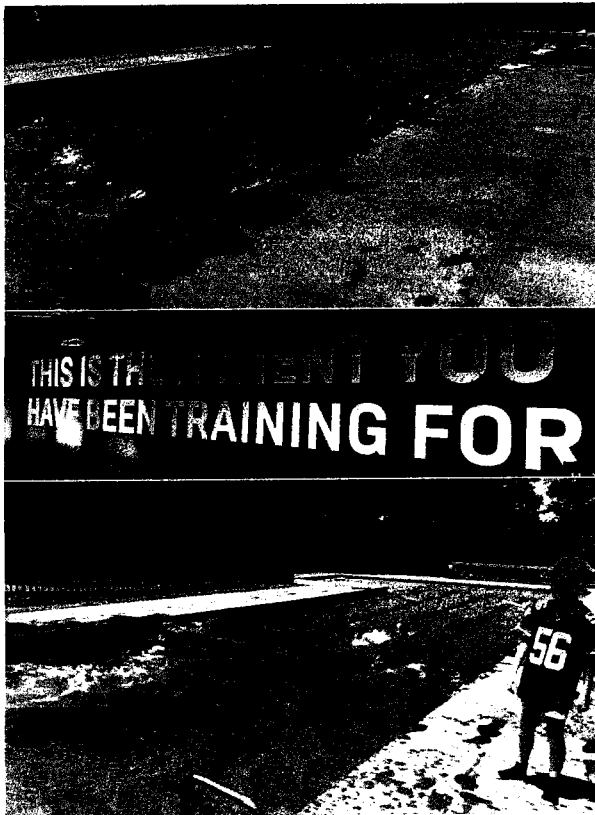
TOP NEWS

Swimming is Hot!!!

Students couldn't wait to dive into their lessons. There is no telling anyone twice in Term 1 that it's time to grab your goggles, dive in the pool, and build up those swimming skills. Swimming is not just fun—it helps us stay active, build confidence, and learn important water safety skills. We also use this learning to prepare for our Swimming Picnic Day at the Morrisville Pools. let's go!

New Library Furniture

We are so grateful for our amazing families who are part of the Preschool Group at Tauwhare School on Thursday's in Te Manawa. With their help and support, we have been able to receive some new library furniture for both the Preschool group and Tauwhare School to enjoy. Thank you so much to these incredible people, we love seeing you on Thursday's.



Enviro Schools in Action at Tauwhare

Our good friend Adrienne from Enviro Schools spent a day with us at the beginning of the year, spending time with each class individually. When we first learn how to love and enjoy nature, we then learn about what to look after and why we protect it. Children spent a lot of time in our nature forest, exploring among the trees, seeing birds and insects, and getting messy in the dirt. We love the environment we have in our school.

BELOW RIGHT: Kayson enjoying our junior playground, installed last year.





Tauwhare School

Please confirm
In Zone enrolments
Out of Zone applications
now open

Tauwhare is a well resourced, rural primary school for Year 0-8. We have spaces for Out of Zone Enrolments at some year levels. Applications reviewed by the Board of Trustees monthly.

VISITS WELCOME

Visit Our Website www.tauwhare.school.nz
Contact us on - admin@tauwhare.school.nz or 07 824 0864





Pukeko Preschool Newsletter February 2025

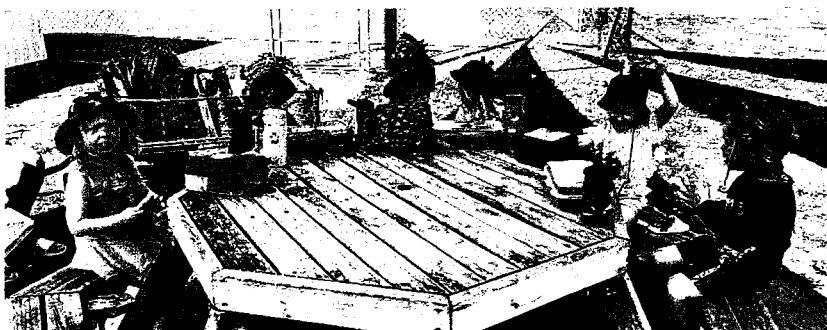
It is so good to be back and enjoying the summer sunshine with the tamariki and hearing about their adventures. It has been a slow start to the year, with everyone enjoying the holidays for as long as possible! But oh what a beautiful Summer it's been so far.

Our youngest learners are exploring all their bodies can do, as they work to gain confidence and control in their bodies and abilities. This learning focus grows dispositions such as resilience, determination, perseverance, problem solving and more.

Our preschoolers are focusing on Communication in all its forms, as they explore a variety of ways to express their thoughts, feelings and ideas through creativity construction, dramatic play, music, storytelling and more.

We have had the Police for a visit which has been a highlight, learning about how they keep us safe and checking out their equipment and police car!

We are enjoying lots of water play fun, picnics and trips to the school! We are loving 2025 already. We have a few part time spaces available in our Under 2 Room, these won't last long so email us on admin@pukekopreschool.org.nz to organise a look around and pick up an enrolment pack!



Ngā mihi,
Shell Proebstel
Curriculum Provider and Educational Lead
Pūkeko Country Preschool
07 824 086



Gardening Tips

Vegetables and Herbs

- **Plant Veges** : plant out seedlings of spring onions, kale, Chinese cabbage and beetroot. Sow or plant Brussels sprouts seeds or seedlings. Choose your spot carefully as they take up to five months to grow.
- **Commit to a regular crop check**: Long summer evenings are ideal for taking a wander around the garden to cool off, harvest some crops, and check in on what's happening in the garden. It's amazing how quickly crops can ripen and need to be harvested. Beans, zucchini and cucumbers are coming to the fore now the weather is consistently warm.

Fruit

- **Preserve fruit**: Are you busy bottling and pickling. There is something wonderful about preserving fruit crops for future use. Avoid using produce that is over ripe; this effects the flavour and the ability for the curing to be successful.
- **Watch out for pests and diseases**: keep your eyes trained on your remaining summer fruits as summer draws to a close. Get into the habit of inspecting crops often, as early detection of pests and disease will give you the opportunity to remedy the problem. For example, with soft fruits like berries, a deluge of rain followed by very hot weather can cause mildew or mould problems. If left untreated, the berries and eventually the plants will deteriorate and potentially die.

Flowers

- **Nurture roses**: Deadhead on a regular basis. At the same time, roses enjoy a side dressing of plant food
- **Take perennial and flower cuttings**; Late summer and autumn are brilliant months to take stem cuttings of many flowering perennials. Plants that are easy to propagate this way are lavender, hebes, lavatera and hydrangeas.

Water Consciously

Preserve precious water while keeping crops hydrated with these eco-minded tips

- **Collect and conserve**- so whenever it rains we need to save for a sunny day.
- **Mulch, mulch, mulch**-Mulching bare soil reduces water evaporation and helps to keep plant roots cool and damp.
- **Right plants, Right place** –Assess the conditions in your garden and plant accordingly to keep supplementary irrigation at its minimum.
- **Timing is everything**-If you really need to water plants , it is best to do so in the early morning, giving the soil (and plants)a chance to really absorb the moisture before the heat of the day
- **Cover Bare patches**-bare soil is much more likely to be dry soil, so try to fill every square inch of growing space with a diverse range of plants. Jam- pack herbs and companion plants alongside vegetables and fruit trees or go for the “layered “ approach and have a “canopy”, “middle layer “and “ ground cover” to ensure every bit of soil is used – and covered.
-

Ladies a Plate

If you have surplus produce from your garden here are some recipes:

Red Capsicum Jelly

3 cups Red Capsicums (Chopped in Whiz)

2 cups Cider Vinegar

1 pkt Jam set

4 cups sugar

1 tsp Tabasco Sauce

Boil all together until it jells

Test as making fruit jelly-

Setting point test-place a saucer in the freezer (5-10 minutes) Place 1tsp jam onto the saucer. When cool, push jelly with your finger. If it wrinkles, it is ready. If not, cook jelly further 5 mins. Then test again.



Plum Sauce

2.5 kg of fresh Plums, quartered and stones removed

1.3 kg of Sugar

4 medium size onions

1 dessert spoon ground ginger

2 dessertspoon ground cloves

1.7 litre vinegar

1-1 ½ of cayenne pepper (depends on your personal taste)

3 dessertspoons plain salt.

Bring to boil and simmer for 3 hours

Strain and bottle.

Chill and Tomato Jam

500g tomatoes

2 red chillies (with seeds)

4 garlic cloves

1 thumb ginger

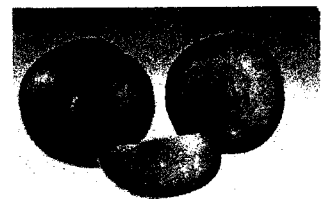
2 tbsp fish sauce

300g caster sugar

100ml red wine vinegar

a drop tomato paste

Skin and blend half the tomatoes, the chillies, ginger and garlic to a fine puree. Add to a pot and heat. Add the sugar stirring all the time. Add the rest of the tomatoes diced into small cubes, and fish sauce and vinegar. Add a drop of tomato paste to give more colour and flavour. Simmer for about 45 mins until thick and jam-like



Windows 10 end-of-life and options for transition

In October Windows 10 will cease to receive security updates, making it vulnerable to use on the internet. At this point, most of the security holes will have been found and fixed, however, there is always the (likely and unavoidable) chance that a bad actor has found security holes and is waiting for support to cease in order to fully exploit the vulnerable systems. This happened, more-or-less, with Windows 7 although I believe it was a good actor who found the vulnerabilities and pointed them out. Microsoft subsequently fixed the holes and released a final patch even though it was past end-of-life support, but there's no guarantee the same thing would happen nowadays. If anything M\$ has become more cutthroat and self-absorbed, not less.

At any rate, you'll need to move on from Windows 10, for the most part. Microsoft is, apparently, going to offer another year's worth of security support for ~\$30USD - possibly doubling the fee in a year's time - but this is probably a temporary solution. Microsoft is also dropping support for Office 365 on Win10, and after a few years Google and the other web browsers will start dropping support for Windows 10, just as they have on Windows 7. Most machines past 2011 run fine on Windows 11, so upgrading is a relatively easy fix. Windows 11 has improved, however there is still a lot of dross you need to turn off. You can also buy a new computer with Windows 11 on it, then you have to transfer all your data and programs/bookmarks over. And there's the e-waste/environmental factor in that option as well. Did you know it takes raw mined earth materials the size of a small car to make a computer (ignoring electrical/transport costs)?

Or, and this is an option that only works for *some* people, you can transfer to Linux, which runs on just about anything. Does it run Windows programs? It does not (there is some limited support via complicated interfaces). Do most common programs also have linux variants? Yes; Libreoffice, Firefox and Thunderbird do everything MS Office, Chrome and Outlook do, for the most part. Does it run most printers? Mostly, the older the printer, the more likely it is to be supported. Is it easy to use? Nowadays, yes. Modern linux distributions like 'Mint' are at least as user-friendly as modern Windows and Mac interfaces. If all you're needing to do is browse the web, reply to emails and write documents, Linux is probably a good option for you, and one which has no ongoing costs or end-of-life date. There is however the downside that Linux problems, when they occur, tend to be more difficult to fix than windows ones.

For me, I stick with Windows, simply because the programs I need are there and not on Linux. M\$ annoys me, but I spend so much time swearing at computers that they generally know how to behave when they're around me, and Windows tends to follow suit.

Needing a change? Contact Matt at 0211348576 or info@homepcsupport.co.nz

\$80 per hour, or \$70 for drop-off-to-workshop services.



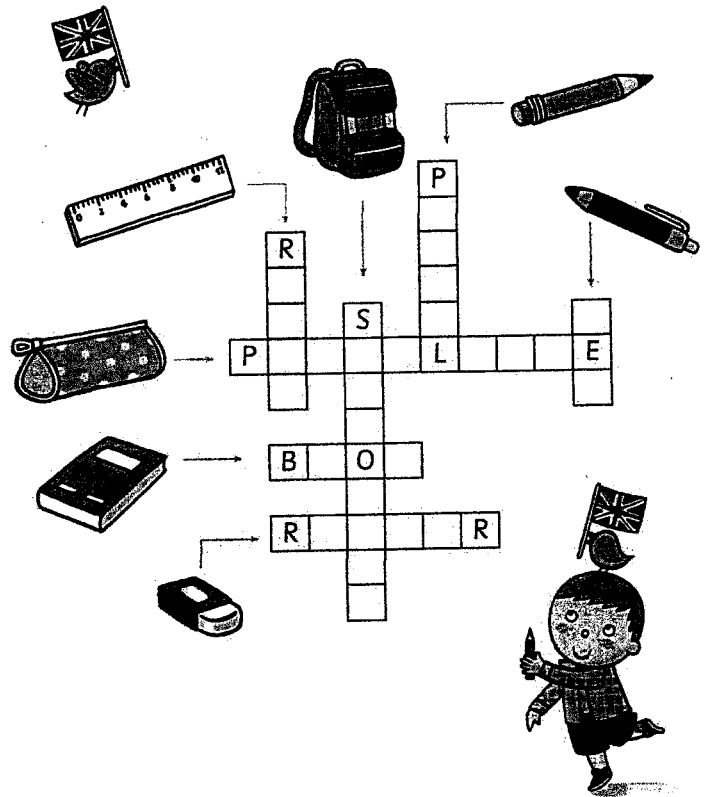
Bentley Home PC Support

BACK TO SCHOOL





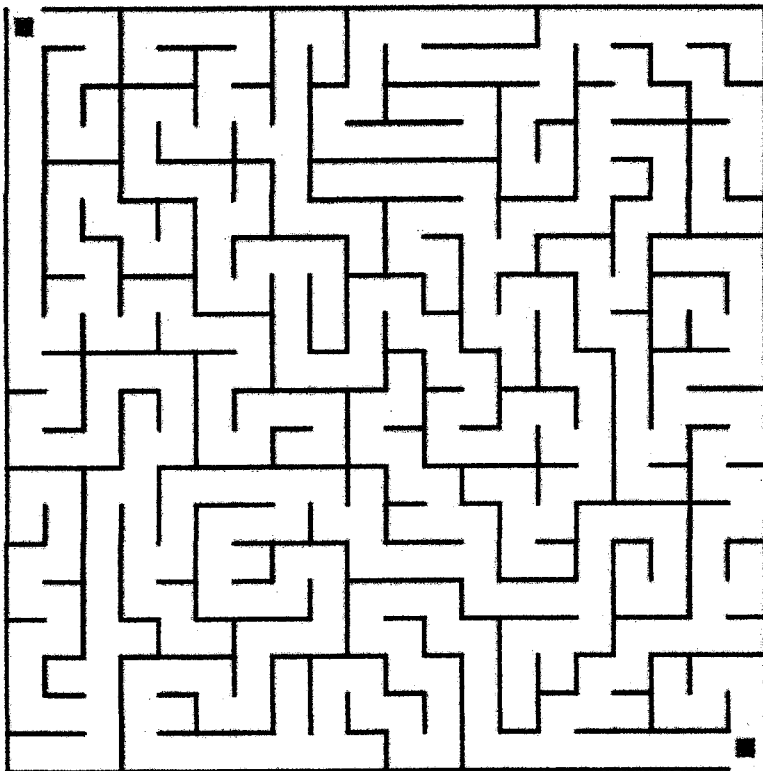
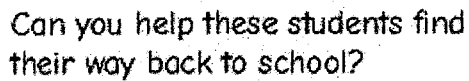
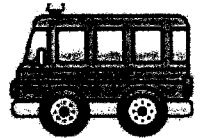
Look at the pictures and write the words.



Back to School Maze

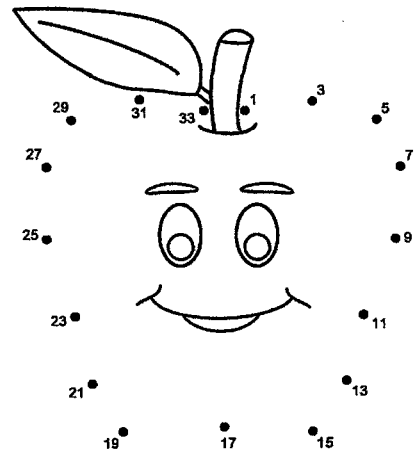
Back to School

Scramble



ircha
fgal
bkoenoto
cdlnarae
reears
lsartpe
eglu
cnlepi
ksed
txobktoe

chair
flag
notebook
calendar
eraser
stapler
glue
pencil
desk
textbook



LAWNMOWING & GARDENING SERVICES

Professional lawn and garden -care services



Alex & Sharyn Macdonald

For free no-obligation quote:

Phone 027 479 7282

or 027 308 6781

alexmacdonaldmowing@gmail.com

www.lawnandgradenservices.co.nz

Residential—Rural—Commercial

Spraying—Fertilizing—Weeding



Edie Sweeney
Senior Consultant/Owner

Cruising specialist and all aspects of travel

Phone 021 734 4140

Email

edie@thetravelbrokers.co.nz



A higher standard



Servicing and installation

on all types of pumps

Full water treatment

service available

DAREN ROSS

Ph: 8241726

Or 0274 346 571

Email:

admin@rosspumps.co.nz

Morrinsville Professional Carpet Cleaning



Carpets and rugs

Lounge suites

Flood recovery

Latest equipment

Very best chemicals

Call David 02 777 200 30



- Gutters vacuum cleaned
- Moss, lichen and mould treatments to roofs, driveways and paths
- Soft wash to houses soffits and fences
- Water blasting and drain unblocking
- Green gunge gone!

Call David 02 777 200 30

TRADESMAN PAINTER DECORATOR

**Thorough Preparation
Premium Materials.
Skilled Application**

**Phone Tere McConnell.
021543743**



Easystake, Your garden plant support

Easystake: easy to use, easy to place, easy to move.
galvanized steel construction
for long life

Bloom Stand: displays
your pots of colour,
position for maximum
impact,
galvanized steel and
available in two heights



Easystake by Machus



Easystake.co.nz

Simon Mobile 02108063432



161 Morrinsville Road, Hamilton, 3286

Phone: 07 856 4522 Email enquiries@newsteadvets.co.nz

Website: www.newsteadvets.co.nz

Newstead Vets offer a full range of veterinary services for small animals including:

- * Consultations (by appointment only)
- * Soft Tissue and Orthopaedic Surgery
- * Digital Radiography and Ultrasonography
- * NZVA Microchipping Accredited Practice
- * Nutrition and product Advice
- * Rural location with ample parking
- * Referral to Specialists
- * PennHIP Certified
- * Full Laboratory Service
- * Hospitalisation
- * Cremation Service
- * Convenient Online Shop

G&M FENCING

WAIKATO WIDE

For all your rural, lifestyle and residential fencing needs

Contact Mitch

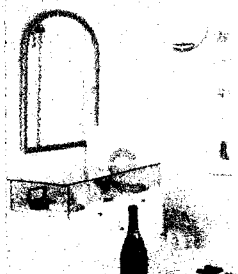
0278418055

gandmfencingnz@gmail.com

Local Boutique Jeweller

DESIGN | MANUFACTURE | SHOWROOM

- Showroom by appointment only
- Private personal shopping experience
- Repairs and maintenance
- Custom design & manufacturing
- Remodelling old or unworn jewellery
- Unique, one-of-a-kind designs & small collection jewellery
- Independent insurance valuation services
- Wine and cheese shopping experience for small groups



GET IN TOUCH

@erikawatsonjewellery

@ErikaWatsonJewellery

erikawatsonjewellery@gmail.com



CTAS

100% NZ Owned and Operated

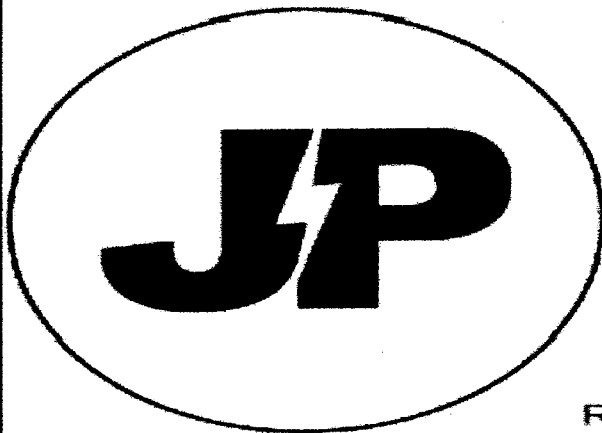
- TXT and Email Alerts and Reminders
- TXT Shortcodes for your business or club
- Flight Status by TXting your Flight to 8808
- Live Video and Audio Streaming on the Internet



Reminders by TXT and Email

YOUTXT™

www.ctas.nz | sales@ctas.nz | www.youtxt.nz



JP ELECTRICS

EST 2022

JAMES PALMER

REGISTERED ELECTRICIAN

⚡ 027 756 6804

⚡ james@jpelectrics.nz

⚡ www.jpelectrics.nz

Residential | Commercial | Heat Pumps



QUALITY ASSURED
MASTER
ELECTRICIAN

COMPUTERISED BULK SPREADERS LTD

Cartage and Spreading

FERTILISER, LINE, UREA SPECIALIST

Competitive Rates

PETER JONES

027 496 3370



***37 years service in the Morrinsville district ***

Dig It Earthworks

EARTHMOVING & EXCAVATION

- House Pad & Driveway Prep
- Driveways
- Section clearing
- Footings & Post Hole Boring
- Landscaping & Lawns
- Farm Maintenance & Races
- Truck & Labour Hire
- Calf/Goat/Pig/Chicken Shed Clearing

CONCRETE LAYING

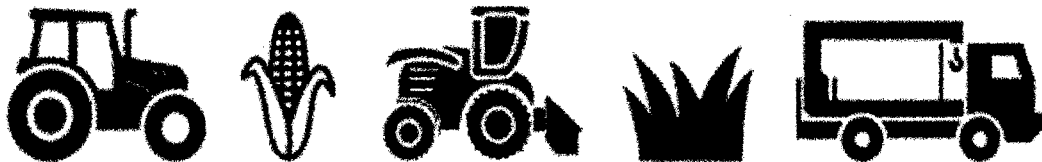
- House & Garage Pads
- Driveways
- Sheds/Workshops
- Patios
- Footpaths



Give Liam a call today for a free quote on 021 02839174



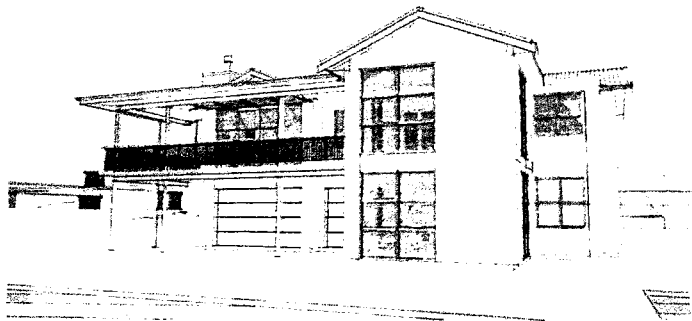
Jackson Contracting



Ag Contracting - Maize & Grass Silage - Hiab & Bulk Haulage

07 887 6688

www.JCLAG.co.nz



Billings Builders Ltd

Licensed Building Practitioner

New housing

Additions & alterations

Dairy sheds

Farm buildings

Contact: Elliot 0275 766 599

Ivan 0274 941 961

167 Hunter Road, Eureka

ivanb.eureka@outlook.co.nz



LOCAL RURAL AGENT SERVICING YOUR LOCAL AREA



Kevin **DEANE**
M 021 970 902

Harcourts

Licensed Agent REAA 2008



GULL EUREKA

PETROL – DIESEL – LPG – OILS & LUBRICANTS

FARM SUPPLIES – GROCERY ITEMS

SHOP HOURS: MONDAY TO FRIDAY 730:AM – 600:PM

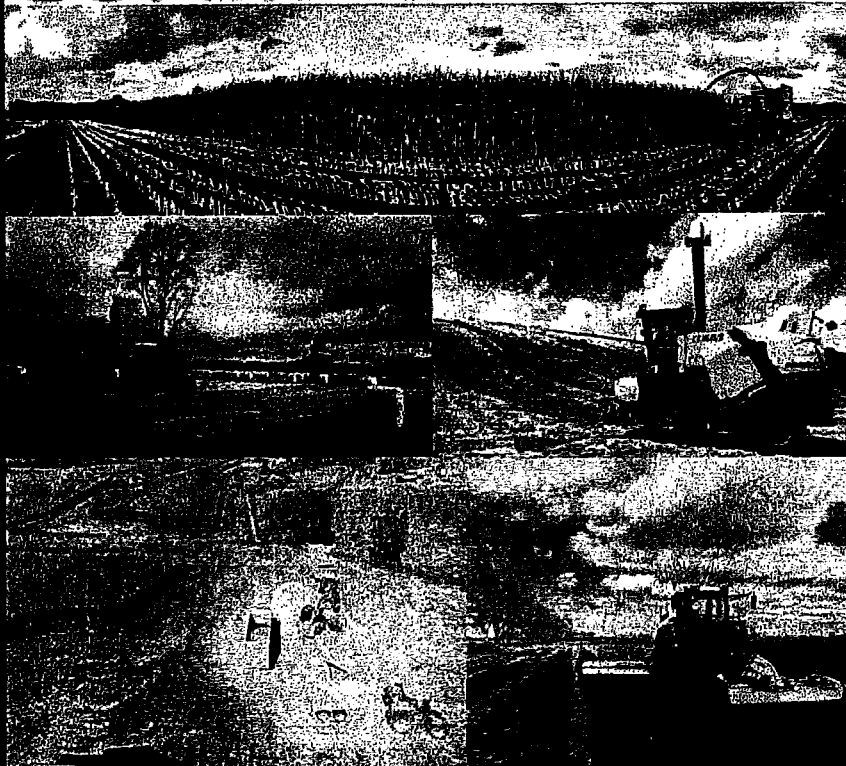
FUEL 24 X 7 PETROL & DIESEL FROM OPT (OUTDOOR PAYMENT TERMINAL)

**EFTPOS – RD1 FARM SOURCE – FARMLANDS – CARDLINK- AMEX -
MASTERCARD- VISA**

FOLLOW US ON FACEBOOK FOR DISCOUNT DAYS AND PROMOTIONAL INFORMATION

**Gull Eureka
1291 Morrinsville Road
R.D.6
HAMILTON
Tel: 07 824 1773**

Walling **CONTRACTING LTD**



For all your:

- **Ground Cultivation**
- **Planting**
- **Re-Grassing**
- **Under Sowing**
- **Grass Silage**
- **Maize Silage**
- **Digger & Spray**
- Requirements**

Phone Zach: 027 450 0125

EMAIL: walling.contracting.ltd@gmail.com

EMERGENCY EVACUATION PLAN

**Use these tips to get
prepared:**

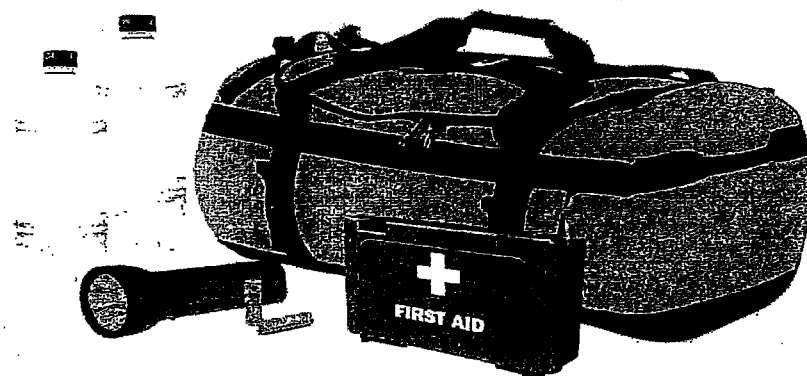
**Gather supplies such as food,
Water, clothing, medications,
batteries and chargers to assemble a
disaster kit.**

Help your neighbours

Share supplies

**Make and keep a list of all emergency contacts. Make sure
all of the family can access these. Save them in your phone**

**Keep neighbours, friends and family informed of your
whereabouts.**





Local Company based at Eureka

Our sheds are all
certified NZ made so by
purchasing from us you
are supporting more
than one New Zealand
Business

Lifestyle
Rural
Industrial
Habitable
Sleepout

Waikato Shed Company

218 Hunter Road

Eureka

07 824 1045

Enquiries@waikatosheds.co.nz

www.waikatosheds.co.nz

WAIKATO SHED C O M P A N Y ✓✓

great sheds, done right!

Ultimate Country Living: Stylish Urban Home with
Charming Waikato Sheds Shed



A remarkable collaboration between Waikato Sheds and Urban Homes

The owners brief was for the shed and house to complement each other seamlessly

This was achieved by completely customizing the standard American Barn to match the house, incorporating materials such as **Dimond Cladding** for the roof, identical **white Aspen Sectional Garage Doors**, and the same **38 Deg Roof Pitch** along with **Flaxpod Double Glazed Windows and Doors**



Watch the journey on our YouTube Channel  YouTube^{NZ}

TALK TO US ABOUT YOUR DREAM SHED

WAIKATO SHED
C O M P A N Y ✓✓
great sheds, done right!





Local Company based at Eureka

Our sheds are all certified NZ made so by purchasing from us you are supporting more than one New Zealand Business

Lifestyle
Rural
Industrial
Habitable
Sleepout

No Bull Sheds

218 Hunter Road

Eureka

07 824 1045

Enquiries@nobullsheds.co.nz

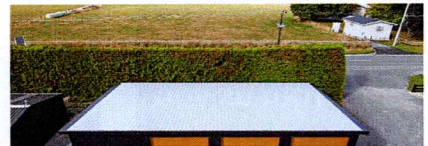
www.nobullsheds.co.nz

No Hassle, Consent Free—Rural Pole Shed

Building a Consent Free Pole Shed, come in and see our newly built consent exempt structure on site here at Waikato Sheds.

It's the largest shed you can build consent free— 110 sqm on rural zoned properties. The module is easily adapted to suit your requirements during the design phase, like a few listed below

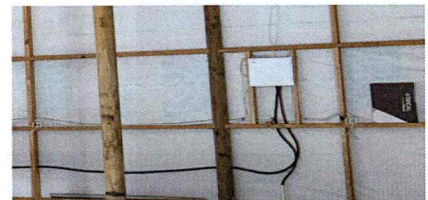
A **Zinc Roof**, designed to reflect sunlight and maintain a cooler temperature on hot days and resistance to various weather conditions



Inside the shed, **Machine Rounded Timber Poles & kilned dried framing timber** compliment a seamless **Concrete Floor** extending throughout the space. These can be removed or used part way through the shed



No Conduit is necessary in this shed. You can put any electrical wires anywhere



Mirrored Joinery on the shed are specifically designed to enhance privacy by preventing outsiders from seeing inside



Under the **Overhang** is beautifully finished in **Grooved Plywood** stained to match the three Insulated **Sectional Doors**



This **Pole Shed** is not only functional but also a stunning addition to the surroundings.

