

Eureka Express

Vol XLV No. 9 Circ 300

www.eurekaexpress.co.nz

October 2024

editor@eurekaexpress.co.nz



Team NZ takes historic 3rd consecutive America's Cup!

FRONT COVER SPONSORED BY

WAIKATO SHED

COMPANY ✓✓

great sheds, done right!



**NO BULL
SHEDS®**

EDITORIAL

Hi Neighbours,

When I was asked to share a bit about us for the *Eureka Express*, I couldn't say no. I always enjoy reading about the journeys that brought each of us here—whether your family has lived here for generations or you're new to the area, we all share the same special place we call home.

My name is Jess. My husband, Ross, and I were fortunate enough to buy land in Eureka in 2015, and by late 2016, we had moved in with our then 3-month-old son. We had been looking for somewhere rural but still close to Hamilton—a place where our future kids could grow up with the best of both worlds. Eureka was perfect for us. My dad had heard about this spot, and we came out right away to see it. I had driven past Eureka many times growing up, with family stories about my grandma's sister Noleen and her husband Joe, who owned the Eureka Petrol Station. It's funny to think that we've now made this area our home.

We absolutely love our little patch of land. I grew up locally in Horsham Downs on a similar piece of land (which is now almost cut through by the new expressway!). I have the best memories of running through paddocks, building treehouses, and raising Ag Day lambs. Speaking of lambs, this is our first year with them, and I apologize to our neighbours for our very vocal, human loving, attention-seeking girl. Thankfully, she's calming down now that she's nearly off the bottle!

Ross, on the other hand, grew up in Auckland with a family who loved growing their own vegetables and preserving fruit. The idea that our kids could experience both of our childhoods, was special to us. Now, eight years later, we have two beautiful boys, Austin (8) and Harvey (5), both attending Newstead School.

We are very grateful to live in a community like Eureka. When people ask me, "where the heck is that?", I smile and explain how perfectly situated we are – just 15 minutes to town, and equally close to Morrinsville or Cambridge. It's a caring small community who even has a local newsletter that gets delivered to our letterboxes every month, a quick message on the FB group and someone always offers a genuine suggestion or lends a hand. How lucky are we!!!



JUSTICE OF THE PEACE FOR EUREKA

JP. Kevin Deane Please call or text to arrange an appointment.

Kevin Deane JP m 021 970902 , Kevin is located in Eureka.

DONATIONS ACCEPTED

We are all aware that the cost of everything is going up all the time. The printing of the Express is also costing more. If you would like to make a small donation, we would be very grateful. We will send you a receipt (which is not tax deductible as we are not registered as a Charitable Trust), for your donation so please put your name as a reference. Our bank account number is 03-1559-0042660-00. The name of the account is Eureka Express. We would also like to thank everyone who puts their loose change in the box at the Gull Station, all donations are gratefully received and help towards the rising costs. A huge thank you for the donations we have received.

GARAGE SALE AT THE HALL ON SATURDAY 9TH NOVEMBER.

This is a community garage sale/car boot sale. It will be well advertised, and there is no charge to have a table. Once again if you are interested in having a table, call Gayle Orr 0272917150.

CLASSIFIED ADDS

F&P "wash smart" washing machine surplus to requirements, in excellent working order about 9 years old, make a fair offer, can be viewed at Appleton lane Call Charlie 021327728

WELCOME

Welcome back to Craig and Catlin Van de Pas and their daughters Isla and Indie. They on the family farm on Hooper Rd. 0278476194.

THE SCULPTURE PARK

Join other locals and frequent visitors to enjoy the park any daylight hour throughout the year. Come around soon to check out the park if you haven't been for a while. The annual pass provides opportunities to enjoy our longer daylight hours of spring and summer.

This restoration of the former Winstone's quarry is a great place to relax and enjoy friends and family. With an annual pass you can get in more frequent walks and picnics -- and also supports the stewardship of this regional asset. Just go to our website to find out more www.sculpturepark.co.nz or pop by for an update.



The Sculpture Park
at Waitakaruru Arboretum
Waikato's art-in-nature experience

ANNUAL PASS TO THE PARK

JUST \$50/ADULT
\$20/CHILD

THE EUREKA EMERGENCY RESPONSE PLAN UPDATE

The Eureka Community Response Plan is still in progress but getting closer to completion.

A meeting was held on Monday 14th to get the plan closer to be finalised and then passed on to the Council Civil Defence Team. To be included in the plan we need people with specific skills to be able to contact should the need arise. These include:

Doctor

Nurses

Builder

Drainlayer

Plumber Josh Turner

Electrician James Palmer

Arborist

Companies able to provide big machinery Dig It and Walling Contracting.

We also need people with generators who could help. The generators could be set up at the hall to enable people to keep warm, have a hot drink and some food. Also, toilet facilities, and just somewhere that is warm and safe.

The hall is the only public facility we have in Eureka for an emergency, so this is another critical reason we need to keep it going with a strong committee.

It was also suggested that each road has a civil defence contact person. That person would have the names and contact details of the people in their road, so they can check up on everyone to see if they are safe, have suffered any damage, need anything e.g. water, power, access, OR a Biggy, do they need children picked up from school? We all have concerns about our privacy however the contact people are likely to be known by you and the numbers will be kept only by one person, and your privacy would be respected. We are only concerned about your safety.

We are looking for a Civil Defence Contact for the following roads

Main Road from Platt Road to Hinton Road

Main Road from Hinton to Hunter Road Gayle Orr

Hooper Road Sharon Laurent

Hinton Road

Eureka Road

Appleton Lane Kathryn Schicker

Schollum and Friedlander Roads

Masters Road

As you can see this is a big job and for the safety of us all as a community we need to be prepared. We have had a couple of cyclones, flooding, power outages and roads blocked off. So YES it could happen to us at any time.

Please contact us if you are prepared to help. We all believe that nothing bad will happen, and yes hope and pray it doesn't, however, being prepared costs nothing but a bit of time, a little effort and most of all knowledge of where to go and who to call in an emergency.

HALL UPDATE

Hi, I am please to report that after the articles and the big plea in the last issue of the Express we have got some interest from people wanting to join the Hall committee. Thank you for those people. We still need a few more and we know that new ideas are needed to move us forward. Especially IT ideas. This could be setting up an online booking system for a start. To have bookings done online, that would save a lot of work by one or more people. If you have these skills or could help set up something for us, I am waiting by the phone to hear from you.

I have spoken to Jill at Puketaha hall, and the new committee have some amazing ideas to make the job easier. I know it can be done with our hall as well.

Contact Gayle Orr for any bookings or any other enquiries. 0272917150

Usage	Residents	Non - Residents
Hall per day	\$ 50	\$100
Social function	\$150 - \$300	\$250 - \$500
Children's party	\$50	\$100
Bond	\$400 Secretary's Discretion	\$500 Secretary's discretion

FROM THE EXPRESS COMMITTEE

Did you know that for 10 months of the year the Eureka Express is printed. Each month 300 issues are distributed to the community. Have you considered advertising in the express for as little as \$10 per month and know that your advert is getting seen by 300 families? Unfortunately, we have lost a few advertisers for various reasons over the last year, and to enable us to pay our costs we need people to advertise with us. We have spaces available now so if you are interested in finding out more. Send us an email for more information.

EUREKA EXPRESS - ADVERTISING RATES 2023

Classified adverts Free		
Small business advert x 10 insertions	\$10 per month	\$100 per year
Third of a page x 10 insertions	\$15 per month	\$150 per year
Half of a page x 10 insertions	\$20 per month	\$200 per year

For all articles, advertisements, photos, ideas and suggestions, please use the express email address. The Express is printed Feb - Nov each year
All articles should be sent to the Editor by the 20th of each month.
editor@eurekaexpress.co.nz

WE NEED



The hall cannot be maintained or kept in use without a functioning committee.

We need locals to come together to ensure the longevity of the hall, if we don't get a committee before our AGM in September 2025 we will have to consult with community and council around the future of the hall.

We don't want to lose the only community hub we have left.

Please contact Gayle Orr on email gorr@xtra.co.nz

Or

Phone 0272917150

Rob and Jill McGuire

Puketaha

This award is for a team that have been working together for the community since Rob McGuire was elected in 1983 as councillor for the then Waikato County Council. So it is with deep sadness that that on 18 September we learned that Rob had passed away peacefully, surrounded by his family, aged 77.

Rob and Jill McGuire have been a team working for the community ever since Rob was elected in 1983 as Councillor. During his 39-year term, Rob chaired the first Waikato District Plan Review and represented the Council on the WRC central catchment committee and the Hauraki Gulf Forum. He established community committees to bolster the voice of local constituents and worked to extend the sealed roading network to improve living conditions.

Rob had on occasion called Jill his unpaid PA, helping deliver notices to countless letter boxes and taking endless phone messages. But Jill has also worked independently for the community as bookings administrator for the Puketaha Hall and as a long-standing member of the committee that produces and distributes the Eureka Express monthly news. She has formerly served on the Puketaha School PTA and Board of Trustees, and has also formerly served as President of the Puketaha Country Women's Institute and Gordonton Playcentre.



Tamahere-Woodlands Councillors' update October 2024

Strong community feedback on Council survey

By late last week nearly 700 people had made more than 1,200 submissions on the Council's survey for its Long Term Plan for 2025-2034. The survey, which included rating options for the Eureka Hall, closed on Sunday.

Your input will help guide the Council on how much to invest in different services and activities, from libraries to property, and from roading to waste management. Following analysis, Council planners are expected to bring the survey results back to the Council by early December.

As the Council grapples with a major loss of funding support for its roading from NZTA (a shortfall of about \$35m for new works and \$1.9m for maintenance) and rising costs across other services, your feedback is important for helping us to focus Council investments and to propose rates levels.

Prior to delaying our LTP until next year to gain greater certainty on our approach to 3 Waters, the work programmes and budgets originally developed for a 10-year plan indicated the need for a general rate increase of 13.75% this year and 6% for the next two years. After cutting the general rate increase from 13.75% to 11.9% this year the Council now has to review forward budgets, and may have to consider reducing some levels of service if you want us to keep rates as low as possible.

Proposed new speed limits

The Council is developing a new Speed Limit Plan to conform with speed limit rules introduced by the Government this year reversing changes made by the previous Government. The new plan will take the place of our Speed Limit Bylaw 2011. Let us know what you think about the speed limit changes in your Ward by 27 November. Go to www.waikatodistrict.govt.nz/say-it.

How should we consult with you?

We're updating the Council's Significance and Engagement Policy which establishes how we should consult with our community, and on what subjects. The policy determines the 'significance' of Council's decisions and proposals, and how the Council will engage with the community on different types of proposals – depending on their 'significance'. Tell us what you think. Go to www.waikatodistrict.govt.nz/say-it.

Mayoral Awards

Congratulations to all Mayoral Award recipients – and thank you for your outstanding voluntary contributions over many years to your communities. Tamahere-Woodlands Ward award recipients this year included: former Eureka Councillor Rob McGuire and Jill McGuire; long-standing Tauwhare and Matangi Hall Committee chairs Lockie Verner and Ian Wallace; and Jane Manson of St Stephen's Tamahere, convenor of the Tamahere Country Market since it started in 2004. Sadly, Rob McGuire passed away not long before the awards were presented.

Labour day services

Rubbish and recycling will be collected as normal on Labour Day (Monday 28 October) and for the following week. Council offices and libraries will be closed on Labour Day.

WRC transport rates re-think

Waikato Regional Council presented this month to Waikato District Council on its early thinking on some new options for rating for public transport which are expected to be developed for community consultation early next year. One of the options, assessed favourably for its fit with principles including fairness, and representing only moderate change, was a "Greater Wellington Approach" which would divide the Waikato region into three rating zones – city, central area, and regional. The central area would include the southern half of Waikato District, as well as Waipa District and part of Matamata-Piako District around Morrinsville. Estimates (illustrative only) of uniform charges for residential properties that might apply for the central area ranged from \$26-\$28 to \$55-\$77 (depending on the model chosen). An option to set rates based on property CVs has not yet been modelled for this "Greater Wellington Approach". A recording of the October 8 presentation is available on the Waikato District Council website on its 'Agendas, reports and minutes' page.

District Plan milestone

Council decisions on Variation 3 – Enabling Housing Supply, introducing a new medium density residential zone in our main towns, Ngaruawahia, Huntly, Pookeno and Tuakau, will be notified this week (22 Oct) to meet a Ministerial deadline and made operative through the Waikato Proposed District Plan. These will be the first parts of the Proposed District Plan to be declared operative. These particular provisions are not applicable anywhere in the Tamahere-Woodlands Ward. However, as appeals on the Proposed District Plan are being progressively settled, more sections of the Proposed District Plan are expected to be made operative early next year.

Roadworks

- **SH26** – NZTA roadworks on Morrinsville Rd, SH26, near Eureka are still underway but expected to finish by 15 November (if not before). East bound traffic is being managed through the site, and a detour for west bound traffic will continue to operate along Tauwhare and Platt Rds until the works end. Watch for NZTA updates here: www.journeys.nzta.govt.nz/regions/waikato/roadworks.
- **Hunter Rd, Eureka** – Preparation for rehabilitation of the Hunter Rd 'straight' from No. 167 to SH26 starts this week. A stop/go system will operate until after the works on SH26 are finished, to reduce inconvenience. After that the Eureka end of Hunter Rd will close (this is likely to be from 18 November) to allow the Waikato District Alliance to rehabilitate this section of road which has significantly failed. The work – which may also include some minor surface patching further along Hunter Rd – is expected to be finished by about 29 November. There will be no through-traffic on the closed section, but restricted access will be allowed for residents and service providers. This means the public bus (currently diverted down Hunter Rd), the Tauwhare school bus, the rural postie, rubbish collection vehicles and others, will continue to be managed through the site. Watch for updates here: www.waikatodistrict.govt.nz/roadworks.

Contact your Tamahere-Woodlands Councillors:



Crystal Beavis, mob 0275 957 927, email crystal.beavis@waidc.govt.nz

Mike Keir, mob 027 449 3012, email mike.keir@waidc.govt.nz



LOCAL RURAL AGENT SERVICING YOUR LOCAL AREA



Kevin **DEANE**
M 021 970 902

Harcourts Kevin Deane Real Estate
Licensed Agent REAA 2008

Ladies a Plate

Chocolate Hobnobs

Homemade chocolate wheaten biscuits

125 g butter

80g brown sugar

2 T golden syrup

100g Plain Flour

½ tsp baking powder

100g Oats



Cream butter and sugar, and golden syrup then add remaining ingredients

Roll into balls, flatten with a fork and bake 180 for approx 15mins

Cool and ice with melted chocolate chips.

Scones

2 1/2 cups of self-rising flour

100g Butter

1 cup Milk with cap full of white vinegar

1 Cup of raisins or cheese, pinch of cayenne pepper or dates whatever flavour you like

Preheat oven to approx 200 degrees

Grate frozen butter into flour and combine

And remaining ingredients and combine

DONOT OVERMIX MIX OR BEAT UP

Gentle quick knead and pat into a flat rectangle (1 inch) Thick and fold on its self get it to 1/2 inch thick and cut into squares. Place on water splattered baking paper and brush with milk



Bake for approx 15mins



Hello everyone

Isn't it great to have the longer warmer days upon us – time to relax and enjoy all the little things around the home.

Gosh what a wonderful week we had in October with the Waikato Symposium held in Cambridge – we had lots of people drop by from all over NZ – Invercargill to Kerikeri and even a group of ladies from New Sales Wales in Australia.... They all agreed that Symposium was a huge success and well done to our local Waikato Guild members for all their hard work before during and after this event.

Tis the Season is now in Christmas mode, and we have some lovely Christmas kit projects for presents or as gifts. We are also receiving daily more and more Christmas fabric so why not swing by and take a look at what we can offer you for ideas for Christmas day ... remember it is only a few weeks away now. Also in stock is a new Christmas range of goodies and some lovely cotton and merino scarves – these make fantastic gifts and are easy and light to post to those not with you at Christmas. Or you could even spoil yourself with one!

Whatever you are looking for we can help you – so pop in and see us and we look forward to seeing you soon.mm

Christmas days and hours:

Normal hours Tuesday 24th December

Closed 25th and 26th December

Normal hours 27th, 28th, 30th and 31st December 2024

Closed 1st and 2nd January 2025

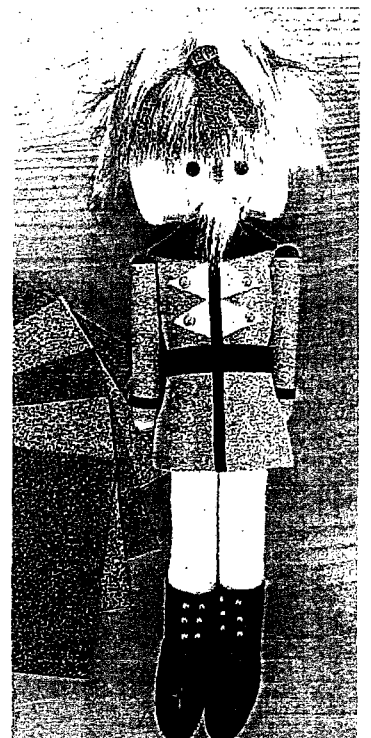
Normal hours from 3rd January 2025

Week days 9.30am – 4pm Saturdays 9.30am – 3pm

Phone: 027 280 4080

Follow us on Instagram: @tistheseasonmatangi

www.tistheseason.co.nz





The Vet House: A New Era for Companion Animal Care at Matangi Factory

The historic Matangi factory in Waikato has welcomed a new veterinary practice that enhances the community's pet care services. Owned by Dr. Gabe and Mia Hagard, The Vet House is dedicated to companion animals, offering a range of veterinary services in a welcoming environment.

Established in 1885, the Matangi factory has long been a cornerstone of the local community. Originally a dairy processing facility, it played a vital role in New Zealand's agricultural history. In 2003, the Mowbray Group acquired the site and committed to its restoration and revitalisation, transforming it into a vibrant hub for various businesses while preserving its historical significance.

Gabe brings over 30 years of veterinary experience to The Vet House. A graduate of Bristol Vet School in 1993, he has dedicated his career to excelling as a general practitioner and surgeon. His wife Mia, a skilled veterinary nurse, complements his expertise, and together they have created a family-owned practice that reflects their passion for animal welfare.

The Vet House is supported by a talented team, including veterinary nurse trained Sonia Priddey and Diane Wescott, who manage the front desk with professionalism and warmth. Their efficient office management skills ensure smooth operations and effective client communications. Along with Demi Smith, an experienced veterinary nurse with a background in practice management, Demi always guarantees that pets receive the highest standard of care during their visits.

Offering a comprehensive array of services tailored for companion animals, The Vet House provides routine wellness exams, vaccinations, dental care, diagnostic tests, surgical procedures, and emergency care. Gabe's extensive experience allows the practice to handle both routine check-ups and complex treatments, ensuring every pet receives the care they need.

Currently operating from a pop-up restored cottage within the Matangi factory complex, The Vet House is working on transforming another railway cottage into their permanent home. This boutique-style clinic is designed to create a comfortable atmosphere for both pets and their owners.

As they embark on this exciting journey, Gabe and Mia are committed to providing exceptional veterinary care that reflects their dedication to animal welfare. Their efforts not only enhance local pet care options but also contribute to the ongoing revitalisation of the historic Matangi factory site. With their combined experience and the support of their skilled team, The Vet House is poised to become a cornerstone of companion animal care in the greater Waikato area.

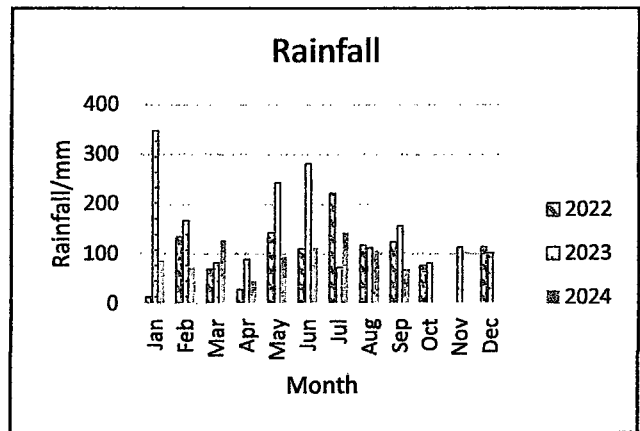
E: mia@thevet.house

P: 07 829 5676

W: www.thevet.house | **A:** 452 Tauwhare Road, Matangi, HAMILTON 3284



Weather for September	2024	2023
Rainfall total/mm	68.5	155.5
Rain Total for year/mm	852	1545
Rainy days	10	16
Most daily rainfall/mm	18	38
Highest wind speed (km/hr)	55	48.2
Temp high	20.3°C	22.2 °C
Temp low	-0.2°C	0.3 °C



TAUWHARE INDOOR BOWLS NEWSLETTER

Welcome to the October newsletter from the Tauwhare Indoor Bowling Club.

Well, the season has now finished for the year. We have had a good year even though the numbers attending some club nights have been very mixed. It is definitely a game that is enjoyable so please keep us in mind for next year.

Hopefully see some new faces next March when the 2025 season starts.

We have members within the club that will be happy to introduce/help you get started. We are a friendly, sociable club and there is always lots of laughter and banter.

We need new members in the hope that our club will survive.

Recent Results:-

- 19.09.24 President and Vice President Night
 Winning team – Jim Arnold and Val Rippey
 Runner up team – Lockie Verner and John Rippey
- 17.10.24 Christmas Tournament
 The winning team was from Matangi
 Runner Up team was from Pokuru

Other results that should be mentioned. The Jack and Jill tournament was held in August with Bev Meads and Lockie Verner being the runner up team.

The Clarrie Hancock tournament was held in September and the team of Jim Arnold, Bev Meads, Darron Cutler and Glenda Goodare won the tournament. When we looked at the winning teams on the trophy it appears that it was the first time that a Tauwhare team had won the tournament.

In conclusion it has been a relatively good year. We do desperately need new members to make the club viable to run. Our aim going forward is to make bowls a fun social evening so come along and let's make that happen.

For more information please contact - Bev Meads 021 172 7822 or Jim & Rosalie Arnold 07 887 4832 or John Cottle 07 824 0992 or 027 524 0992



Gardening Tips

What to do this month

Sow-Direct sow carrots into soil that has been dug over. Carrots thrive in loose, well-draining soil that is free from stones or lumps. Sandy or loamy soil is ideal for growing straight and healthy crops. Avoid sowing too deeply, as this might hinder germination.

Spring onions need little space and alongside other vege so pop in some seedlings whenever you've got a gap left after harvesting something else.

Labour weekend is the traditional time to plant tomatoes. Prepare the soil first by digging in a general fertiliser. Young seedlings need nitrogen for healthy leaf growth early in the season and potassium for fruiting later on, so feed with potassium-rich tomato food after the first flower trusses appear.

Natural Home Gardening Remedies

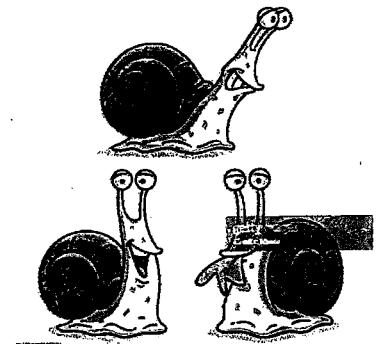
Combat fungal problems and deter caterpillars with a homemade fungicide

Mix 1 teaspoon of baking soda, 1 teaspoon of soap flakes and 2 teaspoons of vegetable oil in 1 litre of water.

Spray on plant leaves every three days

Neem oil is nature weapon against caterpillars and mites Spray Neem oil on affected plants to suffocate these pests and protect your garden **As these are natural remedies they need to be repeated often.**

Slugs and Snails- These slimy critters love a yeasty treat either beer (if you can spare some) or there is a cheaper alternative yet still effective that you can make.



Yeasty Mixture.

In a Bowl or bottle put 2 cups lukewarm water 2 tsp flour, 2 tsp sugar any sort, raw or processed, 1 tsp yeast (baking yeast)

Stir or shake until all combined, pour some or all of it into container/s that you have set in the soil with the lip of the container at ground level. When putting in the brew, it doesn't have to be full to the top, but deep enough you don't have to keep filling it up due to evaporation. However, you do want to replace every couple of days, for a couple of reasons firstly you will want to take the dead slugs and snails out. Just chuck them on the lawn ... the birds will have a tasty snack without slug bait toxins harming them (my chickens love them), secondly, if you leave the refreshing stage for too long, that liquid is going to smell disgusting! Clean the dead'ns out daily makes room for more of those slimy critters to smell the brew and "fall in "Top up liquid as needed. Watch your greens grow, wholly (not holey) and enjoy the fruits (or veggies) of your yeasty labour.

Your data is gone: Part 2

Perpetual storage isn't a thing. Even hard drives which aren't used eventually deteriorate, something the music industry has been discovering recently. During the 00's record companies started transferring old recordings from tape to hard drives as the tapes were deteriorating. However recently about 20% of the hard drives which were stored were found to have failed, despite having been left unused and unplugged. Circuitry and capacitors age. Which leaves us with the dilemma of how to store data so that it doesn't disappear, and the only solution at the present point in time appears to be redundancy.

Redundancy is backing stuff up to at least one other place, so that if one storage device dies, you can restore from the other one. At this point in time cloud storage starts to look pretty good, mainly because the online systems already have multiple levels of redundancy built into them ie. you're not relying on a single hard drive somewhere out there in the world, you're relying on many. Cloud storage costs more and is reliant on (largely foreign) companies which could potentially disappear at any point. But realistically if you pick one of the larger companies (google, Microsoft, amazon or apple) the chances of them going under is much lower, and you can always change providers if you need to. However it is nice to have something a bit more private and local to store upon, without having to get involved with online accounts, passwords and the potential for your information to be stolen as part of a data breach. You can create multiple redundant backups yourself if you're diligent, by backing up to several external devices, on either a weekly or monthly basis, and unplugging them from your computer afterwards to prevent data loss via electrical spikes, viruses and theft.

This still doesn't solve the issue of how to store stuff *permanently* though. Recently there's been some developments in the field of long-term storage: a company called Cerabyte has developed low-cost, resilient glass-platter storage which could last up to 5000 years, though it'll be a while before it's commercialised, and that's if the company manages to stay profitable. Other organisations are attempting similar things. That's good news, as hard drives, DVDs and CD-ROMs are environmentally damaging, due to their short lifespan.

Despite being horribly easy to scratch and ruin, I still have CD-ROMs from the 90's that're working, and (albeit fewer) DVDroms from the 00's which also work. But good luck storing your data on a paltry 640MB or 4.7GB storage device nowadays. No, if you want data security, right now you're left with cloud storage, or local backups to 1 or more external hard drives, replacing them when they fail. Nothing lasts forever.

Worried about the lifespan of your cat photos? Contact **Matt at **0211348576** or**

info@homepcsupport.co.nz

\$80 per hour, or \$70 for drop-off-to-workshop services.



Bentley Home PC Support

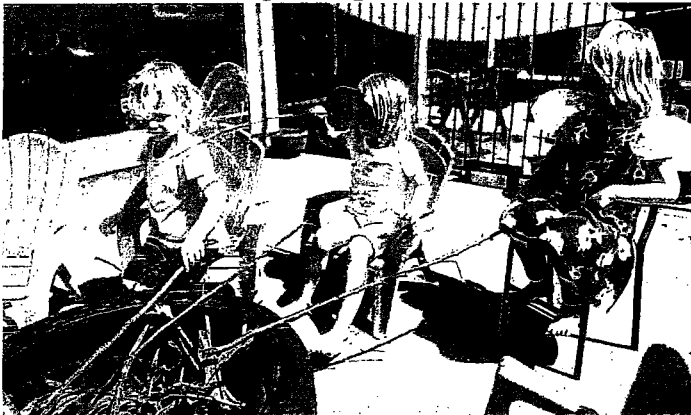
Spring is upon us and we are loving it! Spring means long days outside in the sunshine, picking fruit from the orchard, picking daisies, picnics on the grass and all the water, sand and mud play we could ever want.



We have harvested the last of our winter veges and begun planting our spring and summer crops. We have a working bee coming up in November and we can't wait to get our gardens up and running. The tamariki also enjoyed a trip to Tauwhare School to watch their friends compete in Ag Day. Some of our 4 year olds had lambs and were able to compete too. It is always such a blessing to be part of the Tauwhare Community.



If this sounds like the childhood you want for your child, email us on admin@pukekopreschool.org.nz - enrolments for 2025 are now open, spaces are limited so get in quick!

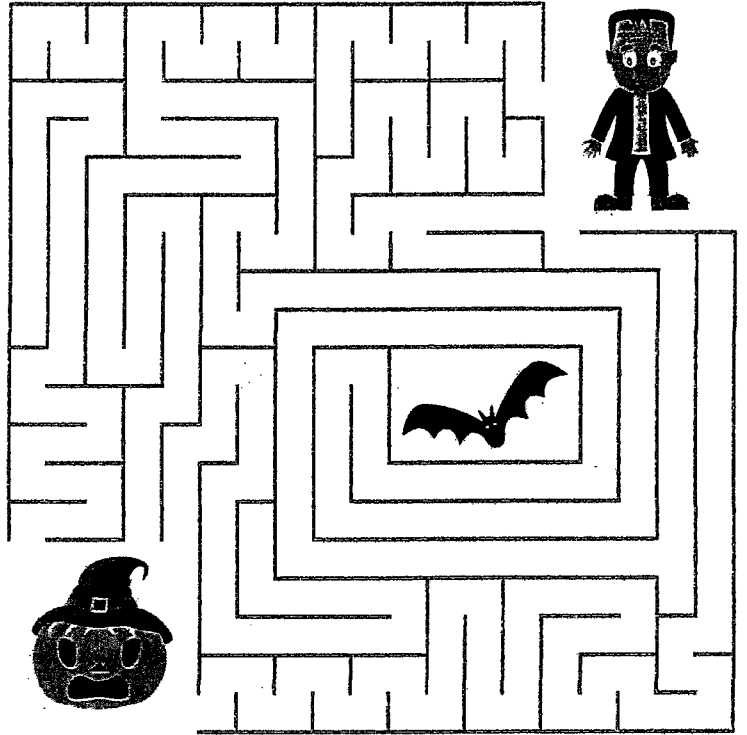


Happy Halloween!



Halloween Word Scramble

1. okypos _____
2. pkpinum _____
3. treta _____
4. oghst _____
5. ydanc _____
6. rpivame _____
7. keonstel _____
8. luhgo _____
9. pecyre _____
10. tomcuse _____
11. nthua _____
12. owaercrcs _____
13. iyderah _____
14. oblod _____
15. labck act _____
16. ogbiln _____
17. mymmu _____
18. rasye _____
19. piserd _____
20. sremca _____



Happy Halloween!



DIRECTIONS: Find and circle the vocabulary words in the grid. Look for them in all directions including backwards and diagonally.

N	O	Y	T	K	S	F	H	M	H	A	T	E	K	S	A	C	M	T
B	C	B	P	U	S	Z	T	Y	L	N	B	E	V	X	A	R	O	H
T	T	X	R	E	H	A	U	N	T	A	G	L	U	E	D	T	G	
E	O	Z	N	E	E	T	M	W	S	H	U	Y	L	V	Z	K	N	I
N	B	J	R	I	C	R	R	I	D	O	M	D	A	H	N	S	A	N
O	E	Y	P	A	H	A	C	S	H	E	R	B	B	A	I	A	H	D
T	R	H	O	C	K	B	T	B	B	O	A	P	R	O	D	S	F	I
S	A	U	T	U	M	N	S	R	N	C	E	P	Z	B	O	D	N	M
B	R	I	L	H	V	C	O	T	A	B	N	O	T	E	L	E	K	S
M	W	Y	O	Q	A	O	W	N	Y	N	R	T	E	M	A	R	E	J
O	D	W	K	D	M	B	C	H	W	E	R	E	W	O	L	F	I	C
T	L	S	J	S	P	W	E	D	P	W	B	Y	D	N	A	C	R	A
G	R	P	T	B	I	E	W	A	F	T	J	Q	I	T	B	D	E	C
G	D	I	M	R	R	B	E	Y	A	F	T	E	R	L	I	F	E	K
Z	C	D	C	N	E	R	M	Z	U	W	I	R	U	C	T	M	Y	L
K	B	E	G	K	M	M	E	U	Y	X	F	M	M	O	O	N	A	E
O	X	R	V	I	U	A	F	Q	V	D	B	X	W	J	X	D	J	R
W	M	P	R	M	W	K	C	A	L	B	B	L	O	O	D	S	U	X
L	O	B	B	Z	D	I	R	V	Q	K	H	I	C	M	H	D	S	M

Mummy, Scary, Spider, scream
 Scarecrow, Hayride, Blood, Black cat, Goblin,
 Skeleton, Ghoul, Creepy, Costume, Haunt,
 Spooky, Pumpkin, Treat, Ghost, Candy, Vampire,

Halloween Sudoku

Fill in the grids so that each column, row, and box contains one and an only one of the letters from the given word.

	D				
S					H
W			O		S
O	S				D
D					W
				H	

SHADOW

	P		I		
S		E			
D		P			
			P		R
			D		E
		R		I	

SPIDER

	I				M
	Z	O			I
E				Z	
	B				Z
I			Z	M	
Z				I	

ZOMBIE

			N	E	
R		O			
					O
N					
			R		G
	G	A			

ORANGE

- AFTERLIFE
- AUTUMN
- BAT
- BLACK
- BLOOD
- BOO
- BROOMSTICK
- CANDLE
- CADAYER
- CANDY
- CASKET
- CAT
- CAULDRON

- COBWEB
- COFFIN
- CREEPY
- DEMON
- EERIE
- GHOST
- GHOUL
- GRIMREAPER
- HALUNT
- HOWL
- MASK
- MIDNIGHT
- MOON

- MUMMY
- OCTOBER
- OGRE
- OWL
- PHANTOM
- PRANK
- SKELETON
- SPIDER
- TOMBSTONE
- TRICK
- VAMPIRE
- WEREWOLF
- WITCH

**LAWNMOWING &
GARDENING SERVICES**

Professional lawn and garden –care
services



Alex & Sharyn Macdonald

For free no-obligation quote:

Phone 027 479 7282

or 027 308 6781

E::macdonaldmowing@gmail.com

Www.lawnandgradenservices.co.nz

Residential—Rural—Commercial

Spraying—Fertilizing—Weeding

HAIRFIELDS

HAIR DESIGN

95 HOOPER ROAD

Sharon Laurent

Full salon facility in Eureka

Total hair care professional

and many years experience

Agent for Nutrimetics

Open Tuesday to Thursday

Late nights Tues/Thurs

Tel. 027 280 5978



Servicing and installation

on all types of pumps

Full water treatment

service available

DAREN ROSS

Ph: 8241726

Or 0274 346 571

Email:

admin@rosspumps.co.nz

**THIS SPACE IS AVAILABLE
FOR ADVERTISING.**

**10 ISSUES PER YEAR
DELIVERED TO
300 FAMILIES IN THE
COMMUNITY.**

**EASY AND AFFORDABLE
WAY TO
PROMOTE YOUR BUSINESS,
BIG OR SMALL**

To place your advertisement
Email the Express Committee
editor@eurekaexpress.co.nz

**TRADESMAN PAINTER
DECORATOR**

Thorough Preparation

Premium Materials.

Skilled Application

Phone Tere McConnell.

021543743





GULL EUREKA

PETROL - DIESEL - LPG - OILS & LUBRICANTS

FARM SUPPLIES - GROCERY ITEMS

SHOP HOURS: MONDAY TO FRIDAY 730:AM - 600:PM

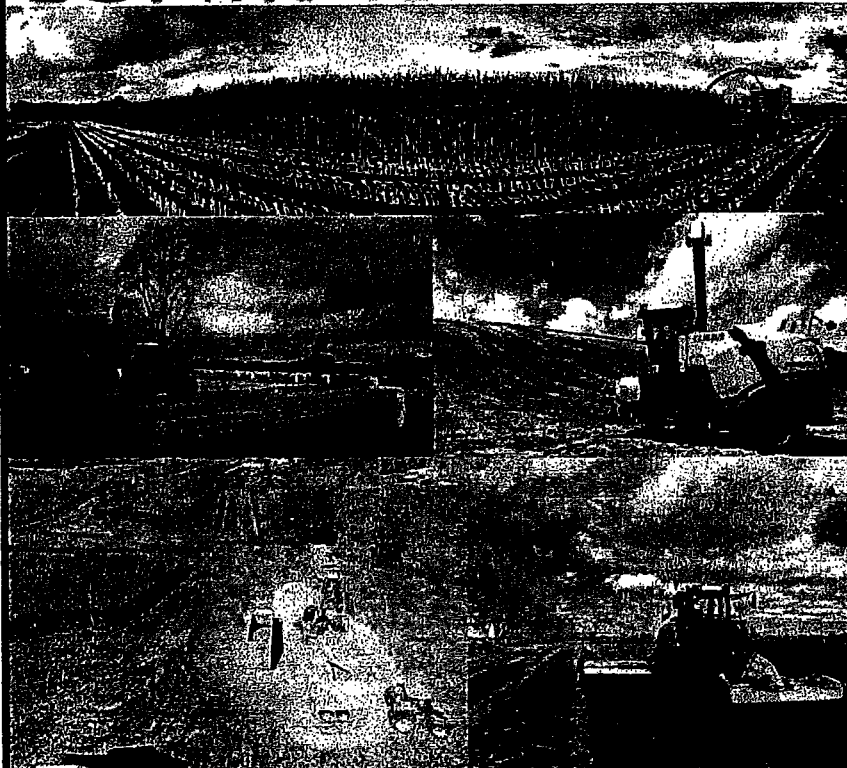
FUEL 24 X 7 PETROL & DIESEL FROM OPT (OUTDOOR PAYMENT TERMINAL)

**EFTPOS - RD1 FARM SOURCE - FARMLANDS - CARDLINK- AMEX -
MASTERCARD- VISA**

FOLLOW US ON FACEBOOK FOR DISCOUNT DAYS AND PROMOTIONAL INFORMATION

**Gull Eureka
1291 Morrinsville Road
R.D.6
HAMILTON
Tel: 07 824 1773**

Walling **CONTRACTING LTD**



For all your:

- **Ground Cultivation**
- **Planting**
- **Re-Grassing**
- **Under Sowing**
- **Grass Silage**
- **Maize Silage**
- **Digger & Spray**
- **Requirements**

Phone Zach: 027 450 0125

EMAIL: walling.contracting.ltd@gmail.com

Dig It Earthworks

EARTHMOVING & EXCAVATION

- House Pad & Driveway Prep
- Driveways
- Section clearing
- Footings & Post Hole Boring
- Landscaping & Lawns
- Farm Maintenance & Races
- Truck & Labour Hire
- Calf/Goat/Pig/Chicken Shed Clearing

CONCRETE LAYING

- House & Garage Pads
- Driveways
- Sheds/Workshops
- Patios
- Footpaths



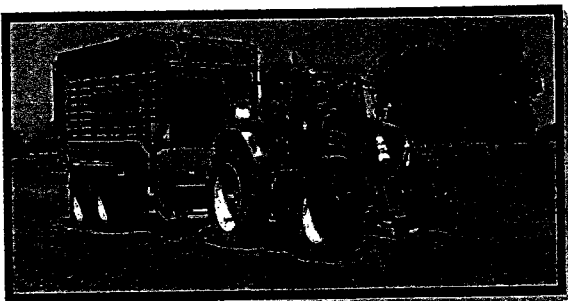
Give Liam a call today for a free quote on 021 02839174



Growing Together



Providing Professional Agricultural Contracting Services



Services Include:

- Baling, Round, Big Square & Conventional
- Spraying
- Grass Silage – Chopper & Loader wagons
- Maize Silage – Cultivations, Planting & Harvesting
- Bulk & Hiab Cartage

Call Jeremy Rothery for inquiries or bookings 027 526 2441

www.jclag.co.nz



CTAS



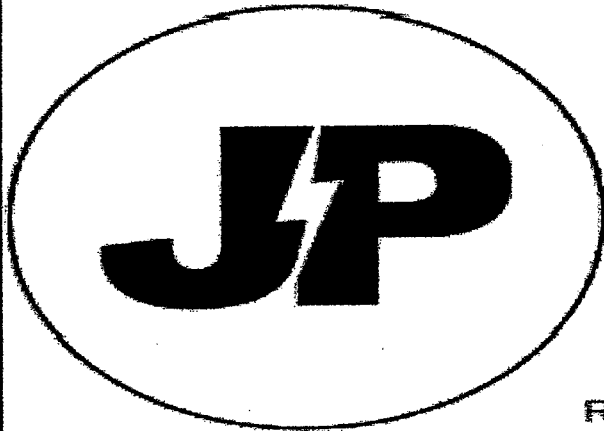
100% NZ Owned and Operated

- TXT and Email Alerts and Reminders
- TXT Shortcodes for your business or club
- Flight Status by TXting your Flight to 8808
- Live Video and Audio Streaming on the Internet

Reminders by TXT and Email

YOUTXT™

www.ctas.nz | sales@ctas.nz | www.youtxt.nz



JP ELECTRICS

EST 2022

JAMES PALMER

REGISTERED ELECTRICIAN

⚡ 027 756 6804

⚡ james@jpelectrics.nz

⚡ www.jpelectrics.nz

Residential | Commercial | Heat Pumps



QUALITY ASSURED
MASTER
ELECTRICIAN

COMPUTERISED BULK SPREADERS LTD

Cartage and Spreading



FERTILISER, LINE, UREA SPECIALIST

Competitive Rates

PETER JONES

027 496 3370

***37 years service in the Morrinsville district ***



161 Morrinsville Road, Hamilton, 3286

Phone: 07 856 4522 Email enquiries@newsteadvets.co.nz

Website: www.newsteadvets.co.nz

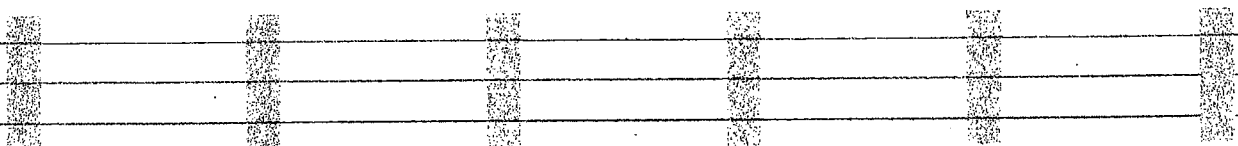
Newstead Vets offer a full range of veterinary services for small animals including:

- * Consultations (by appointment only)
- * Soft Tissue and Orthopaedic Surgery
- * Digital Radiography and Ultrasonography
- * NZVA Microchipping Accredited Practice
- * Nutrition and product Advice
- * Rural location with ample parking
- * Referral to Specialists
- * PennHIP Certified
- * Full Laboratory Service
- * Hospitalisation
- * Cremation Service
- * Convenient Online Shop

G&M FENCING

WAIKATO WIDE

For all your rural, lifestyle and residential fencing needs



Contact Mitch

0278418055

gandmfencingnz@gmail.com

Local Boutique Jeweller

DESIGN | MANUFACTURE | SHOWROOM

- Showroom by appointment only
- Private personal shopping experience
- Repairs and maintenance
- Custom design & manufacturing
- Remodelling old or unworn jewellery
- Unique, one-of-a-kind designs & small collection jewellery
- Independent insurance valuation services
- Wine and cheese shopping experience for small groups



GET IN TOUCH

@erikawatsonjewellery

@ErikaWatsonJewellery

erikawatsonjewellery@gmail.com

WAIKATO SHED C O M P A N Y ✓✓

great sheds, done right!

“Just like Our America’s Cup Champions, our American Barns are built for Endurance, Strength and Timeless Performance!”



A quintessential American Style Barn that fits perfectly into the rural New Zealand landscape

4m Span, 10m Long 4m High

Roof Cladding T Rib New Demin Blue

Roller Doors Cloud

Wall Cladding T Rib Scoria

Also known as **Rural Implement Shed** with Bathroom , is a **Gable** structure with **two Lean To’s** that has been **Bolted** together to **Strong Portal Columns** and **Engineered** to perform/last for 50 years

Our shed features **175 Box Gutters** & **100 Marley White Downpipes**, bigger than normal. Plenty of **Double Glazed Windows** keep the shed warm together with the **Clearlights** let lots of light in

“I really enjoyed working with these clients to deliver a fantastic looking rural shed. If you want something similar or wish to discuss your dream shed, reach out”

Glenn Jones

027 594 8487

glenn@waikatosheds.co.nz



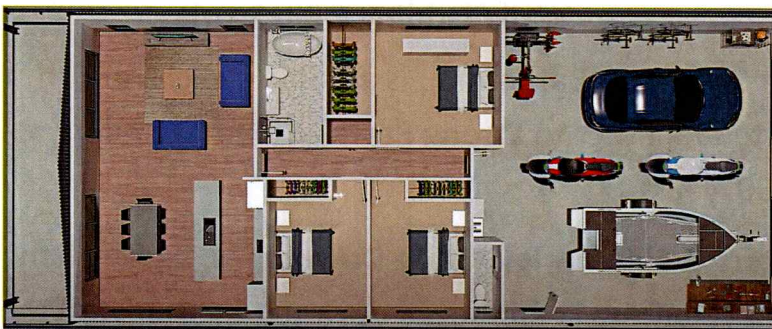
NO COVENANTS—6000sqm Lifestyle Land Package & Shed House **Fabulous Opportunity**

Glenn has teamed up with Aaron Davey from LJ Hooker to share a very special property. Close to Hamilton and Raglan Beach, the listing has unlimited potential to someone who wants to build their dream shed house!

The site has fiber & power at the gate & a Geotech report available. Elevated site, with great views and in a Country Living Zone



We have matched up the property with our Three Bed Coromandel 174 sqm habitable Shed. Beautiful sleek Color Steel Cladding and has a nice extended roof line to create 30 sqm of Fresco outdoor living.



It's got 100 sqm of Garage space, plenty of room for the boat, some toys and a gym

When you walk inside it would look just like a normal house, jibbed, & painted

Check out this cost effective package on our youTube station and all our Shed House options from us building it for you or Kitsets to complete the build yourself

