

# Eureka Express

Vol XLV No. 8 Circ 300  
[www.eurekaexpress.co.nz](http://www.eurekaexpress.co.nz)

August 2024  
[editor@eurekaexpress.co.nz](mailto:editor@eurekaexpress.co.nz)



FRONT COVER SPONSORED BY

**WAIKATO SHED**

COMPANY ✓✓

great sheds, done right!



# Eureka Community Lunch

SUN. SEPTEMBER 8TH, 2024

12:30PM

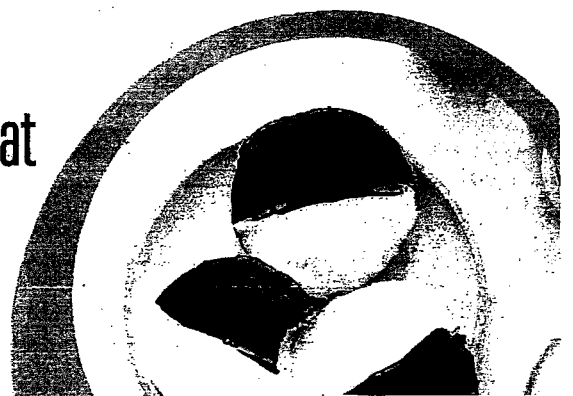
**Come along to the Eureka Hall for a wonderful afternoon of community and Eureka history!**

This annual event is a great way to catch up with others in your community and learn more about our area. Your Mayor and Ward councillors are also coming along and would love to hear any questions & ideas you have for the community. Refreshments are provided, we just ask that you bring two plates of finger food – one savoury and one sweet.

We are also on the lookout for new committee members so we can keep this community space operating, the time commitment is small so if this sounds like you, let us know!

Our annual AGM will take place before the lunch at 11:45, if you would like to attend this too.

**We look forward to seeing you!**



# Ladies a Plate

## Lemon Blueberry Loaf w/ Lemon Glaze

### Ingredients:

- 1½ cups all-purpose flour, plus 1 tablespoon extra
- 1 teaspoon baking powder
- ½ teaspoon salt
- ⅓ cup unsalted butter, softened
- 1 cup granulated sugar
- 2 large eggs
- 2 teaspoons lemon zest
- 2 tablespoons freshly squeezed lemon juice
- ½ cup milk
- 1 cup fresh or frozen blueberries



### Instructions:

Preheat your oven to 350°F (175°C). Grease and flour a 9×5-inch loaf pan.

In a mixing bowl, whisk together the flour, baking powder, and salt. Set aside.

In a separate large bowl, cream together the softened butter and granulated sugar until light and fluffy. Beat in the eggs, one at a time, followed by the lemon zest and lemon juice until well combined. Gradually add the flour mixture to the wet ingredients, alternating with the milk. Begin and end with the flour mixture, mixing just until combined. Toss blueberries in 1 tablespoon of flour. (This step prevents blueberries from dropping downwards to bottom of loaf during baking step.)

Gently fold in the coated blueberries, being careful not to over mix. Pour the batter into the prepared loaf pan and smooth the top with a spatula. Bake for 50-55 minutes, or until a toothpick inserted into the centre comes out clean. Remove from the oven and let the loaf cool in the pan for 10 minutes before transferring it to a wire rack.

### Lemon Glaze:

#### Ingredients:

- 1 cup powdered sugar
- 2-3 tablespoons freshly squeezed lemon juice
- Zest of 1 lemon

In a small bowl, whisk together the powdered sugar, lemon zest, and lemon juice until smooth and glossy. Drizzle the glaze over the cooled Lemon Blueberry Loaf, allowing it to drip down the sides. Let the glaze set for a few minutes before slicing and serving.

## Cheese and Bacon Puffs

- |                               |                             |
|-------------------------------|-----------------------------|
| ½ cup of milk                 | 1 egg                       |
| 2 cups coarsely grated cheese | 2 med onions finely chopped |
| 1 cup self raising flour      | 1 tsp French Mustard        |
| 3 bacon rashers, chopped      |                             |

Combine milk and egg in a large bowl. Add remaining ingredients, mix well. Drop rounded teaspoon of mixture on baking paper lined oven trays. Bake in hot oven 20 mins or until browned, makes about 41. Suitable to freeze.

## **Greetings from the Whites in Eureka Road.**

We first came to Eureka to view the land that our daughter and son-in-law had purchased nearly 25 years ago, little knowing that we would purchase a property just down the road from them twenty years later.

When Colin & I married in Auckland in 1968 we had both spent time and money on overseas trips so we had some saving to do before we could afford a home. We rented a flat in Campbell's Bay, bought a section in Murrays Bay (Nth Shore, Ak), saved hard and 2 ½ years later started building our own home. It was a busy time – we hired builders to do the major work but we arranged all the materials, organized sub-contractors and did the finishing ourselves, all while working at the same time! We shifted in 4 months after the building was started and continued to complete the house and develop the basement and grounds.

By the time we had been in the house for 6 years Colin was getting restless – everything was done and there was no longer challenging work for him to do. So, we decided to shift onto a ten acre block.

Colin had lived in the country in the Bay of Plenty until he was 11 so it was not so strange for him, but I was city born & bred so it was a big step for me. We eventually sold in Murrays Bay and we purchased at Waimauku about 7 km from Muriwai in West Auckland. We spent the next 10 years in Waimauku enjoying a very busy rural life. Our 10 acres was very productive and with a house cow, chickens, beef cattle, some sheep and a large veggie garden and orchard and we (including our two young children) lived cheaply off our land. After a couple of years of this we decided to take a big step – Colin finished full-time work, concentrated on the veneered chessboards he had been making and selling for some time and as well as doing some part-time cleaning and building work, cared for our livestock and land. We also tried other ventures, growing garlic, freesias and flax, farmed goats and rabbits. I worked part-time but this meant that one of us was always available to be with the children. We were also very actively involved in the community – Girls' Brigade, Scouts, Playcentre, Primary School and Small Landowners Association.

Colin still had a hankering to have a bigger farm so in October 1987, we sold in Waimauku and purchased a 100-acre farm in Te Kopuru, just out of Dargaville in Northland. And there we stayed for the next 31 years. Colin worked full-time on the farm for a while and then for many years worked part-time off the farm as well. To start with we had beef cattle and later a herd of goats. For a time, we had an additional 75 acres and we raised dairy/beef calves and grazed replacement dairy heifers. Colin was involved in Scouts, Dargaville Gardens, Southern Rugby Club, the Northland Field Days and was caretaker at Redhill Camp. He also played a big part in establishing the Dargaville Menz Shed. I worked fulltime mainly as an accountancy clerk and was also a Girls' Brigade Leader, involved in the Methodist Church and I sewed most of the children's and my own clothes, and so, along with family life I was also kept pretty busy.

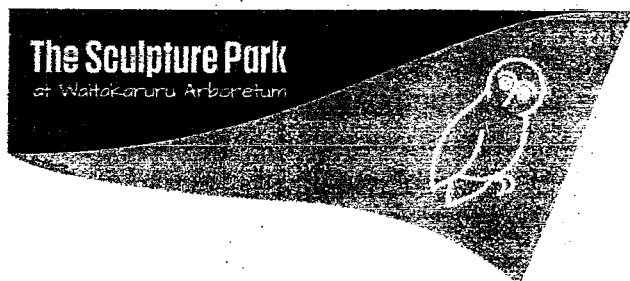
Meanwhile the children grew up and went away to university - Alison to Waikato to train as a teacher and Craig to Auckland to study mechanical engineering. They both were ready for, and enjoyed life at university and it was there that they met their partners.

We enjoyed our life in Dargaville, had great friends, but it was not easy to see our children and their families – and we were aware that there were times that, as we were getting older, it would be good to have family nearer. Had the time come to shift nearer to them? With Alison & her family living on a lifestyle block in Eureka it was in this area that we started to search.

And from there things happened pretty rapidly. We looked at a few places in the area and then discovered a 1½ acre property just 400 metres down the road from Alison & David that ticked all the boxes. They assured us that it wasn't too close to them and it was all go from there! Fortunately, the Eureka property had a very big shed and a lot of farm gear came with us! But there was still an awful lot of stuff to sort and get rid of!

And so, we arrived in Eureka in January 2019. Did we make the right decision? In hindsight the answer is definitely yes. It is wonderful to see so much of our family and this area has so much to offer, we still have a rural lifestyle and yet have the facilities of Hamilton and other areas readily available. We are members of the Morrinsville Probus Club, Colin has joined Morrinsville Menz Shed and I enjoy a weekly meeting of ladies making craft items to sell at the St Stephens Christmas Festival at Tamahere as well as secretary for Waikato Girls' Brigade. Not long after arriving in Eureka we joined the Eureka Hall Committee and have enjoyed getting to know locals in this way. I hope you are planning to come along to the Eureka Hall on Sunday 8<sup>th</sup> September and meet with your neighbours in Eureka – see you there!

Dacia White



We are all looking forward to spring! There are many reasons to come to the park in September: events, workshops or just for a get-together with friends.

- The Gallery area near the café opens the season with an exhibition by Harley Moore starting on Father's Day 1<sup>st</sup> September
- We have a great pizza lunch ready for the family on Father's Day. Just book online at <https://www.sculpturepark.co.nz/events/fathers-day-lunch>
- Come along at 2pm on Saturday, 7th September hear Judy talk about her native bird rescue work and witness the next ruru to take flight here. Tickets are only \$25/person which will contribute to Judy's efforts to save our native species. Join us when Judy Fentress releases a rehabilitated ruru into the park. Book at <https://www.sculpturepark.co.nz/events/ruru-takes-flight-1>
- Get inspired to write with a Creative Writing Workshop on Sunday, 8<sup>th</sup> September
- We celebrate the wonderful Awanui Cherries in full bloom, such a great feature of Tauwhare, with *Delight: Blossom in the Park* starting on the 21<sup>st</sup> September.



The Sculpture Park  
**CREATIVE WRITING WORKSHOP**  
 with Dr. Aimee Anderson-O'Connor  
 Sunday 8th September  
 11am to 1pm  
 \$35 pp  
 more info & book at [www.sculpturepark.co.nz](http://www.sculpturepark.co.nz)



## Better Internet Is Coming to Eureka

Local internet provider, Lightwire, has been delivering wireless internet into Eureka for almost 20 years, and wants to continue to invest in the area, bringing city speeds to your home via fibre technology. As seen in the image below, the first stage of the network build covers homes on Appleton Ln, Masters Rd, a part of Eureka Rd and some of Hunter Rd. It will be a private network - fully owned and operated by Lightwire. That means it will build and install the fibre to your home and provide you with the internet plan.

In order for Lightwire to make this investment feasible, it needs to gauge intent to sign up from residents within this boundary map. If 75% (which is about 42 homes within the boundary map) jump on board with getting fibre to their home, Lightwire will happily commission the network build. Even better, the build and install fee is free for residents (usually valued at \$2000).

Okay, so what's the big deal about fibre?

Fibre has speed profiles of 200/200Mbps, little interference and low latency. This means streaming, gaming, video calling and remote working all at once will become the norm. Fibre is a superior service to most other internet options, life changing for most and an asset to your property for resell value. Lightwire have two Rural Fibre plans on offer, and they are both on an open term, so you aren't locked into a contract. For comparison, a VDSL connection might get 10-40Mbps download, but fibre gets over 200Mbps...

Chat to your neighbours, or simply give Lightwire a call for more information about fibre by ringing 0800 12 13 14 or email [sales@lightwire.co.nz](mailto:sales@lightwire.co.nz). You can check out our rural fibre page for more info at [Lightwire.co.nz/rural-fibre](http://Lightwire.co.nz/rural-fibre).



# Local man Wojtek Czyz makes the NZ Paralympic team

Wojtek is to be New Zealand's first ever badminton player in the Paralympics in Paris this month. He was introduced to badminton when young and it was just a hobby for him.

Three years ago, when he heard it was in the Paralympic programme, he approached Badminton New Zealand to be assessed to play. After beating other Para badminton players

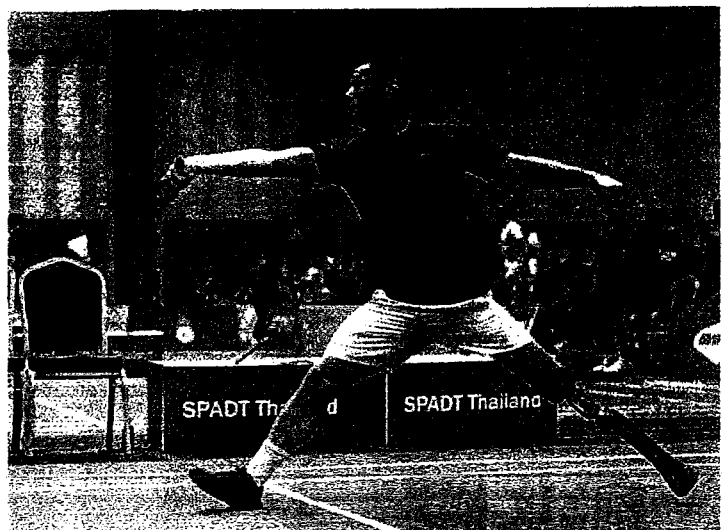


in New Zealand, Wojtek decided to pour everything into competing internationally, with the goal of qualifying for the Paris Games. Starting from scratch, he skyrocketed in rankings to become the 14<sup>th</sup> best player globally within just two years (now ranked no.8). He played his first international game for NZ in Dubai in 2022, with his best performance being a quarterfinal finish at the 2023 Japan Para Badminton International.

Wojtek was an up-and-coming football player but in his last football club game before taking up his professional contract, a goalkeeper jumped on his leg and injured him which resulted in his leg having to be amputated. This didn't hold him back and only six months after his amputation he was already a German champion in 100 metres and long jump. Two years later he achieved 3 gold medals at the 2004 Paralympic Games in Athens. Wojtek carried on representing Germany at three Paralympics in track and field, collecting four gold, a silver and two bronze medals. He continued his sporting career as a professional track and field athlete for over 12 years.

After his sports career Wojtek sailed around the world for 5 years with his wife Elena (a former Italian high jump champion) to help amputees to get prosthetics for free and teach them how to walk. They built 90 prosthetic legs on board their boat and donated them to people without money.

Just before Covid hit, Wojtek, Elena and their son arrived in New Zealand and fell in love with the country and people. They decided to settle down here in Eureka and have set up a Manuka Honey company. It was about this time that Wojtek decided to pursue his badminton project. We wish him all the best for the 2024 Paralympic Games in Paris.



# TAMAHERE-WOODLANDS COUNCILLORS' UPDATE AUGUST 2024

## Share your ideas for your neighbourhood facilities and parks

Waikato District Council is examining its strategies and plans for the Council-owned public spaces and community facilities that you use, whether you are playing sports, walking your dog or attending an event at your local hall.

It is running a "pre-consultation" with the community to help re-shape the Neighbourhood Parks Reserve Management Plan and the Sports Park Reserve Management Plan, and to develop a Community Facilities Strategy. The neighbourhood reserves and sports parks management plans were last prepared in 2015 and 2016 and need to be updated. The Community Facilities Strategy will be a guidance document that builds off your expectations about built spaces for public use including community halls, sports and leisure facilities, libraries and public toilets. It will guide strategy around investment and levels of service.

The Council wants to know what you like or dislike about your local facilities, and any ideas you have about the future of the amenities in your area. You can either use the interactive map on the Council's website, or download a submission form to write down your ideas and then email the completed form to [reserve.planning@waidc.govt.nz](mailto:reserve.planning@waidc.govt.nz).

The closing date for submissions is Friday 6 September. For more information go to [www.waikatodistrict.govt.nz/say-it](http://www.waikatodistrict.govt.nz/say-it).



## Applications are open for the Creative Communities Fund

The Creative Communities Fund is aimed at supporting art activities that celebrate the uniqueness of the Waikato district, its cultural traditions and diversity, including Toi Māori. Its goal is to increase participation from the local community in the arts sector and encourage young people to participate in local arts. 'Arts' is broadly defined to mean all forms of creative and interpretative expression. Individuals and groups can apply for projects aimed to benefit local communities that will take place within a year of funding being granted. The deadline for applications is 5pm Thursday 5 September. For more information go to [www.waikatodistrict.govt.nz/funding](http://www.waikatodistrict.govt.nz/funding).

## Slow Fashion 'SEWtember'

More than 533 tonnes of fabric waste end up in our district's landfill each year – nearly half a kilogram of waste fabric per household per week - so we're on a mission to combat the negative effects of fast fashion this 'SEWtember'. We've partnered with community groups and volunteers to run a range of events across the district to help you love, mend and alter the clothes you already have with a view to minimise our landfill waste.





### **'Sewtember' events in Tamahere-Woodlands Ward**

In Tamahere-Woodlands Ward you can get tips on how to develop your own sustainable style at an event at Gordonton Hall on 11 September (7-9pm), join an online wardrobe tour on Sep 16 (7.30-8.30pm), or head down to Matangi Hall for a Friday night 'Sewcial' on 20 September (6-9pm) and get creative with repairing and refashioning. For more info and to book your place go to [www.waikatodistrict.govt.nz/sewtember](http://www.waikatodistrict.govt.nz/sewtember)

### **SH26 roadworks planned**

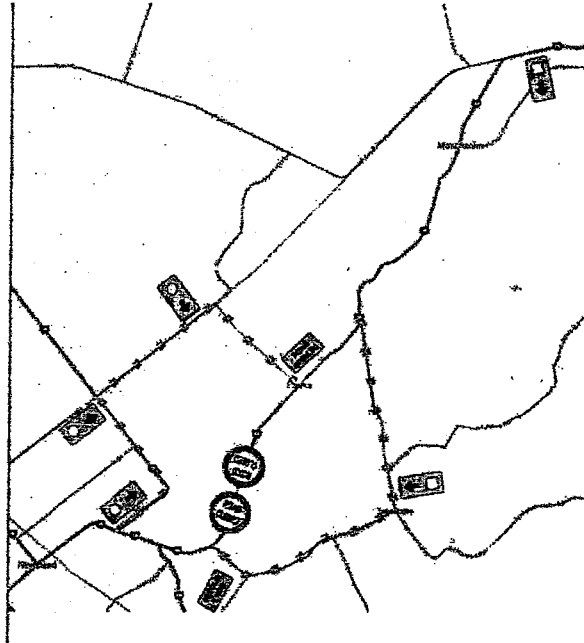
NZTA will be undertaking roadworks on SH26 just south of Eureka for a month starting in mid-September.

A full road closure is planned and there are two detour routes on local district roads:

- Detour 1: Tauwhare Rd and Platt Rd
- Detour 2: Eureka Rd, Holland Rd and Marshmeadow Rd (SH1B)

Watch for NZTA signage closer to the time.

See the detours on the map here:



### **Maaori Wards**

Waikato District Council has voted to retain its Maaori Wards for the next triennium, and will hold a binding referendum at the next local body elections in 2025 to determine whether Maaori Wards will be retained from 2028 onwards.

Maaori represent 26% of the district's population, and more than 15,000 Maaori have chosen to be on the Maaori electoral roll. Two Maaori Wards covering half the district each were established during the district's Referendum Review in 2021. In 2022 Cr Tilly Turner was elected to represent the Maaori community in Tai Runga Takiwaa Maaori Ward covering the southern half of the district.

### **Contact your Tamahere-Woodlands Councillors:**



Crystal Beavis, mob 0275 957 927, email [crystal.beavis@waidc.govt.nz](mailto:crystal.beavis@waidc.govt.nz)  
Mike Keir, mob 027 449 3012, email [mike.keir@waidc.govt.nz](mailto:mike.keir@waidc.govt.nz)



## HALL UPDATE

This month I would like to let you know how the Hall committee is made up and their roles.

**Chairperson** Is the contact person for the Council, ensures all correspondence is handled, arranges and leads meetings, and generally oversees everything.

**Treasurer** Ensures the financial accounts are kept up to date, pays all accounts, receives all money in for hall hire etc. This is all done through Xero accounting system.

**Secretary** Currently we don't have one, but the role would be to take minutes from the meetings and follow up with any tasks from the Chairperson. Usually, the secretary has been the person who takes the bookings, sends out the contracts and organises the key pick up. Also to order cleaning supplies as required. This role could be undertaken by someone separate. It doesn't have to be the secretary.

**Committee members** These people make up the numbers of the committee and pick up tasks as required. These tasks could be small repairs, arranging for maintenance jobs to be carried out, anything that they can do. We do need a quorum of about 6 for decision making.

**Cleaner** The cleaner isn't on the committee now; however, she is informed of all bookings and any cleaning jobs that are required to keep the hall in a clean and presentable state for hire. Also to ensure there is enough cleaning product and toilet paper.

This would be an ideal committee. However presently the chairperson is doing the work of the Chairperson, and secretary. The more people we have on the committee would mean the work is shared around more. The committee only meet about 5 times per year, unless there is a big project on. Most of the contact is done via email. The personal time the committee would put in would be approximately 1 hour per month, except for the treasurer, cleaner and the secretary or the person taking the bookings these can be a bit more variable due to the number of bookings. The current committee is going to change as people are resigning or moving away. The hall belongs to the community, it is a huge asset, and a new committee would ensure that hall stays in the community.

If you would like to join the committee, please contact us or come along to the AGM on the 8<sup>th</sup> Sept. The hall is over 50 years old and has had very strong committees who have clearly maintained the hall we need you to help us keep up the important work for Eureka.

Contact Gayle Orr for any bookings or any other enquiries. 0272917150

Usage	Residents	Non - Residents
Hall per day	\$ 50	\$100
Social function	\$150 - \$300	\$250 - \$500
Children's party	\$30	\$75
Bond	\$400 Secretary's Discretion	\$500 Secretary's discretion

### EUREKA EXPRESS - ADVERTISING RATES 2023

Classified adverts Free		
Small business advert x 10 insertions	\$10 per month	\$100 per year
Third of a page x 10 insertions	\$15 per month	\$150 per year
Half of a page x 10 insertions	\$20 per month	\$200 per year

For all articles, advertisements, photos, ideas and suggestions, please use the express email address. The Express is printed Feb - Nov each year. All articles should be sent to the Editor by the 20th of each month.

[editor@eurekaexpress.co.nz](mailto:editor@eurekaexpress.co.nz)

**JUSTICE OF THE PEACE FOR EUREKA**

JP. Kevin Deane Please call or text to arrange an appointment.

Kevin Deane JP m 021 970902 , Kevin is located in Eureka.

**DONATIONS ACCEPTED**

We are all aware that the cost of everything is going up all the time. The printing of the Express is also costing more. If you would like to make a small donation, we would be very grateful. We will send you a receipt (which is not tax deductible as we are not registered as a Charitable Trust), for your donation so please put your name as a reference. Our bank account number is 03-1559-0042660-00. The name of the account is Eureka Express. We would also like to thank everyone who puts their loose change in the box at the Gull Station, all donations are gratefully received and help towards the rising costs. A huge thank you for the donations we have received.

\*\*\*\*\*

**OUR SINCERE CONDOLENCES**

We send our deepest condolences to Scott Meredith on Appleton Lane, for the sad loss of his Mum Lyn Meredith of Morrinsville on 5<sup>th</sup> August. Lyn was the mother-in-law of Alison and Nana to Cameron and Alex.

Condolences are also sent to Colin and Glenys Middlemiss of Hooper Road for the sad loss of Colins Sister Carol Hapi.

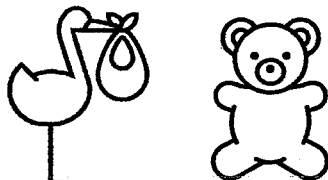
**NEW ARRIVAL**

Congratulations to Bryce Taylor & Alix Stevens of Eureka Road, on the birth of their daughter Hilary Victoria Taylor, born 16th May at home.



\*\*\*\*\*

Congratulations to Emme and Marcelo Kokura on the birth of their daughter Raphaela. Emme is the granddaughter of Diane Hinton of Eureka Road, and Raphaela is Dianes great granddaughter. Raphaela was born in March.



## TAUWHARE INDOOR BOWLS NEWSLETTER

Welcome to the August newsletter from the Tauwhare Indoor Bowling Club. It is never too late in the season to come along to the Tauwhare Indoor bowling club and try the game of bowls. If you are new to the area and have played bowls before or have never played bowls but would like to give it a try, then come along to the Tauwhare Hall on a Thursday evening. Our numbers have been very low the last few of weeks but hope they will pick up again. We have members within the club that are happy to introduce/help you get started. We are a friendly, sociable club and there is always lots of laughter and banter. We need new members in the hope that our club will survive. It was encouraging the last couple of weeks to have some new people come along. You do not need to bring anything along – just wear flat soled shoes. The evening usually finishes between 9.30 and 10pm.

We would appreciate you being there by 7.20pm ready for a 7.30pm start.

### Recent Results: -

- 25.07.24 Club Night  
Winning team – Bev Meads, Lockie Verner and Alison Neal  
Runner up team – John Cottle, Glenda Goodare and Karen McNally,
- 01.08.24 Esme Pope Memorial – Handicap Singles  
Winner – Adam McNickle  
Runner Up – Darron Cutler
- 08.08.24 Club Night  
Winning team – Bev Meads, Alison Neal and Val  
Runner up team – Jim Arnold, Lockie Verner and Adam McNickle
- 13.08.24 Erin Rosebowl challenge against Matangi.  
We put up a brave fight, but it was not good enough. Matangi won.

### Programme to the end of the season: -

- 22.08.24 Club Night  
29.08.24 Final Points Night  
05.09.24 Club Night  
12.09.24 Mulholland Trophy  
19.09.24 President and Vice President Night  
26.09.24 AGM and Prizegiving  
17.10.24 Christmas Tournament

Our aim going forward is to make bowls a fun social evening so come along and let's make that happen.

For more information please contact - Bev Meads 021 172 7822 or Jim & Rosalie Arnold 07 887 4832 or John Cottle 07 824 0992 or 027 524 0992

\*\*\*\*\*

### BOOTLEG BREWERY.

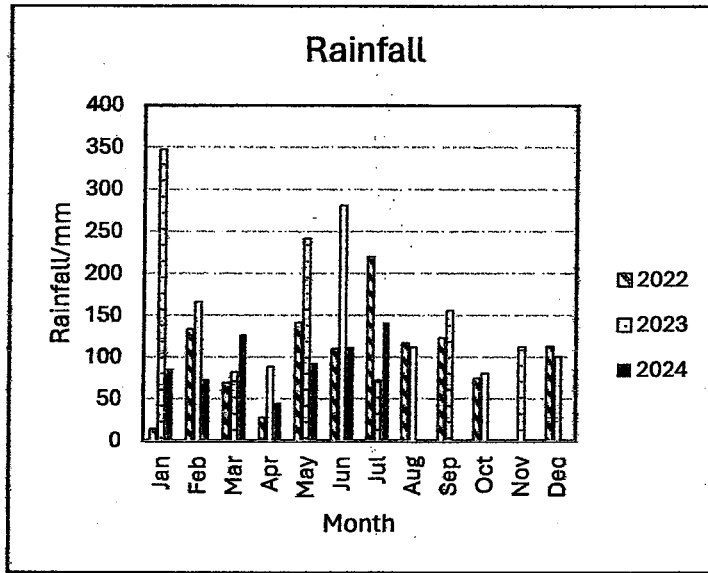
Bootleg Brewery is located in the Matangi Dairy factory round the back. You'll find brews of all kinds from lagers, ales, stouts, Belgians, sours and IPAs. It is a mix of community pub and craft brewery, so there's also gins, whiskeys and wines too. Bootleg is open Thursday - Sunday and is dog friendly. A variety of food trucks visit on Friday to Sunday, often has live music on Sundays, and do takeaway beers. Bootleg was put on the NZ brewery map when Apehanger IPA won champion Strong Ale in 2017, there's no shortage of good beer here.

Contact Fraser 0274910867 for more information.



**JULY WEATHER**

Weather	July 2024	July 2023
Rainfall total	141.5mm	72 mm
Rain Total for year	677.5mm	1278 mm
Rainy days	12	15
Most daily rainfall	40 mm	18 mm
Highest wind speed	41.8km/hr	56.2km/hr
Temp high	15.7 °C	15.9 °C
Temp low	-2.6 °C	-1.3 °C



# LOCAL RURAL AGENT SERVICING YOUR LOCAL AREA



*Kevin* **DEANE**  
M 021 970 902

**Harcourts**

Licensed Agent FBA 2023

## International Week of the Deaf: Monday, 23rd September to 29th September 2024

The theme for 2024 is -Sign Up for Sign Language Rights

**Monday:** International Day of the Sign Language. Sign Up for Sign Language Rights

Given the 20th anniversary of the CRPD in 2026, we are striving towards a better implementation of the CRPD at the national level through the linguistic human rights of D/deaf people. Sign up for Sign Language rights by working with your local and national associations to announce the achievement of a concrete goal for D/deaf communities today.

**Tuesday:** Inclusive Education

We advocate for quality multilingual, inclusive education that includes D/deaf learners through national sign languages. We encourage individuals, organisations, and governments to support Sign Language rights by signing our Declaration on the Rights of Deaf Children! <https://wfdeaf.org/rightsdeafchildren/>

**Wednesday:** Sign Language Advocacy

Encourage everyone to actively advocate for the rights of deaf individuals and the official recognition of national sign languages. Promote your national sign languages in public arenas to sign up for sign language rights.

<https://wfdeaf.org/guidelinesaslr/>

**Thursday:** Building Resilient Deaf Communities

We are building the capacity of D/deaf communities on emergency preparedness and response to mitigate disaster risks and reduce D/deaf communities' vulnerability in the face of disasters. Sign up for sign language rights by demonstrating partnerships between D/deaf communities and emergency responders.

**Friday:** Diversity in Deaf Communities

Embracing diversity in deaf communities, where every deaf individual with intersecting identities is recognised. Sign up for sign language rights by highlighting the many intersectional identities of our diverse D/deaf communities. Strengthen our communities today!

**Saturday:** Deaf Cultural Celebrations

We are celebrating the rich cultural heritage of the deaf communities through our sign languages and cultures. Deaf Culture involves the behaviours, traditions, beliefs, values, history, humour, and art that exist within Deaf communities. We are proud of our linguistic and cultural identities. Sign up for Sign Language rights by hosting an event today that demonstrates the rich cultures of our D/deaf communities.

**Sunday:** Investing in the Future of Deaf Communities

Let's support D/deaf children and their families' connections with deaf communities to ensure early exposure to national sign languages and access to language-rich environments. Sign up for Sign Language Rights by sharing a video on social media of your vision for the future of our D/deaf communities.

Jean

.....

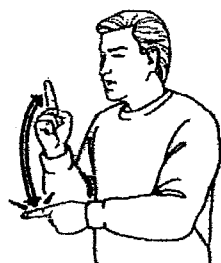
For anyone that is interested. On 9<sup>th</sup> November I am thinking of having a community garage sale at the hall. If you think you could be interested or want to earn a bit of money for Christmas, I am just letting you know the date.

Gayle Orr



emergency

*ohotata*



emergency

*ohotata*



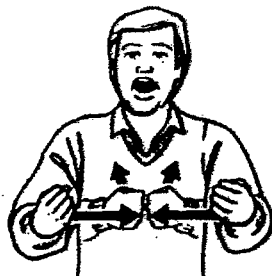
mobile phone,  
text (mobile  
phone)

*waea pūkoro, pātuhi*



mobile phone

*waea pūkoro*



accident,  
collide

*aituā, tuki*



collide,  
collision

*tuki, tukitanga*



earthquake

*rū whenua*



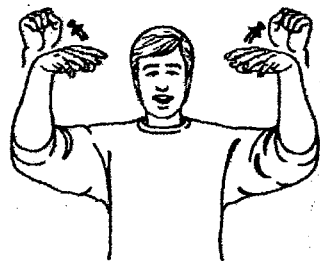
flood

*waipuke*



flood

*waipuke*



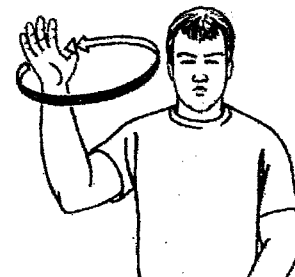
power cut

*pōroa te hiko,  
tapahia te hiko*



medical

*oranga tinana*



wind

*hau*

## Tis the season

Hello again from all of us at Tis the Season  
Spring is here – trees are blossoming and lambs are everywhere. What better time to be enjoying stitching and knitting – we have a SALES table with yarn at 25% off – and plenty of lovely fabric to inspire you with new projects. If you are interested in classes come in and put your name on our emailing list so you will automatically receive the programme each term . The classes are popular and fill up quickly. If you are new to handcraft and want to begin here is the place to start – we can chat and help you on your way.



Below we have a token for you to cut out and bring in when visiting our shop - this will give you a “\*lucky dip” prize in store.  
We look forward to seeing you soon.



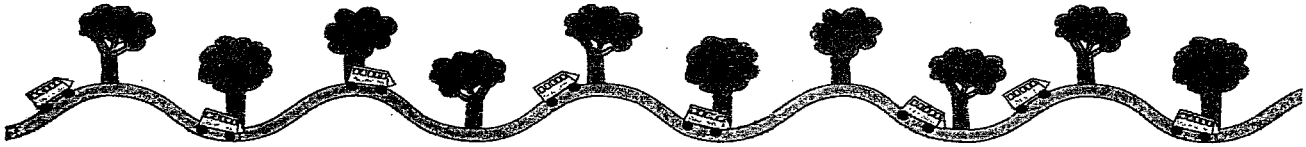
### Welcome to Tis the Season

Matangi Dairy Company complex  
452 Tauwhare Road  
MATANGI

This token entitles you to one instore  
LUCKY DIP prize

\*Valid between 1<sup>st</sup> and 30<sup>th</sup> September 2024 – one voucher per person





# Motumaoho School

2101 State Highway 26, RD2 Morrinsville 3372 | [office@motumaoho.school.nz](mailto:office@motumaoho.school.nz) | p. 07 8897597

August, Term 3 – 2024

## Olympic Ambassador Visit - Brooke Neal

Learning opportunities come in different ways and sometimes it involves inviting an expert to visit us here at our school. Mrs Baptist requested an ambassador visit through the NZOC Olympic Education programme, so....



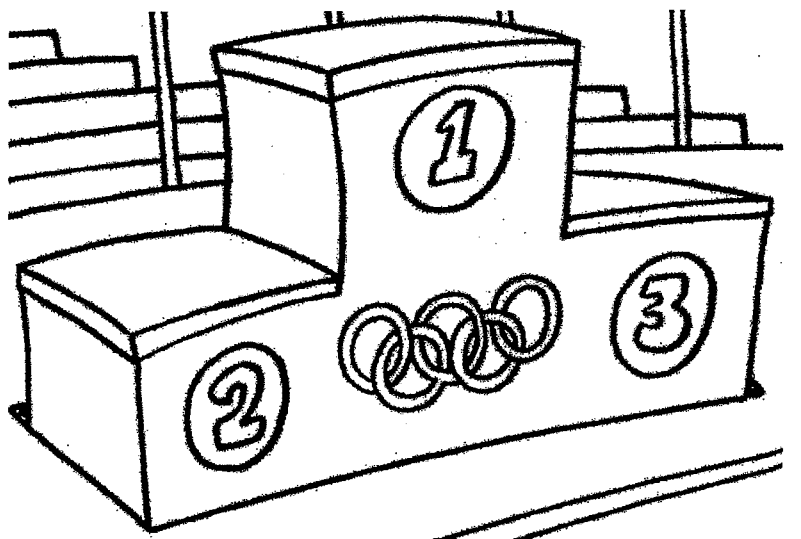
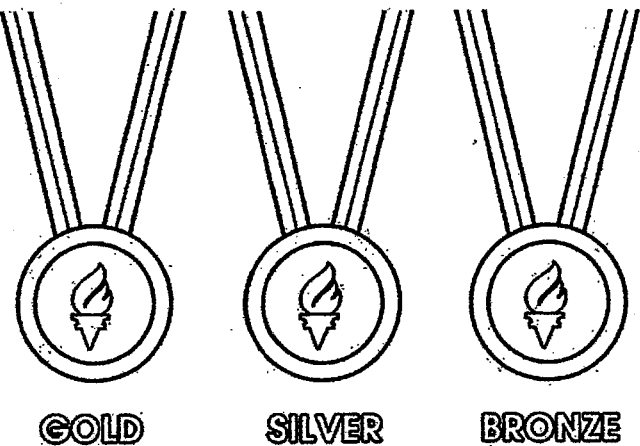
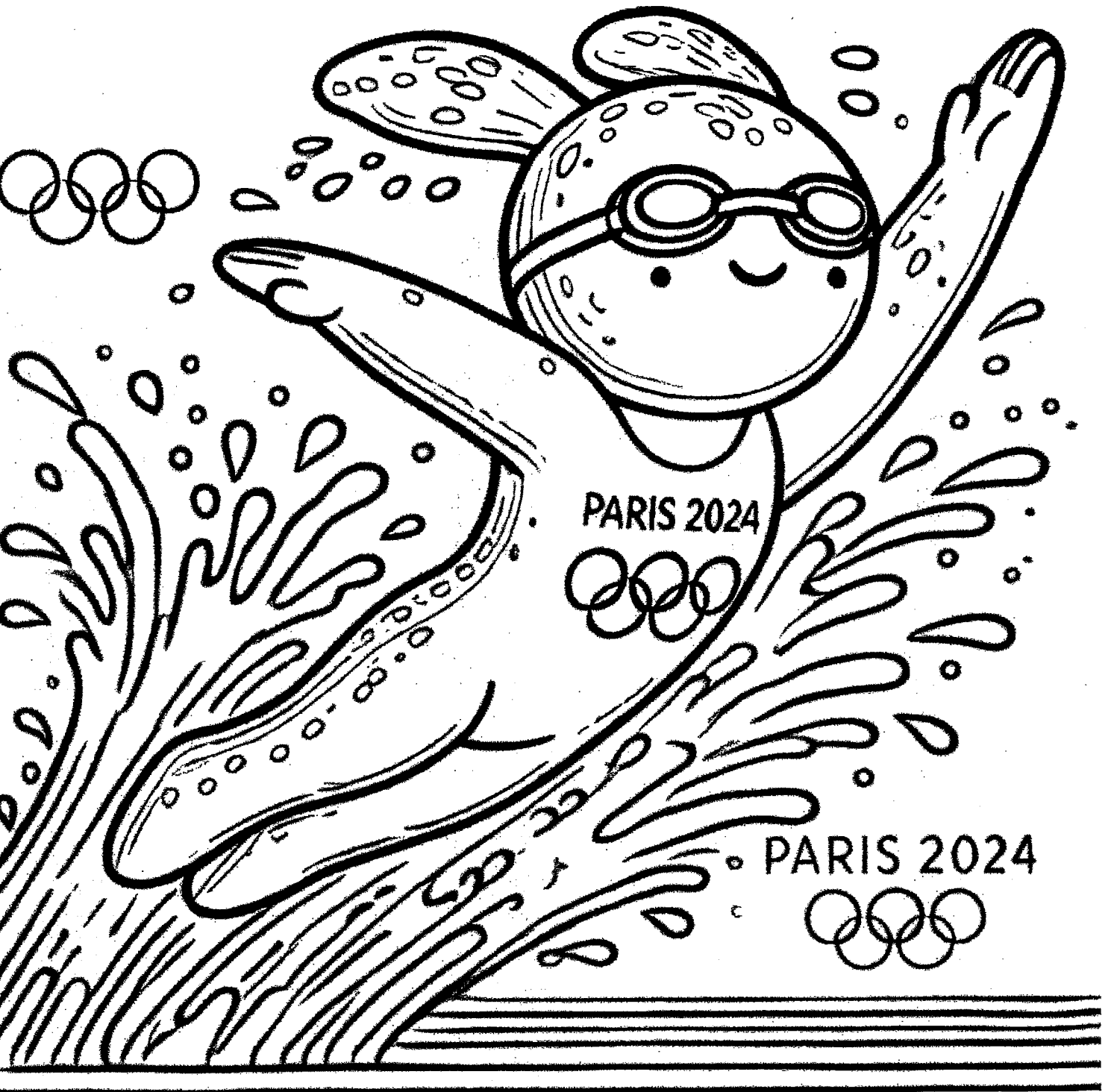
On Wednesday, 7 August Room Tūi welcomed **Brooke Neal** to our school. She is an ex-Black Stick player, Olympian and Commonwealth Games Champion. She talked about her hockey journey, working through tricky times and celebrating the good. She had to work very hard for her achievements. As a very tall and sometimes clumsy child, she often had to sit on the bench while her friends were on the field. Her mum encouraged her to write her goal down and in 2016 it became true

as she represented New Zealand at the Rio Olympics. One thing Brooke does to help her achieve is that she changes what the voice (coach), that we all have in our heads, is saying. She told Room Tūi that everyone can change that voice to be positive rather than negative. When she hears that voice talk negatively to her, she changes it to:



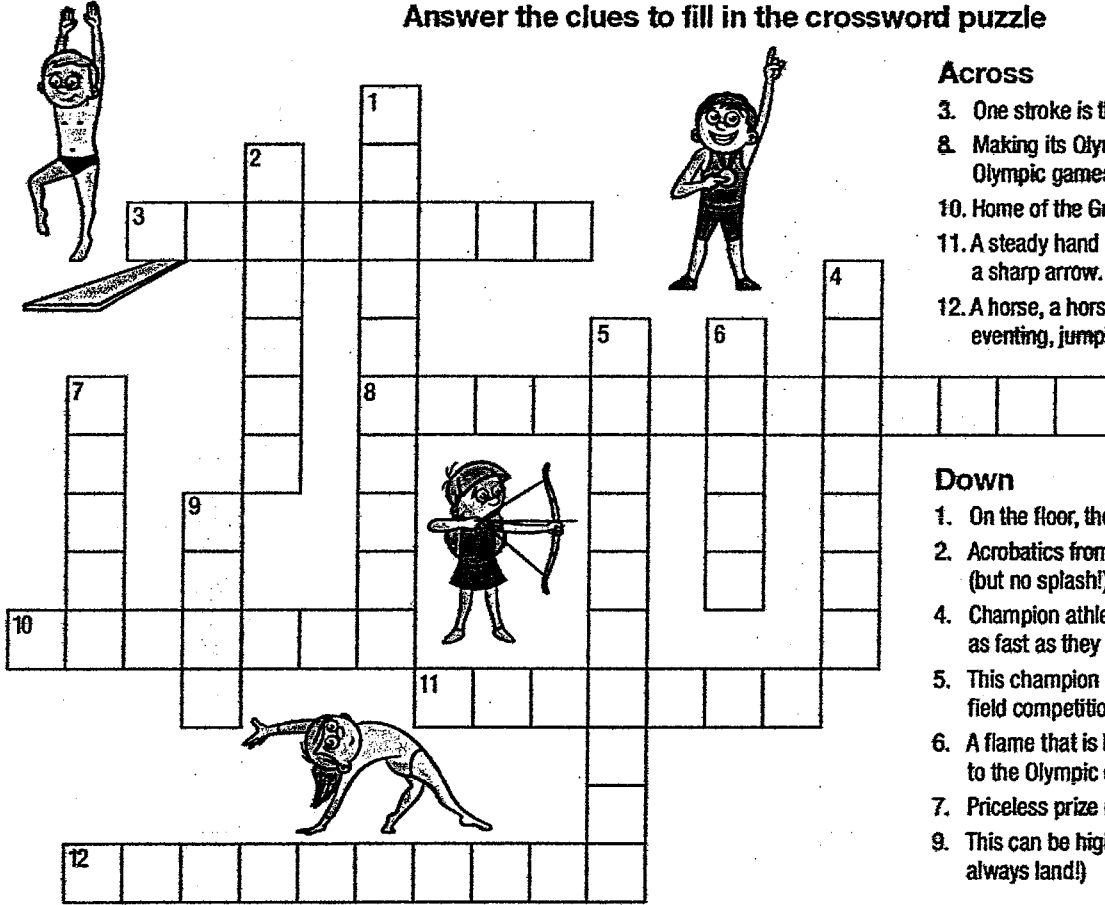
*Be brave! Be confident! You can do it!*





# Olympic Games Crossword

Answer the clues to fill in the crossword puzzle



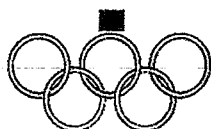
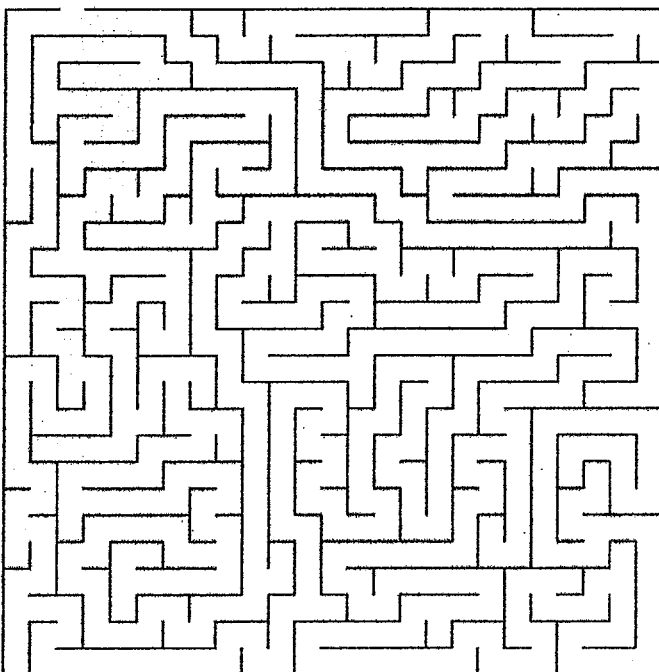
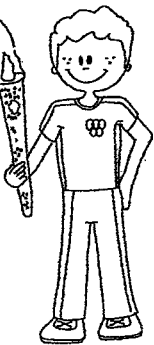
## Across

3. One stroke is the crawl, but it's not slow at all.
8. Making its Olympic debut at the Tokyo Olympic games.
10. Home of the Greek god, Zeus: Mount...
11. A steady hand and a sharp eye to shoot a sharp arrow.
12. A horse, a horse! For dressage, eventing, jumping.

## Down

1. On the floor, the vault, the bars – and more!
2. Acrobatics from a height into water (but no splash!)
4. Champion athletes must run and jump as fast as they can.
5. This champion must win seven track and field competitions.
6. A flame that is borne across the world to the Olympic country.
7. Priceless prize of gold, silver or bronze.
9. This can be high or long (but you always land!)

Can you guide the torch bearer through the maze to the Olympic Stadium?



heptathlon, torch, medal, jump  
Down – gymnastics, diving, hurdles,  
Olympus, archery, equestrian  
Across – swimming, skateboarding

s	g	y	m	n	a	s	t	i	c	s	a	r	s	s
e	p	o	t	e	s	a	u	r	b	o	l	y	r	
s	u	a	o	r	o	g	p	i	d	b	n	l	i	
w	e	t	d	m	n	g	n	a	y	o	l	a	f	c
i	j	h	r	a	t	n	d	i	s	x	n	b	r	s
g	h	l	s	r	r	i	e	e	c	i	n	t	e	n
n	u	e	o	a	v	m	q	u	i	n	c	o	t	a
i	o	t	d	t	o	m	a	r	a	g	e	o	n	p
l	t	i	l	h	t	i	c	s	e	c	n	f	u	p
c	e	c	u	o	r	w	t	t	u	b	t	h	b	e
y	r	s	r	n	g	s	n	f	l	y	r	a	n	r
c	s	a	i	l	i	n	g	a	a	t	s	l	u	g
f	n	a	i	l	u	o	l	h	o	c	k	e	y	s

- |           |            |
|-----------|------------|
| athletics | fencing    |
| swimming  | cycling    |
| marathon  | gymnastics |
| football  | boxing     |
| hockey    | sailing    |



## Gardening Tips

The best time to sow most warm season seeds is 6-8 weeks before the last frost day. This is usually Labour weekend (October)

Planting your own seeds can be rewarding and fun. There can be many pitfalls, but you learn from them. Things like lettuce, courgettes and basil don't like soggy feet. By adding a little vermiculate/or perlite or similar to the seed mix you are using it encourages drainage and helps the plant in the germination stage.

Knowing when to water is a big thing too. Pick up the tray and see if it feels heavy or light. Heavy trays are usually well watered and light trays need water. Also don't water from the top only. Seed trays need a good sit in water and soaking- frequency of that depends on where the seeds are and how fast things dry out. Top watering doesn't always get to the bottom of the seed tray and doesn't encourage roots to go down to find moisture. 20-30 minute soak is enough then pull them out to allow to drain. Seed raising mix is also important. It doesn't have to be expensive or top of line stuff, but it does need to be fine in texture and not full of bigish bits of wood chips or stone.

### **Take care with potting mix and seed raising mix**

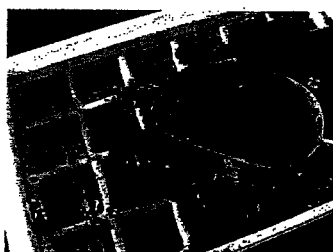
Always wear gloves and a mask securely

Open the bag carefully and direct away from your face

Keep the product damp to reduce airborne particles such as dust, and avoid creating dust when cleaning up.

Wash your hand after handling

Water gardens, soil mixes and potted plants gently, using a low-pressure hose or watering can



## FRESH APPLES & PEARS



### NEWSTEAD ORCHARD

552 Morrinsville Road

Open Tues—Sat  
Seasonal  
W J McMiken & Co  
Morrinsville Road  
Tel. 856 4478

## HAIRFIELDS

HAIR DESIGN  
95 HOOPER ROAD  
Sharon Laurent  
Full salon facility in Eureka  
Total hair care professional  
and many years experience  
Agent for Nutrimetics

Open Tuesday to Thursday  
Late nights Tues/Thurs  
Tel. 8241712  
or 027 280 5978



## EUREKA POULTRY FARM

13 Hooper Road  
Ph 824 1762  
NIC & MARIA STOLWYK  
Hobby Hens



Young pullets from  
5 weeks to point-of-lay  
Great for lifestylers  
Bagged up chook manure  
Hours Mon-Sat 8-6

## LAWNMOWING & GARDENING SERVICES

Professional lawn and garden care  
services



Alex & Sharyn Macdonald

For free no-obligation quote:

Phone 027 479 7282

or 027 308 6781

macdonaldmowing@gmail.com

www.lawnandgradenservices.co.nz

Residential—Rural—Commercial

Mowing—Fertilizing—Weeding

## TRADESMAN PAINTER DECORATOR

Thorough Preparation  
Premium Materials.  
Skilled Application

Phone Tere McConnell.  
021543743



**Servicing and installation  
on all types of pumps  
Full water treatment  
service available**

**DAREN ROSS**

**Ph: 8241726**

**Or 0274 346 571**

Email:

**admin@rosspumps.co.nz**

**THIS SPACE COULD  
BE YOURS  
IF YOU WOULD  
LIKE TO  
ADVERTISE YOUR  
BUSINESS HERE**

**PLEASE CONTACT  
THE COMMITTEE**

**If you need this  
AED**

**You Need an  
Ambulance!!!**

**Call 111**

**Ask for Ambulance  
Give the location of  
this box as shown  
below. Ambulance  
control will give you  
the code, Remove the  
cover, Enter Code,**

## EUREKA HALL HIRE

Weddings, parties,  
Meetings, a great  
venue.

To Book

Email

eurekahallwaikato@gmail.com



# CTAS

100% NZ Owned and Operated

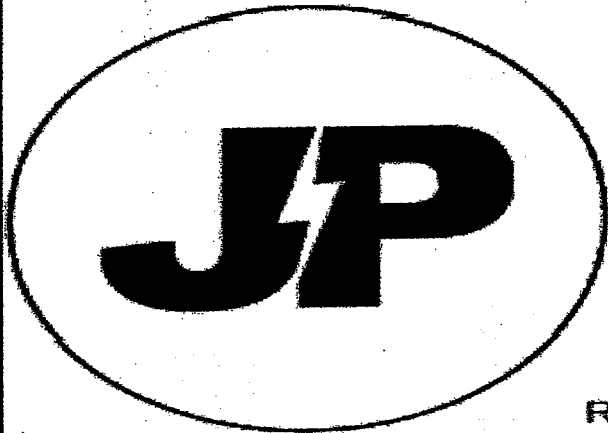
- TXT and Email Alerts and Reminders
- TXT Shortcodes for your business or club
- Flight Status by TXting your Flight to 8808
- Live Video and Audio Streaming on the Internet



Reminders by TXT and Email

## YOUTXT™

[www.ctas.nz](http://www.ctas.nz) | [sales@ctas.nz](mailto:sales@ctas.nz) | [www.youtxt.nz](http://www.youtxt.nz)



JP ELECTRICS

EST 2022

## JAMES PALMER

REGISTERED ELECTRICIAN

⚡ 027 756 6804

⚡ [james@jpelectrics.nz](mailto:james@jpelectrics.nz)

⚡ [www.jpelectrics.nz](http://www.jpelectrics.nz)

Residential | Commercial | Heat Pumps



QUALITY ASSURED  
MASTER  
ELECTRICIAN

## COMPUTERISED BULK SPREADERS LTD

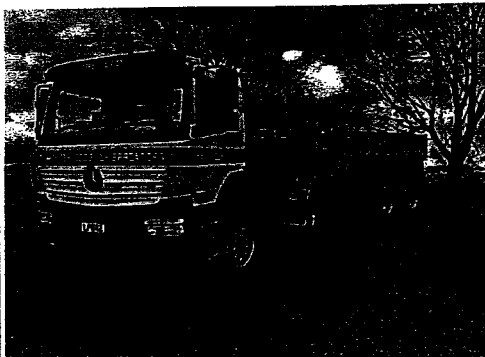
Cartage and Spreading

### FERTILISER, LINE, UREA SPECIALIST

Competitive Rates

PETER JONES

027 496 3370



**\*37 years service in the Morrinsville district \***



161 Morrinsville Road, Hamilton, 3286  
Phone: 07 856 4522 Email enquiries@newsteadvets.co.nz  
Website: www.newsteadvets.co.nz

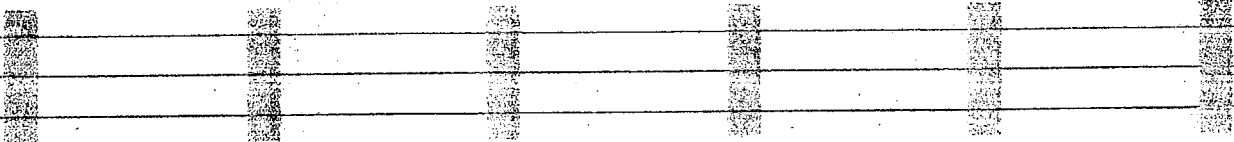
Newstead Vets offer a full range of veterinary services for small animals including:

- \* Consultations (by appointment only)
- \* Soft Tissue and Orthopaedic Surgery
- \* Digital Radiography and Ultrasonography
- \* NZVA Microchipping Accredited Practice
- \* Nutrition and product Advice
- \* Rural location with ample parking
- \* Referral to Specialists
- \* PennHIP Certified
- \* Full Laboratory Service
- \* Hospitalisation
- \* Cremation Service
- \* Convenient Online Shop

# G&M FENCING

## WAIKATO WIDE

For all your rural, lifestyle and residential fencing needs



Contact Mitch  
0278418055  
gandmfencingnz@gmail.com

### Local Boutique Jeweller

DESIGN | MANUFACTURE | SHOWROOM

- Showroom by appointment only
- Private personal shopping experience
- Repairs and maintenance
- Custom design & manufacturing
- Remodelling old or unworn jewellery
- Unique, one-of-a-kind designs & small collection jewellery
- Independent insurance valuation services
- Wine and cheese shopping experience for small groups



GET IN TOUCH

@erikawatsonjewellery  
@ErikaWatsonJewellery  
erikawatsonjewellery@gmail.com

# Dig It Earthworks

## EARTHMOVING & EXCAVATION

- House Pad & Driveway Prep
- Driveways
- Section clearing
- Footings & Post Hole Boring
- Landscaping & Lawns
- Farm Maintenance & Races
- Truck & Labour Hire
- Calf/Goat/Pig/Chicken Shed Clearing

## CONCRETE LAYING

- House & Garage Pads
- Driveways
- Sheds/Workshops
- Patios
- Footpaths



**Give Liam a call today for a free quote on 021 02839174**



**Providing Professional Agricultural Contracting Services**

### Services Include:

- Baling, Round, Big Square & Conventional
- Spraying
- Grass Silage – Chopper & Loader wagons
- Maize Silage – Cultivations, Planting & Harvesting
- Bulk & Hiab Cartage

**Call Jeremy Rothery for inquiries or bookings 027 526 2441**

**[www.jclag.co.nz](http://www.jclag.co.nz)**





# **GULL EUREKA**

**PETROL - DIESEL - LPG - OILS & LUBRICANTS**

**FARM SUPPLIES - GROCERY ITEMS**

**SHOP HOURS: MONDAY TO FRIDAY 730:AM - 600:PM**

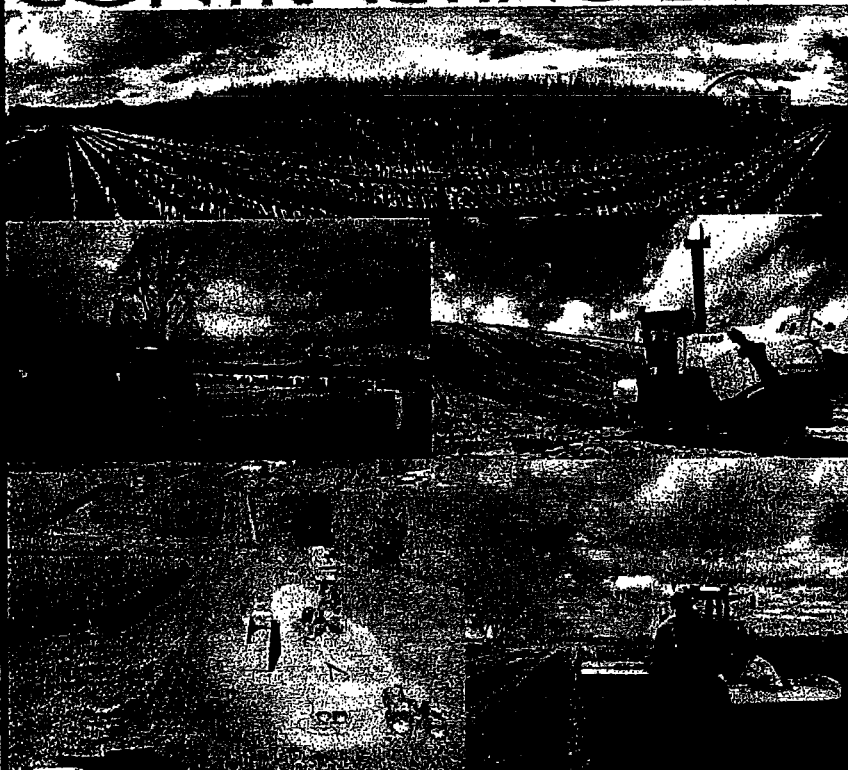
**FUEL 24 X 7 PETROL & DIESEL FROM OPT (OUTDOOR PAYMENT TERMINAL)**

**EFTPOS - RD1 FARM SOURCE - FARMLANDS - CARDLINK- AMEX -  
MASTERCARD- VISA**

**FOLLOW US ON FACEBOOK FOR DISCOUNT DAYS AND PROMOTIONAL INFORMATION**

**Gull Eureka  
1291 Morrinsville Road  
R.D.6  
HAMILTON  
Tel: 07 824 1773**

## **Walling** **CONTRACTING LTD**



**For all your:**

- **Ground Cultivation**
- **Planting**
- **Re-Grassing**
- **Under Sowing**
- **Grass Silage**
- **Maize Silage**
- **Digger & Spray**
- Requirements**

**Phone Zach: 027 450 0125**

**EMAIL: [walling.contracting.ltd@gmail.com](mailto:walling.contracting.ltd@gmail.com)**

# **EMERGENCY EVACUATION PLAN**

**Use these tips to get  
prepared:**

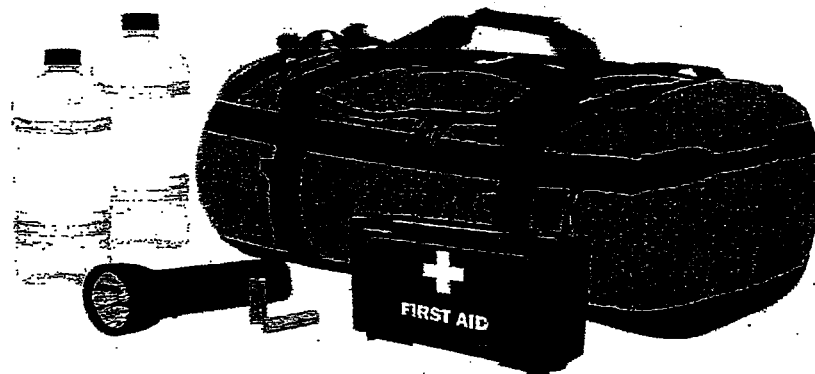
**Gather supplies such as food,  
Water, clothing, medications,  
batteries and chargers to assemble a  
disaster kit.**

**Help your neighbours**

**Share supplies**

**Make and keep a list of all emergency contacts. Make sure  
all of the family can access these. Save them in your phone**

**Keep neighbours, friends and family informed of your  
whereabouts.**





# WAIKATO SHED C O M P A N Y ✓✓

great sheds, done right!

Local Company  
based at Eureka

Our sheds are all made  
from NZ Steel and  
certified NZ made so by  
purchasing from us you  
are supporting more  
than one New Zealand  
Business

Lifestyle

Rural

Industrial

Habitable

Sleepout

## EPIC BUILD - MASSEY ARCHERY CLUB

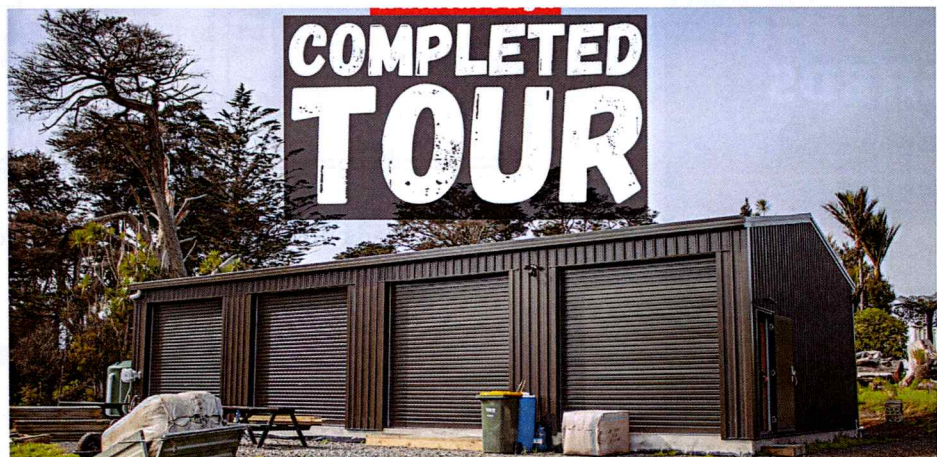


In 2022, the club approached us to design a shed that could serve multiple purposes, including hosting functions, housing a kitchen, and securely storing gear until their clubrooms are constructed.

After extensive fundraising and dedicated efforts by the committee and club members, a spacious **four-bay shed** measuring **9m x 16m** has been built - an ideal space for archery enthusiasts.

(NZ Steel & Mcraft) **Clearspan Portals** allow the client to frame the inside and add some internal walls as needed. The **PA Door** is equipped with a **digital lock**, providing easy access for everyone with the combination. Since it's manual, no batteries are required.

Watch the build on our YouTube channel



Waikato Shed Company

218 Hunter Road

Eureka

07 824 1045

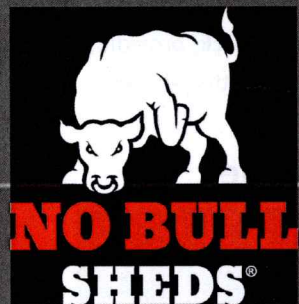
[enquiries@waikatosheds.co.nz](mailto:enquiries@waikatosheds.co.nz)

[www.waikatosheds.co.nz](http://www.waikatosheds.co.nz)



**Local Company**  
**based at Eureka**  
 Our sheds are all made  
 from NZ Steel and  
 certified NZ made so by  
 purchasing from us you  
 are supporting more  
 than one New Zealand  
 Business

**Lifestyle**  
**Rural**  
**Industrial**  
**Habitable**  
**Sleepout**

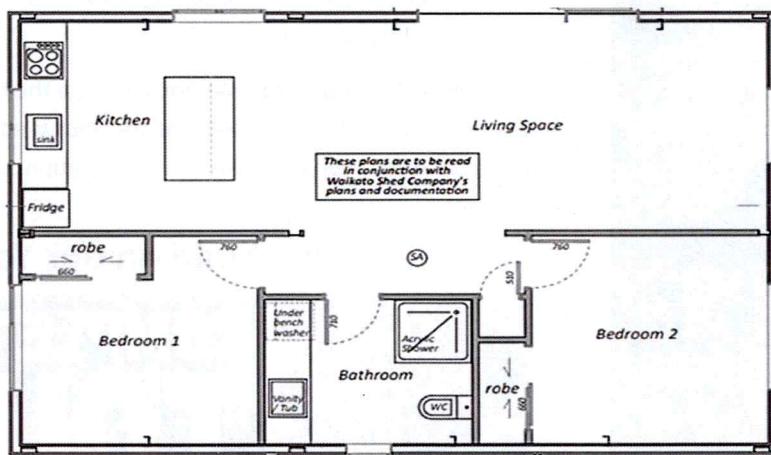


## ANGUS BARN - MINOR DWELLING



A stunning 70 sqm kitset habitable barn designed & engineered by No Bull sheds.

The **exterior finish** looks fab on the **Roof T-Rib Colorsteel in Lignite**, providing a robust and stylish finish. **T-Rib Ironsand** on the **Walls** offer a sleek and durable exterior. **125mm Colorsteel Lignite Gutters** ensuring effective water management with a cohesive look. The **Joinery in Mineral Brown** complementing the overall design, with the **Flashings in Colorsteel Ironsand** giving a polished appearance.



Explore all the details on our **NO BULL** website or call in to see us

218 Hunter Road  
 Eureka  
 07 824 1045

[enquiries@nobullsheds.co.nz](mailto:enquiries@nobullsheds.co.nz)  
[www.nobullsheds.co.nz](http://www.nobullsheds.co.nz)



**Waikato Shed Company**  
 Strength by Design



**SUBSCRIBE**

