

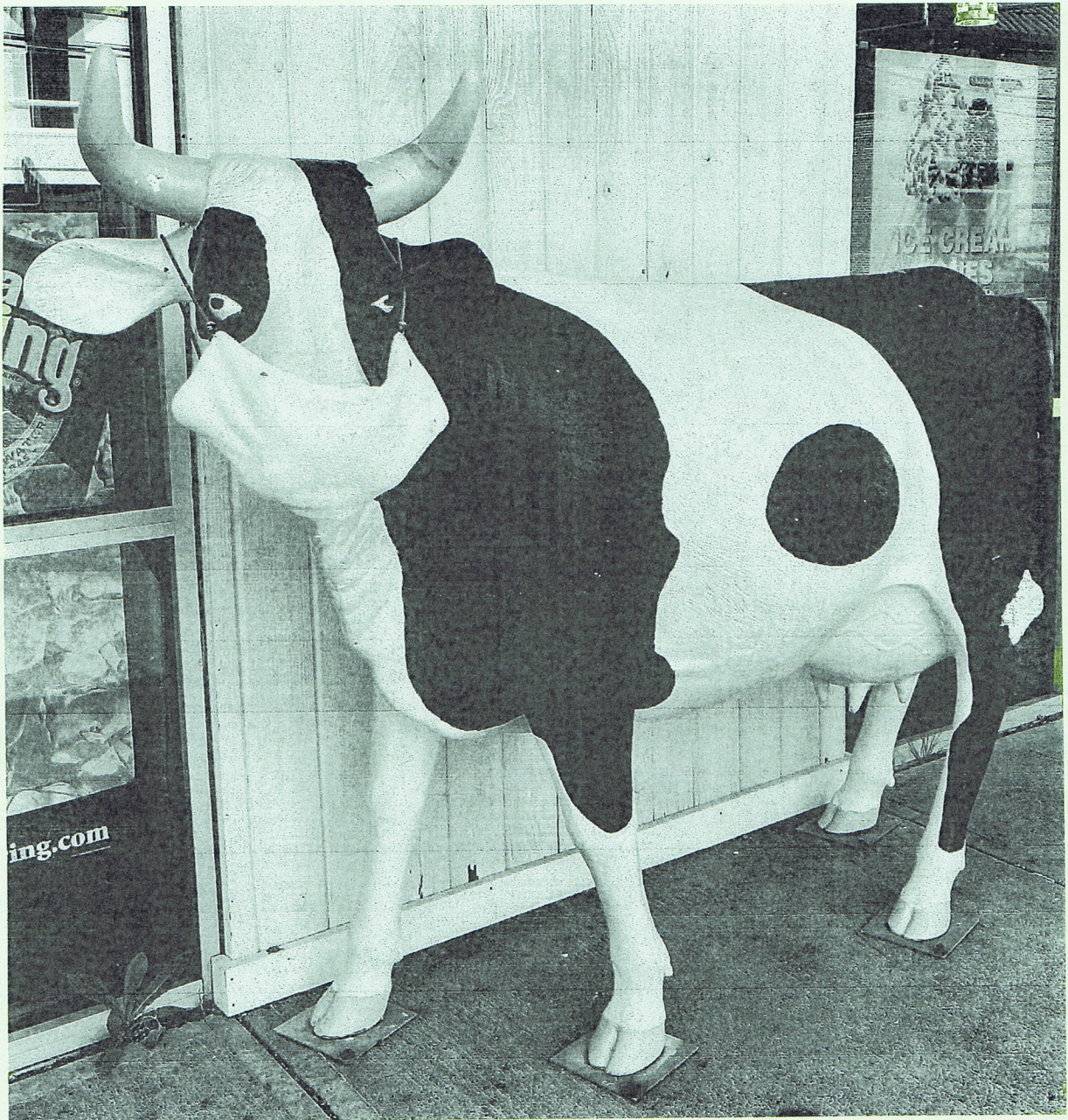
# *Eureka Express*

*Vol XLI No.6 Circ 315*

*August 2020*

[www.eurekaexpress.co.nz](http://www.eurekaexpress.co.nz)

[editor@eurekaexpress.co.nz](mailto:editor@eurekaexpress.co.nz)



Keep it up NZ!



# EDITORIAL

After living here for the last 8 years we thought we had got away with not having to write an editorial but they finally caught up with us.....

So just to introduce our family - there's me Ali, Gary and our daughter Mya 17 years - we moved into the Eureka community back in April 2012. Prior to this we lived in Matangi since 2003, in one of the "Seven Sisters", on Matangi Road. Gary and I both emigrated from the UK back in 1999 - after doing our OE in New Zealand in 1996. We thought it would be a good place to live and work for a while - I guess we never thought at the time we would still be here 21 years later and not making plans to return to the UK anytime soon.

We live in the old homestead that once belonged to the Kimber family and was part of their farm at some point. When we moved in, Robert and Beverly Kimber still lived in the front property and still owned the farm. The house was built in 1927 and still has a lot of original features left which adds to its uniqueness and character. We have approximately 2 acres of land, which is enough to call it a lifestyle block. Gary and I painted the house 2 years ago which only took us 3 weeks to do. I think we're looking at painting the roof this year, not sure how long that will take, but hopefully not 3 weeks!! We have a friendly goat called Kevin and a sheep called Dave, who got a reprieve from the freezer some-time ago. Dave will probably get another reprieve as there are two more sheep who will be going shortly!! I also keep several chickens along with a rescued dog and two cats. Life in our household is always very busy but pretty sweet.

Gary is a die-hard Chelsea and England supporter in the football world, or soccer as other people might know it. Every couple of years you may see the St George's cross flag flying from the deck in support of either the Euro championships or the football world cup. You might also see the light on in the house at strange times in the early hours of the morning as someone is watching the football live. Gary and I both work full-time, Gary is an automotive technician (mechanic in the old days). Up until the middle of this year he worked at Coombes Johnston in Te Rapa, where he had been for 20 years. He now works for Collins Automotive on Quentin Drive. He probably won't be there 20 years as he's looking at retiring in 5 years' time lol!!

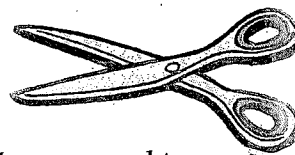
I work with first-time child and youth offenders for a well-known government organisation and Mya is currently in her last year at Hillcrest High School. She is in the process of applying for universities (Otago and Auckland) for the 2021 academic year nerve wracking and exciting at the same-time although Mya is looking forward to moving out of home (not sure I am!!) For us, as parents things will change and for Mya this will also be a big change and the start of a new chapter in all of our lives. We love living in Eureka, it's far enough to be out of Hamilton away from hustle and bustle of the city and nice to be able to take a short trip to Morrinsville. So no plans to move anytime soon.

**Ali Haggett**





## Snippets



**WELCOME TO EUREKA:** to recent new arrivals on Hinton Road who managed to move in just at the last minute as Level 4 Lockdown happened in March. Simon Macaskill and Karen Lockhart have moved out from Silverdale, Hamilton, to enjoy some country life. Both Simon and Karen work for our DHB and Simon spends his leisure time playing golf, croquet and golf-croquet. A belated but never the less, very warm welcome to you both. Ph 0212513041.

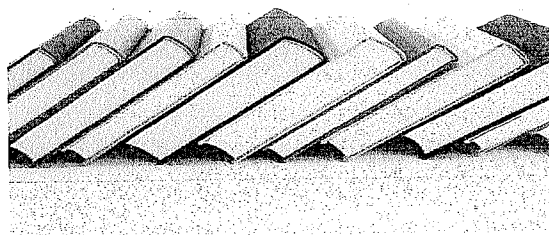
**HAPPY FIRST BIRTHDAY BARBARISTA!!** Our local coffee lady, Barbara, has now been serving her coffees and food at the Eureka Hall for 12 months. You are a great addition to our community, Barb, and deserve our continuing support. Barbara will be taking a well-earned break from 27th August to 7th September, but don't worry, she will be back!

## LOCAL TELEPHONE LIST

The annual update is underway. If you have dropped your landline and wish to have your mobile number listed, or wish to make any correction, addition or deletion, please ring, text or email Gail. 0212113348 or email [gandb.mayall@gmail.com](mailto:gandb.mayall@gmail.com) The updated list will be circulated next month.

## \$2 Book Fair

Friday 4<sup>th</sup> – Sunday 13<sup>th</sup> September  
9am – 6pm  
Eureka Hall





## HALL UPDATE

The AGM for the hall committee was held on Tuesday 18<sup>th</sup> August. It was lovely to see a good gathering of people and we also were lucky to recruit two new people to the committee. Barbara Klop (our lovely barista) and her partner Kerry McCarthy. It was with sadness though that we accepted three resignations - Alan Morrison, Barry Mayall, and Philip Mayall. Alan was on the committee for 26 years, and during that time he held the position of Chairperson. Barry joined the committee over 60 years ago to start a badminton club. He was on the committee when the new hall was built, and has played a major role in doing maintenance on the hall over all of these years. Philip has been on the committee for over 20 years and he also held the role of Chairperson. A huge thank you to you three for the time you have given to the community and the hall committee over these years. Your time has been greatly appreciated.

An election of officers was held, with Gayle Orr retaining the position of Chairperson, Gail Mayall remaining as Secretary and Lionel Orr continuing on as Treasurer. The rest of the committee was elected on block with the addition of two new members Barbara and Kerry. The committee still have the right to co-opt more people to the committee over the year so if you want to join us, you are very welcome and it's not too late.

We completed our projects for the year and will continue to keep the hall maintenance up as we are required to by the council. The committee will be looking for another project at our next meeting.

The committee discussed our current hire charges and decided it was time to increase them. There hasn't been an increase in the charges since 2008, and it was decided it was time due to the increase in power and the fact we have spent so much money on the hall with the heat pumps, new chairs, new stove, and the new hand dryers in the restrooms, and the cost of hall cleaning. The hall is a community venue, but is also advertised on the Waikato District Council website so other people can hire it. That is why we have the two prices. The Secretary still has the discretion to amend charges depending on the event being held. Below are the prices for the hall for this year. If you would like to book a function, contact Gail Mayall 8241 758.

Usage	Residents	Non - Residents
Meeting Supper room per day	\$ 25	\$ 50
Meeting Hall per day	\$ 50	\$100
Social function	\$150	\$250
Weddings & Dance	\$300	\$500
Children's party	\$30	\$ 30
Bond	\$400 Secretary's Discretion	\$500 Secretary's discretion

Bookings for the hall are still coming in but we still have spaces available. It is so rewarding to see the hall being used like it is, we appreciate the community's support.

As we are still at level 2 for Covid-19, (at the time of writing this), the hall is set up and has all of the information required. The Covid tracking sign is up and for those who cannot track via their phone, we still have the paper tracking forms. Hand sanitiser is supplied at the door. We encourage all users or visitors of the hall to use everything we have provided.

On behalf of the committee please keep safe.



# TAUWHARE INDOOR BOWLING CLUB

Welcome to August's newsletter.

Well it is disappointing that Covid has reappeared but luckily we are still able to continue with bowls at this stage.

As the bowling season continues to be very different to any other season we have experienced, it is still really encouraging with the numbers that have been attending on a Thursday evening with between 10 and 18 players each night.

Events played since the last newsletter:-

Club night winners for 23.07.20 – Jim Bargh and Kevin Williams

Championship Pairs 30.07.20 – Final still to be played

Club night 06.08.20 – Jim Bargh, Robin Bargh and Glenda Goodare

Championship Singles 13.08.20 – Winner Jim Bargh and runner up Bev Meads

Upcoming bowls 'til the end of the season:-

20.08.20 – Club Night

27.08.20 – Final Points Night

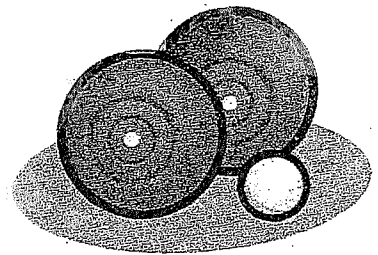
31.08.20 – Visit to Tamahere

03.09.20 – President and Vice President's Night

10.09.20 – Patron's Night

17.09.20 – Club Night

24.09.20 – AGM and Prize Giving



Even if you have not played bowls before but would like to give it a go, there is still time before the season finishes so come along to the Tauwhare Hall on a Thursday evening. We have players in the club that are more than willing to explain how the game is played and help you get started. We start at 7.30pm but names need to be in by 7.25pm

If you would like more information then do not hesitate to contact one of the following people:-

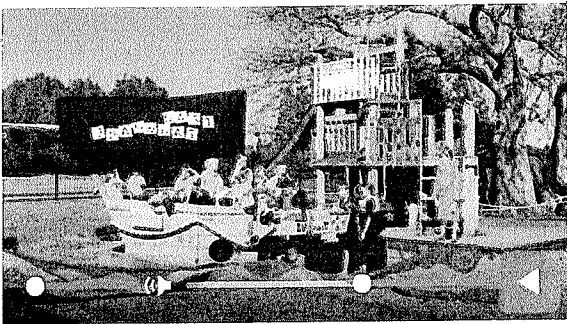
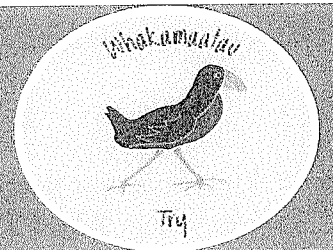
Jim and Rosalie Arnold	07 887 4832
Bev Meads	021 172 7822
Kevin Williams	07 824 0728

**PLEASE REMAIN SAFE AND LOOK AFTER YOURSELVES, YOUR FAMILIES AND WE  
WILL GET THROUGH THIS**



# Tauwhare School

RD7 Hamilton 3287 New Zealand  
e admin@tauwhare.school.nz  
t 07 824 0864



## SCHOOLS' AMERICAS CUP CHALLENGE

Miss Slade and a group of very keen children have been working on their entry to the America's Cup Trophy Experience competition run by Genesis, who are offering primary and intermediate schools across New Zealand the chance to WIN a fun and educational America's Cup Trophy experience and \$3,000 of learning equipment for their school.

The children needed to use green-screening, music and videoing skills to support their story.



## Ambassador Assemblies

Every Friday the Ambassadors and House Leaders run the school assembly.

My favourite moment is Joke of the Week where children of all ages get up to tell a joke. When we found a visitor in our library, Amberley immediately made a new joke:

*Why did the chicken cross the road? To get to the bok, bok bok books*



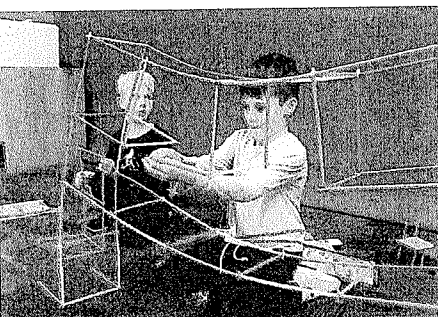
On Thursday, the students of Tauwhare presented to the whole school their inquiry projects in Enviro studies. The students inspired us with the different projects, we learnt about a range of different environmental issues including zero waste, composting, worm farming, codling moth, tree pruning, ecosystem and the skinks and the upgrading of our vegetable garden and trading post. Enviro schools this year is student lead and they are looking at environmental issues that are important to them.

**Nanogirl came to visit!** Her role is to inspire STEAM (science, technology, engineering, art and mathematics) exploration in students and she certainly did that!



Ms Quinn has set up our own STEAM room, called the Makerspace, where classes can go to explore, experiment and create using environmental materials for science and technology and creative arts, plus robotics, coding and 3D printing.

Room 4 used STEM kits and low-tech materials like ice block sticks to design a bridge which does not have its 'feet' in the river, as required now for the Waikato River.





# TAUWHARE PLAYGROUP

Unfortunately due to Covid – level 2 we have had to have a couple of weeks away from playgroup. We look forward to been back in level 1 and starting up again.

Tauwhare playgroup is a friendly and fun group, where parents, grandparents, caregivers, children and babies meet together in a relaxed environment.

Everyone is welcome.

We meet in the Tauwhare School multipurpose room on Thursday mornings (during term time) from 9-12.

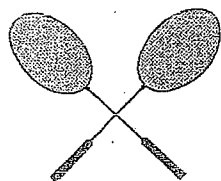
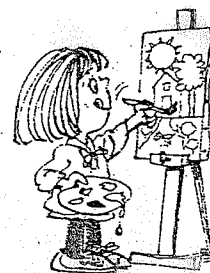
Our playgroup is free to attend, and our activities include: music and singing, imaginative play, outdoor and free play, art and craft activities, trips to interesting places.

## About Playgroup

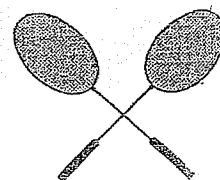
No child is too young for playgroup. All children from 0-5 love new experiences and benefit from developing sensory, social and communication skills through activities at playgroup.

Children like playgroup because they can:

- Participate in new experiments
- Develop and increase their social skills
- Learn sharing, co operation and simple routines.
- Interact with other children and adults in a safe environment.
- Enjoy learning more about their world.



# EUREKA BADMINTON CLUB



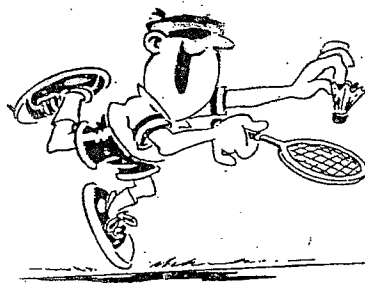
## JUNIOR BADMINTON

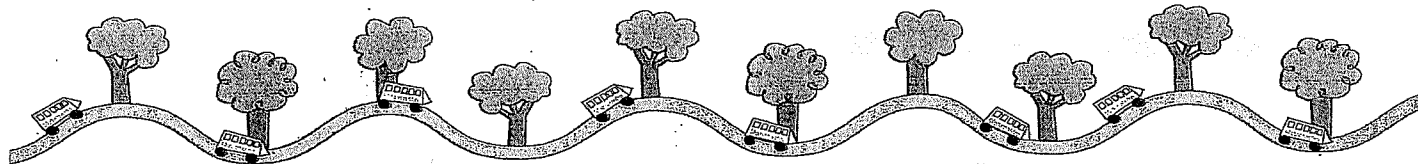
**Junior Badminton** is going well with good numbers at:

**Matangi Hall**  
**Wednesday nights 6 -7.30pm**

It is almost Championship time and Closing Night will be Wed 23rd September.

For further information please phone Bryce 8240699





# Motumaoho School

2101 State Highway 26, RD2 Morrinsville 3372 | [office@motumaoho.school.nz](mailto:office@motumaoho.school.nz) | p. 07 8897597

## August, 2020

Kia ora koutau katoa,

Wow! I can't believe we are already at the halfway point of Term 3. It is great to see our learners working hard and displaying increased amounts of resilience towards their learning. I am always impressed with the focus shown by all our learners and their teachers and the continued support shown by our families.

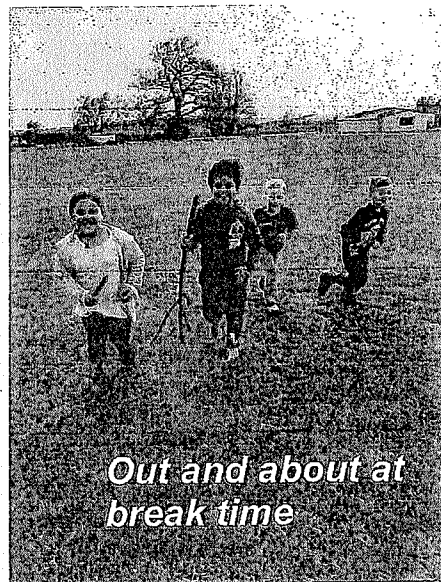
Currently at Alert Level 2 it's great to see our learners and community following our health guidelines and I would like to thank you for your continued support for all we are doing to keep our community safe.

### Thank you to the Morrinsville Kiwanis Club

The Kiwanis Club donated a number of schools these awesome reflective vests. These vests come in handy for school trips where we may use buses or are in large crowds and can identify our school group easily. Thank you Morrinsville Kiwanis!

Nga mihi

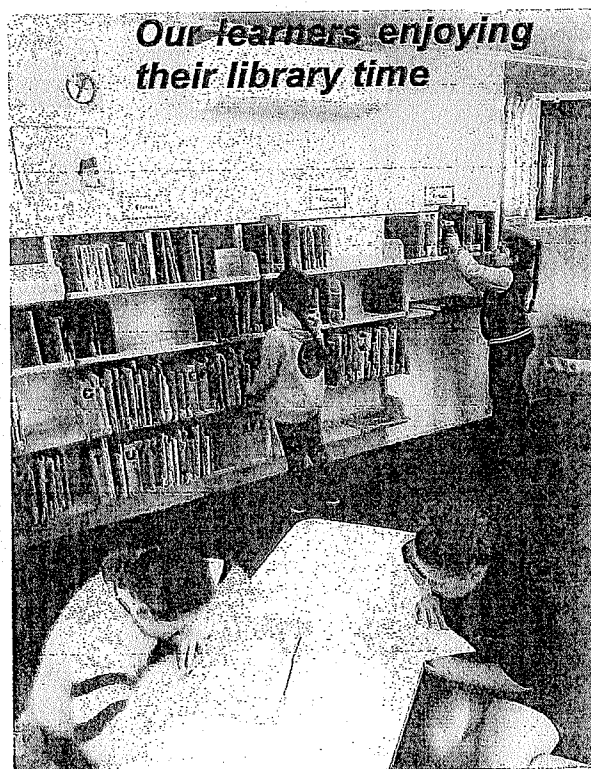
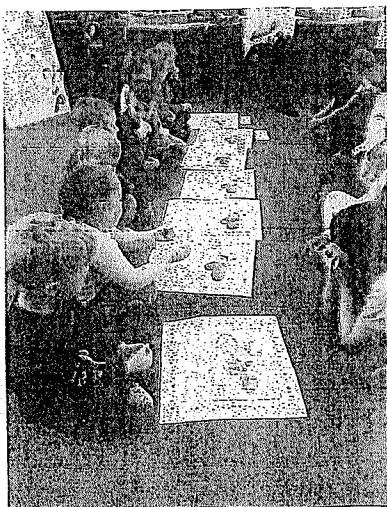
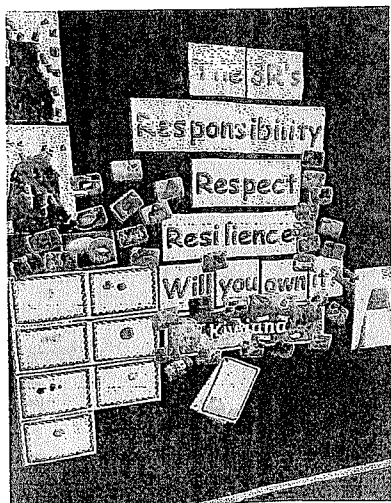
Phillip Otto - Principal



*Out and about at break time*

### Big Learning

Our learners have been using the Kiwiana theme in their writing. The seniors are working on paragraph formation and the juniors have been working on sentence structure. Both skills are important when writing a clear message to the audience.



*Our learners enjoying their library time*



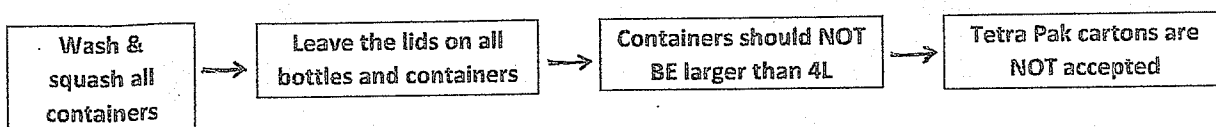
## ON YOUR REFUSE AND RECYCLING COLLECTION DAY



- Leave your bin or bag as close as you can to the roadside and clear of the letter box
- Place your bin or bag away from signs, power poles and trees. Make sure your bag is not overfull and that your bag is safe to carry
- Place your bag or bin out by 7:30am on your usual collection day. Remember to check [www.waikatodistrict.govt.nz](http://www.waikatodistrict.govt.nz) for public holiday changes.
- Remember if you don't put your refuse or recycling out right, it may not be collected.
- Wrap any broken glass or sharp objects thoroughly before putting them in the refuse bag
- Place a pre-paid sticker on each refuse bag – available from supermarkets or Gull Eureka

### Frequently asked Questions

- 1. Is there a limit to the number of refuse bags I can have collected?**  
There is no limit as long as each bag has its own clearly displayed pre-paid sticker. 20kg is the maximum bag weight and 60 litres in size. Any bag can be used e.g. calf meal sack, a dog biscuit bag, a black sack from the supermarket or a reusable plastic bag.
- 2. What can I put in the recycling crates?**  
You can put rinsed glass, plastic 1, 2 and 5, aluminium and cans. Cardboard and paper must be contained in a bag or a box or tied up with string and placed beside or under your crate.
- 3. Are pizza boxes recyclable?**  
If they are empty with no left-over pizza or crust, they can be put out for recycling.
- 4. What happens if I put something in my recycling that is not recyclable?**  
It will be left in your recycling crate (for you to put in your refuse bag) with a sticker attached and the reason for non-collection.
- 5. Can I put my cardboard out without a bag for collection?**  
We recommend putting it in a box, bag or tying it with string. Keeping it contained means it doesn't get blown around the road. (Supermarkets are good places to get boxes.)
- 6. What if refuse is dumped on the kerbside in front of my property?**  
Contact us on 07 824 8633 or 0800 492 452 and report any details you may have such as vehicle registration plate details, descriptions or photographs and we will take it from there. Do not attempt to remove it.
- 7. Why should I squash plastic containers?**  
Squashed plastic bottles are less likely to blow around in the wind and create more space in your crate.
- 8. Do I need to remove the lids from bottles?**  
At this stage there is no need to remove lids.
- 9. Where can I recycle soft plastics i.e. bread bags, biscuits wraps, frozen vege bags etc**  
Until late 2018 supermarkets were providing a bin for recycling soft plastics. Unfortunately, this scheme has been discontinued. It has started up again in Auckland, but there are no plans yet to roll it out in the regions.



## How to reduce virtual noise

Your phones, your tablets, and now, your desktop computers and laptops, are designed to distract. How do they distract? Via pop-ups, notifications, news, new features and general interface design. The most obvious are the notifications on your phone. By default, if you have a news app installed like "stuff.co.nz", it will (provided your phone is connected to the internet) ping you every so often with new articles it thinks you might enjoy.

Although that's a naive way of putting it. It'll ping you with articles it thinks you will *engage with*. That is to say, the more sensational the article, the more likely you are to view it, and the more likely it is that you'll see advertising, and then the stuff website gets paid by the advertiser. That's the way it's always worked with news. But the danger nowadays is that these apps, websites and advertising channels can connect with us 24/7. Which is kinda unhealthy.

Given the tendency toward sensationalism, and the fact that your fight-or-flight response gets engaged by articles which traumatise or enrage us, we basically give these companies permission to hijack our nervous systems and make us uncomfortable, unhappy and angry, 24/7. Not a great way to be! So what I'm going to show you is some ways to take back control of your phone/tablet/computer, and your nervous system.

The first way is disabling notifications. All modern phones/tablets and computer operating systems like Windows or Android allow you to disable notifications for individual apps in your settings. The location of these settings differ from device to device, so you'll have to take a look for yourself, but generally if you search for 'notifications' under 'Settings' you should find it. Turning them off also means the app won't run in the background, which slows your device down.

A second way is to disconnect from the internet. For a desktop or laptop computer this may not be appropriate or useful, but for tablets and smartphones it actually makes sense, as cell data & wifi use the most power out of everything on your phone, beside the screen. Turning these off not only disables notifications temporarily, it will also make your phone/tablet battery last longer, and also disables a certain amount of tracking or telemetry from that device about your activities and location.

The third way is of course, to get rid of those apps. Do you really need the 'stuff' app? Is the occasional interesting, thought-provoking article worth the screeds of target-marketed drivel that come out of that site? Go through your apps, delete what you don't need and free up some space, and in the process free yourself up. Nobody likes a cranky person, but winding people up is what so much of the internet is about. It's designed to make you unhappy.

Email Matt on [info@homepcsupport.co.nz](mailto:info@homepcsupport.co.nz) or phone **0211348576**.

\$60 per hour, \$50 per hour for drop-off-to-workshop services.



## Bentley Home PC Support





## How to make compost – a step by step guide

Do you have a compost bin at home? If not, give it a go, with this guide to starting a compost bin.

Composting fruit and vegetable scraps and organic materials at home can hugely reduce the waste that ends up in landfill. And composting provides free fertiliser that can improve the growth of fruit and vegetables, flowers, trees and bushes.

Here is a how-to guide to composting.

### 1. Choose a type of compost bin.

I would recommend a contained or fenced in compost bin, rather than an open heap.

We built compost bins from wood, as we needed a few of them to deal with the amount of compostable material we create. If you are starting off, you can buy a readymade bin from a garden centre or DIY store.

### 2. Choose a spot for your compost bin.

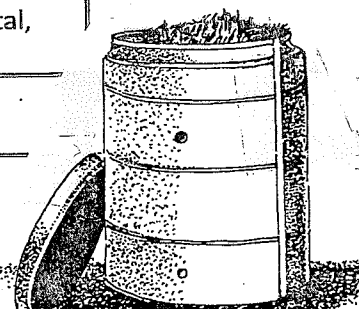
The best place to put a compost bin is where you will easily access it! If it isn't very convenient, you will be less likely to use it.

Start your compost bin on bare earth, so that the worms can move up into the compost from the ground. Find a place that is flat and not shaded by trees or buildings.

**3. Add alternate layers of different types of natural materials.** Put some twigs in the bottom of the compost bin, to allow for some drainage. Add leaves to cover this layer.

Then add a good mix of 'Green' material and 'Brown' material – see lists below.

Browns	Greens	Not for a compost bin – could use a Bokashi bin for these items
Newspaper	Vegetable peels and leftovers	Dairy products
Paper	Fruit peels and leftovers	Meat, fish or bones
Cardboard	Coffee grounds	Fat or oil
Straw	Tea leaves / bags	Invasive weeds or diseased plants
Dried leaves	Egg shells	Dog and cat waste
Dead houseplants	Flowers	Non-organics – plastic, metal, glass, toxic material
Sawdust (small amount of untreated wood only)	Green leaves	
Dryer / vacuum cleaner lint	Garden waste	
Coffee filters	Grass clippings	



A bokashi bin can deal with meat, dairy and cooked foods. For information about starting a bokashi bin, search online.

#### 4. Add waste from your kitchen or garden as it builds up.

Keep a container in your kitchen for compostable food waste and scraps. I keep mine in a drawer by sink, so that it is handy to add more compostables to when you are preparing food. Empty it regularly.

#### 5. Continue to add to your compost bin

The contents of the compost bin will settle down and shrink, as the organic material decomposes.

#### 6. To speed up the process, mix or turn the compost regularly

If you want the compost ready more quickly, you can mix new material in with the lower layers, and / or turn over the compost with a garden fork once a week.

#### 7. Use your compost in the garden

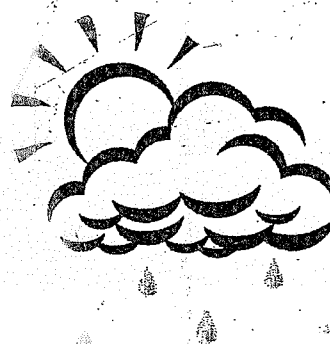
The compost should be ready within four to six months. It will be dark brown, and smell like earth / soil. Dig out the finished compost, and leave any bits that are not decomposed enough in the bin.

Find me at [www.eco-pippa.com](http://www.eco-pippa.com) and follow me on Facebook, Instagram, and Pinterest – search for 'Eco Pippa'.

**Pippa**

## WEATHER

Weather for July 2020		
Rainfall total	79.4 mm	
Rain Total for year	335.6 mm	
Rainy days	16	
Most daily rainfall	12.2 mm	22 <sup>nd</sup> July
Highest wind speed	56.2 km/hr	8 <sup>th</sup> July
Temp high	18.8 C	18 <sup>th</sup> July
Temp low	-2.8 C	10 <sup>th</sup> July



### ADVERTISING RATES

Classified Adverts Free

Small Business Adverts \$10 /month  
- x 10 insertions \$80 /year

One Third Page Adverts \$15 /month  
- x 10 insertions \$120 / year

One Half Page Adverts \$20 / month  
- x 10 insertions \$160 /year

### CONTACTS

Gail Mayall (Editor)  
70 Eureka Road  
Ph: 07 824 1758 or 021 211 3348  
Email: [editor@eurekaexpress.co.nz](mailto:editor@eurekaexpress.co.nz)

Glenys Middlemiss (Treasurer)  
Ph: 07 824 1647  
Email: [tres.eurekaexpress@gmail.com](mailto:tres.eurekaexpress@gmail.com)



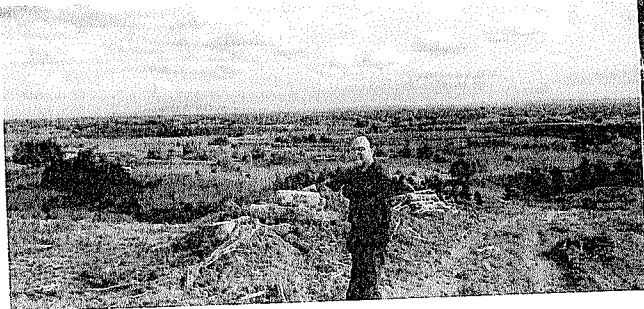
THE SCULPTURE PARK  
@ WAITAKARURU  
ARBORETUM

The 2400 New Zealand native trees have been planted on the south side of the hill, facing Scotsman Valley Road over recent weeks. We hope the welcome rainfall will see them establish quickly.

Now the plants have begun to arrive for the Asian forest from nurseries around NZ. The plants are 'heeled in' at a temporary location prior to planting (see photo). This weekend we, with the help of volunteers, started marking out the location for the clusters of trees and shrubs up the gully. There will be more than 3000 trees and shrubs originating from China, Korea, Japan and other Asian countries planted this year. Among the more than 90 species, there will be cherries, ginkgos, maples, firs, cedars, and rhododendrons. The project extends the Asian section of plants through the gully and up the hillsides.

Felicity Campbell, a landscape architect, designed the plan. Felicity has largely supplied her design services pro-bono. In addition, a number of volunteers have helped us lay out the plan before the planting begins within the next few weeks.

It will be a few years before the planting matures to fill the hillsides. But in the meantime, visitors to the park can walk up the pathways, take a look at the planting markers, and enjoy the view at the crest of the hill – the panorama stretches out from the Mt. Pirongia to Pukemoremore and beyond....well worth the climb up. (see photo) Eventually it will be part of a second loop walk.

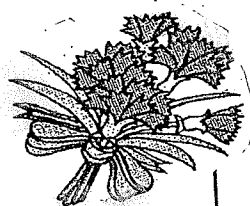


## TAUWHARE GARDEN CLUB

[launched in late 2019]

Monthly meetings, garden visits, guest speakers and more.  
Find us on Facebook – search for 'Tauwhare Garden Club' or contact Pippa on

0272935184 for details



New Zealanders certainly had a wakeup call in the past few weeks when Covid-19 cases were discovered in the community. We can't take Level 1 for granted! We are so fortunate to have such wonderful parks and coastal areas to enjoy as getting outdoors to enjoy our wonderful open spaces is just the tonic needed at this time.

### Invitation

Together with a panel of supporters, we are in the process of setting up a charitable trust to ensure the park's future. The key to an effective and enduring trust is a good quality board and committed volunteers.

If you are interested in the park's future, please register your interest by **Friday, 11<sup>th</sup> September** by emailing [sculpturepark1@gmail.com](mailto:sculpturepark1@gmail.com) so we can send you more information about how the Trust would operate.

Just briefly the intention for the **Art-in-Nature Arboretum Trust** is:

*To see the park used to its full potential by the community and recognized as a regional resource of botanical, cultural and recreational significance. The art-in-nature experience invites generations in a family to come out together, groups of friends to share a walk, and children to be outdoors on a creative adventure.*

Please mark **7pm Monday 21<sup>st</sup> September** in your diary. On that evening, the panel of supporters will be calling a meeting at WINTEC Horticultural campus, Hamilton Gardens. The purpose of the meeting will be to explain the intentions of the Trust and the process of appointing trustees.

### Invitation

Formation of Art-in-Nature Arboretum Trust meeting:

7pm, Monday, 21<sup>st</sup> September 2020

Hamilton Gardens WINTEC horticultural meeting room

RSVP: [sculpturepark1@gmail.com](mailto:sculpturepark1@gmail.com)

### Interview with Jesse Mulligan

To our delight, last Tuesday Jesse Mulligan in his RNZ afternoon programme picked up on our current project of planting thousands more trees -- the extension to our Asian area. He emphasised the 30 years of restoring the landscape from the derelict quarry. Here is the link to the RNZ podcast

<https://www.rnz.co.nz/national/programmes/afternoons/audio/2018758944/waitakaruru-arboretum-and-sculpture-park-update>

### Events Calendar

We will be following through with updating our events calendar as soon as we know the Covid-19 status. Level 1 means that we can get buses and large groups of domestic visitors, all important for keeping up the maintenance of the park.



## Have you check if your cows have a “dirty” uterus?

A cow with a “dirty” uterus has a disease called ENDOMETRITIS which is a chronic, often asymptomatic, infection of the uterus in dairy cows. After calving, the uterus of every cow will be contaminated by bacteria. While most clear these bacteria naturally, around 10% to 20% will be unable to do so and often develop endometritis. This infection, often hidden, has a negative impact on the fertility of infected cows. It affects the cow’s ability to cycle at the start of mating, increases the time it takes a cow to conceive and increases empties.

New Zealand studies have shown that:

- Cows with endometritis have 10% to 20% higher empty rates
- If they do conceive, they are 2 to 3 weeks later in doing so. These calving delays mean delays in getting cows back into milk production, meaning lost days in milk. This leads to reduced productivity, which hits the farm’s bottom line. It also leads to increased costs relating to insemination and culling.

If you decide not to metricheck the herd it will really pay to have the “AT RISK” Cows treated. These are cows which:

- Retained foetal membranes
- A dead calf within (RFM or retained cleanings) 24 hours of calving
- Had assisted calving
- A visible discharge
- Cows that had twins.

Out of 250 cows, approximately 25 will develop endometritis each season – at a cost of up to \$11,000.

Endometritis is simple to identify and treat. The benefits of treating endometritis include:

- Better submission rates
- Better conception rates
- More days in milk next season
- More income, and a demonstrable return on investment.

In a 250-cow herd, the cost of endometritis could be \$11,000 per season. Out of 250 cows, approximately 25 will develop endometritis. Of these, it is likely that:

- 5 will fail to conceive (empties), at a loss of \$1200\* per cow.
- 20 cows will be 2-3 weeks late to calve, costing up to \$250\*\* per cow in lost milk production.
- Extra fertility treatments will cost even more.

New Zealand trial work by a local vet has confirmed that irrigating your cows with endometritis with antibiotics treatment on cows with endometritis results in:

- Improved reproductive performance
- Improved economic performance.

The study done in the Waikato showed that there was very definite economic benefit from identifying and treating all infected cows.

# NEWS FROM YOUR WAIKATO DISTRICT COUNCILLOR - 24 AUGUST 2020

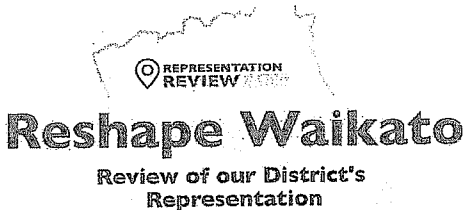


Council is continuing to meet with a mixture of Zoom and face to face meetings when it is possible to keep to social distancing guidelines.

If you or a friend or family member need financial or other assistance contact the Ministry of Social Development on 0800 559 009.

All Council facilities are open including community halls – please scan the QR poster if you visit a Council facility or, if you don't have the QR app, leave your name and contact details on the tracking forms provided.

\*\*\*\*\*



A review of our District's representation arrangements are underway. Why – so that your local representation (councillor, community board and wards) best reflect your community's interests. Have your say online at -

<https://shape.waikatodistrict.govt.nz/reshape-waikato/community-survey>

**Note:** The districts in Eureka Ward are not specifically mentioned in the "location" section of the survey, so please press "other" and specify your district.

Like other councils, the Local Government Commission requires us to undertake a review of our current representation arrangements at least once every six years. This is to ensure we provide fair and effective representation for our people and their communities. At our last review the Commission felt there wasn't any clear reasoning around our existing ward system and that not enough work had been done about communities of interest.

As someone who lives or owns property in the District, it is important that you have your say on what arrangements, such as wards and community boards, should be in place to represent you and your community. **Please take the time to complete the survey which is open from the 14th August to 27th September 2020.**

\*\*\*\*\*



With the recent changes to the COVID-19 alert levels in New Zealand, Waikato District Council and Hamilton City Council regret to announce that the Dirty Dog 2020 challenge planned for 12 September 2020 has been cancelled. The Councils were looking forward to delivering this event again, but the health and well being of our communities had to be the top priority. We hope the event can be held again next year.

\*\*\*\*\*

Good progress is being made on the Hamilton Section of the Waikato Expressway – 65% of the rock pavement is already completed. These layers will then be sealed with a prime coat to bind the top 10mm together before being sealed with bitumen and stone chip. The project's rock blending plant is being relocated from Lake Road to the more central site at Puketaha. This will reduce the travel time for the trucks carting the Hi-lab rock to the southern part of the project.

The 22km highway requires 120,000 tonnes of asphalt. NZTA mentions this in their latest newsletter and also outlines their plans to build a temporary asphalt plant at Ruakura on Tainui Group inland port land.

**Contact me any time -**

**Rob McGuire – Councillor Eureka Ward**

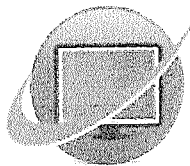
Ph. 824 3696 / Mob 0274 970 966

Email: [rob.mcguire@waidec.govt.nz](mailto:rob.mcguire@waidec.govt.nz)



**Be kind**

**Unite  
against  
COVID-19**



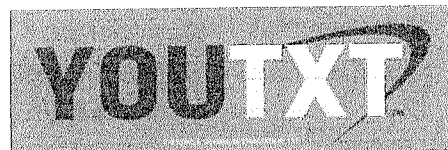
# CTAS



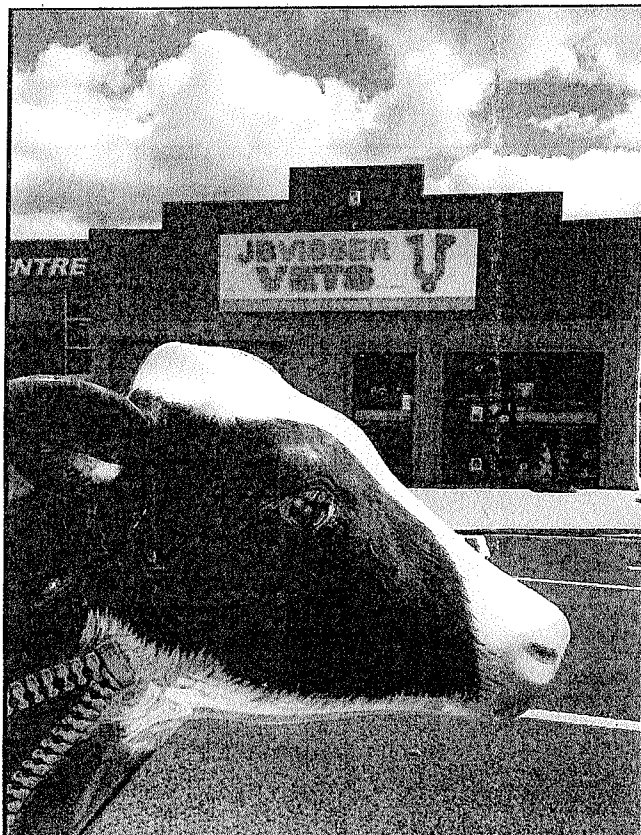
100% NZ Owned and Operated

- TXT and Email Alerts and Reminders
- TXT Shortcodes for your business or club
- Flight Status by TXTing your Flight to 8808
- Live Video and Audio Streaming on the Internet

Create and Share information by TXT



[www.ctas.nz](http://www.ctas.nz) | [sales@ctas.nz](mailto:sales@ctas.nz) | [www.youtxt.nz](http://www.youtxt.nz)



**"Your animals,  
our commitment.  
We aim to strengthen the  
health of our animal  
community by providing  
accessible, compassionate  
and affordable,  
quality veterinary care."**

If you aren't able to visit our practise in Morrinsville, we can bring our expertise right to your door or paddock!

**Ph 07 889 0414**

**JBVISSE  
VETS**  
For your Livestock & Pets

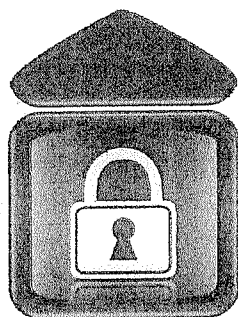




161 Morrinsville Road, Hamilton, 3286  
 Phone: 07 856 4522 Fax: 07 856 9487 Email:  
[enquiries@newsteadvets.co.nz](mailto:enquiries@newsteadvets.co.nz)  
 Website: [www.newsteadvets.co.nz](http://www.newsteadvets.co.nz)

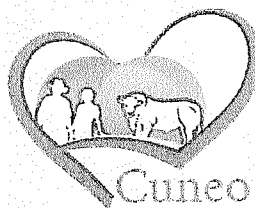
Newstead Vets offer a full range of veterinary services for small animals including:

- |   |                           |
|---|---------------------------|
| 🐾 Consultations (by appointment only)     | 🐾 Referral to Specialists |
| 🐾 Soft Tissue and Orthopaedic Surgery     | 🐾 PennHIP Certified       |
| 🐾 Digital Radiography and Ultrasonography | 🐾 Full Laboratory Service |
| 🐾 NZVA Microchipping Accredited Practice  | 🐾 Hospitalisation         |
| 🐾 Nutrition and Product Advice            | 🐾 Cremation Service       |
| 🐾 Rural location with ample parking       | 🐾 Convenient Online Shop  |



## Eureka Storage

Many options from 9m<sup>2</sup> - 307m<sup>2</sup>  
 Short term + long term  
 Call me to discuss your requirements



Cuneo Piedmontese  
 HEART • HEALTHY • BEEF

Pedigree + Commercial  
 Purebreeds For Sale  
 Bulls, cows + yearlings

**Don Knight 0274950535**

**117 Hooper Road, Eureka**



**Maize, Grass  
 Silage & Hay  
 for Sale!**

**Providing Professional Agricultural Contracting Services**



#### Services Include:

- Baling, Round, Big Square & Conventional
- Spraying
- Grass Silage – Chopper & Loader wagons
- Maize Silage – Cultivations, Planting & Harvesting
- Bulk & Hiab Cartage

**Call Jeremy Rothery for inquiries or bookings 027 526 2441**

[www.jclag.co.nz](http://www.jclag.co.nz)





## TAUWHARE HOME KILLS

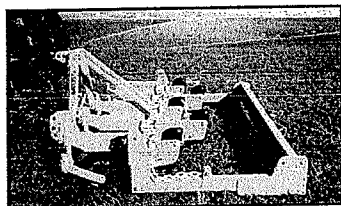
TREVOR & LEONIE BRUNTON

1126 TAUWHARE ROAD

PH: 07 824 0880

FX: 07 824 0809

## SOIL AERATION



Overcome the compaction of soil structures which result in excess moisture on pasture surfaces, shallow root systems and restricted plant growth with our soil aeration service.

Contact: John & Craig  
Reed

Ph: 07 824 1645

## EUREKA POULTRY FARM

13 Hooper Road  
Ph 824 1762  
NIC & MARIA STOLWYK  
Hobby Hens



Young pullets from  
5 weeks to point-of-lay  
Great for lifestylers  
Bagged up chook manure  
Hours Mon-Sat 8-6

## COMPUTERISED BULK SPREADERS LTD

Cartage & Spreading



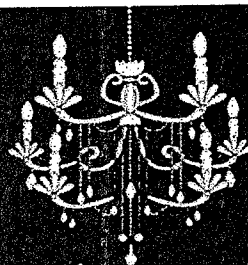
## FERTILIZER, LIME, UREA SPECIALISTS

Competitive Rates

PETER JONES

027 496 3370 07 887 4000

26 years service in the  
Morrinsville district



Rae  
Winter

*Interiors on Hoeka*

GIFTS - INTERIORS - KIDS

196 HOEKA ROAD, RD4  
MATANGI, HAMILTON

FOR AN APPOINTMENT  
CONTACT ME

029 886 6983

interiorsonhoek@gmail.com



safe water fast

Premium water tank cleaning and purification  
without the premium price tag

Resolve smells, bad tastes and contamination  
No purchasing replacement water  
No damage to inside of tanks  
100% satisfaction guaranteed

Ministry of Health recommend annual servicing of your collection tanks

When were yours last cleaned?

Craig Nicholson 027 660 5329 0800 SAFE H2O  
cjin@safeh2o.co.nz www.safeh2o.co.nz

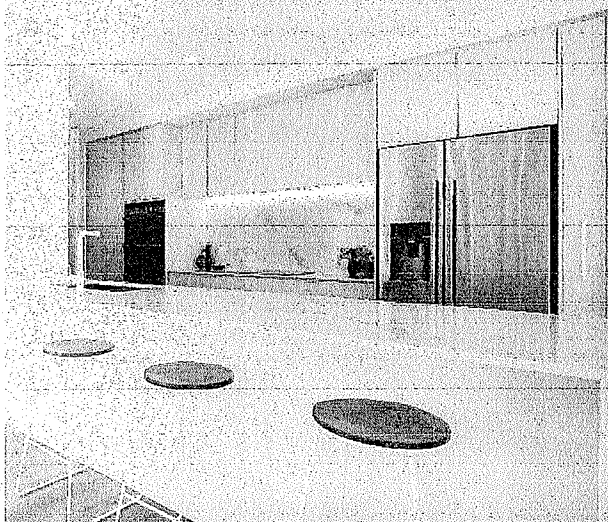
The Kitchen  
*Lady*

For your design,  
manufacture and  
installation needs.  
We come to you.

RENEE MOUAT

021 177 8695

www.thekitchenlady.nz



KITCHENS | VANITIES | LAUNDRIES | WARDROBES

## Hire The Eureka Hall



For Details Contact:

Gail Mayall

07 824 1758

or 021 211 3348

gandb.mayall@gmail.com

# nzgarden sheds

*the best little Sheds around!*

Your **local garden shed supplier** of  
NZ made, self assemble Garden Sheds  
(Zincalume or Colour Steel)

## GET IN TOUCH...

- \* **EASY ASSEMBLY**
- \* **MADE TO LAST!**

### Waikato Shed Company

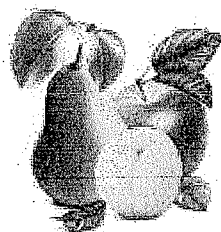
218 Hunter Road, Eureka,  
Hamilton

Phone: 07 824 1045

Email: [sales@nzgardensheds.co.nz](mailto:sales@nzgardensheds.co.nz)

**ENQUIRE FOR A BROCHURE NOW**

## FRESH APPLES & PEARS STONEFRUIT IN SEASON



### NEWSTEAD ORCHARD 552 Morrinsville Road

OPEN MON-SAT.  
W J McMiken & Co  
Morrinsville Road  
Tel. 856 4478

## LAWNMOWING & GARDENING SERVICES

Professional lawn & garden-care service



### Alex & Sharyn MacDonald

**For free no-obligation quote:**

Phone: 027 479 7282  
or 027 308 6781

Email: [macdonaldmowing@gmail.com](mailto:macdonaldmowing@gmail.com)  
[www.lawnandgardenservices.co.nz](http://www.lawnandgardenservices.co.nz)

Residential - Rural - Commercial Mowing  
Spraying - Fertilizing - Weedeating

## ROSS PUMPS

&

Filtration Specialists Ltd



Servicing and installation  
On all types of pumps  
Full Water Treatment  
Service Available

### DAREN ROSS

Tel. 8241 726 or 0274 346 571

Fax. 8241 879

Email: [rosspumps@xtra.co.nz](mailto:rosspumps@xtra.co.nz)

SPYVES PANEL SHOP  
for all  
Panel and paint requirements



### AUTOROBOT CHASSIS and ALIGNMENT MACHINE

Ph Ron or Karen 8241 890

Fax 8241 892

Mob 027 280 0346

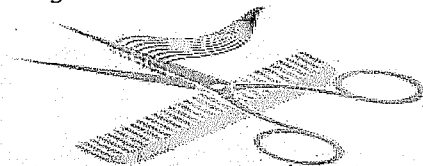
## HAIRFIELDS

HAIR DESIGN

95 HOOPER ROAD

Sharon Laurent

Full salon facility in Eureka  
Total hair care professional  
with many years experience  
Agent for Nutrimetics also



Open Tuesday to Thursday  
Late nights Tues/Thurs  
Tel. 824 1712 or 027 280 5978

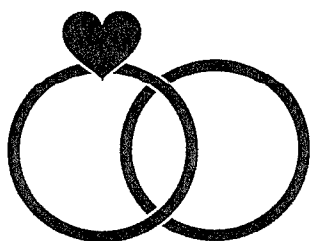
*Sam Ware*

MARRIAGE CELEBRANT

021 897 706

[sam@samwarecelebrant.co.nz](mailto:sam@samwarecelebrant.co.nz)

[www.samwarecelebrant.co.nz](http://www.samwarecelebrant.co.nz)



## BARBARISTA

Your local coffee & food trailer  
Located at the Eureka Hall

### Winter Hours:

Monday - Friday

7am - 2pm

Eftpos available, Credit  
Cards, Paywave &  
ApplePay now  
accepted (Bank fees may apply)

Pre-order with Barb  
021 241 3378



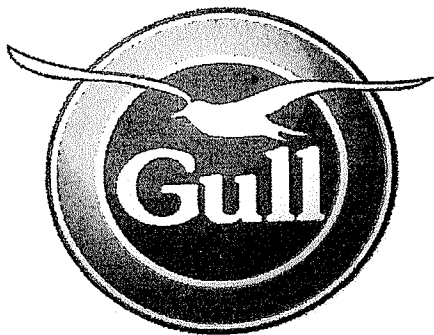
### Pilates Studio In Eureka

Group, private & duet  
sessions available

Mat, Reformer & Barre

Contact: Jas 021 904 806

[facebook.com/thepilatesshedhamilton](https://facebook.com/thepilatesshedhamilton)



# **GULL EUREKA**

**PETROL – DIESEL – LPG - OILS & LUBRICANTS**  
**FARM SUPPLIES – GROCERY ITEMS**

SHOP HOURS: MONDAY TO FRIDAY 7:30AM – 6:00PM  
SATURDAY 8.00AM – 12.00PM

**AND NOW: FUEL 24 X 7 PETROL & DIESEL FROM OPT (OUTDOOR  
PAYMENT TERMINAL)**

**EFTPOS – RD1 FARM SOURCE – FARMLANDS – CARDLINK**

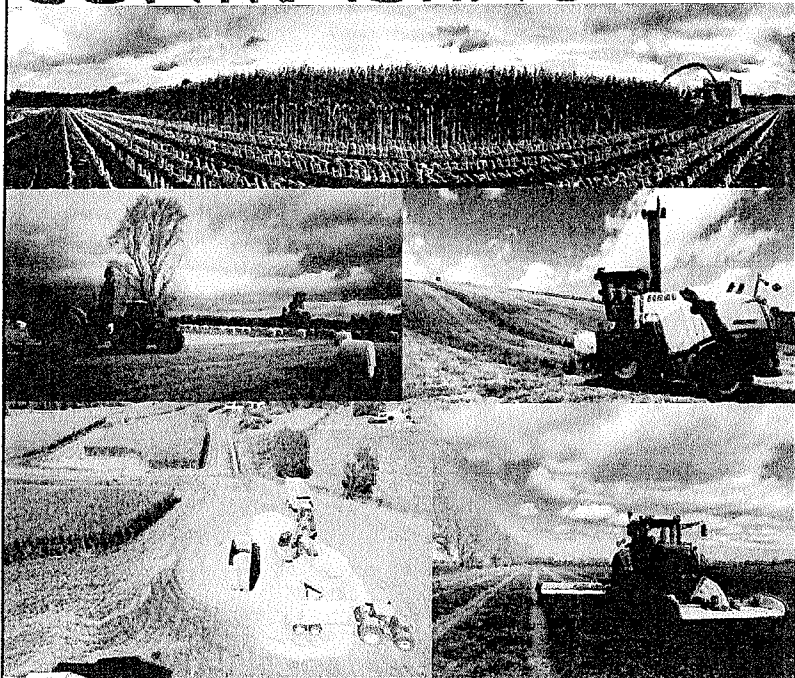
**AMEX – MASTERCARD – VISA**



us on Facebook for discount day and promotional information

## **Walling**

### **CONTRACTING LTD**



For all your:

- Ground Cultivation
- Planting
- Re-Grassing
- Under Sowing
- Grass Silage
- Maize Silage
- Digger &
- Spray Requirements

Ph: 07 824 0894

Rebecca: 027 493 4476

Email:

walling.contracting.ltd@gmail.com





## Local Company based at Eureka

Our sheds are all made from NZ Steel and certified NZ made so by purchasing from us you are supporting more than one New Zealand Business

**Lifestyle**  
**Rural**  
**Industrial**  
**Habitable**  
**Sleepout**

## Waikato Shed Company

218 Hunter Road

Eureka

07 824 1045

[Enquiries@waikatosheds.co.nz](mailto:Enquiries@waikatosheds.co.nz)

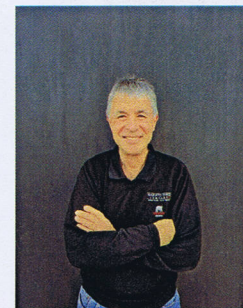
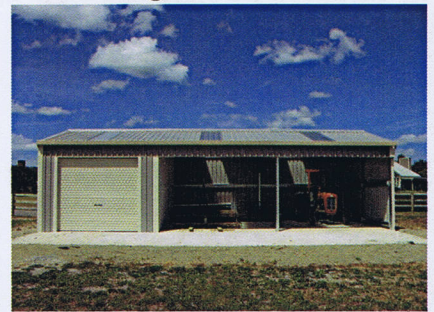
[www.waikatosheds.co.nz](http://www.waikatosheds.co.nz)

# WAIKATO SHED C O M P A N Y ✓✓

## great sheds, done right!

## A Style to suit everyone

With our specialised shed design knowledge, expert guidance and extensive building experience, we can help you to create the ideal shed to suit your style and budget.



Brian Insoll - Owner  
15 years providing shed solutions to the Waikato and beyond. Brian is expanding the business and plans a new (office) building on his Eureka site to showcase the product he is proud to sell.

Full Build & Kitset options enquire now





## Local Company based at Eureka

Our sheds are all made from NZ Steel and certified NZ made so by purchasing from us you are supporting more than one New Zealand Business

**Lifestyle**  
**Rural**  
**Industrial**  
**Habitable**  
**Sleepout**

### **No Bull Sheds**

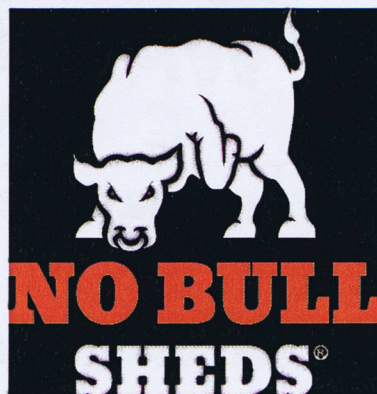
218 Hunter Road

Eureka

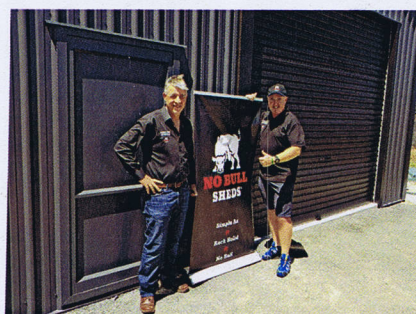
07 824 1045

[Enquiries@nobullsheds.co.nz](mailto:Enquiries@nobullsheds.co.nz)

[www.nobullsheds.co.nz](http://www.nobullsheds.co.nz)



No Bull Sheds has one aim:  
Tough kitset shed systems  
with a keep it simple  
approach



Follow us on Facebook and  
check out our latest  
projects

“No Bull Sheds team were great to deal with,  
in fact they were bl\*\*dy brilliant “

Martin Neagle, Impressions Lighting, Hamilton

**Full Build & Kitset options** enquire now

Every Kitset is supplied with plans, assembly instructions and tips. All this backed up by phone and email support throughout the process.