

Eureka Express

VOL XXXVI no8 Circ 315

September 2015



Daylight Saving 27th September – 3rd April

GUEST EDITORIAL

Guilty guilty guilty guilty guilty guilty guilty guilty guilty

I am the guilty one!!!!!!!

Cleared my mail box yesterday and was excited to see (as I am every month) my edition of Eureka Express, I don't know about you but I really enjoy getting my edition and I sit down with a coffee and have 15 min peace and quiet to read it. The bit I enjoy most is the editorial each month, so I opened up my copy and realised straight away the editorial missing, I thought "oh how dumb" then the penny dropped, crikey I was supposed to write it this month. Lin rang and asked me nearly a month ago if I would and after a little protest I said yes I would, be straight onto it, I said, well with calving in full swing and lambing started I clean forgot, then on Tuesday night Lin rang and reminded me, I said 'oh yeah that's right, look I'm on ambulance duty tonight, but I'm bound to have a spare 15 min, I will get right onto it.' Well as usual when you need a spare 15 min it didn't happen, I ended up crawling into bed at 1 am for 4 hours sleep and then off on another job at 5 am and finally finished my shift at 6 am.

So in a nutshell that's why none of you had the pleasure of reading an editorial this month so hopefully you enjoy my one this month, hopefully it is doubly good.

So my husband and I and our 3 children have been in the district for 24 years and still love living here. We are dairy farmers (with our farm in Te Awamutu) and Agriculture Contractors based here in Eureka and we live in Friedlander Rd.

All our children are now off our hands with our eldest daughter married and working in the contracting business, our second daughter is doing her big OE in Europe and currently living in London being a Nanny and our son is working in the contracting business.

In my spare time I am a fully qualified Ambulance Officer and I am employed as a CPO (which means a Casual Paid Officer), so I cover stations from Te Kauwhata to Te Kuiti. I can get texts anytime from 4 am in the morning throughout the day asking me to go to a particular station, I then have the choice as to whether or not I want to go.

Shifts run from 6am to 6pm and then from 6pm to 6am and during that whole time we are based on station. If we are in a rural station such as Morrinsville during a night shift we often get the chance to go to bed and have a quick nap. We get allocated 1 meal break during a 12 hour shift but that can be broken for a serious job and they can break our meals twice for that.

We have 4 grade levels for priority on jobs. We have purple which is our most serious jobs as in strong possibility of loss of life, then we get reds, that is chest pains, breathing pains and serious threats to life, then we have orange and greens, that is all our other jobs but no threat to life. In a rural station we average 5 or 6 jobs a shift and on average each job can take anywhere from 20 min to 2 hours. In a city station we can do 7 to 12 jobs a shift but each job average is probable no more than 30 min.

Jobs can vary from difficulty breathing, chest pains, broken bones, car accidents, kids with croup (very common at this time of the year), cardiac arrests, elderly people with all sorts of problems such as broken hips, falls etc, people putting objects in places objects are not supposed to go, stokes, palliative care and the list goes on and on and on. We also cover events in the weekends etc and I in particular cover the motor cross out at Patetonga, but we do everything from Netball, rugby, car racing at Hampton Downs to school cross countries.



One thing for sure with the Ambulance job we are never going to run out of customers. I would highly recommend to you all if you can find the spare cash ring 0800 St John and join up as a member, because the cost of joining a family for a year is basically the same price as having to pay 1 trip in the ambulance. Very cheap insurance trust me, at least 4 times a day I pick up people and when we ask if they are members we get the same story, 'gosh we have been meaning to join or my membership just ran out I must get onto it'. And at the same time you are helping a great cause because we get no government funding.

Now on another subject for all you ladies out there, if you are part of the ever growing Facebook world then there is the most amazing site that I would highly recommend you join and it is called

Farming Mums NZ

Farming Mums of New Zealand Hub

'Farming Mums NZ'. It is unreal, it is a closed group and no men allowed, we discuss everything from calving and lambing rearing issues, to cooking tips and recipes to marital issues to payout issues and depression issues, children things from craft ideas to welcoming new bubs and grandchildren to funny things kids to do on the farm. We also have a classified section where we can buy and sell, I have bought some real bargains for the farm lately. They are currently in the throes of putting together their own recipe book. Now as part of this group there is a lady on there that makes all her own household cleaners, she has offered to have a day at Eureka hall where all ladies will be invited. She is doing this for free and the wonderful hall committee has also donated the use of the hall for free. She is going to teach us all how to make our own household cleaners using everyday products available easily, she is hoping it will help us all save money with this current dairy situation. So keep an eye out for the date and come along and have some fun.

The last issue I want to talk about and something that is currently affecting a lot of farmers at the moment is depression. Now you can laugh it off all you like but it is real and serious, this payout is scary to say the least and at times like this it is important for us all to work together. Nothing, and I mean nothing, is worth your life and the problems don't go away they just get a whole lot bigger and worse for the partner left behind. Just remember not the dairy company, not the bank or anyone can take your breath away so why should you. It is very important over the next 12 months to talk with each other, that is partners, neighbours etc and just keep a general eye on things. If you think something is not quite right act fast. I was talking to a lady the other day whose sharemilker had had a major breakdown and she said the dairy company and the rural support trust were amazing and stepped in immediately to help. So please, I see too much in my ambulance job lately to know this is serious, LOOK OUT FOR EACH OTHER.



Well that's it for me, hopefully for at least a year, so I hope you enjoyed my bit and if you want to know anything about the ambulance life or you could be interested in joining as a volunteer then please contact me.

Becky Walling

SNIPPETS



WELCOME TO EUREKA:

to Kieran and Sheena Thompson who purchased their 1442 Tauwhare Road section in March 2013. They started building in April 2013. The process took a lot longer than it should have but as of August 2013 they had a sand pad where Kieran proposed to Sheena on the site of the "house to be", all captured by a professional photographer as he had sneakily arranged a Couples photoshoot! 10 out of 10 for creativity, Kieran, and having the greatest images of the proposal afterwards!! They finally moved in March 2014 with a wedding plan. The plan was for February this year and was an amazing day for all.



Kieran is an engineer and Sheena is a nutritionist and personal trainer. Sheena is self-employed and her company is "Fit 4 Consumption". If you are looking for a healthy meal plan, or personalised exercise sessions you can contact her on sheena@fit4consumption.co.nz or 0211523262. Her website is www.fit4consumption.co.nz. She is also pregnancy certified so for pregnant women or those looking to get back into exercise after child birth she is the only pregnancy certified trainer in the Waikato. A warm welcome to you both

ENGAGEMENT CONGRATULATIONS: To Hayley Clarkin, daughter of Bernie and Jenny Clarkin of Schollum Road, and Dave Booth of Wellington, who became engaged recently in France. Hayley and Dave met some years ago at Otago University and are presently living and working in London. Best wishes to you both.

IT IS FAREWELL TO EUREKA: To Dianne McIntyre. After just on 37 years on Platt Road, Dianne has sold her home and business, Newstead Service Centre, and is moving to Morrinsville. The Eureka Express committee thanks Dianne sincerely for all her years so willingly delivering the Expresses on Platt Road, and wishes her well in her move. Diane will be greatly missed by all her neighbours and clients.

AND IT IS FAREWELL ALSO to the Goulding family of Friedlander Road who have sold their property and are moving into Hamilton. Richard, Jill, Michael, Sean, Fraser and Lindsay have lived in Eureka for 20 years and we wish them well in their new home. Jill is another past EE supporter whom we thank for her time on the committee and as a deliverer.

IN LOVING MEMORY

Brita

Deepest sympathy is extended to Colin Duncan (Eureka Motors) on the death of his much loved partner, Brita Jacobson after her 11 month battle with cancer on Monday September 21st. Our thoughts and love are very much with Colin at this sad time.

David Savage

It is with great shock and sadness we record the tragic death of David Savage in Gosforth, England on 5 September. To David's father, Graehame, and stepmother, Colleen, of Holland Road, and his sister Ann and family, goes our deepest sympathy in their heart breaking loss. Aged 42, David grew up on Hunter Road and is fondly remembered by all his Eureka school mates and their families. As a young man he set off to explore the world and had settled in the north-east of England with his partner, Donna, and two young children, Jak, 6, and Erin, 4. Tragically David lost his life when he was stabbed to death near his home. Our thoughts are very much with his family at this sad time.

Kath Spyve

Sincere Condolences are extended to Ron and Karen Spyve and family of Platt Road on the recent death of Ron's dear Mum, Mrs Kathleen Mary Spyve (nee Jones). Kath was born in Eureka at the Jones family farm on Tauwhare Road on 23 October 1923. Her father bought the farm in 1919 after serving in the First World War. She was the fifth oldest of seven children born to William and Blanche Jones – Elsie, Blanche, Bill, Muriel, Kath, Vincent and Margaret. Kath and her siblings all attended Eureka School in the 1920s and 30s. Kath married Raymond (Hec) Spyve in June 1947. Hec was one of the first tanker drivers at Matangi Factory and was well known to the farming community in the Eureka-Newstead area. Kath and Hec had four sons, Ray (deceased), Bill, Ron and Paul. Kath and Hec lived in Matangi for over 20 years before moving into Hamilton. Hec died suddenly in 1987. Kath lived in their Fairview Downs home for 32 years before moving to Sydney to live with her youngest son Paul in 2005. She passed away peacefully on 26 August 2015 after a sudden illness, aged 91 years.

Dan Loader

Another past Eureka identity died recently. Dan Loader lived on Schollum Road for more than 20 years where he worked for Wally and Val Pollock. Dan and Vorn (deceased) had two daughters, Alma-Jane and Denise, who grew up and went to school in Eureka. A keen indoor bowler, Dan stayed on in Eureka for a few years after retiring from farming. Dan passed away in Thames on September 6th at the age of 82.

Anne Masters

Yet another founding family of Eureka lost a much loved member on September 12. Deepest sympathy is extended to Ralph Masters and family on the death of their dear wife, mother and nana, Anne. Ralph was born and raised in Eureka and he and Anne raised their family of four, Lyn, Janene, Jeff and Paul on Eureka Road continuing the family tradition of attending Eureka School. Ralph and Anne sold their farm, cut into five blocks, in 1990 and moved into Hamilton. Anne is fondly remembered by all who knew her.

MARKET PLACE

WANTED TO RENT:

2 – 3 bedroom house with garage. Please phone Phil 0211844991 or Cheryl 8241851

BABYSITTERS AVAILABLE:

Baby Sitting

Baby Sitting available. Cookie

Rothbury, Call:

824 1188



BABYSITTER

Local babysitter available

Danielle Herrmann (year 13 student)

1308 Tauwhare Road

Available weekends and evenings

~\$10/hour

0220747175

PLANT SALE: THE MATANGI GARDEN CLUB

Annual Plant Sale

Will be held at the Matangi Hall

Saturday October 10th

9am to 12 noon

Plants, produce, cakes and scrumptious morning tea. (No Eftpos)

Mini Bale Silage

We do the complete job from mowing to stacking or just rake bale & wrap if you prefer.

Joe Macfarlane

Contact: 027 4770021 / 07 8562996

Address: 135B Marshmeadow Road

Email: j.macfarlane@xtra.co.nz



Tauwhare School

PO Box 100, Hamilton 3207 New Zealand

admin@tauwhare.school.nz

t 07 824 0864



Roll: 175



Our Multi-Purpose Room is beautifully reclad and up to code. It has had a fresh coat of paint throughout. The new staffroom looks like it has always belonged there! It is so much bigger and brighter and we have more than one toilet for our staff of 15 to use.

Daffodil Competition

Our children had a great time preparing their daffodils for the annual daffodil competition. We didn't win an award this year, but the children did enjoy

themselves and have learned so much about this beautiful spring flower.



Auckland Zoo Trip

What a wonderful trip we had to the Auckland Zoo as part of our study on enclosures and enrichment.

We took 175 children, 15 staff and 60 parents, grandparents, aunts, pre-schoolers – we are truly blessed to have such incredible support from our school community.

Specialist Programmes

Children love it when experts come in to help with their learning. This month we have had:

LIFE Ed - Nicki ran a fantastic programme in the Caravan, which resulted in lots of learning for the children and the teachers. The difference between being

Rude, Mean or Bullying; Respond or React and how the brain works were some of the topics covered. Harold was once again very popular.

Project Energise - Renee re-ran the 550m fitness challenge and provided us with comparative results from pre-cross country and post cross country. Classes showed visible improvement in fitness.

Cricket - NZ Cricket spent a morning with classes showing different ways of playing cricket which were all great fun. The children all received a bag with sunnies, a ball and some pencils.

Calf Club & Group Day

Our annual Calf Club is being held on Friday 16th October and we are hosting Group Day this year on Wednesday 21st October. We would love to see you there!

Out of Zone Enrolments for 2016

Tauwhare Board of Trustees invites applications from parents who wish to enrol their sons and daughters for next year. The board has determined that 10 places are likely to be available for out of zone students next year. The exact number of places will depend on the number of applications received from students who live within the school's home zone.

For students seeking enrolment for 2016, the deadline for receipt of applications for out of zone places is October 23rd 2015. Please see our website for application forms. www.tauwhare.school.nz Should there be more than 10 applications a ballot will be held on 30th October 2016.

Parents of students who live within the home zone and intend enrolling their child at any time during the next year should notify the school, if they have not already done so, to assist the school to plan appropriately for next year. Students who live in the home zone are automatically entitled to enrol at the school.

Please see our website for more information, or ring school 07 8240 864

SPORTS EQUIPMENT
FUNDRAISER

Sunday 8th November
Walton Golf Club

Grab 4 mates and
register a team.

Cost \$100 per team
Fancy Dress or \$120 if
not dressed up.

Registration forms at
School office
Phone 8240864
Or E-mail Jo Buckley
scott.buckley@xtra.co.nz
Entries close 26th
October

TAUWHARE
SCHOOL
AMBROSE
GOLF
TOURNAMENT

Free food served during the day.

Drinks available on the bar-carts.

Prize Giving &
quick fire
raffles in
clubrooms
afterwards

Tauwhare School

RD7 Hamilton 3287 New Zealand
e admin@tauwhare.school.nz
t 07 824 0864



Pukeko Preschool October 2015

We welcome Liza Adams to our staff team. Liza will be covering lunches on Wednesdays, Thursdays and Fridays, and relieving as needed.

Gosh you know it is spring when lambs come to pick up the children in readiness for calf club, the children organise to create ice blocks and we end up with paint ice blocks for painting and freshly squeezed orange ice blocks for afternoon tea. The children have begun harvesting the vegetable garden and the purple broccoli stalks didn't last long when the children realised how yummy they are to eat raw.

Our focus is all about caring for others, ourselves and the environment. It has been such a delight to observe the caring that naturally happens at preschool. The older children are so caring of the younger. We have also observed how this continues at school as the older children look after the younger children on the field at morning tea and lunch time.

Pukeko Preschool now has a Facebook page – please look for us under 'Pukeko Preschool in Tauwhare' and 'like' our page to keep up with what's happening.

Remember our 3 session times:

Main session: 8.45am – 2.45pm

Short session: 8.45am – 1.00pm

Long session: 8.15am – 3.30pm

Call in and see us on the grounds of Tauwhare School, or contact us by phone 8240860, or email pukekopreschool@xtra.co.nz. And don't forget to check out our website **Error! Hyperlink reference not valid.**



Tauwhare Playgroup

We have had a very exciting few weeks at playgroup, with lots of activities and visitors. Thanks to everyone who comes along and helps to make this such an enjoyable group.

Term 3 of the school year ends on 25 September 2015. We will be off for two weeks, then the first playgroup of Term 4 will be on Thursday 15 October. We will be back in the multipurpose room at the school, which is very exciting. We are looking forward to getting a wider range of our toys and equipment out of our shed at the school, and also to spending more time playing outside, as the weather warms up.

The children had a blast during a recent playgroup trip to the Community Play Session at the YMCA in Hamilton. This is a 45 minute session where preschoolers can play on the range of sports equipment in the stadium at the YMCA. They could climb, swing, walk across balance beams, jump on a trampoline or on the huge bouncy castle. For only \$2 a child, this was definitely worth a visit, the children loved it.

Afterwards, we had morning tea at the Verandah cafe at Hamilton Lake – the girls look so grown up in this photo, enjoying fluffies!

We had a visit from a Tauwhare local, Sheena, who is a personal trainer and nutritionist. Sheena came along to meet the parents and carers, and talk about her services. Great to meet a local person offering these services, you can check out Sheena on her Facebook page, Fit 4 Consumption.

In the last week of Term 3, we will be having a visit from Sam the Party Pony. Sam will be coming to playgroup with his owner, Marion Rogerson. The children are fascinated by the horse that lives in the paddock next to the church, so we can't wait to see how they react to Sam! He is a miniature pony, so is perfect for giving preschoolers rides – he is just the right size for them!

If you'd like to book Sam for your children's party, please search for Sam the Party Pony on Facebook for details.

About Tauwhare Playgroup:

Tauwhare playgroup is friendly and fun group, where parents, grandparents, caregivers, children and babies meet together in a relaxed environment.

Our playgroup is free to attend, and our activities include:

- Music and singing
- Imaginative play
- Outdoor and free play
- Art and craft activities
- Trips to interesting places.



WELCOME FROM NEWSTEAD MODEL COUNTRY SCHOOL

Over the past week our school has learnt about and experienced 'excellence' across a range of areas, both at school and outside of school.

Last Friday, our Cross Country team performed extremely well at the Interschool Cross Country event held at Porritt Stadium against other schools from the South East Hamilton area. We had a large number of placing including a **clean sweep of 1st, 2nd and 3rd in the year 6 Girls race and 1st in the Year 6 Boys race.**

Congratulations to **Mitchell Keightley and Millie Wallace** who won the Country Schools Cup for Year 6 Boy and Girl.

On Saturday, The Great Waikato Spelling Bee was held, where three of our children, Mitchell Keightley, Hamish Wilke and Sarah Crowther performed admirably against other children from the Waikato. They were so brave going up on stage and spelling difficult words in front of an audience of over 200 people. Well done.

NEWSTEAD AGRICULTURAL DAY: 17th October 2015

Ag Day Helpers

We really need your help for this fantastic day to run smoothly. People are required for a variety of jobs including setup, BBQs, cake stall and selling food. The day runs from approximately 9am to 1pm. If you can spare just one hour of your day it would be greatly appreciated. Please let Chrissy know in the office or text me as soon as possible. Help from past students most welcome.

GROUP DAY 2015

Mark your calendars: Wednesday 21st October at Tauwhare School.

125 Year Jubilee Information

Newstead School and District 125 Year Jubilee (1890-2015)

20 & 21 November 2015

Registrations are now open for the 125th Jubilee, being held on 20-21 November 2015. Come and help Newstead celebrate 125 years. A fantastic chance to remember, reflect on and renew our community spirit within the Newstead Community and District.

The registration form is available from: Chrissy at Newstead School office or the school website www.newstead.school.nz

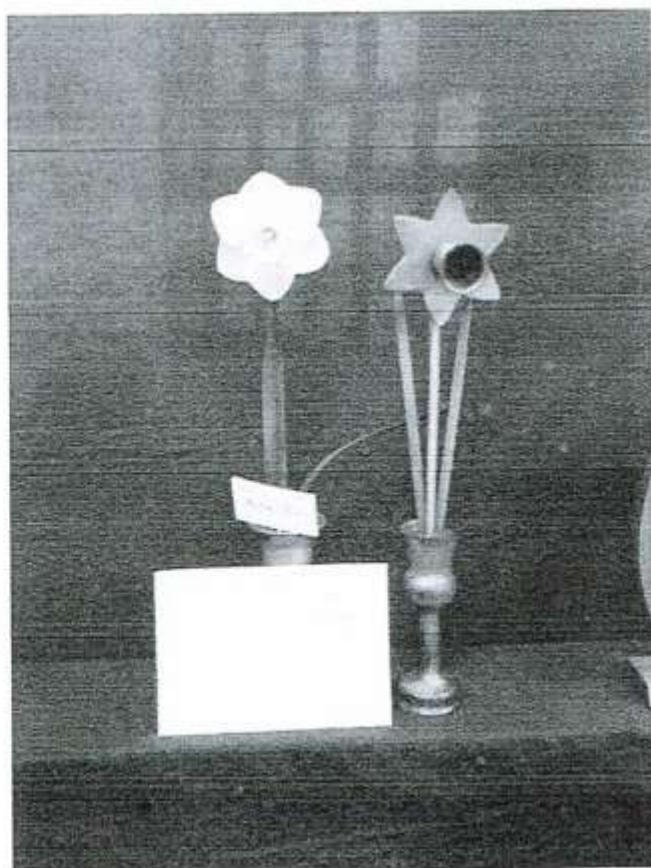
Any enquiries to: Jubilee Facebook Page: www.facebook.com/newsteadjubilee2015 or email: newsteadjubilee2015@gmail.com

We also had an exciting morning opening our Time Capsule where ex-pupils and community members watched as the capsule was lifted from under a big rock and the contents shared with everyone. Some very interesting letters were shared. All of these items are available to view at school in our Eureka Room.

Don't forget to view our Facebook page for up to date photos of all the latest happenings and celebrations of our learning.

- *View our school website for all school related and class information, notices, sports events and draws, etc.*

Great day for Newstead at the Interschool Daffodil Show. We managed to win all three trophies: Challenge Trophy for best six daffodils, Points Trophy for aggregate points over whole show, Champion Bloom for the show. We'll done Newstead! Fantastic work from those who staged our beautiful daffodils.



Share Your Favourite Recipe With Us

Do you have a favourite recipe – maybe it is one that you created or maybe it is one that has been handed down the family. If so we would love you to share it with us and we can include it in one a future edition of the Eureka Express. Send them to editor@eurekaexpress.co.nz



We are currently meeting at St Andrews Church in Tauwhare from 9am-12 noon every Thursday during school term time. (This is a change of venue to our normal meeting place at Tauwhare School's Multipurpose Room, whilst they are having major building work carried out).

Please bring along a small plate of food for the children's shared morning tea, and we provide hot drinks for parents and caregivers.

For more information, contact: Pippa on 07 824 0846

Like us on Facebook and keep up-to-date with what is happening.

About Playgroups:

No child is too young for playgroup. All children from 0-5 years, including babies, love new experiences and benefit from developing sensory, social and communication skills through activities at playgroup.

Children like playgroup because they can:

- Participate in new experiences
- Develop and increase their social skills
- Learn sharing, co-operation and simple routines
- Interact with other adults and children in a safe environment
- Enjoy learning more about their world



Adults also benefit from playgroup - a time to talk, make friends and share experiences, while children learn through their play experiences.

Adults like playgroup because they can:

- Meet other local families and develop new friendships
- Relax and talk in a friendly environment
- Share experiences and ideas
- Play with children and nurture a spirit of co-operation
- Take up opportunities for personal development

RAINFALL

	August 2015	Year to 31 st August
Total (mm)	129.5	808.5
Average (1994-2015)	113	794
Difference	+ 16.5	+ 14.5

Rainfall recorded on 17 days.



TAUWHARE INDOOR BOWLING CLUB

Welcome to readers of our August – September news. The final round-up of news for the season will be next month – October.

Our annual match with Matangi for the Erin Rose Bowl has been played and resulted in a win for Matangi. The Matangi-Tauwhare team of 8 ladies challenged St Andrews (Hamilton) for the Greenfield shield. Our team won – B. Meads and R. Bargh were in the team. However, the Matangi-Tauwhare team (8 men and 8 ladies) were not so victorious in their challenge for the Devon Art Challenge Cup. Tauwhare players in the team were J & R Arnold, B. Meads, Jim & R Bargh.

It is all good news with Eastern's Moore Cup games. Two more wins have been recorded by Eastern against Hamilton Red and Hamilton Green. Best of luck in the final match against Cambridge on September 20th. Well done all Eastern Players, particularly to Tauwhare team members B Meads, J. Hooper and Jim Bargh.

Now I digress. At the end of August I travelled to Wellington with granddaughter, Melita (Waikato Junior Singles Champion) and her mother, Delwyn, to the NZ Champion of Champions Singles followed by the NZ Secondary Schools Singles Championship, which was held at the North Wellington Indoor Bowls Hall at Titahi Bay. All told 27 Districts were represented. Well done Melita who was 3rd equal. Melita was selected to play in the Northern zone Vs Southern zone match for the McLaughlin Trophy. This was played after dinner and was a good way to relax a little after a very tense day. Instead of hand-shakes at the end of the evening, it was High-fives all round. We arrived back at our Lower Hutt Hotel at 9pm with great plans for an early night ready for 'blast off' at 7.30am for Titahi Bay next morning for the Secondary School Singles. They say dreams are free – enough said!

Sixty competitors from Northland to Invercargill took part in the Singles. Melita qualified and reached the last 8 – very well done again. The whole tournament showed that we have some very talented young bowlers nation-wide, and we hope they will continue to play bowls in years to come. The camaraderie and sportsmanship was very evident throughout the whole tournament.

RESULTS

20.8.2015 Club Night

Winners – R Coxon D Appleton

Runners up – Jim Bargh J Cottle

27.8.2015 Sattrup Trophy

Winners R Coxon L Verner.

Runners up Jim Bargh N Stolwyk

10.9.2015 Club Night (Tamahere visit Progressive)

Winners R Bargh (Skips) H Bargh (Leads)

Runners up L Verner (Skips) D Appleton (Leads)

Up Coming Events

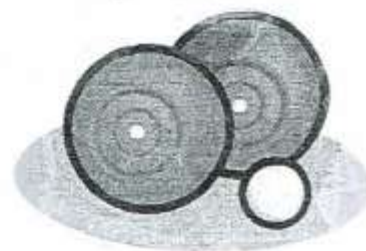
1.10.2015 AGM and Prize giving (Plate please)

8.10.2015 Christmas Rinks Tournament (\$5 and plate please)

Out and About

17.8.2015 Puketaha Open Tournament:

Winners I Spencer J Cottle Glenda Goodare John Bargh



Till next month – Good bowling everyone.

Robin Bargh: ph 824 1819

IN YOUR GARDEN

Well, spring is here. Plant anything you are considering to plant now. E.g.: potatoes, roses, fruit trees, hedge plants, vegetables for the summer and citrus, the list goes on.

A good reason to get planting is a possible dry spell due to hit us in November or December. By then it is too late to think about planting.

Let's talk about Citrus, their benefits and needs in terms of how they grow and the best ways to look after a citrus tree. Most citrus's are grafted on trifoliate stock, some grown by cutting mainly Meyer lemons which do well in a large container and fruits within 2 years of planting.

There are 3 most popular lemons:

- Meyer is thin skinned and mild.
- Eureka and Lisbon Thick skinned and quite tart in taste, suitable for marmalade.

Several varieties of mandarins are also suitable for large pots. Also are easy peel and seedless. Good for kids lunches. Satsuma is superseded by several other new types of mandarins.

Oranges: Some varieties can be potted. Best Seedless is the best seedless variety in oranges. There are a lot of choices in types of oranges as well.

New Zealand Grapefruit, most popular with several new varieties and some not so new.

Limes, Tahitian are the most popular which has green fruit. There is also Rangpur which is another Lime variety that is orange with the same flavour as the Tahitian. Kaffir Lime is grown for its aromatic leaves which are used for cooking. Its fruit is only ornamental. Most citrus trees brought at garden centres and nurseries have lots of new growth when you purchase. The reason for this is the plants are mostly under plastic canopies. When planting the above trees, do not tease the roots.

At Roach's we keep our citrus in the open all winter, this makes the tree hardy and will transplant easily. The tree will not require frost protection the following winter.

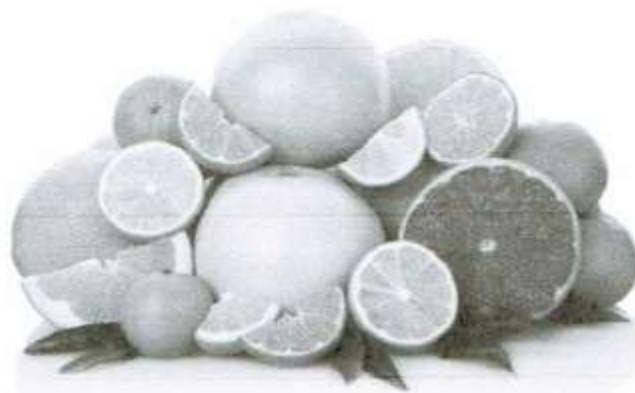
Please note, the most susceptible to frost is Limes when the tree is small.

At Roach's we have over 1 hundred trees to choose from, Retailing for only \$25.00 each. Some are over 1 metre and bushy. We also stock Roses, Fruit trees including Louisa plums, citrus, hedge plants and have a large range of vegetable seedlings. Poplar trees to plant out now, only \$1.50 each.

Mushroom Compost, guaranteed weed free, no bark. Plants can be planted in it. Mushroom Compost retails at \$10.00 per large 45 litre bag. \$29.00 per scoop, 3 scoops = cubic metre. 2 scoops to the average trailer. Please note compost is light to shovel and will break down to the same colour as your soil.

For more info phone Mike on 0274 955 183. Nursery open Monday – Friday, 8am – 4pm. Weekends by arrangement.

Happy Gardening
Mike



Ladies Night

7:30pm, Friday, 13th November 2015
Eureka Hall



After the success of the Ladies Night's we held in 2012 & 2013 we had a break for a year **BUT DUE TO POPULAR DEMAND LADIES NIGHT IS BACK!**

The fabulous stalls from previous years will be back **PLUS** more. Check out the October edition of the Eureka Express to see who will be there.

All Ladies Welcome

You will receive a complimentary glass of wine on arrival and there will also be some finger food available.

Everyone that shows up goes in a free draw to win prizes from our stall holders, there will be 1 prize from each supplier so you have good chance to go home with a prize.

This is an evening for ladies - free from husbands and children! There is no pressure to buy so just come along and enjoy and night out!

So put a note in your diary now for the 13th November 2015 and...

**Bring A Friend, Or Two, OR Even
Three For A Great Night Out**



Local builder
Tauwhare Road resident
Registered Tradesman

Concrete work
 New homes
 Renovations
 Alterations
 Farm Buildings
 Decks
 Fences
 Bathrooms
 Kitchens
 Roofing

30 years building experience

Craig Griffin Builders Limited

Phone Mobile: 0272792682
 Phone/Fax After Hours: 8241607
 email: cgbuilders@ihug.co.nz

Scanlan & Jones

Specialists in:

- ✓ Wood Fire Sales
- ✓ Wood Fire Installation/Repairs
- ✓ Hearth Manufacturers
- ✓ Outdoor Fire Installations
- ✓ Chimney Sweeping
- ✓ Heat Transfer Kits — Sales & Installation
- ✓ Producer Statements



Registered Installers
 Over 20+ Years Experience
 Free Quotes

Contact Justin & Brendon
0274 834 267 (day)

A/Hrs: 07 824 0950

Email: scanlan.jones@xtra.co.nz

Member of New Zealand
 Heating Association



Wilkins Contracting Ltd

Working for the Land, Working for You

Matt Wilkins

021 574 510; 07 824 1877

- Small bale wrapped haylage
- Conventional hay baling
- Liquid fertilising
- Under sowing



Agricultural contracting for lifestyle blocks

www.lifestyleagriculturalcontracting.co.nz

Lawn Mowing And Gardening Services



Maurice Smith

For free no-obligation quote:

Ph: (07) 8241948 Mobile: 0274797282

Email: mfsmith@clear.net.nz

Ride-on mowing specialists.
Give your lawn the perfect finish

SPYVES PANEL SHOP

for all
 Panel and paint requirements



**AUTOROBOT CHASSIS
 and
 ALIGNMENT MACHINE**

Ph Ron or Karen 8241 890

Fax 8241 892

Mob 027 280 0346

HAIRFIELDS

HAIR DESIGN

95 HOOPER ROAD

Sharon Laurent

Full salon facility in Eureka
 Total hair care professional
 with many years experience
 Agent for Nutrimetics also



Open Tuesday to Thursday
 Late nights Tues/Thurs
 Tel. 824 1712 or 027 280 5978

ROSS PUMPS

&

Filtration Specialists Ltd



Servicing and installation
 On all types of pumps
 Full Water Treatment
 Service Available

DAREN ROSS

Tel. 8241 726 or 0274 346 571

Fax. 8241 879

Email: rosspumps@xtra.co.nz



Hair With Ease

YOUR MOBILE SALON

Women's Cuts
 Colours/Foils
 Kid's Cuts
 Men's Cuts
 Eyelash Tinting
 Eyebrow Tinting

Call Nicola For Appointments

PH: 0275580583

EMAIL: NICOLA@HAIRWITHEASE.CO.NZ

Wayne Brown Painting



**Trademan: Painting & Application of
 Specialised Sprayed Coatings
 LBP External Plastering**

Wayne Brown

389 Scotsman Valley Road
 Tauwhare
 RD1, Morrinsville 3371

Mobile: 027 3197 497

After Hours: (07) 8240806

Email: wayne_paula@xtra.co.nz



TREVOR & LEONIE BRUNTON

1126 TAUWHARE ROAD

PH: 07 824 0880

Fx: 07 824 0809

COMPUTERISED BULK SPREADERS LTD

Cartage & Spreading



FERTILIZER, LIME, UREA SPECIALISTS

Competitive Rates

PETER JONES

027 496 3370 07 887 4000

26 years service in the
Morrinsville district

nzgarden sheds

the best little Sheds around!

Your **local garden shed supplier** of
NZ made, self assemble Garden Sheds
(Zincalume or Colour Steel)

GET IN TOUCH...

- * **EASY ASSEMBLY**
- * **MADE TO LAST!**

Waikato Shed Company

218 Hunter Road, Eureka,
Hamilton

Phone: 07 824 1045

Email: sales@nzcgardensheds.co.nz

ENQUIRE FOR A BROCHURE NOW

CALF COVERS

"Canvas, Jute, or satin
lined for Calf Club"

I also manufacture horse covers, trailer covers or any other kind of cover you may want. Good quality, P.V.C. horse gear bags — can also be used for dive bags. Good quality at reasonable prices.

**Phone Narelle Pollock
824 0736**



EUREKA POULTRY FARM

13 Hooper Road

Ph 824 1762

NIC & MARIA STOLWYK

Hobby Hens



Young pullets from
5 weeks to point-of-lay
Great for lifestylers
Bagged up chook manure
Hours Mon-Sat 8-6

THE BEAUTY HOUSE

Beauty Clinic & Gorgeous Giftwares

For all your Beauty needs plus a
fantastic range of quality Giftware
(EFT-POS available)

dermatech



Jacqueline Jones
Beautician (RCompN)
1092b Tauwhare Road
Tauwhare Village

P: 07 8240950 M: 0274 853985

E: thebeautyhouse@xtra.co.nz



TRADELINE DECORATORS

Greg Godden 021 1584430

goddens@outlook.co.nz

RD7, Eureka Road

- * Ceiling repaints to wooden joinery & Walls
- * New homes, additions & alterations
- * Interior & exterior painting
- * Small commercials & offices
- * Airless spray painting, brush & roller
- * Waterblasting of substrates

For all your painting needs

*We specialist in quality,
it's not hard*

BMW Parts & Repairs



Mosen Euro Parts

10 Wickham Street
Hamilton

Kerry Meehan

Ph: 846 2972 / 824 1148

M: 021 165 4038

Email: moseneuro@wave.co.nz

Web: www.moseneuroparts.co.nz

FRESH APPLES & PEARS STONEFRUIT IN SEASON



**NEWSTEAD ORCHARD
552 Morrinsville Road**

OPEN MON-SAT.
W J McMiken & Co
Morrinsville Road
Tel. 856 4478

LADIES A PLATE

Fresh Apple Cake

This cake is awesome...

- 1 cup vegetable oil
- 2 cup sugar
- 3 eggs
- 3 cup flour
- 1 tsp baking soda
- 2 tsp vanilla extract
- 1 cup chopped pecans
- 3 cup peeled and chopped apples

Preheat oven to 350 degrees. Grease a 9 x 13" pan. Combine oil, sugar, and eggs. Stir in flour and baking soda. Add vanilla, pecans, and apples. Spread in prepared pan and bake for 45-50 minutes. Cool for 2 hours. Then prepare frosting.

Frosting

- 1/2 cup butter
- 1 cup brown sugar, packed
- 1/4 cup evaporated milk
- 1/2 tsp vanilla

Boil all ingredients in a small saucepan for 2 minutes. Set pan in bowl filled with ice water. Beat icing until of spreading consistency. Spread over top of cake.



Cass's Rhubarb and White Chocolate Cake

Cass's Tip: "I like to leave the rhubarb in chunks and use white choc buttons so you bite into big bits of rhubarb and chocolate!"

Ingredients:

- 1 1/4 cups of finely chopped uncooked rhubarb
- 100g of good quality white choc chips
- 2 1/2 cups of self-raising flour
- 1 cup of caster sugar
- 1 teaspoon of vanilla essence
- 2 eggs, lightly beaten
- 1/2 cup of plain yoghurt
- 125g of butter, melted

Method:

1. Combine the rhubarb, chocolate, flour and sugar in one bowl.
2. Combine the vanilla, egg, yoghurt and butter in another bowl.
3. Stir the dry and wet ingredients together until just combined.
4. Bake at 180 degrees Celsius for 1hr or until cooked.



Development of New Zealand Standard Time

New Zealand was one of the first countries in the world to officially adopt a nationally observed standard time. New Zealand Mean Time, adopted on 2 November 1868, was set at 11 hours 30 minutes ahead of Greenwich Mean Time. Greenwich Mean Time was established by British Railways in the 1840s but was not made Great Britain's standard time until 1880.

In 1941, due to emergency regulations in the Second World War, clocks were advanced half an hour in New Zealand. This advance was made permanent by the Standard Time Act 1945. The Act provided that New Zealand Standard Time was set 12 hours in advance of Greenwich Mean Time or Universal Time.

In the late 1940s the development of the first atomic clock was announced and several laboratories began atomic time scales. A new time scale based on the readings of atomic clocks, known as Co-ordinated Universal Time, was adopted internationally in 1972.

"New Zealand Standard Time" is currently defined in the Time Act 1974 as meaning 12 hours in advance of Co-ordinated Universal Time. The time for the Chatham Islands was set 45 minutes in advance of New Zealand Standard Time.

Origins of Daylight Saving in New Zealand

Entomologist and astronomer George Hudson was the earliest known advocate of daylight saving in New Zealand. Hudson presented a paper to the Wellington Philosophical Society in 1895 advocating for seasonal time adjustment. However society members ridiculed his idea. It was not until 1909 that the issue was next raised, by Parliamentarian Hon Sir Thomas Sidey who argued for putting clocks forward by one hour during summer so that there would be an additional hour of daylight in the evenings.

In that year he introduced a Member's Bill to put this idea into effect. The Bill was rejected, but Sidey was persistent, reintroducing it every year for the next 20 years. It almost became law in 1915 and again in 1926 when it was passed by the House of Representatives, but was rejected by the Legislative Council (which was New Zealand's upper house of Parliament until 1951). During the second reading of his Summer Time Bill in 1926, Sidey argued that:

the extra hour of daylight after working-hours during the summer months is of especial value to indoor workers and the community as a whole as it gives one additional hour for recreation of all kinds, whether playing games or working in garden plots...one cannot overlook the economic advantages that will also accrue. There will be a saving in the consumption of artificial light.

Much of the debate in the House of Representatives centered on the impact on people in rural areas and women in particular. Opponents of the Bill commented that:

[Summer Time] will bring no happiness to the women of New Zealand who live in the backblocks. [the Bill] does not make the case for now requiring the wife of the working-man to get up an hour earlier in order to get her husband away to his work.

In 1927 Sidey was successful. The passing of the Summer Time Act that year authorised the advancement of clocks by one hour between 6 November 1927 and 4 March 1928. The Act was only operative for one year, and when the Summer Time Act 1928 was passed extending the period of summer time from 14 October 1928 to 17 March 1929, the period of advancement was changed to just half an hour. This made New Zealand Summer Time 12 hours in advance of Greenwich Mean Time.

The Summer Time Act 1929 enacted the provision of a 30-minute time advance from the second Sunday in October to the third Sunday in March the following year. In 1933 the period was extended from the first Sunday in September to the last Sunday in April of the following year. This continued until 1941,



when the period of Summer Time was extended by emergency regulations to cover the whole year. This change was made permanent in 1946 by the Standard Time Act.

Cartoon of T.K Sidey from New Zealand Free Lance, 30 September 1911. Courtesy of www.nzhistory.net.nz

Daylight Saving Since 1974

The Time Act 1974 provided that the Governor-General could declare, by Order in Council, a period of Daylight Time (daylight saving). Daylight Time is fixed as a one-hour advance on New Zealand Standard Time, and in the case of the Chatham Islands, is fixed at one hour forty-five minutes ahead of New Zealand Standard Time.

The public response to a trial period of daylight saving in 1974/75 was generally favourable and the New Zealand Time Order 1975 fixed the period of daylight saving from the last Sunday in October each year to the first Sunday in March of the year following.

In 1985, the Department of Internal Affairs undertook a comprehensive survey of public attitudes towards daylight saving and its effects on work, recreation and society. The results of the survey demonstrated that 76% of the population wanted daylight saving either continued or extended.

In 1988, as a consequence of the survey and further feedback from the public, the Minister of Internal Affairs arranged for a trial period of extended daylight saving to be held from the second Sunday in October to the third Sunday in March. The Minister invited the public to write to him with their views on the five-week extension.

Again the public response was generally favourable and a new Daylight Time Order was made in 1990. It declared that Daylight Time would run for 24 weeks from the first Sunday in October each year until the third Sunday in March of the following year.

Daylight Saving Review

The end of daylight saving in 2006 generated public debate, which led to a review of the period. A petition to extend daylight saving was presented to Parliament with an estimated 42,000 signatures.

The Minister of Internal Affairs Hon Rick Barker announced on 30 April 2007 that the period of daylight saving would be extended to run from the last Sunday in September until the first Sunday in April.

Article Courtesy of The Department of Internal Affairs



EUREKA EXPRESS

ADVERTISING RATES		CONTACTS – Gail or Gayle	
Classified Advertisements	Free	Gail Mayall (Editor)	Gayle Orr (Treasurer)
Small Business Advertisements	\$10 / month	70 Eureka Road	1139 SH26
• x 10 insertions	\$80 / year	Ph 8241 758	R D 6, HAMILTON 3286
One Third Page Advertisement	\$15 / month	e-mail:	Ph 8241 713
• x 10 insertions	\$120 / year	editor@eurekaexpress.co.nz	e-mail: gorr@extra.co.nz
One Half Page Advertisement	\$20 / month		
• x 10 insertions	\$160 / year		

CO Comment

As we near the end of the first month in spring, pasture growth is just starting to match feed demand with “proper” spring growth rates still to arrive and the wet conditions are unhelpful for feeding the herd. This year balance date’s arrival in most areas was tentative, not strong, with growth rates hovering around 40-50 kgDM/ha/day, with most farms being 1-2 weeks later than usual. Keeping the rotation as long as possible, i.e. 25-30 days rather than 20-21 days, is ideal to allow pastures more time at their maximum growth rate, providing more certainty about future pasture supply. Based on the current ryegrass leaf emergence rate it is still risky to speed up the rotation to feed the herd, with many farms barely reaching the 2 leaf stage before grazing, one reason why pasture growth rates are slow for this time of year. With young daughter tillers now appearing in the pastures, N fertiliser is encouraged to help these tillers grow up and establish quickly as well as assist with pasture growth.

DairyNZ’s nationwide feed review visits, providing an assessment of feed allocation and grazing management in early spring had seen over 800 farms take up the offer at the end of August. The majority of farmers just needed to make a few tweaks to their pasture management, with a 1/3 of farmers spot on, and 10% referred to a rural professional for continued support. Feed allowance was the biggest issue, with many overestimating the amount of dry matter a cow can eat in early lactation and over allocating feed allowances to the milking herd. A 470kg cow’s intake gradually increases from 12kg at the start of calving to 17-18kg by balance date. Yet many were allocating 18kgDM/cow/day or more from the 1st week of calving, causing high post-grazing residuals and unnecessary feeding of expensive supplements.

Over the past month we have held reproduction and feed fieldays to ensure we get cows in calf successfully and get better returns from all feed used on farm – key focus areas in a low payout season. It was great to see the engagement and interaction from farmers throughout the different sessions, sharing their success or unsuccessful stories, thoughts and lessons with others. As one farmer put it “we do, what we have learnt from others”. The key messages from these fieldays were:

- As mating approaches us, feeding supplements does not add improvement to in calf rates as long as there is adequate pasture
- Heat detection – low cost, highly beneficial
- At the current milk price, optimal feed management could add \$333/ha to operating profit
- To grow and eat as much pasture as possible, post-grazing residuals, pre-grazing cover and leaf stage must be maintained within the target ranges – to help with this, DairyNZ has developed a grazing management booklet. Order a copy from dairynz.co.nz/pasture-management
- Checklist for profitable feeding of supplement
 - Know why you are feeding supplements, making sure you understand the true value of what you are feeding
 - Calculate the milk and \$ response to the supplements
- Feed management relies on people – make sure the skills and communication systems within the farm team are in place

The calendar has been inundated with various farmer gatherings and functions over the last few months, so it is a reassuring feeling to know there is plenty of support and free advice out there.

All the best to those who start mating in the next couple of weeks.

Upcoming DairyNZ events to put in your calendar:

- The local Eureka Discussion Group is on the 2nd Tuesday of each month, from 11am – 1.30pm. The next group is on Tuesday 13th October, host still to be confirmed. For more details please visit the [events](#) page on the DairyNZ website.

Until next month...

Jaimee Morgan
DairyNZ Consulting Officer Hamilton North
021 245 8055



Reintroducing Newstead Vets

Newstead Vets is a 30year old business that like many New Zealand businesses had humble beginnings in 'a shed beside the house'. This shed belonged to Gwyneth Verkerk and to this day still houses the Verkerk vehicles just behind the clinics current location. Dr Verkerk left clinical practice behind many years ago to dedicate herself to research and can now be credited with many of the significant improvements made to the welfare of dairy cows in New Zealand amongst many other career achievements.

Dr Verkerk maintained ownership of the clinic up until July 2014 when it was sold to two of her employees, Gabriel Hagard and Bart Karalus who formed a partnership to start a new chapter in its long life story.

This partnership has seen many changes take place within the clinic, some obvious ones, and some not so obvious ones. We would like to take the opportunity to inform of these changes and reintroduce ourselves to the locals.



Gabriel Hagard is London born and a graduate of Bristol University, and spent many years honing his broad-ranging surgical and medical skills at the RSPCA in London, a busy and colourful small animal charity hospital. He has now worked at Newstead vets for 8 years and moved to New Zealand with his kiwi wife who is Newstead Vets Head nurse Mia Hagard. Mia also 'did her time' in the London RSPCA so is also highly skilled and trained to the high standards demanded of nurses in the United Kingdom.



Bart Karalus is a Massey University graduate, has 10 years experience and spent 5 of these years at a similarly busy and just as colourful small animal charity hospital in the East end of Glasgow, Scotland called the PDSA. He has been with Newstead Vets since 2013 and is a Hamilton local returning from an OE to raise a family with his Scottish wife Stephanie.

The first change to take place was to reduce the vet numbers to 2 full time equivalents, and increase the nursing ratio to a minimum of 2 nurses per vet. This model requires a very skilled nursing team to perform more than your average as far as tasks and procedures go in order to make the system work, and thus our nursing team has been built with this mind. Nurses must be competent in an array of fields and familiar with many different machines and equipment in order to assist the surgical vet maximally and allow the efficient running of the hospital.

Since taking over in 2014, the clinic has acquired new and improved equipment, allowing us to deliver an even higher standard of care, and even safer anaesthetics when general anaesthesia is required.

Newstead Vets has always had a focus on investing in the core assets that are required to reach a diagnosis of your pets problems, with less focus on the building that houses them, which coincidentally is leased from Dr Verkerk still. In saying this, we have redesigned our logo, put up new signage, and started painting the inside of the clinic to freshen it up. What you may be wondering is what exactly are these 'core assests' and what actually goes on 'out back'.

Well, starting with anaesthesia, now in our possession is a human anaesthetic machine from Anglesea Hospital, the private surgical hospital in Hamilton city centre. The main differences between this machine and our previous one are a mechanical ventilator (a luxury afforded usually only to specialist facilities – VSG in Auckland and Massey university in Palmerston North), and a highly accurate and reliable anaesthetic monitoring computer, which means even safer anaesthetics for your pets.

Also borrowed from human anaesthetic practice at Newstead Vets is a patient warming device called a Bear Hugger which circulates warm air around the patient whilst anaesthetised, minimising the loss of heat that occurs under anaesthesia, especially in our smaller pets which have a large surface area. This ensures much faster recoveries once the procedure is completed, as well as avoiding the many other detrimental effects of hypothermia. The use of this system will hopefully become the norm in New Zealand as the difference compared to previous patient warming devices and techniques has been vast. We have trialed many devices and combinations of devices from heat pads, blankets, wrapping extremities in foil blankets, hot water bottles, intravenous fluid warmers and even machines that heat and humidify the inhalation gases. We are now satisfied that we have invested in the most effective patient warming system available.

We have also invested in a top quality and again 'human grade' ultrasound machine. This machine was purchased from Med Imaging on Von Tempsky St and was scanning the expecting mothers of Huntly up until its relocation to Newstead Vets late last year. The image quality is phenomenal and we now feel absolutely spoiled to have the use of this machine at our disposal. It allows pregnancy scanning down to 21 days, as well more detailed imaging of the smaller abdominal structures such as the pancreas and adrenal glands.

Inherited from the previous owner is our digital X-ray machine which delivers high quality and high resolution radiographs, and permanently does away with the much loathed manual system which was both time consuming and hazardous, requiring the use of chemicals to develop the films. This formerly rated as one of the least favourite nursing duties.

We hope to continue developing our individual skills and knowledge, and hope this is reflected in our practice for years to come.



Newstead Veterinary Services
161 Morrinsville Rd (SH26)
Phone (07) 856-4522 Fax (07) 8569487

www.newsteadvets.co.nz

Vaccinating Calves

Much to everyone's surprise, researchers have discovered calves on dairy farms, where herds being vaccinated against leptospirosis, were getting leptospirosis! This was happening before Christmas. For this reason we are now recommending that calves are vaccinated against leptospirosis **before Christmas**. They should already be getting vaccinated against clostridial diseases (eg blackleg and tetanus). When we use Ultravac 7 in 1 we will be protecting them from both leptospirosis and the clostridial disease. This is a 7 in 1 vaccine. We recommend **two** vaccinations **before** Christmas.

Dislocated Hips—can be successfully repaired!

It is that time of year again when cows are bulling and riding each other. Sometimes they slip and fall and their hip joint comes out of its socket. It is possible to sometimes put them back into place. If we can get to them within 24 hours of doing it and the cow is still walking around, it may be possible to fix it. In one case last year, Jan Bert and Patricia cut the leg open over the hip joint, placed the joint back into the socket and then stitched it back up. This cow recovered nicely and is still in the herd (last we heard).

Scouring Yearlings - may not be worms!

We have been seeing a few scouring yearlings lately which have tested positive for **Coccidiosis**. If your yearlings are scouring, it would be a good idea to bring in some faecal samples from the worst affected so we can test them for both worms and Coccidia—it is not an expensive test and you will have results within 24 hours. Coccidia is not a bacteria or a worm, but a protozoa which invades the lining of the large intestine where they do their damage. The most effective treatment is drenching with a product called **Baycox**.

No Bull—Make Sure Your Bulls Are Protected

Check that your bulls have been tested for **BVD** and vaccinated twice, 4 weeks apart. Make sure the last vaccination is given at least 10 days before they join the herd.

Problems can occur if you use an unvaccinated bull which is naïve to BVD and he mates a cow carrying the BVD virus. He may be mildly ill for a day or two (you may not even notice) but more critically he will be **infertile for a month or 2 and that would be a disaster!!**



**Café: Restaurant: Brewery:
Wedding Venue:
Private Functions**

130 Woodside Road
Matangi

Hours

Wednesday – Sunday
10.00am till 3.30pm

Open for Dinner

3rd Thursday of the month from 5.30pm
Bookings essential

P: 07 8295826

E: info@woodsideestate.co.nz

Hire The Eureka Hall



**For Details
Contact
Gail Mayall
07 824 1758**

Do Business Locally and Keep Locals in Business



Eureka Storage

Many options from 9m2 - 307m2
Short term + long term
Call me to discuss your requirements



Cuneo Piedmontese

HEART-HEALTHY-BEEF

Pedigree + Commercial
Purebreeds For Sale
Bulls, cows + yearlings

Don Knight 0274950535

117 Hooper Road, Eureka

**BELLES
&
BRIDES**
MAKEUP | HAIR | BEAUTY

Belles & Brides is the Waikato's premiere on-location beauty service

We specialise in weddings, special occasions and at-home pamper parties
and provide professional beauty services direct to you at your location.

Please check out our website for further
information. The link to our regularly updated
Facebook page can be found on our website –
please become a fan!

www.bellesandbrides.co.nz

Ph: (07) 8241852 or 022 6717588



Image by Nicola Inglis Photography

Maurice Jackson

phone 027 271 6846

jackson55@xtra.co.nz

Based in Eureka



MAK

CONTRACTING LTD

Agriculture Contract Spraying For Urea & Eczema, Power Harrowing, Air Seeder
Experienced Rural And Lifestyle Block Fencer



CTASTM



Specialists in:

- Professional Internet based systems development
- Web Site Development, Domains and Hosting
- TXT and Email Alerts and Reminders
- TXT Shortcodes for your business or club
- Flight Status by TXTing your Flight to 8808
- Live Video and Audio Streaming on the Internet

Phone: 07 824 1025
Email: grant@ctas.co.nz



Go to www.ctas.co.nz for more information



Associate Member of IT Professionals NZ



Newstead Veterinary Services

161 Morrinsville Rd (SH26)

Phone (07) 856-4522 Fax (07) 8569487

email: admin@newsteadvets.co.nz

www.newsteadvets.co.nz

We offer a comprehensive range of services for dogs, cats and small pets.

- Puppy pre-school classes
- Comprehensive range of pet care products and pet food
- Nutritional advice with onsite pet dietician and free weight clinic
- Cremation with a local pet crematorium, with optional return of ashes
- Isolation ward
- NZVA Microchipping Accredited Practice
- MAF Accredited vets for pet export certificates to Australia
- Ample parking

We believe that pets are important members of your family.



Building Partnerships with Farmers

Our Services:

- Maize & Grass Silage
- Full Cultivation
- Cartage – Truck and Tractor
- Hay, High Moisture Hay & Haylage
- Digger

We Offer:

- A Professional Service
- Experienced Drivers
- Quality Machinery

**Maize
Silage
for sale**

*Don't delay...
book your job with us today!*

(07) 824 1186

mel@mcfarlanecontracting.co.nz

870 State Highway 26, Newstead
RD 6, Hamilton



JBVISSE VETS

For your Livestock & Pets

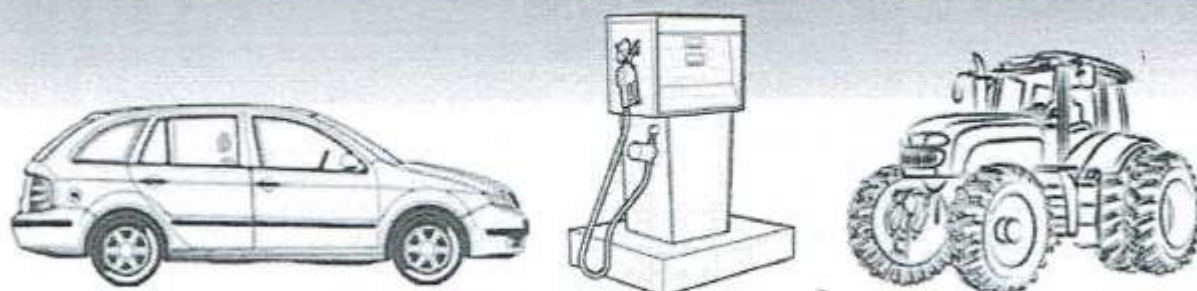
07889 0414
0800VISSE

For a veterinary practice who truly cares about the well being of your animals, JBVisserVets are the right choice. Our professional and courteous staff are available 24 hours a day to provide leading edge health care and advice to ensure your livestock and family pets are always in their best health.



47 Lorne Street
Morrinsville 3300
Email: jbvisservets@xtra.co.nz
www.jbvisservets.co.nz

For your WOF and Service needs...
For your Petrol and Farming needs...



Come see us...

EUREKA MOTORS

1291 Morrinsville Rd, Eureka

07 824 1773

Hours: Mon-Fri 7:30am to 6pm

Sat 8am to 12 noon

GOLDSEAL
Rustproof
Specialists

WALLING CONTRACTING LTD

'YOUR PROVEN LOCAL ONE STOP CONTRACTORS'

WE CAN OFFER YOU THE FOLLOWING SERVICES:



- *Grass Silage
- *Ploughing
- *Rotary Hoeing
- *Ripping
- *Undersowing
- *Baling & Wrapping
- *Digger (12 Ton)
- *Grass Crop Sales

- *Maize Silage
- *Power Harrowing
- *Discing
- *Maize Planting
- *Roller Drilling
- *Power Harrow/Seedbox
- *Shavings & Sawdust
- *Maize Crop Sales



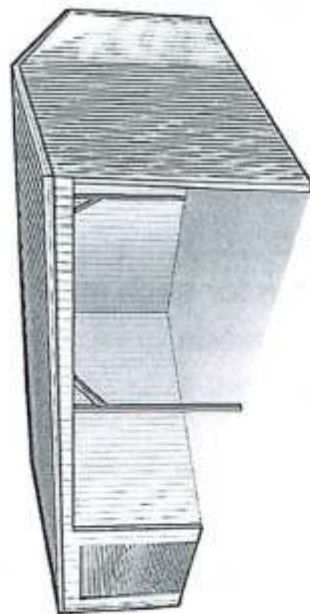
FOR ALL YOUR CONTRACTING NEEDS

PHONE LEN OR BECKY

ON

824 0894 (anytime)

ANGUS



TESTIMONIAL

"We've now had two sheds built by Waikato Sheds for my specific requirements, they are both of a high standard. They're well put together and the process of working with the Waikato Sheds team went really well. The service was exceptional - no problems at all."

- Abby & Jane Keighley, Tolapai

KEY FEATURES

- Steel gutters & PVC downpipes
- Safety mesh & Wytex in roof
- Clear Span (no internal poles)
- 1 x Roller door size as per below
- Barge, opening & corner flashings

PRICE EXAMPLES FOR SHED KITSETS

SIZE (span x length x stud height)	ZINCALUME	COLOURSTEEL
7 x 12 x 3m (2.5m x 3.0m Roller Door)	\$12,100 +gst \$13,915 incl	\$13,500 +gst \$15,525 incl
9 x 12 x 3.5m (3.0m x 3.0m Roller Door)	\$15,600 +gst \$17,940 incl	\$17,200 +gst \$19,780 incl
9 x 18 x 4m (3.3m x 3.0m Roller Door)	\$21,400 +gst \$24,610 incl	\$23,400 +gst \$26,910 incl
12 x 20 x 4m (3.3m x 3.0m Roller Door)	\$30,400 +gst \$34,980 incl	\$32,900 +gst \$37,835 incl

Disclaimer: The above prices are valid at the time of printing and are subject to change with individual site conditions, please check our website for latest pricing (www.nobullsheds.co.nz). *Cost of roller door delivery subject to location.

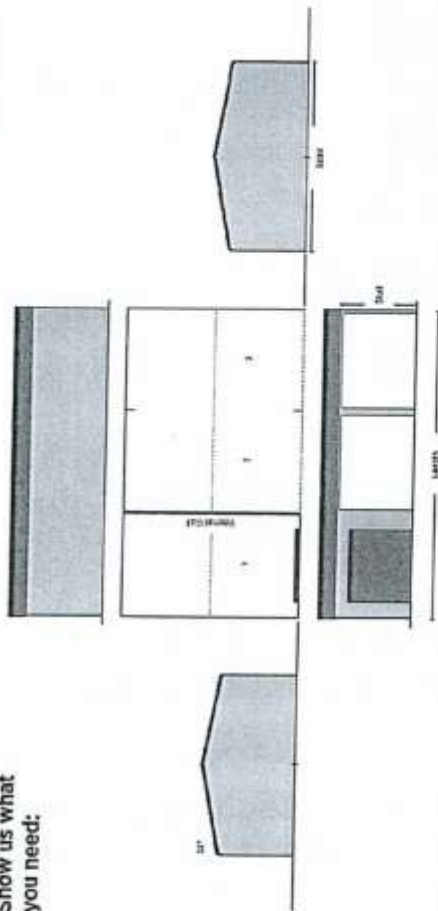
Easy to build • Plans & engineering included • Delivery to nearest national freight depot included

Email, fax or post to us with your requirements and contact details.

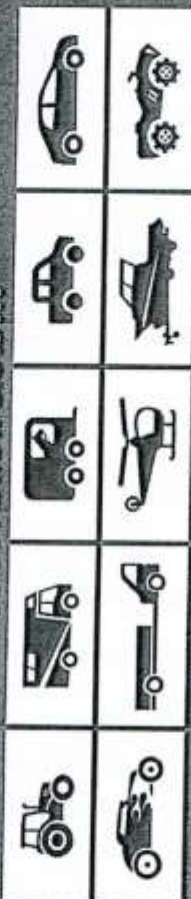
USE LAYOUT BELOW TO MODIFY THE SHED:

ANGUS

Show us what you need:



WHAT STUFF HAVE YOU GOT & HOW BIG IS IT?



OTHER REQUIREMENTS & MODIFICATIONS:

CONTACT US

Head Office:
218 Hunter Road, Eureka
RD7, Hamilton 3287
Phone: 07 824 1045
Fax: 07 824 1046
Freephone 0508 NO BULL
(0508 662 855)
Email: info@nobullsheds.co.nz
Website: www.nobullsheds.co.nz

