

EUREKA EXPRESS

VOL XLIX No. 9 Circ 315

OCTOBER 2015



**CONGRATULATIONS TO
THE ALL BLACKS...
RUGBY WORLD CUP
WINNERS 2015!**

Ladies Night

7:30pm, Friday, 13th November 2015
Eureka Hall



After the success of the Ladies Night's we held in 2012 & 2013 we had a break for a year **BUT DUE TO POPULAR DEMAND LADIES NIGHT IS BACK!**

The fabulous stalls from previous years will be back **PLUS** more, including:

Tupperware
Scrapbooking
Nutrimetics
Preserves & Chutneys

Freeset Bags
Enjo Cleaning Cloths
Lorraine Lee Linen

Intimo Lingerie
Avon
Jewellery

All Ladies Welcome

You will receive a complimentary glass of wine on arrival and there will also be some nibbles available.

Everyone that shows up goes in a free draw to win prizes from our stall holders, there will be 1 prize from each supplier so you have a good chance to go home with a prize.

This is an evening for ladies - free from husbands and children! There is no pressure to buy so just come along and enjoy a night out!

So put a note in your diary now for the 13th November 2015 and...

**Bring A Friend, Or Two, OR Even
Three For A Great Night Out!**

Guest Editorial

Last week I received a friendly reminder from Lin Buckley that I had promised to write a guest editorial for the Eureka Express..... She phoned me *before* calving season and at that time I told her that I was willing to do it, but only *AFTER* calving season. Little did I know how time can fly.....

Luckily for me, Becky Walling had to make good on a previous promise, so she did the month of October....

And now, nearing the end of October, here I sit, in front of the computer, desperately trying to think of something to write that the readers may find remotely interesting.....

I've been surfing the net, googled our Waikato town Eureka, and guess what: It turns out we're just *outside* the Eureka district. From the time we moved to this farm (June 2001) my husband Andre and I always had a difference of opinion, whether we belonged to Newstead or Eureka.... He was quite adamant that we live in the EUREKA district. It turns out he is **WRONG!** I, on the other hand always thought that we belonged to **NEWSTEAD**, and you know what? I am **WRONG** as well! Our farm is just outside both districts, according to google maps we live in the **MATANGI** district. And our neighbours across the road belong to **TAUWHARE**.... So, something good comes out of writing this editorial..... We know now that our farm is on the boundary of **NEWSTEAD, MATANGI, TAUWHARE AND EUREKA**....

Coming back to Eureka, I have to admit that we always enjoy reading the guest editorials of other people each month, so I'll make an effort to make it (hopefully) interesting...

We (The Wisse's) moved to NZ with our 6 children in 2000. After having received our visa for NZ, we sold our farm in Alberta, Canada, and arrived on the 1st of June at Auckland Airport, with 15 suitcases, a Pram, a porta cot and our energetic family of 6 kids, ranging from 1 year till 13 years old. We were intending to look for, and possibly buy, a farm in NZ, as farming is something we've done our whole life. We tend to joke that's this the only thing we can do....

After arriving here, we found out that almost all farms change hands on the 1st of June, so that meant that we were just too late to buy a farm for that season. We bought a Van, put all the suitcases in Storage and travelled with our family around the North Island for almost two months. During that time we all came to the conclusion that we wanted to live and farm in the Waikato, and settled in Hamilton. Shortly after that we bought our farm at 879 State Highway 26, and it became HOME instantly!!! This was *THE PLACE* to raise our 6 children, driving them to and from school, sport and church events...

Writing this editorial makes me aware how we have lived life to the fullest for the past 15 years in NZ. Four of our kids are happily married and so far we have 6 grand kids with two more on the way..... They all live in a radius of a 20 minutes' drive from our farm, so we see them quite often. Only two 'kids' (young adults) are still living at home, which makes us aware that we indeed have grown older...

The internet has become a lot more reliable, and affordable during our time here.... Wonderful to stay in touch with family and friends, although the use of all those smart phones can be very distracting..... Where are the good, old times where you could visit with someone, undisturbed?

However, growing up in the country still has a huge advantage for our young children. Andre and I just attended this past week the Calf club day at the rural school of our oldest grand-daughter. How wonderful to see all those children who devoted themselves to rearing and caring for a calf, lamb or kid. How proud they were of showing their animals off. All the pets performed beautifully and reflected the hard work (parents...) put in! The judges were brilliant – very supportive, kind and patient with the children.... A good PET is more worth than the most expensive toy....

One of the other advantages of living out of the city is that the beauty of nature is at our fingertips. Especially this time of the year is beautiful: all around us trees, plants, and scrubs are growing, blossoming and blooming.... Please, take time out to enjoy this... Life will always be busy anyway....

This is the life we love, living here in the country... Who needs to exercise, when grass needs to be cut, gardens tended to, hedges trimmed.... We hope, that after writing this editorial, we are **LOCALS** now!!!

Andre and Hilly Wisse



SNIPPETS



DONATION THANKS TO: The Tauwhare Indoor Bowling Club and Rob Appleton.

BIRTHS. NEW BABY CONGRATULATIONS TO: Stuart van Vugt and Karen Schultz of Eureka Road, on the arrival of their darling baby girl, Catalina, on October 2nd. A dear wee sister for Santino. Best wishes to all.

WELCOME TO EUREKA: to Nadia Ward and Wilson Stead and their little daughter, Mirela 12 mths, who are now residing on Platt Road, ex Dianne McIntyre's home. Nadia is managing Newstead Service Centre for her parents Nick and Tami Ward of Cambridge who are the new owners of the business. Nadia and Wilson hail from Te Kowhai and plan a February wedding. A warm welcome to you all. Phone 8241 807.

IRISH DANCING SUCCESS: Congratulations to local dancers, Renee and Ashleigh Mayall, Danielle Gordon, Lucy and Ellie Holden, Tiana West, Danni Allen, Saskia Broekhuizen, and Amiee Davis, of the Fox School of Irish Dance, who performed very creditably at the recent 2015 National Championships held in Auckland. They competed well in both the Teams and Individual Age Groups. Congratulations also to their dance tutor Robyn Holden who teaches classes at Tauwhare Hall.

FIREWORKS: As Guy Fawkes looms please spare a thought for all the neighbourhood animals, both large and small, who can be terrified and may injure themselves if the noise and activity is too close by. Do advise your neighbours if celebrations are planned.

LOCAL PHONE LIST: An updated phone list is enclosed with your Express. Thanks go to Linda Hooper for her considerable assistance with its compiling. Please phone Gail, 8241758 to register any mistakes or omissions.

LADIES NIGHT: We look forward to seeing as many local ladies as possible on Friday 13th November, as per enclosed notice. Do come along and meet and greet your neighbours and enjoy a convivial and enjoyable evening.

RAINFALL

	September 2015	Year to 30 th September
Total (mm)	144.5	953
Average (1994-2015)	107	901.5
Difference	+ 37.5	+ 51.5

Rainfall recorded on 17 days.

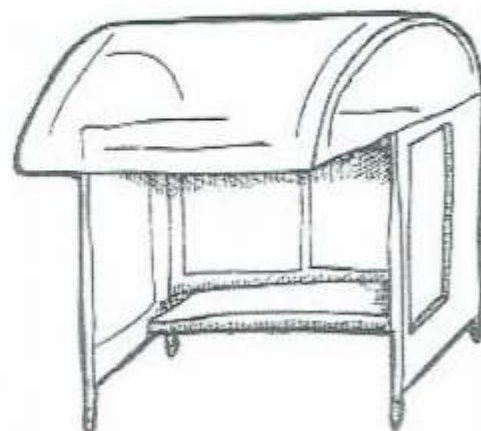


OUR NEW BUS SHELTER AT THE HALL

It's finished and it's the smartest one around.

When Brian Insoll offered to donate and build a bus shelter for the children who catch the Tauwhare School bus at the Hall, neither he nor I (as Chair of the Community Planning Committee) had any idea just how complex and lengthy the process would be.

First we had to decide whether to put it on Hunter Road or SH26. We conducted a survey through the Express, talked at length to the bus company which runs the service, and decided that overall SH26 would serve best, as it also allowed passengers for the other bus companies to use the shelter. We got the extra road seal for the buses to stop there about 8 years ago!



Then we contacted the District Council as to whether a permit would be needed because it was to be built on Council land. Some months later, and after numerous phone calls and visits by Council staff to the site, they realised we weren't planning a palace, but a small bus shelter! So they sent a letter of approval.

Later, in conjunction with our efforts to get the intersection improved, we also got approval from the NZ Transport Authority (it's on a State Highway).

But by then everyone was having sheds built and Brian and his team were flat out.

But we did get together to decide on the colour scheme, and you will note that it matches that on the Hall these days.

And now it is finished, and the thanks of the Planning and Hall Committees go out to Waikato Sheds for a fantastic job done.

As we are now in the fourth term, I propose to negotiate with the bus company to change the pickup spot starting next year - unless one of the parents who bring kids to the Hall can sort it out with the bus driver in the interim. Over to you!

Sue Edmonds

EUREKA EXPRESS

ADVERTISING RATES		CONTACTS – Gail or Gayle	
Classified Advertisements	Free	Gail Mayall (Editor)	Gayle Orr (Treasurer)
Small Business Advertisements	\$10 / month	70 Eureka Road	1139 SH26
• x 10 insertions	\$30 / year	Ph 8241 758	R D 6, HAMILTON 3286
One Third Page Advertisement	\$15 / month	e-mail:	Ph 8241 713
• x 10 insertions	\$120 / year	editor@eurekaexpress.co.nz	e-mail: gorr@xtre.co.nz
One Half Page Advertisement	\$20 / month		
• x 10 insertions	\$160 / year		

MARKETPLACE:

WANTED: Do you have any fallen trees you would like cut up and taken away or a standing tree you want removed. Wood must be suitable for firewood. Phone Maurice 0274797282.

FARM IMPLEMENTS FOR SALE.

- Steel stock crate 5.50x2.50m
- Haybale loader
- Hay elevator
- Vicon mower 6 disc

Offers please. Phone Barry on 8241853 or 0211409074

BABYSITTERS AVAILABLE:

Baby Sitting

Baby Sitting available. Cookie

Rothbury, Call:

824 11 88



BABYSITTER

Local babysitter available

Danielle Herrmann (year 13 student)

1308 Tauwhare Road

Available weekends and evenings

~\$10/hour

0220747175

Mini Bale Silage

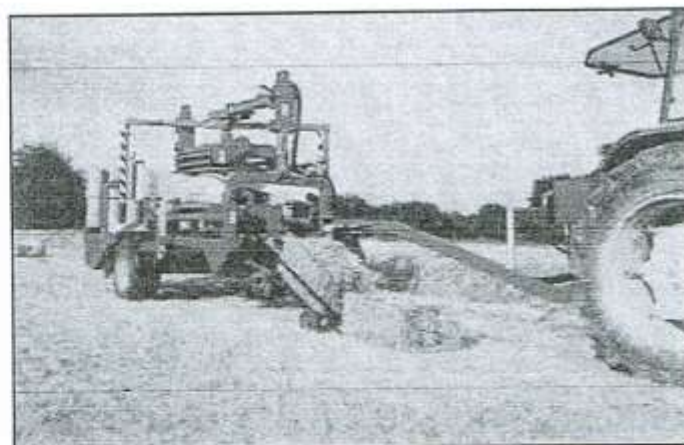
We do the complete job from mowing to stacking or just rake bale & wrap if you prefer.

Joe Macfarlane

Contact: 027 4770021 / 07 8562996

Address: 135B Marshmeadow Road

Email: j.macfarlane@xtra.co.nz



Letter To The Editor...

Hello Eureka Neighbours

As a resident who has animals, I would just like to draw your attention to the fact that it is "that time again". Guy Fawkes is about to frighten the animals again on November 5th and as usual the week before and the week after, weather depending!!!!

I would like to point out that very few animals understand the 'human recreational attitude' and if not conditioned to the subject eg: Gun dogs, then they do not understand bangs and flashing lights that come out of a black sky. They become terrified as they have no idea that this is human's having fun.

Dogs, cats, chickens run for shelter under something. Goats almost strangle themselves as most are tied up. Cows, sheep, llama's etc will huddle together and then stampede often smashing fences and damaging themselves.

Horses and ponies when terrified....Bolt....they do not see what is in front they just run. A few years ago we lost a horse when it galloped through 3 fences and hit the water tank and broke his neck.

Just ask yourself 'What's it all about?' Guy Fawkes tried to blow up the Houses of Parliament and failed but hurt people in the process. Big Business said, "We can make money out of this" They did not care about the animals, babies, old people, others who were involved in war and a bang brings back a lot of hurtful memories. Big business made a lot of money.

Please Eureka-ites, don't bring the noise to the animals in Eureka.....if you really need a buzz, go to town where they have displays and enjoy.

Dinah Booth, an old Eureka resident.



125 Year Jubilee Information

Newstead School and District 125 Year Jubilee (1890-2015)

20 - 21 November 2015



Friday 20 November

6pm-10pm - **Mix n Mingle** at Hamilton Gardens Pavillion.

Saturday 21 November

10am-2.30pm - **Welcome Function** at school, including speeches, photos, and school tours.

6.30pm-11.30pm – **Jubilee Dinner** at Hamilton Gardens Pavilion. Entertainment from Hamilton Big Band.

Commemorative Booklet: A commemorative booklet is being written for the Jubilee, featuring historical information and a great selection of photos from the school and district. If you or your families have any relevant photos from the School or the District that you would like to share for the booklet, please clearly label them and drop them into Chrissy or Lyn Mather at school.

Tauwhare School

RD7 Hamilton 3287 New Zealand
e admin@tauwhare.school.nz
t 07 824 0864



We had the most wonderful Calf Club! The children had worked very hard to have their pets looking and performing brilliantly. There were some lovely examples of resilience and of children supporting each other. That's what it's all about!

GROUP DAY was also held at our school this year. Tauwhare School children competed against competitors from Newstead, Tamahere and Matangi Schools. It was a great day and everyone seemed to have a good time. The animals performed beautifully, making the judges' decisions very difficult. Both days ran so smoothly thanks to Rachael Gordon, who spent weeks organising sponsors, ribbons, stewards, the programme and much more. Thank you also to Paula Brown and the great team of parents who helped Rachael.



POSITION AVAILABLE

We have a position available at our After School Care programme for an After School Care assistant Monday to Thursday. Hours are 3pm – 5pm and the rate of pay is \$15.93 per hour. All enquiries to principal@tauwhare.school.nz

COMING UP AT TAUWHARE SCHOOL

Our Multi-Purpose Room is looking wonderful and the new staffroom is huge! Plenty of room for growth. We can now use the space to rehearse our show and hold the many events coming up, including:

Cluster Schools Tee-Ball Tournament 6th November

City & Country Schools Tee-Ball Tournament 13th November

Cluster Schools Speech Competition 19th November

ALICE THE MUSICAL Our whole school production will be held at the Tauwhare Hall in the first week of December (date to be confirmed). Watch our webpage www.tauwhare.school.nz and Friends of Facebook PTA facebook page for dates and details.

SPORTS EQUIPMENT
FUNDRAISER

Sunday 8th November
Walton Golf Club

Grab 4 mates and
register a team.

Cost \$100 per team
Fancy Dress or \$120 if
not dressed up.

Registration forms at
School office
Phone 8240864
Or E-mail Jo Buckley
scott.buckley@xtra.co.nz
Entries close 26th
October

TAUWHARE
SCHOOL
AMBROSE
GOLF
TOURNAMENT

Free food served during the day.

Drinks available on the bar-carts.

Prize Giving &
quick fire
raffles in
clubrooms
afterwards

Tauwhare School

RD7, Hamilton 3287 New Zealand
e admin@tauwhare.school.nz
t 07 824 0864



Pukeko Preschool November 2015

We had so much fun joining in Calf Club day and Group day at Tauwhare School. Lots of our pre-schoolers borrowed their siblings' or friends' animals for the Preschool parade, and happily received their ribbons. Our children enjoyed walking around seeing all the beautiful animals and watching the judging.

Update on the building

The teachers spent their teacher-only day looking around centres in the Waikato with under-two areas as we are looking into having a small under-two area in our new building. If you are interested in the under-two area please let us know. We have also had the pleasure to have professional development with ChildSpace who gave us plenty of exciting ideas to incorporate into our outside area.

Does anyone have...

We are always on the lookout for inflated truck/ tractor inner tubes, cardboard tubes and old stereos that need fixing by pre-schoolers. Please contact Clare at the preschool if you can help.

Pukeko Preschool now has a Facebook page – please look for us under 'Pukeko Preschool in Tauwhare' and 'like' our page to keep up with what's happening.

Remember our 3 session times:

Main session: 8.45am – 2.45pm

Short session: 8.45am – 1.00pm

Long session: 8.15am – 3.30pm

Call in and see us on the grounds of Tauwhare School, or contact us by phone 8240860, or email pukekopreschool@xtra.co.nz. And don't forget to check out our website www.pukekopreschool.org.nz



Tauwhare Playgroup

We are back in the multipurpose room at Tauwhare School now, which is very exciting. We will be able to play with a wider range of our toys and equipment, and we will spend more time playing outside as the weather warms up.

A big thank you goes to St Andrew's church in Tauwhare, for the use of their buildings during terms 2 and 3. We appreciated having a home in Tauwhare still, whilst the school had building work carried out on the multipurpose room.

In the last week of Term 3, we had a visit from Sam and his Farmyard Friends. Sam is a beautiful pony, and his friends included three young goats and a giant rabbit. They were brought to playgroup by their owner, Marion Rogerson. The children spent ages with the animals, and were patient and gentle with them. It was a fantastic experience for the children and their parents and carers. We are so lucky to be able to provide opportunities like this for the children.



If you'd like to book Sam for your children's party, please search for 'Sam and his Farmyard Friends' on Facebook for details.

About Tauwhare Playgroup:

Tauwhare playgroup is a friendly and fun group, where parents, grandparents, caregivers, children and babies meet together in a relaxed environment. Our playgroup is free to attend, and our activities include:

- Music and singing
- Imaginative play
- Outdoor and free play
- Art and craft activities
- Trips to interesting places.

We meet at the Multipurpose Room at Tauwhare School from 9am-12 noon every Thursday during school term time. Please bring along a small plate of food for the children's shared morning tea, and we provide hot drinks for parents and caregivers.

For more information, contact: Pippa on 07 824 0846

Like us on Facebook and keep up-to-date with what is happening.

About Playgroups:

No child is too young for playgroup. All children from 0-5 years, including babies, love new experiences and benefit from developing sensory, social and communication skills through activities at playgroup. Children like playgroup because they can:

- Participate in new experiences
- Develop and increase their social skills
- Learn sharing, co-operation and simple routines
- Interact with other adults and children in a safe environment
- Enjoy learning more about their world.

Adults also benefit from playgroup - a time to talk, make friends and share experiences, while children learn through their play experiences. Adults like playgroup because they can:

- Meet other local families and develop new friendships
- Relax and talk in a friendly environment
- Share experiences and ideas
- Play with children and nurture a spirit of co-operation.

TAUWHARE INDOOR BOWLING CLUB

The 2015 bowling season is now complete.

Thank you to Jim Bargh and Kevin Williams for putting on the President's and Vice President's night.

To John Cottle, our Patron, and Sandra thank you for your evening.

Our AGM was a formality. No changes of office holders for 2016.

The Prizgiving saw Heather Bargh take the Points Cup for 2015. John Bargh was awarded the cup for the Most Improved Player.

The Club Triples (an Eastern competition) held on 19th September 2015 resulted in a win for Matangi; Tauwhare were runners up.

Results:

17 September 2015 – President's and Vice President's Night

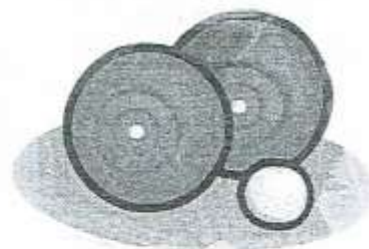
- Winners B Meads, R Arnold
- Runners Up R Coxon, L Verner

24 September 2015 – Patron's Night

- Winners B Meads, Glenda Goodare
- Runners Up J Arnold, D Pizzini

8 October 2015 – Christmas Tournament (Rinks)

- Winners S Gay's team (Ngaruawahia)
- Runners Up S Mill's team (Matangi)
- Top Tauwhare Team – J Arnold, M Bargh, N Stolwyk, Gl. Goodare



Since last month's report on the Moore Cup – we do now have a final result. Eastern and Morrinsville recorded three wins each. Initially Morrinsville were declared the winner on a count-back of points. However a 'smart cookie' thought it might be a good idea to have a look at the rules. Yes, and would you believe it, *"in the event of two teams recording the same number of wins there is to be a playoff in a neutral hall. The same number of handicap points still apply"*. The match was played at the Centre Hall on Sunday 18 October and Eastern won. Well done! That completes a great season for Eastern having taken the Grupen Cup, Trophy for the North Western match as well as the Waikato Ten's Tournament.

Robin Bargh Phone 824 1819

Share Your Favourite Recipe With Us

Do you have a favourite recipe – maybe it is one that you created or maybe it is one that has been handed down the family. If so we would love you to share it with us and we can include it in one a future edition of the Eureka Express. Send them to editor@eurekaexpress.co.nz



Greetings from Newstead Model Country School

The Big Build

Our school has been patiently watching the changes taking place with the refurbishment of Kiwi and Ruru classrooms and the laying down of new carpet and vinyl in Tiwaiwaka, Kakapo and Kereru. It is almost completed, and we are looking forward to modern new spaces to work in. The children and staff have been so adaptable and co-operative through this process.

Family Portraits – Saturday 7th November

We have arranged with Icon Photography to take either a 10x13 inch family or child/ren portrait for only a \$15 sitting fee. This is a great value and our school will receive the full \$15 sitting fee plus \$10 of any additional photos purchased. These photos will be taken at school in the Eureka room. More information and a return slip will be sent home in the 1st week of next term. In the meantime, save the date and spread the word to friends and family.

The Fabulous Newstead Choir

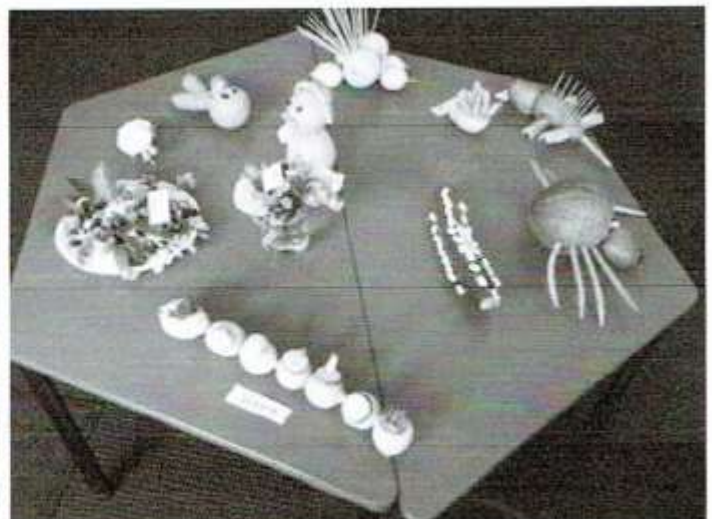
Congratulations to the Newstead choir for winning The Best Contributing Primary School Choir in the Kids Sing Music Event. Thanks to Mike Orum for lending us a keyboard and Corinne Shuitemaker for piano accompaniment and general music support. Just another example of Newstead parents supporting our kids. A huge thanks to the parents who provided transport and those who had to organise uniforms. The students did a great job and got to experience something new. The hard work paid off. Take a look at the clip of them in action (and many other exciting learning events) on our Newstead Model Country School Facebook page

Flower Show

We had a very successful Flower show with every child participating and trying their best to create fabulous entries to share with the school. Each year the children become more and more creative! The children loved participating in the day and they got a lot out of it. A huge thanks to the parents and caregivers who gave up their time to help.

Agricultural Day

On Saturday we held another very successful Ag day with over 70 animals being put their paces and being judges. The children and their families are to be congratulated for the time and effort put into caring for and training their animals. Ribbons and cups were won and a great community day was celebrated by all.



LADIES A PLATE

HEALTHY APRICOT LOAF

I have been making this loaf for the last 20 years. I found it in newspaper when I was living in Palmerston North. It has no eggs and butter and is very healthy but so tasty. It is also very nice toasted for breakfast- if it lasts that long!!!!

- ¾ cup coconut
- 1 cup All Bran
- ½ cup pumpkin seeds (pepitas) or sunflower seeds
- ¾ cup rolled oats
- ¾ cup raw sugar
- 1 cup dried apricots, chopped
- 1 ½ cups self - raising flour
- 1 ½ cups milk

Preheat oven to 170°C or 150°C fan-forced. Spray and line a loaf pan with baking paper. Combine all ingredients in a large bowl and mix well. Spread mixture evenly into prepared pan. Bake for 50-60 minutes. Stand in tin for 5 minutes. Turn onto a wire rack to cool. Slice and spread with butter.



JUDITHS' BOILED FRUIT LOAF

INGREDIENTS

- 450g sultanas or mixed fruit
- 2 cups water
- 1 ½ cups of sugar
- Pinch of salt
- 60 grams butter
- 3 cups flour
- 1 teaspoon bicarbonate of soda
- 1 teaspoon ground cloves
- 1 teaspoon mixed spice

METHOD

Pre-heat oven to 180°C/160°C fan-forced. Line a loaf pan with baking paper. In a large saucepan boil sultanas, sugar, salt, water and butter for 5 minutes. Remove from element and leave to cool. Then add sifted flour, bicarbonate of soda and spices and mix until well combined. Bake for 45 minutes or until skewer comes out clean. Cool on a rack.





Farming Mums NZ & friends are
invited to a FREE.....

'MAKE' Workshop

(normally \$25.00/person/workshop)

Where you can learn how to MAKE
your own more natural
Household Cleaning & some Cosmetic products.

I will show you how, Quick, Easy & Inexpensive it is to make your own
MAKE products including:

- * Laundry Powder * Dishwasher Powder * Flowing Soap/Shower Gel
- * Deodorant * Toothpaste * Carpet Cleaner/Pet Smell Neutraliser
- * Lip Balm * Moisturiser/Night Cream & more.

Thursday 26th November 11am—12.30pm
at the Eureka Hall, Hunter Road, Hamilton.

You must register to receive a free copy of the recipe sheet which includes
all recipes from the workshop. (NB There will be a small shop available for cash sales only)

MAKE Products;

So Easy to MAKE. Most recipes have only 3-4 ingredients, Save you Money,
Reduce the number of chemicals in your home, Can be better for sensitive
skin (no parabens or SLS's), Environmentally friendly & reduce recycling,
Know what ingredients are in the products you are using!

Register at F/B—Farming Mums NZ 'Event' or Di Millow ~ makeityourself2@gmail.com

www.thedairyfarmersdaughter.co.nz

MAKE – Making A Kinder Environment through the use of more natural products...
better for your home, family, budget & this beautiful planet we all share.

Take a walk in the park and support Save the Children

Artists and musicians will be coming together in early November, in the stunning setting of the Waitakaruru Arboretum and Sculpture Park, to support Save the Children. **Artists in the Park** will take place at **The Sculpture Park**, 207 Scotsman Valley Road, east of Hamilton, between 10 am and 5 pm on the weekend of **November 7th and 8th**.



There will be painters, including Colin Gibbs and Faith Thomas, together with tapestry, glass and metal sculptors, with stalls exhibiting work by Marilyn Rea-Menzies, David Traub, Nathan Hull and others. Many artists will be working on site as well as offering completed art work for sale. Musicians will be performing at different venues throughout the Park over the weekend, including World Voices, an *a cappella* group from the University of Waikato, local singer/songwriter Coral Pitcher and other local groups.

On Sunday afternoon there will be a **Mad Hatter's parade** featuring school children from Tamahere and Rhodes Street schools displaying the hats they have created, inspired by some of the 120 countries where Save the Children works.



The Sculpture Park contains more than 50 sculptures in 17 ha of gardens with over 18,000 trees and plants from around the world that have transformed this previous quarry. A walk in the park can take you from New Zealand to Asia, South and North America, Europe and Australia, including views to Pirongia and Karioi.

Home-made cakes, sandwiches and hot and cold drinks will also be on sale throughout the weekend, to sustain you as you explore the gardens and meet the artists.

All proceeds from the event will support Save the Children projects within New Zealand. This will include their work with Red Cross and the resettlement of Syrian refugees; organising school supplies for children when they start arriving in New Zealand early next year.

Tickets are \$15 for adults or \$5 for children. They can be purchased in advance from the Save the Children shops in Hamilton East or Thames, or at the gate on the day.

IN YOUR GARDEN

Generally frosts have retreated making it safe to plant out tender vegetable seedlings and subtropical fruits. Spring growth will shortly be in full swing and in many areas well advanced, which means feeding is most important. Keeping weeds at bay and watching for insect pests is also important in early spring to prevent a catastrophe later on. Sow main season summer vegetables including tomatoes, melons, cucumbers, peppers, eggplant, and sweetcorn. In a sheltered corner, plant runner and dwarf beans, pumpkin, and zucchini. Plant successive batches of mesclun or summer lettuce every three weeks to maintain a regular supply of fresh salad greens.



Be prepared for damaging equinoctial winds by ensuring plants are well staked and seedlings well protected. Broad bean harvest begins. Pick young pods to slice like beans or leave for inner beans to mature. Snip mesclun lettuce mix and cut and come again regularly to promote fresh growth. Continue to harvest winter broccoli, cabbages and cauliflowers.



Fabulous flowers, plant now a mix of annual bulbs and perennials to fill your garden and vases with fragrance and colour year round. Suggestions are, hellebores, petunias, queen annes lace, gladioli, hydranges, love in the mist, sweet peas, poppies, dahlias, nicotiana, cosmos, roses, lupins, tulips, polly daises, sunflowers, nasturtiums, carnations and delphiniums to name a few.

It's time to plant waterlily bulbs, plant them in a mixture of compost and grit in an old plastic pot or purpose made basket. Place in the pond to a suitable depth in still water, you may have to put a brick underneath.

Groom lawns, scatter fertilizer and weed. October is the best time to sow new lawn seed.

Make room for plants that are coming back to life after the winter chills. Protect plants such as Hostas with snail bait. A good tip is to place the bait in a screw bottle top and cover with a paua shell, or similar to keep the bait dry.

Tidy camellias, clear away blooms to combat disease, you may notice some late flowering camellias with brownish blooms – is it rain damage or has petal blight struck? Either way clean up the flowers and trim the bush.



Plant another batch of potatoes now, and keep mounding up previously planted ones.

Be safe. It's not just sunscreen you'll need from now on. Check your garden for hidden hazards. Cover sharp stakes with small pots to avoid eye injuries. Wear long gloves to protect arms from scratches or rashes. Clear pathways – you can't always see what's in front of you when you're carrying a bag of weeds.

Happy gardening, Jennifer

Memories of UK and Europe

Home again after a wonderful trip to the Northern Hemisphere. We spent nine weeks re-exploring the UK while visiting my English family, traversing the narrow water ways of Worcestershire on a narrowboat (more details in a future *Express*), experiencing our first organised coach tour travelling through Central Europe (the former eastern bloc) and using the very fast and efficient European rail system to visit other European cities. Memories of heat in Europe (35 - 40 degrees most days), looming drought conditions, tourists risking life and limb for yet more selfies, "green" Europe evidenced by fields of solar panels and wind power generators, the spectacular scenery of the Tyrol and Swiss Alps seen on our train journey and the wonderful architecture of the former empires of Europe.

These are 'snapshots' of the places we visited and the stories we heard -

- **Singapore** - revisiting this vibrant city with new sights to see - Marina Bay Sands Hotel with views of the city from the 57th floor of one of three towers, Garden By the Bay and the grove of Supertrees (25m - 50m vertical gardens that come alive at night with a light and music show) and laser displays on the marina. We were also treated to fly pasts of the modern Singapore air force practicing for their 50th anniversary celebrations taking place in early August.
- **Belfast - Northern Ireland** - warm hospitality from an Irish family (Alan a Marvin Farms worker on our farm in the 80s) the forbidding granite of the Mourne Mountains, the winding lanes of Counties Down and Antrim, the beautiful coast (so like NZ), the Bushmills whiskey distillery, dairy farms (so different from NZ but also affected by the GDT auction system) and the Titanic Museum in Belfast.
- **London**
 - The Churchill War Rooms under Whitehall (an underground warren, formerly government store rooms, converted to the command centre for the WW2 home and overseas theatres of war). One can read and hear the history of those who served in this subterranean world for 7 years. After VJ Day the occupants apparently got up from their desks, turned off the lights, leaving papers and maps in place, and left. It was opened up to the public during the Thatcher era and also houses the Churchill museum. Not a conducted tour so you can wander at will and to do the visit justice you need to put aside at least 2-3 hours to visit.
 - Witnessing 1000s of members of the Salvation Army from all over the world marching down The Mall during their 150th anniversary celebrations.
 - The transformation of the Docklands into apartments, restaurants etc (very different from when I sailed in to Tilbury Docks in London in 1968).
 - The strange shaped office buildings that Londoners give nick names to suit the shape of the building - the Shard, the Gherkin, The Walkie Talkie, The Cheese Grater
- **Bath** - the spectacular Roman baths, Sally Lunn buns, roman ruins and a confusing one way street system.
- **Somerset** - The beautiful coast and beaches of Devon and Cornwall and children playing on the beach at Lyme Regis in swim suits with hardly a UV protection sunsuit to be seen - no slip, slap, slop and wrap in the UK.
- **St Albans** - another beautiful Roman city - house prices £500+ (recently in the headlines as parts of the city were disappearing into sink holes - my cousin tells me older residents remember being told as children not to play around a huge boggy area as they may never return!! Apparently there was a brick factory in the area and a lot of clay was taken out of the area and back filled with rubbish which may be the cause of the current subsidence problems).
- **Paris** - a revisit and this time a visit to the Louvre (we didn't have enough time to visit all the galleries even though it stays open until 10pm). Very different from my visit in the 60s when visitors could roam through the galleries at no cost. Still a wonderful museum of art and culture but the tiny *Mona Lisa* still disappoints; however visitors still stand 10 deep to take photos of her portrait.

Central Europe - A 15 day 'leisurely' coach trip (two days in each city) - but leisurely a bit of misnomer - we walked for many kms each day exploring the cities and surrounds with a local guide. However after a month in the UK walking everywhere we were fit enough to keep up with the pace. Our trip - Frankfurt, Berlin, Warsaw, Krakow (via Berkanau-Auschwitz), through Slovakia to Budapest, Vienna, Prague and back to Frankfurt.

A mishmash of memories - no borders so free passage between countries (the Schengen agreement) - however systematic identity controls are still in place. (Since we left Europe the refugee crisis has accelerated so I assume free travel is again on hold); bleak soviet apartments in every country (no insulation, paper thin walls, average size 36m²) now being renovated for modern living; cake, chocolate & pancakes (too tempting); goulash soup (yum), armed police and soldiers in railway stations and near important monuments, wonderful flavoured Polish vodkas; the pragmatism of the peoples controlled by the Soviets for many decades and their stories of survival; the stunning, gilded churches in these predominantly Catholic countries (also statues of Pope (Saint) John Paul II at every turn). The rebuilt 'old' cities, many carpet bombed during WW2 (and in NZ we are arguing about rebuilding one cathedral!). Confusing currencies (no Euros in most of central Europe); the realisation of the impact WW1 had on Europe when the centuries old dynastic families either abdicated or were exiled when Central Europe was 'carved up' after WW1 and former empires were relegated

to history. The enormity of the influence of women rulers like Elisabeth (Sisi) Empress of Austria and Queen of Hungary; Maria Theresa Empress of the Holy Roman Empire and the House of Habsburg and her youngest daughter Marie Antoinette Queen of France, and their connections to the monarchies surviving today; the stunning palaces that have remained largely unscathed through many wars – often due to their location outside the city walls.

- **Frankfurt** – often called Manhattan on the Main [river – pronounced Mine] for its impressive modern skyscrapers. Few of the historical buildings remain – just some of the buildings of the old Gothic city Romerberg rebuilt brick by brick in the 11 years after WW2, some of the buildings in a simplified form; the City Hall (Rathaus); the largest railway station in Europe a stop for most ICE high speed train lines. A shop full of teddy bears (I resisted the temptation to bring some home); the Eiserner Steg bridge – a pedestrian bridge with thousands of coloured padlocks attached to the sides – (locks of love).
- **Berlin** – a must visit for those with an interest in WW2 history (and readers of spy novels like me) and sobering reminders at every turn of the Nazi era. We stayed in the former eastern sector. Too much to see in two days but a visit up the Post Office tower gave us a bird's eye view of the city. The reality that the Berlin "wall" actually wound its way through Berlin following the town boundaries and included a mixture of wall, wire, buildings and the river to create the barrier, not just the "wall" we see in history books.
- **Poland** – Still struggling after 40 years of communism – average monthly wage €300-400. 95% of Poles still acknowledge their Catholicism. 9m plus Poles died in WW2.
 - **Warsaw** – 80% of this 'old gothic city destroyed in WW2 but faithfully rebuilt using memories and photos to recreate the old city. Also birth place of Karol Jozef Wojtyla who left Poland with one suitcase in 1978 for the long tortuous trip to the Vatican via the east, who was not permitted to return by the Soviets but returned on an official visit as Pope John Paul II in 1979. And yes the composer Chopin was Polish – very important to the Polish people to get this correct.
 - **Auschwitz Concentration camps** – preserved more or less as museums to remind visitors of the human suffering of the holocaust but hard to reconcile what the eyes see with the horrors that were inflicted on over 1.5m Jews, gypsies, the disabled and others in just these 2 camps. The photos of prisoners lining the corridors were heartbreaking – young and old alike and most died within 2 months of entering the camp. There are two camps -
 - Auschwitz I (a Polish military barracks before the Nazis took over the camp and surrounding village of Oswiecim) with its infamous metal banner "work sets you free" across the gate. When entering the camp it is hard to reconcile today's pristine rows of warm red brick buildings and tree lined streets with the horrors and cruelty of the death camps but then you see the electric wire fences, guard towers and the evidence of the inhumanity of the camp.
 - Auschwitz II – Birkenau 3 km away from the main camp - this purpose built death camp was built to ease congestion in the main camp - an endless bleak landscape with row upon row of barracks, sited for its existing rail network linking many European cities, with the train tracks built straight down the middle of the site with the 'sorting' platforms to the side.

I was apprehensive prior to our visit but and experienced feelings of great sadness but the story of those who died needs to be told and the memorials and museums allow this to happen.

- **Krakow** – artisan villages, medieval cathedrals, wonderful food, the Polka and the Wieliczka Salt Mine (closed in 1996 but opened to visitors – guided by former miners and trained guides). Salt mines have very clean air so miners didn't suffer from the usual respiratory diseases that afflict miners – in fact during the industrial revolution people were treated for respiratory illnesses in the mine. Unusually no children were ever sent down the mines to work. Visitors go down 135m (lowest mine 1000m) via the former miners lift and long flights of stairs with a guide and see how the mine was worked through the 750 years of its operation. You also visit one of the 40 plus chapels in the mine – the largest chapel has statues, frescos and altars carved from the salt by hand over 60 years by a succession of miners – this chapel can hold up to 400 worshippers and is still used regularly for church services.
- **Then through Slovakia** (formerly part of Czechoslovakia the country gained independence in 1960 before later joining the EU) **to Hungary**. Hungarian is one of the most difficult languages to learn and unlike other European cities the written word does not in any way resemble words recognisable to us. However many Hungarians speak some English because to be awarded their university diploma students must learn the basics of two languages (Russian compulsory in the Soviet era) and most now study English.
 - **Buda** on the west (the hilly castle quarter) of the river Danube where the President resides at the Sandor Palace, and **Pest** on the other side, a flat and sandy plain, were united into a single city, **Budapest**, in 1873. All the city bridges were destroyed by the Germans but mostly rebuilt to the original designs. The stone lions that decorate the Chain Bridge survived. There are strong rules around planning and construction in Budapest to preserve the historic cityscape and its World Heritage Site status. Visits to Matthias Church (Gothic), the Hungarian Parliament built in the style of London's Westminster, the Szechenyi Thermal Baths, outdoor and indoor pools and one of the largest bathing complexes in Europe with the steam rising from the grounds reminding us of Rotorua and a river cruise to see the beautiful city lit up at night.

Then on to Austria More next month – Jill McGuire

Farm Discussion Group Report

Hi all, this month we visited the Gordon property on Waverly Road, the original home farm.

During the whip around, it was found that pasture covers are on the improve, out stripping demand and creating in most cases a surplus. Where feed supply was out stripping demand, supplements were not being put in. The van Vugt property is still putting in supplement but at 4 cows/ha, supply does not equal demand but will be within the next 10 days. Josh had dropped out 20% of his farm for Chicory creating a short term deficit which he was filling with 2kg PKE/cow. Growth rates are 50-75kgDM/ha/day over the last 2 weeks.



Most farms at the same time last year had made or had a greater amount of silage dropped out and were further along in their cropping programme. This was because of 2 main factors; grass growth is not quite there yet through lower soil temperatures. Also the reduced feed inputs this year has kept pasture demand higher and average pasture covers lower for longer. Soils have been wetter also which has delayed the ability to get cultivation started. Rotation length is in the mid-20s compared to the traditional 18-21 days. The trick to successful pasture management is keeping to the 2.5 leaf stage for optimum growth and quality. The next concern is the wind drying out the soil through evapotranspiration which, with the longer than normal rotation length, will help buffer feed supply for a few days until the wind drops and the rain arrives.



The cost of silage was covered nicely with a natural surplus costing 15-25c/kgDM and N boosted grass costing an additional 11c/kgDM in the stack. N boosted grass, even though it costs more to make silage, the greater cost would be if we ran short of feed in the short term jeopardising production. The application of N at the moment promotes tillering, delaying the rye grass plant going reproductive. Once reproductive, the pasture quality reduces and roots start dying off therefore reducing pasture growth. Silage also creates a buffer in the system over the summer months. PKE at the current spot price of \$285 delivered is 31c/kgDM.

Milk production is down in the area by around 10%. This is from lower inputs and more strategic culling. This is expected with the lower forecast payout causing a negative response to inputs against profitability. Some were on par for production due to earlier calving dates but wouldn't be calving any earlier, with most opting for the same mating date as last year.

Mating in the most part seems to be going well with a fair amount of positivity. A topic for discussion was around feeding over mating and the importance of it. The outcome is, feeding once a cow has cycled is irrelevant but the trick is to get 85% of them cycling before mating starts. The keys for achieving 85% cycled before mating starts are:

- 5 Body Condition Score (BCS) in Mixed Age (MA) cows and 5.5 BCS for Rising 2+3s at calving
- Calving date and pattern, 28 days between the end date of calving and planned start of mating
- Animal Health: metabolically, trace elements and urinary etc
- Heat Detection is paramount at the moment and fatigue will be setting in, Go MORO!

Brendan Arnett from Fonterra talked about volumes of products being traded through the dairy trade auctions being down as it is more profitable to sell through other avenues at the moment. Stock piles of product are marginally higher than normal. In perspective we can only store a week's supply of product and currently at 1/3 capacity with peak productivity still to come.

Banks (ANZ, ASB, Westpac) are saying interest rates have been easing slightly but are plateauing for the medium term.

Steve Harkness (0272866095) and his team from Annexa Vets are busy doing repro at the moment and signs are looking ok. Mg + Ca supplementation can start to be phased out.

Brett Pike (0275999301) from James and Sons said PKE prices have increased by \$70/t over the last month and prices are expected to ease over the coming month but are unlikely to go below @220/t again. Prices traditionally bottom out around Labour weekend, weather dependant.

DairyNZ has reports that maize grown under contract or grown for sale is down markedly due to lower demand from dairy farmers. On farm grown maize is later or down.

Thanks to Jaimee form DairyNZ for running a great group and RD1 for the BBQ. Our next group is at Brent Johnston's place on the corner of Woodland and Valentine Roads, Tuesday 10th Nov at 11am. If you have any topics you would like to cover please do not hesitate to contact Brett Gordon (0274484722) the convenor, or myself.

The Fish are about to bite, see you at around 50m off Raglan.

Dan Hinton
0274267509



You are invited...

AVON
XMAS OPEN HOUSE
Friday November 20th
10am-2pm
4pm-8pm

- View and order display items from the XMAS catalogues
- Gift sets and Special Open House Deals ready for you to buy
- Drinks and Nibbles
- BRING A FRIEND!

Please R.S.V.P. by November 18th to
Ros Chambers
120 Friedlander Road, Eureka
ros_dave@xtra.co.nz or
07 824 1611/ 0276888022

Vaccinating Calves

Much to everyone's surprise, researchers have discovered calves on dairy farms, where herds being vaccinated against lepto, were getting lepto! This was happening before Christmas. For this reason we are now recommending that calves are vaccinated against lepto **before Christmas**. They should already be getting vaccinated against clostridial diseases (eg blackleg and tetanus). When we use Ultravac 7 in 1 we will be protecting them from both lepto and the clostridial disease. This is a 7 in 1 vaccine. We recommend **two** vaccinations **before** Christmas.

Dislocated Hips—can be successfully repaired!

It is that time of year again when cows are bulling and riding each other. Sometimes they slip and fall and their hip joint comes out of its socket. It is possible to sometimes put them back into place. If we can get to them within 24 hours of doing it and the cow is still walking around, it may be possible to fix it. In one case last year, Jan Bert and Patricia cut the leg open over the hip joint, placed the joint back into the socket and then stitched it back up. This cow recovered nicely and is still in the herd (last we heard).

Scouring Yearlings - may not be worms!

We have been seeing a few scouring yearlings lately which have tested positive for **Coccidiosis**. If your yearlings are scouring, it would be a good idea to bring in some faecal samples from the worst affected so we can test them for both worms and Coccidia—it is not an expensive test and you will have results within 24 hours. Coccidia is not a bacteria or a worm, but a protozoa which invades the lining of the large intestine where they do their damage. The most effective treatment is drenching with a product called **Baycox**.

No Bull—Make Sure Your Bulls Are Protected

Check that your bulls have been tested for **BVD** and vaccinated twice, 4 weeks apart. Make sure the last vaccination is given at least 10 days before they join the herd.

Problems can occur if you use an unvaccinated bull which is naïve to BVD and he mates a cow carrying the BVD virus. He may be mildly ill for a day or two (you may not even notice) but more critically he will be **infertile for a month or 2 and that would be a disaster!!**

NEWS FROM YOUR WAIKATO DISTRICT COUNCILLOR

Our **District Plan Review** began in 2014 and review workshops were held in June and July this year with 18 'pit stops' across the District – thank you to those who gave us your feedback which mainly focussed on rural land use and subdivision, environmental protection, heritage protection, iwi, urban development and rezoning. We will now review all the information gathered and will then move to Stage 1 Phase 4, the Draft District Plan development. Then move into Stage 2, the notifications and hearings, in 2017, appeals in 2018 and finally operative in 2020.

Each year we produce an **Annual Report** – the 2014-15 report was adopted on 12 October. This can be read online or hard copies are available to be viewed at our council offices. There is also an eight page summary (I can post or email you a copy if you are interested). Interesting facts in the report include – Waikato District spans 400,000 hectares of land and is home to 63,381 people. In the last 12 months we have resurfaced 148km of road, completed \$400,000 of new footpaths, started a new animal contact education programme, and donated \$361,846 to organisations and charities throughout the district. We operate 31 water reservoirs, 10 water treatment plants; also provide 50 playgrounds, 40 sports parks, 12,673,590 litres of drinking water per day and collect 10,300 tonnes of rubbish per year; have 1,816km of sealed roads, 606km of unsealed roads, 200km of footpaths and 34 community halls.

HRH Prince Charles and the Duchess of Cornwall are visiting the Waikato in early November. They are scheduled to visit Turangawaewae Marae on Sunday 8th November. After a private audience with King Tuheitia and his consort the Royal couple will walk down to the barge where the Waka Taua fleet will do a pass and salute. They will then attend an afternoon tea for invited guests before leaving the Marae.

The Council has recognised the need to preserve the written, photographic and oral history of the district. A staff member has been allocated to each of the eight **Heritage Committees** in the district to facilitate the gathering of history and its storage. Through the Long Term Plan \$40,000 per annum for the next 10 years has been allocated for heritage which will be reviewed 3 yearly. The local committees can access this funding for heritage projects.

The Tamahere / Eureka Wards Heritage Committee meet regularly and are doing an excellent job prioritising the areas of heritage important to their communities. They have purchased a domain name which can have additional domain names connected to the specific pages for each community e.g. Newstead, Eureka, Tauwhare, Gordonton, Puketaha, Tamahere etc and others can be added as the number of groups grow. They will eventually have a system to upload scanned information to the web pages so the many photographs, documents and district and family histories etc currently kept in family and community group archives (and in the back of cupboards and under beds etc!) can be preserved and easily accessed. A Committee member has also identified sources of funding and information of those who can assist with the taking of oral history. If you think there may a present, or former, member of your community who may have an interesting 'story to tell' let me know.

Inorganic Refuse Collection 2015 commences week beginning 1 November and finishes week beginning 22 November. Notices will be delivered in your mail with specific dates. But briefly:

For those households who receive a black bag kerbside collection –

If your rubbish is collected:

- On a Wednesday – put your inorganic refuse on the kerb on Sunday 29 November
- On a Thursday – put out your inorganic refuse on the kerb on Sunday 15 November
- On a Friday – put out your inorganic refuse on the kerb on Sunday 22 November.

We ask that you don't put your refuse out until your specific date. Queries to Metrowaste 0800 130 908

For many years there has been a sign at public schools and many community halls saying "**Civil Defence**". The reality is that the over 100 facilities so marked would not be able to cope with an influx of people in an emergency. We will still have Civil Defence centres but now, in an emergency, residents will receive official information via local radio stations, social media and Council offices. Therefore to avoid confusion the existing Civil Defence signs will gradually be removed.

You can now view all of **Waikato District online** via one public map view. You can search for a property, property and road boundaries, property and rating information, District Plan information, utilities information and aerial photography. It has other features so explore our District through **Maps Online** at www.waikatodistrict.co.nz

We are delivering a new **Dogsmart Education programme** to assist children understand dogs and deliver an important message **if a dog's on its own, leave it alone**. While aimed at primary school children the programme can be tailored to suit any community group. Contact our Animal Control Team on 0800 492 452 for more information.

Expressways

- The 16km Cambridge section of the Expressway is almost complete well ahead of its original 2016 completion date. The project team will soon be in a position to announce a final completion date and those travelling from Eureka will be able to link in to it at the Victoria Road interchange to travel either north or south
- The first sod has been turned on the \$458m, 15.2km **Huntly section** that will connect the Ohinewai section in the north to the Ngaruawahia section at Taupiri. It will involve four million cubic metres of earthworks, including an 80 metre cutting through the Taupiri Range, and has nine bridges including four crossing rivers and streams. Archaeology and heritage assessment and planning are a large and important feature of this section.
- The **Hamilton Section** construction contract should be awarded this month with design and management plans prepared before March 2016. I notice a number of houses in the path of the expressway in Puketaha have been moved so preparation is underway. Full construction is due to commence in late 2016.

Contact me at any time

Rob McGuire - Councillor Eureka Ward

Ph. 824 3696 / fax 824 3645 / Mob 0274 970 966

email rob.mcguire@waikato.govt.nz or robmcguire@extra.co.nz Waikato District Council free phone - 0800 492 452.



NEIGHBOURHOOD SUPPORT NEW ZEALAND

When to call 111

You should call 111 when you need immediate help with a life threatening or time critical emergency. When:

- People are seriously injured or in danger
- There is a serious risk to life or property.
- A crime is being or has just been committed and the offenders are nearby
- There is a major public inconvenience (e.g. a road is blocked by fallen trees)

How to call 111

- Dial 111 on any telephone.
- 111 calls on payphones and mobile phones are free
- If you are using a work phone you may first have to dial a number (e.g. 1) for an outside line (1-111)
- When the Telecom operator asks what service you need, ask for Police.
- When the Police communicator answers, clearly explain the emergency and answer their questions. The information you provide is vital to the type of police response.
- Some emergencies will need more than one service (Fire, Ambulance and Police). Ask for the service which is needed most urgently. All emergency services have links to each other and the initial service called will notify the other services if they are required.

When not to call 111

- Don't call 111 for non-urgent situations.
- It is not an emergency when the situation is not dangerous and an immediate response is not needed, such as when there is no risk to life or property or an offender has left and is unlikely to return. To report such incidents or crimes, you can personally visit or phone your nearest Police Station. Click on the map to locate the nearest police station at <http://www.police.govt.nz/stations>

Remember

There are only so many emergency services resources to go round. By not overburdening the 111 system, you can help the Police provide services as quickly as possible where they are most needed. But, if you are ever genuinely in doubt about whether to call 111, police would prefer that you did.

Callin*555

*555 should be used to report traffic incidents via mobile phone. It is not an emergency number. In the event of a serious crime or traffic emergency, dial 111. See the fact sheet at : <http://www.police.govt.nz/advice/driving-and-road-safety/report-bad-driver>



Local builder
Tauwhare Road resident
Registered Tradesman

Concrete work
 New homes
 Renovations
 Alterations
 Farm Buildings
 Decks
 Fences
 Bathrooms
 Kitchens
 Roofing

30 years building experience

Craig Griffin Builders Limited

Phone Mobile: 0272792682
 Phone/Fax After Hours: 8241607
 email: cgbuilders@ihug.co.nz

Scanlan & Jones

Specialists in:

- ✓ Wood Fire Sales
- ✓ Wood Fire Installation/Repairs
- ✓ Hearth Manufacturers
- ✓ Outdoor Fire Installations
- ✓ Chimney Sweeping
- ✓ Heat Transfer Kits — Sales & Installation
- ✓ Producer Statements

Registered Installers
 Over 20+ Years Experience
 Free Quotes



Contact Justin & Brendon
0274 834 267 (day)

A/Hrs: 07 824 0950

Email: scanlan.jones@xtra.co.nz

Member of New Zealand
 Heating Association



Wilkins Contracting Ltd

Working for the Land, Working for You

Matt Wilkins

021 574 510; 07 824 1877

- Small bale wrapped haylage
- Conventional hay baling
- Liquid fertilising
- Under sowing



Agricultural contracting for lifestyle blocks

www.lifestyleagriculturalcontracting.co.nz

Lawn Mowing And Gardening Services



Maurice Smith

For free no-obligation quote:

Ph: (07) 8241948 Mobile: 0274797282

Email: mfsmith@clear.net.nz

Ride-on mowing specialists.
Give your lawn the perfect finish

SPYVES PANEL SHOP

for all
 Panel and paint requirements



**AUTOROBOT CHASSIS
 and
 ALIGNMENT MACHINE**

Ph Ron or Karen 8241 890

Fax 8241 892

Mob 027 280 0346

HAIRFIELDS

HAIR DESIGN

95 HOOPER ROAD

Sharon Laurent

Full salon facility in Eureka
 Total hair care professional
 with many years experience
 Agent for Nutrimetics also



Open Tuesday to Thursday
 Late nights Tues/Thurs
 Tel. 824 1712 or 027 280 5978

ROSS PUMPS

&

Filtration Specialists Ltd



Servicing and installation
 On all types of pumps
 Full Water Treatment
 Service Available

DAREN ROSS

Tel. 8241 726 or 0274 346 571

Fax. 8241 879

Email: rosspumps@xtra.co.nz



Hair With Ease

YOUR MOBILE SALON

Women's Cuts
 Colours/Foils
 Kid's Cuts
 Men's Cuts
 Eyelash Tinting
 Eyebrow Tinting

Call Nicola For Appointments

PH: 0275580583

EMAIL: NICOLA@HAIRWITHEASE.CO.NZ

Wayne Brown Painting



**Trademan: Painting & Application of
 Specialised Sprayed Coatings
 LBP External Plastering**

Wayne Brown

389 Scotsman Valley Road
 Tauwhare
 RD1, Morrinsville 3371

Mobile: 027 3197 497

After Hours: (07) 8240806

Email: wayne_paula@xtra.co.nz



TAUWHARE HOME KILLS

TREVOR & LEONIE BRUNTON

1126 TAUWHARE ROAD

PH: 07 824 0880

Fx: 07 824 0809

CALF COVERS

"Canvas, Jute, or satin lined for Calf Club"

I also manufacture horse covers, trailer covers or any other kind of cover you may want. Good quality, P.V.C. horse gear bags — can also be used for dive bags. Good quality at reasonable prices.

**Phone Narelle Pollock
824 0736**



EUREKA POULTRY FARM

13 Hooper Road
Ph 824 1762

**NIC & MARIA STOLWYK
Hobby Hens**



Young pullets from
5 weeks to point-of-lay
Great for lifestylers
Bagged up chook manure
Hours Mon-Sat 8-6

COMPUTERISED BULK SPREADERS LTD

Cartage & Spreading



FERTILIZER, LIME, UREA SPECIALISTS

Competitive Rates

PETER JONES

027 496 3370 07 887 4000

26 years service in the
Morrinsville district

THE BEAUTY HOUSE

Beauty Clinic & Gorgeous Giftwares

For all your Beauty needs plus a
fantastic range of quality Giftware
(EFT-POS available)

dermatech



Jacqueline Jones
Beautician (RCompN)
1092b Tauwhare Road
Tauwhare Village

P: 07 8240950 M: 0274 853985

E: thebeautyhouse@xtra.co.nz



TRADELIN DECORATORS

Greg Godden 021 1584430
goddens@outlook.co.nz
RD7, Eureka Road

- * Ceiling repaints to wooden joinery & Walls
- * New homes, additions & alterations
- * Interior & exterior painting
- * Small commercials & offices
- * Airless spray painting, brush & roller
- * Waterblasting of substrates

For all your painting needs

*We specialist in quality,
it's not hard*

nzgarden sheds

the best little Sheds around!

Your local garden shed supplier of
NZ made, self assemble Garden Sheds
(Zincalume or Colour Steel)

GET IN TOUCH...

- * EASY ASSEMBLY
- * MADE TO LAST!

Waikato Shed Company

218 Hunter Road, Eureka,
Hamilton

Phone: 07 824 1045

Email: sales@nzcgardensheds.co.nz

ENQUIRE FOR A BROCHURE NOW

BMW Parts & Repairs



Mosen Euro Parts

10 Wickham Street
Hamilton

Kerry Meehan

Ph: 846 2972 / 824 1148

M: 021 165 4038

Email: moseneuro@wave.co.nz

Web: www.moseneuroparts.co.nz

FRESH APPLES & PEARS STONEFRUIT IN SEASON



NEWSTEAD ORCHARD
552 Morrinsville Road

OPEN MON-SAT.
W J McMiken & Co
Morrinsville Road
Tel. 856 4478



Café: Restaurant: Brewery:
Wedding Venue:
Private Functions
130 Woodside Road
Matangi

Hours

Wednesday – Sunday
10.00am till 3.30pm

Open for Dinner

3rd Thursday of the month from 5.30pm
Bookings essential

P: 07 8295826
E: info@woodsideestate.co.nz

Hire The Eureka Hall



**For Details
Contact
Gail Mayall
07 824 1758**

Do Business Locally and Keep Locals in Business



Eureka Storage

Many options from 9m2 - 307m2
Short term + long term
Call me to discuss your requirements



Cuneo Piedmontese

HEART • HEALTHY • BEEF

Pedigree + Commercial
Purebreds For Sale
Bulls, cows + yearlings

Don Knight 0274950535

117 Hooper Road, Eureka

**BELLES
&
BRIDES**
MAKEUP | HAIR | BEAUTY

Belles & Brides is the Waikato's premiere on-location beauty service

We specialise in weddings, special occasions and at-home pamper parties
and provide professional beauty services direct to you at your location.

Please check out our website for further
information. The link to our regularly updated
Facebook page can be found on our website –
please become a fan!

www.bellesandbrides.co.nz

Ph: (07) 8241852 or 022 6717588



Image by Nicola Inglis Photography



McFarlane Contracting

Building Partnerships with Farmers

Our Services:

- Maize & Grass Silage
- Full Cultivation
- Cartage - Truck and Tractor
- Hay, High Moisture Hay & Haylage
- Digger

We Offer:

- A Professional Service
- Experienced Drivers
- Quality Machinery

**Maize
Silage
for sale**

*Don't delay...
book your job with us today!*

(07) 824 1186

mcl@mcfarlanecontracting.co.nz

870 State Highway 26, Newstead
RD 6, Hamilton



JBVISSE VETS

For your Livestock & Pets

07889 0414
0800VISSE

For a veterinary practice who truly cares about the well being of your animals, JBVisserVets are the right choice. Our professional and courteous staff are available 24 hours a day to provide leading edge health care and advice to ensure your livestock and family pets are always in their best health.



47 Lorne Street
Morrinsville 3300
Email: jbvisservets@xtra.co.nz
www.jbvisservets.co.nz

Maurice Jackson

phone 027 271 6846

jackson55@xtra.co.nz

Based in Eureka



MAK

CONTRACTING LTD

Agriculture Contract Spraying For Urea & Eczema, Power Harrowing, Air Seeder
Experienced Rural And Lifestyle Block Fencer



CTASTM



Specialists in:

- Professional Internet based systems development
- Web Site Development, Domains and Hosting
- TXT and Email Alerts and Reminders
- TXT Shortcodes for your business or club
- Flight Status by TXting your Flight to 8808
- Live Video and Audio Streaming on the Internet

Phone: 07 824 1025

Email: grant@ctas.co.nz



Go to www.ctas.co.nz for more information



Associate Member of IT Professionals NZ

CCC CompTIA
Network+ Certified



Newstead Veterinary Services

161 Morrinsville Rd (SH26)

Phone (07) 856-4522 Fax (07) 8569487

email: admin@newsteadvets.co.nz

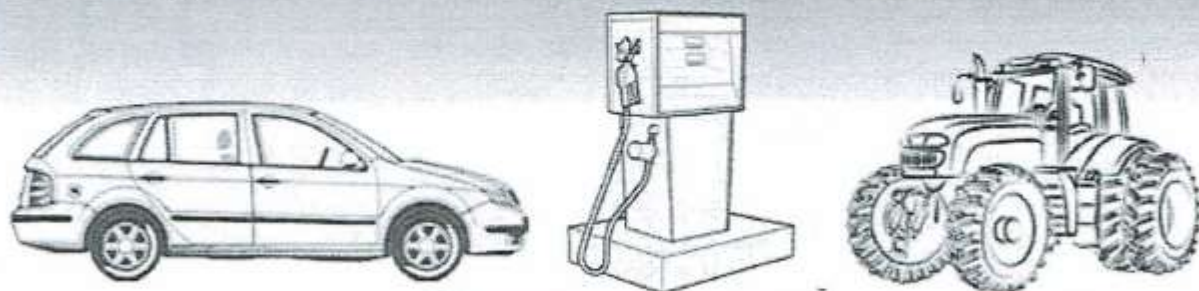
www.newsteadvets.co.nz

We offer a comprehensive range of services for dogs, cats and small pets.

- Puppy pre-school classes
- Comprehensive range of pet care products and pet food
- Nutritional advice with onsite pet dietician and free weight clinic
- Cremation with a local pet crematorium, with optional return of ashes
- Isolation ward
- NZVA Microchipping Accredited Practice
- MAF Accredited vets for pet export certificates to Australia
- Ample parking

We believe that pets are important members of your family.

For your WOF and Service needs...
For your Petrol and Farming needs...



Come see us...

EUREKA MOTORS

1291 Morrinsville Rd, Eureka

07 824 1773

Hours: Mon-Fri 7:30am to 6pm

Sat 8am to 12 noon

GOLDSEAL
Rustproof
Specialists

WALLING CONTRACTING LTD

'YOUR PROVEN LOCAL ONE STOP CONTRACTORS'

WE CAN OFFER YOU THE FOLLOWING SERVICES:



- *Grass Silage
- *Ploughing
- *Rotary Hoeing
- *Ripping
- *Undersowing
- *Baling & Wrapping
- *Digger (12 Ton)
- *Grass Crop Sales

- *Maize Silage
- *Power Harrowing
- *Discing
- *Maize Planting
- *Roller Drilling
- *Power Harrow/Seedbox
- *Shavings & Sawdust
- *Maize Crop Sales



FOR ALL YOUR CONTRACTING NEEDS

PHONE LEN OR BECKY

ON

824 0894 (anytime)