

EUREKA EXPRESS

VOL XXXI No. 7 CIRC 285

AUGUST 2010

Trash & Treasure Eureka Hall, 25th September 2010



- Set up will be on Friday evening
- The doors will open at 7:30 a.m on Saturday
- Tables will cost \$10 – that is all you pay. Any money you make is yours.
- You can sell ANYTHING.
- Bookings for a table are essential and need to be paid for before the sale starts.

BOOKINGS: Gail Mayall - 824 1758 or Gayle Orr - 824 1713

UPCOMING EVENTS

Trash and Treasure Market day

As mentioned in the last edition of the Express, the Express committee are once again organising a trash and treasure day at the hall on Saturday 25th September.

We are currently taking bookings for tables which cost \$10 each. This is all you pay, any money you make selling your items is yours. The committee will not be organizing the morning tea so if there is a group who wants to do some fundraising then this is the perfect opportunity, or if you would like to run a sausage sizzle then let us know.

The committee will advertise the event in the local papers so it will be well advertised. This is a great opportunity to have some fun, meet new people and make a bit of money.

You can sell anything, bric a brac, clothing etc, or any craft products, jams, pickles, preserves, ANYTHING. Please note we have changed the name to trash and treasure as we feel it will draw a mixture of shoppers.



So start collecting your goods.

Bookings for a table are essential, so if you would like to book or find out more you can,

Phone Gail Mayall 8241758

Or Gayle Orr 8241713

HALLOWEEN PARTY

The Express committee have decided not to go ahead with the Halloween party. Only one person volunteered to help, so we feel there is a lack of interest for this event. Thank you to the lady who did offer her help.

GIANT PUMPKIN GROWING

This is your last chance to register your interest in ordering a giant pumpkin plant (or plants) for our summer competition. Do join in the fun.

Seeds are being planted early September to be ready to be bought as seedlings for planting out in late October.

\$10 for growing instructions and plant.

Weight-in date 28th March 2011.

Orders to Wendy Morch 824 1983

Or email Dinah Booth (Dinah@slingshot.co.nz)



Guest Editorial



Gosh how time flies by. It seems just last night when I was asked to write this editorial. How fast the past seven months have gone already and look what's happened so far this year.

January was our time to revive from Christmas and the older you get the longer it seems to take to get over it.

In March Iceland's Eyjafjallajökull Volcano erupted for the first time in almost two hundred years which caused havoc for air travellers world wide. Also in March we won at the Paralympics. Good on you Adam Hall, but sadly he lost his Mum in that tragic car accident.

April wasn't good either as at Easter we had the highest road toll in seventeen years.

In May BP really put the icing on the cake with their oil spill. This would be the biggest and most costly disaster for this year and many years to come.

June was much better with the road toll at Queen's Birthday Weekend the lowest in fifty-four years. Also in June Australia got its first woman Prime Minister after their elected Prime Minister stood down.

In August the company that I work for will be shifting in to a new building and the highlight of this for us ladies, as we are an all female workforce - we finally get to have hot running water.

Goodness knows what will happen in the next few months except we do have two grandchildren turning five and off to school they will be going. Oh how time flies by and at least one thing for sure is - Santa will be here in December.

Alison Yuill



RAINFALL

	July 2010	Year to 31 st July
Total (mm)	61	724
Average (1994-2010)	137	682
Difference	-76	+42



Rainfall recorded on 14 days.

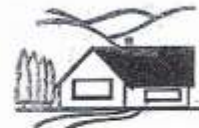
SNIPPETS



WEDDING CONGRATULATIONS TO Mark Saunders, son of Doug and Liz Saunders of Sherwin Place, off Hooper Road, **who wed Kelly Stephens on Saturday 21st August at Welcome Bay, Tauranga.** Mark is an electronic technician with Tag IT Technologies and Kelly is Head of the Art Department at St Pauls. Every best wish to you both for the future.

Condolences are extended to Doug and Liz Saunders and family on the recent death of Doug's mother, Mrs Marjorie Saunders, of Te Awamutu.

MARKET PLACE



WANTED - HOLIDAY HOME WANTED TO RENT

From 4th to 12th March 2011. Four, or preferably five, bedrooms to sleep two couples, one woman and three men. At least two bathrooms also. Attending NZ Clay Target Champs, Holland Road.
E-mail s.cbell@xtra.co.nz or phone 06 838 7733.

WORK WANTED - CHILD MINDER

Do you want Day Care for your children or just want to go out for the night? Whatever the situation. I will even look after your children in your own home. Please contact Daleen - phone 824 1993 or 021 053 9401.



SILAGE FOR SALE

Square 12 bale equivalent. \$100 per bale. Phone Brewer 824 1800.

HOUSE WANTED TO RENT

Two or three bedroomed house, preferably fenced, in Eureka / Tauwhare area. Please phone Linda 829 5225 or 027 345 5830.

FARM ASSISTANT WANTED

2IC, in Eureka, 415 cows. Three bedroomed house provided. Must have experience. Phone email CV to darren.sharyn@xtra.co.nz

BABYSITTER AVAILABLE

Responsible and friendly 15 year old girl.
Please contact Katie Arundel on 8241 746 or mobile 021 0320920.



BROADBAND



With regard to Jake Ngawake's article in the July Eureka Express on Rural Broadband, we also had difficulty in getting broadband so close to Hamilton.

We also petitioned Telecom along with other Eureka residents to get the local exchange upgraded to broadband capability. Once we achieved this mammoth task, we applied to Telecom to have broadband connected only to be told that we were more than 5 kilometres away from the exchange so broadband was not available to us. Our neighbour has broadband but was connected to the Matangi Exchange so we applied to Telecom once again, this time to have our phone line transferred to the Matangi Exchange. We were told that as we already had a phone connection there was little chance of us getting a line from that exchange.

We therefore looked at other options for broadband including satellite but found this to be financially constricting. On searching for other options we came across RuralLink, which runs out of Innovation Park by the University. They were able to give us a wireless broadband connection at relatively high speeds compared to our Telecom dialup connection. We therefore signed up to a broadband connection with them for a cost of "The Everyday Plan, \$95.00 a month and you get 6GB of data and 1mbps download and 340kbps upload". There is a plan for \$70.00 a month with less data and lower speed.

To counteract the high cost of our broadband connection we took up RuralLink's offer of a phone connection as well (VOIP). The cost of this is \$9.95 per month plus tolls. So when you add the two of these together it is not much more than a Telecom phone and internet connection. We now enjoy broadband and phone wirelessly through RuralLink with no copper connections to the outside world.

So as you can see Telecom is not the only rural wireless broadband provider around

Regards the Zeeders Family, Piatt Road.



AGM

AGM

AGM

The Annual General Meeting of the EUREKA HALL COMMITTEE

Will be held Monday 30 August 2010

At 8.00pm at the Eureka Hall.

All welcome.

Secretary



Hello Eureka Express Readers

My name is Camden Wright. I am a scout with the Hillcrest Scout Group and a year nine student at Hillcrest High School. I've been scouting for many years and have really enjoyed the great experiences and opportunities that scouting has to offer. I have already been through Keas and Cubs and was awarded the Lord Baden Powell Badge, the highest award in Cubs. This year the National Scout Jamboree is being held at Mystery Creek at the end of the year. For me this will be a major highlight as a scout. I am looking forward to attending this worthwhile event and interacting with other scouts from around the country and the world.

On Saturday the 11th of September the Hillcrest Scout Group is hosting a show by Te Radar at Hillcrest High School. Please see the flyer below for ticket details. The cost for me to go to Jamboree is \$1,000 and a portion of the tickets sold by me will go towards these costs. Please mention my name when you purchase your tickets. The more people I can get to come to the show the better. If you do not wish to attend the show, but would consider making a donation towards my costs to attend Jamboree, this would be greatly appreciated.

Thanks you and I hope you enjoy the show.

Camden Wright

Phone 07 929 4499, 9 Oak View Place, R D 7, Newstead, Hamilton

Hillcrest Scouts Present:

TE RADAR'S Eating The Dog

Hamilton
11 September 2010

It's the History That History Tried To Forget

ABOUT THE SHOW:

Eating the Dog is a satirical (and educational) look through New Zealand's lesser known history, written and performed by satirist and raconteur Te Radar.

In the show Te Radar celebrates the history that history tried to forget: the bumblers and near-do-wells who personify New Zealand's "She'll be right" spirit.

Date: 11 September 2010
Venue: Hillcrest High School Auditorium
Time: 7:30pm
Tickets: \$25
for bookings email Cynthia:
pfeffer@actrix.co.nz

This show is in support of Hillcrest Scouts - come along and help them get to Jamboree!

For more info: www.radarswebsite.com/hillcrest



Te Radar with Dog (satirist)

Winner:
Best Local Show, NZ
International Comedy
Festival 2009

Winner:
Best Show, NZ
Comedy Guild Awards
2009

A REMINDER ABOUT MAILBOXES

It's not only our posties on RDs 4, 6 and 7 who get discombobulated about the where, how and what of mailboxes.

Members of the Express Committee, who are delivering your favourite green covered mag sometimes find that getting out of the car to reach a mailbox is the only way they can do it, because the box isn't where, how or what the owner signed to do with it when they filled in the form asking the postie to deliver. The rules are clear, and posties may not deliver if you don't keep your side of the bargain.

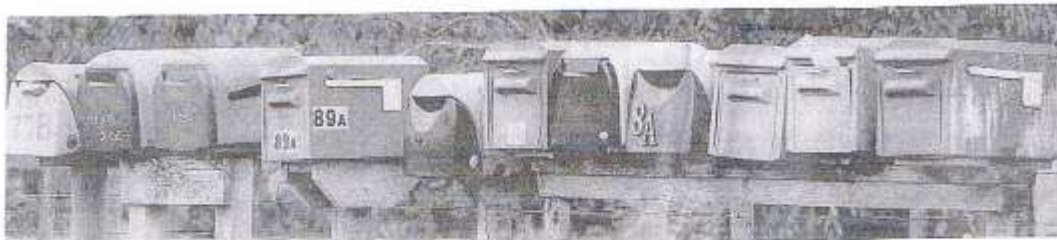
So please make sure of the following:

- The box must be accessible in all weathers. (So no bog hole in front in winter.)
- It must open at the front and measure not less than 400mm deep, 270mm high and 270mm wide, with an aperture (slot) of 250 x 30mm. (Townie boxes won't do.)
- If the box isn't big enough to take parcels, the postie doesn't have to come down to the house if it is more than 500m from the roadside, the postie is permitted to leave a card and require you to collect it from the nominated NZPost outlet.
- The box should, if at all possible, be accessible from the driver's side of a ute. (The passenger seat usually has several boxes of mail on it and posties haven't got extending arms. Also their route doesn't necessarily let them drive both up and down a road.)
- If you choose to put it at the entrance to your driveway, remember that the Council and the Traffic Police consider it an offence for a vehicle to back out onto a highway. So make sure there's room to turn without having to do so.
- And if you're not sure if you would be putting in the right place to start with, just ask the postie first, contact NZPost or you can obtain a pamphlet - Joining and using Rural Post's Services which outlines our requirements concerning box access and minimum sizes.

If you find you aren't getting mail on the day the rubbish trucks call, think about where you are putting your bag and bin. The Council may have told you to put them near the mailbox, BUT if they are right where the postie has to park to fill your box, and she is unable to access your box easily and safely, then you may not receive mail delivery that day. Also if they've been left near the box, and after the trucks have been the recycling guy has left the bin upended right in the way, then you may not get mail that day. Much better to put rubbish and recycling on the other side of your driveway.

Sue E.





RURAL MAIL DELIVERY

Country mailboxes stand
like sentinels beside the road
each reflects its owner
in choice of colour, shape and size.

Some easy to reach
for others a knack is needed
by the road or up a drive
but all at window height of ute.

Unlike townie boxes
their mouths open wide
with pull down doors
for armfuls of mail and other stuff.

Six days a week
the red van slows and stops,
An arm flings out
Once, twice and sometimes thrice.

First the standard letter size
mainly bills and special offers.
Then larger mail
booklets, magazines, stuff to read.

Finally the newspapers
from town and district both.
Urban and country news
up to seven in a week.

On other days it's only junk
bright thick woggles
of car parts, furniture
food, drink and clothing ads.

But that's not all
the rural postie brings.
Parcels, plants, bouquets
heavy boxes, cow drench, tools.

Five hundred mailboxes
along 30 k's of road
each with its own menu
of mail and junk and papers.

In rain and shine
heat and frost
the mail arrives
just as we desire.

But how many of those
along that route
remember that the postie
rose at 3am?

To sort, and load
till every space is stacked
A card written
for all that's in the back.

Then off they go
to solitary drive
three hundred days a year.
We should call them heroes.

Sue Edmonds
5 June 2010

EUREKA EXPRESS

ADVERTISING RATES		CONTACTS - Gail or Gayle	
Classified Advertisements	Free	Gail Mayall (Editor)	Gayle Orr (Treasurer)
Small Business Advertisements	\$10 / month	70 Eureka Road	1139 SH26, Eureka
• x 10 insertions	\$80 / year	Ph 8241 758	R D 6, HAMILTON 3208
One Third Page Advertisement	\$15 / month	Fax 8241 028	Ph 8241 713
• x 10 insertions	\$120 / year	e-mail:	Fax -
One Half Page Advertisement	\$20 / month	gallandbarry@slingshot.co.nz	e-mail: gorr@xtre.co.nz
• x 10 insertions	\$160 / year		

Tauwhare School

REI HAKAUA 2017-2018
 HAKAUA SCHOOLS ASSOCIATION
 2017-2018



We will be hosting 4 representatives from the OECD (Organization for Economic Cooperation and Development) later this week. We were one of only 4 schools chosen in New Zealand for them to visit.

The OECD led party, which consists of 4 people from England, France and America plus representatives from the Ministry in Wellington, are visiting countries around the world to review Evaluation and Assessment Frameworks for Improving School Outcomes. Information will be collated and a Best Evidence Synthesis will then be written and distributed to all member countries. New Zealand regularly rates highly in education and we are proud the Ministry has chosen us as their representative school.

We also received a letter from the Education Minister, Anne Tolley, congratulating us on our excellent ERO review:

"I congratulate you and your board on the quality of your school improvement and self-review processes. In particular I note the comments in the report that a significant number of students are achieving at or above national expectations in literacy and numeracy, and that effective educational direction is provided by an experienced and well-informed principal, ably supported by senior leaders who continue to set high expectations and provide valuable guidance for trustees, staff and students."

It is pleasing to see that an extensive range of self review strategies and reflective practices undertaken by the principal, senior leaders, your trustees, and the teachers, inform the school's ongoing improvement and development. In this, the year that your school celebrates its 125th anniversary, it must be very encouraging for you that the school continues to provide high quality educational opportunities for students."

CROSS COUNTRY

The children have been training hard for their cross country races which are being held on Friday 3rd September. Thank you to the Wilson family for allowing us to use their farm once again.

SKYE

We welcome Skye to our school! Skye (named by the children) is a 3 week old lamb whose mother died recently. We adopted her so she is now the Tauwhare School pet lamb. It seemed a great opportunity for the children who would otherwise never have a chance to feed or care for an animal. I have been taking Skye home each night and in the weekends; she happily travels in my car boot. Her home is the plastic dolls house which is light and easily moved. I would love to have had a camera for the look on Mr. Artis' face when he saw my 'surprise'!

There is never a shortage of children eager to walk or feed Skye – and she loves the attention.

Thank you so much to the Evans family for the donation of a large bag of milk powder. If anyone has a spare brush or dog kennel we could borrow that would be great.



EXCEPTIONAL RESULTS – NZ Champion Women's Singles

Our own Amanda Brown was second seed in the women's singles badminton competition in the weekend and won a

thrilling encounter against top seed Clare Chapple from Auckland. "It's pretty mind-blowing," Amanda said. "It hasn't really sunk in yet." Amanda showed resilience and determination by fighting back from her first set defeat.



INSPIRATIONAL SPEAKER

We were very fortunate to have my niece Sarah Bradley come to our assembly on Monday to talk to the children about "The Magic of Sport".

Sarah is a very talented golfer who won a scholarship to study and train in golf in the United States. Two years ago Sarah was in an intensive care ward following a serious car accident. Now the Cambridge golfer has received an award in the United States after overcoming her injuries and returning to her sport.

She was recently presented with the Kim Moore



Spirit Award at the recent National Golf Coaches Association (NGCA) banquet in the USA. The purpose of the award is to recognise and honour a student-athlete or coach who exemplifies a great spirit toward the game of golf, a positive attitude on and off the golf course, a role model for her team and mental toughness in facing challenges.

Sarah spoke passionately about team work and resilience. She said:

- Never give up
- "Play to your strengths"
- There is nothing in this world that you can't achieve if you give it your best
- Have a winning attitude

Teamwork Makes the Dream WORK

Persuasive Writing from Room1.

Plastic problem

Did you know plastic bags kill over 100,000 marine animals a year just because we drop te plastic bags and take them for granted. People should not take these bags for granted for lots of reasons and here are only a few.

Plastic bags are not biodegradable and they do not rot away or be burned instead they are photodegradable which is when they break into smaller bits with the sun's help, this process takes hundreds of years. The small bits of plastic enter streams and pollute food chains, killing animals. The plastic bags are also difficult to recycle because of contamination from food scraps and other mess inside the bags.

The amount of petroleum used to make a single plastic bag is enough to power a car for 115 metres which is a great waste of petrol.

So are you still keen to use a plastic bag, hopefully NO because they have a great impact on the environment.

By Liam Gilroy, Yr 6

What's the problem with plastic?

Plastic bags are made from petroleum which is a non-renewable resource. So when plastic bags get thrown away it is a waste not only because of the bag itself but also because of the sources they are made out of. New Zealanders use around three million plastic bags a day, that's over a billion bags a year.

World wide it is estimated that about four billion plastic bags end up as litter each year. Tied together the number would circle the world sixty-three times. Driving your car 115 metres is the same as the petroleum used to create one plastic bag. Plastic bags are photodegradable which means it will break down in to tiny pieces with the sun's help. 100,000 marine animals, mostly whales, seals and turtles die each year from becoming tangled or eating plastic bags. So do you still want to use plastic bags?

By Tyla Yr 6

Don't forget to get your teams in for the Quiz night....Saturday 17th September. Ring the office for details.



We are selling daffodils from our front garden to raise money for the Cancer Society.
Gold coin donation per flower.

IN YOUR GARDEN



Spring hasn't quite sprung, but it's pretty close, and what joy to see the Daffodils, Magnolias and Erlicheer making a show. My Awanui cherry trees are nearly ready to burst open, when in flower they look like magic, keep an eye on our driveway as a great shame, the flowers only last about a week.

There's no rest for the keen gardener, so as they say "let's get to it".

Did you know that all Daffodils should be picked so that the bulbs grow larger and produce more blooms next year. Be wary of the white sap that oozes from the daffodil stem as this sticky substance can cause a rash. If animals eat daffodil sap it will induce vomiting and if large quantities are ingested it could be deadly. If you wish to include daffodils in a mixed bouquet, condition them first as their sap is toxic to other flowers. Place the daffodils in a jar containing 3cm of water and add 1/2 tsp sugar, when daffodils have slurped up all the liquid, you can then put them in a fresh vase of water with other mixed flowers.

Top 10 Tasks:

1. Warm sun will encourage Hostas, Delphiniums and Lilly bulbs to sprout, add snail bait or they will disappear again.
2. Prepare beds for planting vegetables. Use a hoe to cut away any weeds off below soil level without bringing more seeds to the surface. Once weeds stop popping up plant seedlings or sow seeds.
3. Plant another batch of shallots and garlic now, you can never have too many, spring onions too.
4. Warm up your soil with a thick layer of mulch. Mulching protects and insulates your soil to ensure plant roots stay warm in winter and cool in summer. Organic mulches such as straw and sawdust also condition the soil as they slowly decompose. They also provide an ideal environment for earthworms and other beneficial organisms.
5. Plant early potatoes once soil starts to warm. Jersey Bennes, Agria and Ilam Hardy are early starters, matures quickly and are good producers.
6. Roses are ready for their big end-of-winter feed. After pruning, fork generous quantities of well rotted compost and animal manure. A good handful of blood and bone for each rose bush and don't waste those banana skins, they nourish your roses with calcium, magnesium, sulphur, phosphates, sodium and silica.
7. Plant Parsley to enhance the fragrance of roses. Parsley is also said to protect against black spot.
8. Plant garlic chives around roses as a natural systemic insecticide. The excretions from their roots are taken up. The scented flowers of chives also repel bugs like aphids.
9. Sow salad greens in seed trays ready for transplanting outdoors when the weather is a little warmer. Don't sow carrots and other long root crops in trays though as they become distorted with transplanting. Sow these direct when the weather and soil warms up a little more.
10. Pay attention. Frosts can still pay surprise visits. Be prepared to cover up tender plants and seedlings on cool nights.

Happy gardening, Jennifer



LADIES BRING A PLATE

This is a lovely Caramel Slice with a difference having the rolled oats in it

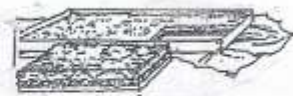
Caramel Oat Slice

1 cup Flour
½ cup coconut
1 ½ cups rolled oats
150 g butter melted

½ cup Self-raising flour
1 cup brown sugar
1 egg

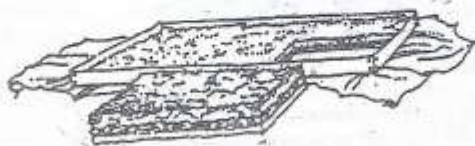
FILLING

100g butter
2 tablespoons golden syrup
1 tin sweetened condensed milk
½ teaspoon vanilla essence



1. Preheat oven to 180C Line a 25cm x35cm slice tin with non stick baking paper
 2. FOR THE BASE :Combine dry ingredients in a bowl. Add the egg and the melted butter .Mix well then press two thirds of the mixture into the prepared lined tin.
 3. FOR THE FILLING: Slowly melt the butter, condensed milk and golden syrup together Mix well then cool Add Vanilla essence. Pour on to the base. Sprinkle the remaining crumbly base mixture over the filling and bake for 30 minutes Cool and refrigerate. Cut the next day to get beautiful slices.
- Can be drizzled with melted white chocolate to decorate

Enjoy
Sharon Laurent



THE BEAUTY HOUSE

Personalised, friendly service

Tauwhare Village, 1092b Tauwhare Road

Ph: 8240950 or 0274 853985 Email: thebeautyhouse@xtra.co.nz

BESTOW BEAUTY OIL 500mls \$32.50

I now stock this wonderful food for skin. It's an edible cosmetic, making skin soft, smooth and velvety. Bestow Beauty Oil contains high levels of Essential Fatty Acids (Omeg-3 & Omega-6) that are not only vital for health but also the beauty and vitality of skin. This product is only sold through beauty therapists. Each bottle is accompanied by a beautiful, collectable recipe hand-out and folder.

Compare my price with local stockists – I am very reasonable.

SUNFX SPRAY TANS ONLY \$30 – The days are getting longer and warmer so if you need some lovely natural colour make a booking now! Bring a friend & you both pay only \$25.00 each!

BELLA VI MINERAL COSMETICS – book for a **FREE** no obligation trial with this fabulous natural, beautiful & light cosmetic range. For every package order (starting @ \$84.50) receive a **FREE** eyelash tint during August & September.

OASIS BEAUTY SKINCARE – naturally inspired professional sun & skin care solutions. Skin care samples available **FREE** – give your skin a healthy boost!

I also do gift vouchers & stock ESSENTIALS products – great for gifts & at a very reasonable cost.

Jacqueline Jones, Beautician (CIBTAC, RCompN)





EUREKA BADMINTON CLUB



JUNIOR CLUB NEWS

23.08.2010

We continue to have great attendance at our club nights on Wednesdays, usually over 20 keen badminton players. In July we had a Yankee tournament, won by Matthew Vink and Paige Hallam, Congratulations. In the Yankee tournament the aim is to get as many points as possible so the person with the highest combined score is the winner.

Berkley Normal Middle School participated in an inter intermediate competition. In the competition Berkley came 1st, 2nd, 3rd and 4th. Eureka was represented with Josh Beattie and Matthew Graham in the team which came 2nd and Brandon Vink in the team which came 4th. Well done boys!

Congratulations to Amanda Brown an ex Eureka Junior who has won the NZ women's singles championship, we are very proud of you.

Thanks to Bryce Silverster who is running the badminton and doing a great job of setting up and running the games. It is a busy evening with so many children and Bryce is doing a fabulous job.

The end of the term will bring our badminton season to an end. We will be running another Yankee tournament and the club champs so there is plenty of fun still to be had.

Thanks to all the children for their good behaviour and great sportsmanship.

Contact Trisha Benge 829 5531



Pukeko Preschool, Tauwhare

"Quality early childhood education for 2-5 year olds in a caring rural environment"

Our local Pukeko Preschoolers are extending their creative talents at present in the sewing realm. Many have hand sewn puppets and this week our older 4 year olds are taking turns at the sewing machine to stitch together their own tails for dragon costumes. The Paul Jennings series of books of Rascal and his dragon friends are very popular with the children. Two of these stories will be acted out by the older children in their self made costumes over the next couple of weeks. The props being made for the set are keeping more busy minds and fingers busy on the other side of the room! As we lose a good number of children to school over the next couple of months we look forward to welcoming new faces and families into our preschool.

The Pukeko Preschool community wishes to thank the greater local Tauwhare and Eureka communities for supporting the Tauwhare Winter Fair in early August. This was a wonderful fun Friday night with a great variety of stall holders, many spot prizes and a great place to socialise. We exceeded our fundraising target for the event and wish to especially thank and acknowledge our sponsors of the night:

DJ & RJ Transport, Porse Cambridge, Matt Long Graphic Design, The Warehouse - Cambridge and Morrinsville, Boston Cafe Hillcrest, Olde Creamery Cafe, Waikato Valley Chocolates, Whittakers Chocolates, Cadburys, Amcal Cambridge, Sportcraft Boats, and our local Rural Delivery Posties of Hamilton, Cambridge and Morrinsville, New World Hillcrest and Cambridge, \$2 Plus Store Rototuna, Life Pharmacy Outlet Store The Base, Simplifood Cambridge, Bunnings Warehouse Te Rapa & Cambridge, Paper Plus Morrinsville, Showcase Creative Gifts Cambridge, Hair Gallery Hillcrest, Empire Rose Cambridge, Countdown Cambridge, RD1 Cambridge, Cambridge Pet Shop, Comins Pharmacy Cambridge, Health 2000 Cambridge, Export Meat Warehouse Cambridge. The Beauty House Tauwhare, Ferano Hair Therapy.

TAUWHARE INDOOR BOWLING CLUB

July – August has been another busy month for club members. Congratulations to L Grieveson who was runner up in the Eastern Waikato Champion of Champion Singles and more congratulations to L Grieveson and G Goodare who were runners up in the Eastern Waikato Champion of Champion Pairs.

Congratulations to K Williams who was in the Eastern Waikato Leads and Twos Triples winning team. Team members were H Nielsen (Puketaha), K Williams (Tauwhare), Ange Jones (Matangi). The competition was run on a 'single entry' basis.

R Arnold represented Tauwhare in the Matangi-Tauwhare Greenfield Shield (8 ladies) team. The match vs Hamilton Workingman's Club resulted in a win for the Hamilton team.

J Arnold, I Billings and J Bargh played in the 8-man Matangi-Tauwhare team for the Bankier Shield Challenge against St Andrews (Hamilton). St Andrews retained the Shield.

The Devon Art Team defeated Beerescourt and are preparing to play Tatanui later this month.

Congratulations to I Billings who was selected to play in the Waikato Senior Squad in the Quadrangular Tournament at Pukekohe against Counties, Manukau and Northland.

At the Puketaha Open Tournament J Hooper, J Bargh, I Spencer and H Bargh were Runners up.

Once again thank you to all Club members for their contributions of supper, raffles and setting up of the Hall for our Triples Open Tournament on 22 July 2010. M Plane's team (Gordonton) were the winners. D Stobie's team (Gordonton) were Runners Up.

Results:

Club Night 29 July 2010

- Winners J Bargh, R Bargh
- Runners Up J Hooper, N Woodcock, N Stolwyk

Club Night 5 August 2010

- Winners J Arnold, E Morris, M Bargh
- Runners Up I Pizzini, H Bargh, D Hughes

Drawn Pairs 12 August 2010

- Winners L Verner, M Bargh
- Runners Up E Morris, N Stolwyk

Married Couples 13 August 2010

- Winners W and E Silvester
- Runners Up J & S Cottle

Up & Coming Events:

- 2 September Sattrup Trophy
- 9 September Club Night
- 16 September Club Night (Final Points Night)
- 23 September Patrons Night
- 30 September AGM and Prizegiving
- 7 October Christmas Tournament. Rinks. **A plate please. \$5.00 entry**

Until next month - Good Bowling everyone - Robin Bargh 8241 819.

PS: Could you please return any cups you have so we can have them engraved and ready to give out at Prizegiving.



BIO-YOGHURT



Also known as live or probiotic yoghurt, bio-yoghurt is an immune system saviour



At this time of the year anti biotics are used a lot and along with stress and a poor diet these can allow "unfriendly" bacteria to take over.

TO GET A HEALTHY BALANCE BACK OF HEALTHY GOOD BACTERIA YOU CAN TAKE:

1. Probiotic yoghurt (plain is best).
2. Small drink shots of good bacteria (these are small containers in the yoghurt section at the supermarket (YAKULT)).
3. In a capsule from your health food store.



All of the above should be stored in the fridge.

*These all contain: Lactobacillus acidophilus;
Lactobacillus rhamnosus; and bifida.*

The above are "friendly bacteria", which a healthy gut should be teeming with. Eating one pot of live yoghurt a day can help redress the balance. This also helps the body fight infections as well as allowing the gut to absorb other essential immunity boosting nutrients efficiently.

Probiotic yoghurt also stimulates the production of anti-viral agents which enhance immune response and helps prevent cancer.

Nutrients: Vitamins B2, B12, calcium, magnesium, phosphorous, potassium, bacteria cultures.



CHERYL McFARLANE

Crossing the barrier

Humans are usually not susceptible to infectious diseases occurring in animals. However, there are some important exceptions. Organisms carried by normal appearing animals may on some occasions cross the barrier between animals and humans. Such infections shared by animals and man, are called zoonoses. While the animals have natural resistance to these microorganisms, humans with no previous exposure to the agent lack protective immunity. A person's age and health status may affect their immune system, and thereby increase his or her chances of getting disease from animals. One should think of young and old people, pregnant women and immune deficient people.

There are about 150 zoonoses known and there are many different organisms that can cause zoonoses.

***Bacteria:** Leptospirosis, Salmonella, Listeria, E. coli are just a few examples

***Protozoa:** Toxoplasma

*** Fungi:** Ringworm

*** Viruses:** Newcastle Disease, Swineflu and Parapox virus (also known as Ecthyma, Orf or Scabby Mouth [see photo's]).

*** Parasites:** Tapeworm and Toxocara



Transmission usually occurs through exposure and contact with infected material (eg birthfluids, membranes, faeces, urine, etc), inhaling aerosols, eating contaminated or raw foods or direct contact with the infected animal. Therefore, exposure risks can be minimised by wearing protective gear such as a waterproof apron or a partition gown, when helping giving animals birth and handling afterbirths, wearing rubber gloves for oral or rectal examinations. Wash your hands before eating, drinking and smoking after contacting animals, or working in areas with animal dung. Complete washing of fresh vegetables and fruits and thorough cooking of all food. Wash cuts and grazes immediately with soap and running water and cover new and existing wounds with a waterproof dressing before beginning to work with animals. In some diseases infection risk can be reduced by vaccinating the animals and could be worthwhile considering. Regular deworming can also reduce the infection risk. Contact your vet and ask about the possibilities.

In the event that you do become ill with a fever or show other signs of infection let your physician know of the nature of your work with animals. This history of exposure is often critical in the recognition of disease conditions.

**JBVISSER
VETS**
For your Livestock & Pets

0800 VISSERVETS (847 737)

47 Lorne Street Morrinsville
161 Morrinsville Road Newstead

T 07 889 0414

F 07 889 0415

W www.jbvisservets.co.nz

E jbvisservets@paradise.net.nz

Consulting Officer Comment

It's official. Spring is here. Calving is almost over, the milk cheques are starting to flow and Henry didn't reduce the milk price forecast as expected. What could be better? Probably nothing but there is one possibility that could eclipse them all. Dan Hinton's 'shout' when the Eureka DG, along with some of his old discussion group clients, converge on the Hinton's farm on Eureka Rd, Tuesday September 14th at 11am for a look at how "the theory works in practice". This promises to be a great day.

Olin Greenan will be hosting a MilkSmart workshop on November 3rd. Please take the time to read the rest of this article dedicated to this new initiative to NZ but well proven in Australia. It's a topic that is relevant to every single dairy farmer and is free to levy paying dairy farmers.

Milk Smart

MilkSmart will be launched in October with a website, products and series of workshops. The aim of MilkSmart is to improve milk harvesting efficiency

MilkSmart is concerned not only with milking, but with the whole milk harvesting process from collecting the cows from the paddock, milking, clean-up and the return of the cows.

MilkSmart looks at all the specific aspects of that process. The program allows a farmer to complete a comprehensive self assessment of their milk harvesting operation and then compare their performance against other farmers. Having made the comparisons and identified areas in which greater efficiencies may be achieved MilkSmart, provides a comprehensive set of guidelines containing suggestions for improvement.

The primary goals of the project are to enable farmers to:

- 1) **Increase labour productivity** in the milk harvesting area and in doing so farmers can reallocate saved time to other parts of the business.
- 2) **reduce stress on cows** through the implementation of improved stock handling skills and better designed infrastructure. By reducing stress levels it is expected that cows will milk faster and often produce more milk. A reduction in stress will also have a positive effect on cow health and related welfare issues.
- 3) **Improve the working environment** for people milking. To be achieved through better shed design and a raising of awareness around good milking techniques. As a result of improvements both the farmer and staff will benefit through a reduction of fatigue and injury leading to improved worker satisfaction and ultimately better retention.
- 4) **promote understanding** and encourage the adoption of technology that will increase labour efficiency. Through the use of technological innovation processes and operations on farm are streamlined, allowing farmers to reallocate time or reduce overall labour inputs.

How has MilkSmart Evolved

The initial concept for MilkSmart came from across the ditch, with a Dairy Australia initiative called cow time. (See www.cowtime.com.au) Cow time has been in

operation for over 10 years and has resulted in the improvement of Australian farmers milk harvesting, making milking time easier, quicker and more productive.

MilkSmart has been adapted for New Zealand conditions and milking systems and has been expanded to include all facets of the milk harvesting process and has encompasses many tips from the highly acclaimed "111 Ideas to Improve Milking" – Jan Fox.

Having made the adaptations, the guideline, has undergone a 2 year peer review process, involving 35 industry stakeholders including farmers, vets and rural consultants as well as companies such as Fonterra, Pfizer and Ag ITO.

How will MilkSmart work ?

From October onwards, the farmer or farm manager will be able to enter the website www.milksmart.co.nz directly or through the DairyNZ website. Once in the site he or she will be prompted to register their farm dairy or dairies.

Once registered, they will be asked to complete a farm assessment of their milking operation. The assessment is comprehensive but is split into categories to enable the user to select which element of the milk harvesting process they wish to examine.

Having completed the assessment category, a report will be generated indicating areas which might need improvement. By following simple prompts the farmer will be directed to the appropriate area of the guide where they can choose from a wide range of resources, designed to address the problem area.

In addition to the guide there will also be a series of products geared toward milk harvesting efficiency and are centred around systems designed to encourage better communication, tools to improve staff training and promote best practice.

For farmers that do not have access to the internet or would prefer to complete the a paper assessment they will be available on request.

Farmer attendance:

We are aiming for an attendance of min 35 farmers and max 50 farmers. The workshops include a large amount of delegate participation and therefore in the initial instance will be restricted to a maximum of two persons per farm. CO will receive weekly updates leading up to the workshops indicating those farmers who have registered to attend.

Topics for the workshop

- Introduction to MilkSmart
- Efficient milking techniques and routine
- Ergonomics, biomechanics and milker comfort
- Better use of systems and processes
- Assessment review



Timings:

Workshop Start with a breakfast from 9.30am and a scheduled 2 pm finish
Tea and coffee on arrival and catered finger food lunch provided (not BBQ)

Promotion

MilkSmart will be featuring in the next issue of Inside Dairy and on the DairyNZ website.



NEWS FROM YOUR WAIKATO DISTRICT COUNCILLOR

Nominations have now closed for **local body elections**. Voting papers will be dispatched from 17 September with voting from that date until midday on October 9th. Voting papers can be taken to Council offices or posted.

Four Councillors were unopposed when nominations closed on Friday last. Myself in Eureka Ward, Noel Smith - Newcastle Ward, Wally Hayes - Tamahere Ward and Jennie Hayman in the new Ward of Onewhero (formerly in Franklin District). There will be 14 Councillors on the new Council.

The three Mayoral candidates for WDC are Clint Baddeley - Raglan, Frank McInally - Huntly and Allan Sanson - Huntly. Clint and Allan are currently Councillors for Waikato District and Frank is the current Chairman of the Huntly Community Board.

Waikato Regional Council (Environment Waikato) candidates for this Ward (Central Waikato) are Neil McLean, Tipa Mahuta, Theresa Stark and Garth Woodward. Neil McLean is a dairy farmer from Gordonton and on Fonterra's Shareholders Council; Theresa Stark is a farmer from rural Huntly and involved with Federated Farmer. I do not have any details of the other two candidates.

More information on the Mayoral Candidates for Waikato District, the candidates for Waikato District Health Board and Waikato Regional Council can be found on their respective websites. The website for Waikato District is <http://www.waikatodc.govt.nz/Your-Council/Elections.aspx>

The **Tauwhare Road / Scotsmans Valley Road intersection** continues to be an accident hot spot. Council and our consultants are undertaking a safety review and once this has been completed we will be in a better position to decide what other works are needed to reduce crashes in the area. I have had some excellent feedback from residents which will be considered during the review.

The **Franklin District amalgamation** is tracking well and putting a huge workload on our existing staff. This month the Tuakau Library was welcomed in to Waikato District. Road design work for the amalgamated area has started and we are on track for the move towards integration on 1 November. Recruitment of the 65 staff required to service the new area is at least 80% completed.

Our Rural Subdivision Review, that I have mentioned previously, is still taking a considerable amount of our time. We still hope to release the Draft Document by 25 September and will then call for submissions.

A great deal of time is also being spent on our **Future Proof** document and is being linked with the direction set in our District Growth Strategy. We are working closely with Environment Waikato around their Regional Policy Statement (RPS) because we need to be sure that the RPS and Future Proof are delivering the outcomes we seek for the benefit of our District.

I am looking forward to working with you for another three years as your representative.

Rob McGuire
Councillor Eureka Ward
Ph. 824 3696/fax 824 3645
Mobile 0274 970 966/email robmcguire@xtra.co.nz



Eureka Precast Concrete

117 Hooper Road

**Manufacturer of the following
Farm and Small Block Concrete Products**

Palm Kernel Feeding Troughs

Feeding Pad Troughs

1,000 Litre Oblong Water Troughs

200 Litre Round Water Troughs

Offal Hole Lids

Septic Tank Replacement Lids

Plus Much More

Ph. Ian Manning – 0274 961902

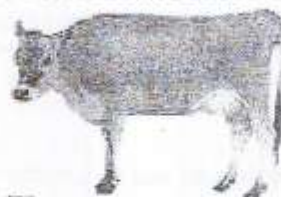
824 1988 a.h.

JBVisserVets

The team of **JBVisserVets** pride themselves on providing you top quality care for all large animals. Be it dairy, beef or lifestyle, your animals are in the best of care. Customer focused to the highest of quality, **JBVisserVets** look forward to meeting you today.

0800 VISSER

47 Lorne St Morrinsville / 161 Morrinsville Road Newstead



INNOVATIVE



EUREKA MOTORS

COLIN DUNCAN (PROP). SH 26, OPPOSITE EUREKA HALL

**WE ARE EQUIPPED AND SKILLED TO CARRY OUT
ANY REPAIRS NEEDED ON ALL TYPES OF VEHICLES**

Our experienced workshop staff guarantee to provide quality service
to all our customers

If we don't have the right part in stock we'll get it for you straight away
If you need some work done, why not give us a try?

OPEN MONDAY - FRIDAY 7.30am - 6.00pm

SATURDAY 8.00am - Noon

Ph 8241 773 Fax 8241 073

WALLING CONTRACTING LTD **'YOUR PROVEN LOCAL ONE STOP CONTRACTORS'**

WE CAN OFFER YOU THE FOLLOWING SERVICES:



- *Grass Silage
- *Ploughing
- *Rotary Hoeing
- *Ripping
- *Undersowing
- *Baling & Wrapping
- *Digger (12 Ton)
- *Grass Crop Sales

- *Maize Silage
- *Power Harrowing
- *Discing
- *Maize Planting
- *Roller Drilling
- *Power Harrow/Seedbox
- *Shavings & Sawdust
- *Maize Crop Sales



**FOR ALL YOUR CONTRACTING NEEDS
PHONE LEN OR BECKY
ON**

824 0894 (anytime)

SPYVES PANEL SHOP
for all
Panel and paint requirements



**AUTOBOT CHASSIS
and
ALIGNMENT MACHINE**

Ph Ron or Karen 8241 890
Fax 8241 892
Mob 027 280 0546

ROSS PUMPS

&

Filtration Specialists Ltd



Servicing and installation
On all types of pumps
Full Water Treatment
Service Available

DAREN ROSS

Tel. 8241 726 or 0274 346 571

Fax. 8241 879

Email: rosspumps@xtra.co.nz

COMPUTERISED BULK SPREADERS LTD

For all your spreading needs



FERTILIZER, LIME, UREA

**Top Service,
Competitive Rates**

Roger Springett
103 Hooper Road Eureka
Ph. 8241 175
Mob. 0274 970 413

EUREKA POULTRY FARM

13 Hooper Road
Ph 824 1762

NIC & MARIA STOLWYK

Hobby Hens



Young pullets from
5 weeks to point-of-lay
Great for lifestylers
Bagged up chook manure
Hours Mon-Sat 8-6

Green Acres

Professional lawn and
Garden care service



Maurice Smith

For free no-obligation quote:

Ph: (07) 824 1948

Mobile: 0274 797 282

Fax: (07) 824 1947

Email: mfsmith@clear.net.nz

Ride-on mowing specialists

Give your lawn the perfect finish

IAN MANNING
REGISTERED DRAINLAYER



For all drainlaying work
New or alterations
Residential & Commercial
Blocked drains cleared
Maintenance
Prompt service

Tel. 8241 988
Fax. 8241 989
Mob. 0274 961 902

Kelvin Lalich Builders Ltd

- New homes
- Alterations
- Large & Small
Commercial Buildings
- Chicken Sheds

Phone 889 3951 (bus)
889 3975 (a/hrs)



**"Building
with Pride"**

FRESH
APPLES & PEARS
STONEFRUIT IN SEASON



NEWSTEAD ORCHARD
552 Morrinsville Road

OPEN MON-SAT.
W J McMiken & Co
Morrinsville Road
Tel. 856 4478

TAUWHARE HOME KILLS LTD



Tauwhare Village
Owner Operators
Trevor & Leonie Brunton

On Farm Killing Service
All beef hung for 7 days
FREE OFFAL DISPOSAL

Ph 824 0880 all hours
Fax 824 0809
Mob 0274 757 215



Gaile Orr

Spiritual Counsellor & Teacher
Working with angels to relay
Messages from loved ones

Personal Readings
Healing
Spiritual Counselling
Meditation & Relaxation Classes

For a personal reading
phone: 07 824 1713

ACE OF SPADES

Landscaping



Your outdoor living specialist

All aspects of landscaping
And garden services

FREE QUOTES

Call Cameron Barr
m. 021 303 053
Ah. 824 1059

CALF COVERS

"Canvas, Jute, or satin
lined for Calf Club"

I also manufacture horse covers, trailer covers or any other kind of cover you may want. Good quality, P.V.C. horse gear bags — can also be used for dive bags. Good quality at reasonable prices.

Phone Narelle Pollock
824 0736



Also

- ✓ Upholstery Cleaning and Protection
- ✓ Flood Restoration
- ✓ Stain Treatment
- ✓ Auto and Marine Work
- ✓ Window Cleaning
- ✓ Senior Citizens Rates

Phone Grant on 0275 542 116
Or 07 823 7031
Locally Owned and Operated

Local builder
Tauwhare Road resident
Registered Tradesman



Concrete work
New homes
Renovations
Alterations
Farm buildings
Decks
Fences
Bathrooms
Kitchens
Roofing

Over 29 years building experience
No job too big or too small

Craig Griffin Builders Limited

Phone Mobile: 027 279 2682
Phone/Fax After Hours: 824 1607
Email: craigandjackiegriffin@ihug.co.nz

nzgardensheds
The best little sheds around!

Your local garden shed supplier of
NZ made, self assemble Garden Sheds
(Zincalume or Colour Steel)

GET IN TOUCH...

- * EASY ASSEMBLY
- * MADE TO LAST!

Waikato Shed Company

218 Hunter Road, Eureka,
Hamilton

Phone: 07 824 1045

Email: sales@nzgardensheds.co.nz

EQUIRE FOR A BROCHURE NOW

**Trusler
Contract
Lawn Mowing**
Fast, efficient, reliable



Free, no-obligation quote and
advice

Lex Trusler

Ph: 824 1906 Mob: 027 221 0861

Fax: 824 1907

Lifestyle blocks—sections
Road verges—horse studs
20 yrs + experience

Scanlan & Jones

Specialists in:

- ✓ Wood Fire Sales
- ✓ Wood Fire Installation/Repairs
- ✓ Hearth Manufacturers
- ✓ Outdoor Fire Installations
- ✓ Chimney Sweeping
- ✓ Heat Transfer Kits — Sales & Installation

Registered Installers
Over 17 Years Experience
Free Quotes



Contact Justin & Brendon
0274 834 267 (day)

A/Hrs: 07 824 0950 Fax 07 824 0951
Email: scanlan.jones@xtra.co.nz

Member of New Zealand
Heating Association



HAIRFIELDS

HAIR DESIGN

95 HOOPER ROAD

Sharon Laurent

Full salon facility in Eureka
Total hair care professional
with many years experience
Agent for Nutrimetics also



Open Tuesday to Friday
Late nights Tues/Thurs
Tel. 824 1712 or 027 280 5978



870 SH 26 Newstead
Brent 0272 432 011
mcfarlanes@farmside.co.nz

Ph 824 1186
Brent 0272 432 011

- Hay / Haylage—round, square, conventional
- Grass & Maize Silage
- Full ground cultivation
- Maize and Crop Planting
- Land lease & Share Cropping
- Spraying
- Truck & Trailer Hire
- Digger
- Metal injected sub-soil irrigation



"Helping farmers feed their cows"



Ctas NZ Ltd
www.ctas.co.nz



Specialists in:

- Professional systems online and PC development
- Online internet based and PC/Lan Systems development
- Business Websites — **FREE** development (conditions apply)
Check out <http://ctas.co.nz/Web/Home.aspx> to see more.
- Alert-Me - Online TXT and Email reminder system. Ideal for everything, from birthdays, appointments, sporting, gardening, TAX, WOF, Registration and many more. One off or recurring. Free for home use. Go to www.Alert-Me.co.nz
- YouTXT - Operate your own TXT shortcode using our TXT system for free.
Go to www.youtxt.co.nz
- FlightCheck - Check your Flight details, real time from your Mobile Phone.
TXT Flight number to 8808. Txt's cost 50c

Phone: 07 824 1025
Email: grant@ctas.co.nz



Newstead Veterinary Services
161 Morrinsville Rd (SH26)
Phone (07) 856-4522 Fax (07) 8569487
email: admin@newsteadvets.co.nz
www.newsteadvets.co.nz

We offer a comprehensive range of services for dogs, cats and small pets.

- Puppy pre-school classes
- Comprehensive range of pet care products and pet food
- Nutritional advice with onsite pet dietician and free weight clinic
- Cremation with a local pet crematorium, with optional return of ashes
- Isolation ward
- NZVA Microchipping Accredited Practice
- MAF Accredited vets for pet export certificates to Australia
- Ample parking

We believe that pets are important members of your family.

Now Is A Great Time To Add Value To Your Property With A New Shed

Waikato Shed Company offers a true custom design & build service that ensures you get the very best shed for your needs that is outstanding value for money. We listen to what you want because we understand that one size does not fit all. In fact in over 4 years we have never built the same shed twice.



FULL DESIGN & BUILD OR KITSET ONLY OPTIONS

- American Barns
- Aircraft hangars
- Workshops & storage
- Stables & arenas
- Industrial buildings
- No set size restrictions
- All steel construction
- Clear span (no web trusses) up to 35m
- Up to 7m eave height
- Any length
- Integrated mezzanine floor
- Full range of cladding colours & choices



FREE, NO OBLIGATION DESIGN & QUOTE SERVICE



Freephone **0800 555 147**
218 Hunter Road, Eureka
www.waikatosheds.co.nz

**WAIKATO SHED
COMPANY**
great sheds, done right!
Hamilton • Taupo

BUILT TO LAST THE DISTANCE

"Our multi-purpose shed was a challenging build and Waikato Sheds did a first class job of it. Their attention to detail and quality of workmanship was really good. Nothing was too much trouble."

Rob Waddell, Olympic Gold Medalist,
Americas Cup Sailor



When Rob Waddell needed a new building for his farm, he chose Waikato Shed Company. Rob had specific requirements that had to be met, and it was clear a "standard shed" wasn't going to give him the flexibility, features or look he was after.

With the new shed located close to his home, it was important that it be aesthetically pleasing. The monopitch roof was custom made to precisely match the roof pitch of Rob's house, and horizontal cladding was used to create a consistent appearance with the house.

Careful planning and innovative design ensured the building wasn't just another steel shed, but a valuable addition to the property.

FARM • INDUSTRIAL • LIFESTYLE

WAIKATO SHED
COMPANY ✓✓

great sheds, done right!

Hamilton • Taupo

www.waikatosheds.co.nz

